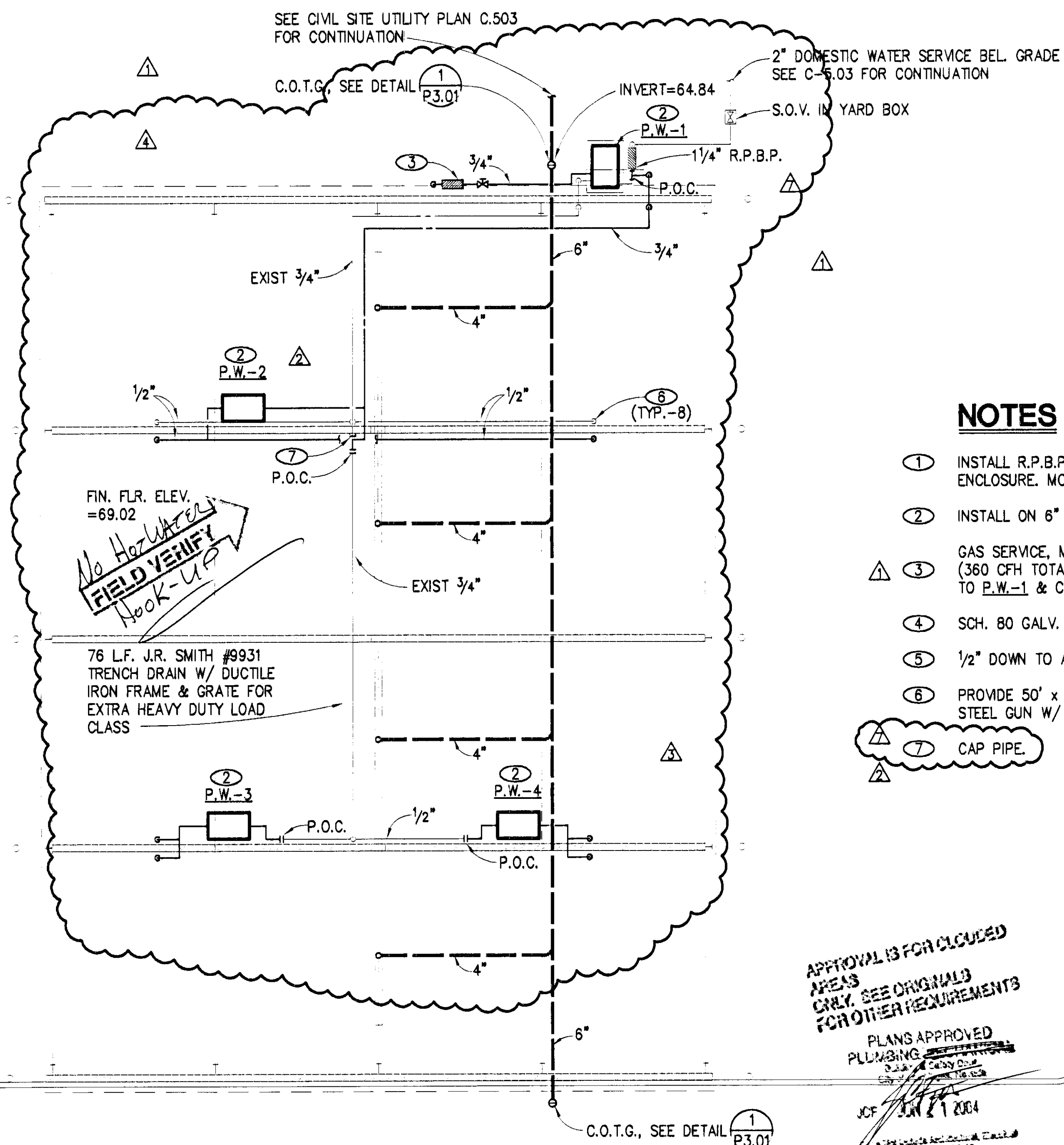


PLUMBING EQUIPMENT SCHEDULE

ITEM	DESCRIPTION
PW-2	HYDROTEK CW 21004-E3/E4, 4 GPM @ 2100 PSI OUTLET
PW-3	PRESSURE W/ 6.0 HP, 208V/3Ø MOTOR, SKID MOUNTED, BELT DRIVE, W/ ENCLOSURE, FURN. W/ REMOTE CONTROL PANEL W/ STARTER, DISCONNECT
PW-4	SMITH REMOTE START/STOP SWITCH, START/TIME OUT SAFETY SWITCHES, WALL BRACKET.

*PUMPS ONLY
FIELD VERIFY
NO HEATING*



NOTES

- ① INSTALL R.P.B.P. IN "HOT BOX" OR EQUAL INSULATED ENCLOSURE. MOUNT ASSEMBLY ON 6" CONCRETE PAD.
- ② INSTALL ON 6" CONCRETE PAD.
- ⚠ ③ GAS SERVICE, METER & REGULATOR BY S.W. GAS. (360 CFH TOTAL CONN. LOAD), EXTEND 3/4" GAS TO P.W.-1 & CONNECT.
- ④ SCH. 80 GALV. STEEL PIPING W/ THREADED FITTINGS.
- ⑤ 1/2" DOWN TO APOLLO 70-100 BALL VALVE @ +48" A.F.F. ⑥
- ⑥ PROVIDE 50' x 3/8" HOSE, SWVEL, 36" WAND, STAINLESS STEEL GUN W/ SWVEL & HOSE RACK.
- ⚠ ⑦ CAP PIPE.

APPROVAL IS FOR CIRCLED AREAS ONLY. SEE ORIGINALS FOR OTHER REQUIREMENTS

PLUMBING APPROVED

JCF JUN 21 2004

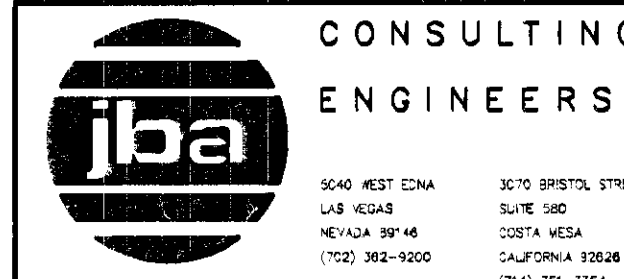
WASH BAYS FLOOR PLAN

1/8" = 1'-0"

A

PLAN NORTH

TRUE NORTH



CONSULTING ENGINEERS

3070 BRISTOL STREET
LAS VEGAS, NEVADA 89102
(702) 382-1000



REVISION #1	AUGUST 30, 2002
REVISION #2	OCTOBER 16, 2002
REVISION #3	JANUARY 22, 2003
REVISION #4	MARCH 4, 2004
REVISION #7	MAY 05, 2004

CITY OF LAS VEGAS
DEPARTMENT OF PUBLIC WORKS
ARCHITECTURAL SERVICES

OWNER: CITY OF LAS VEGAS
DEPARTMENT OF PUBLIC WORKS
ARCHITECTURAL SERVICES

400 EAST STEWART AVENUE
LAS VEGAS, NEVADA 89101
PHONE: (702) 229-6535
FAX: (702) 382-3232
TDD: (702) 386-9108

DESIGNED BY: [Signature]

CHECKED BY: [Signature]

APPROVED BY: [Signature]

DATE: JUN 11 2004

DRAWN	DD
FILE	6431P14.DWG
DATE	06.28.02
SCALE	1/8" = 1'-0"
BID NO	02.15341.02
CLDWGNO	107-V3548
SHTNO	P1.14

711743

#64.31