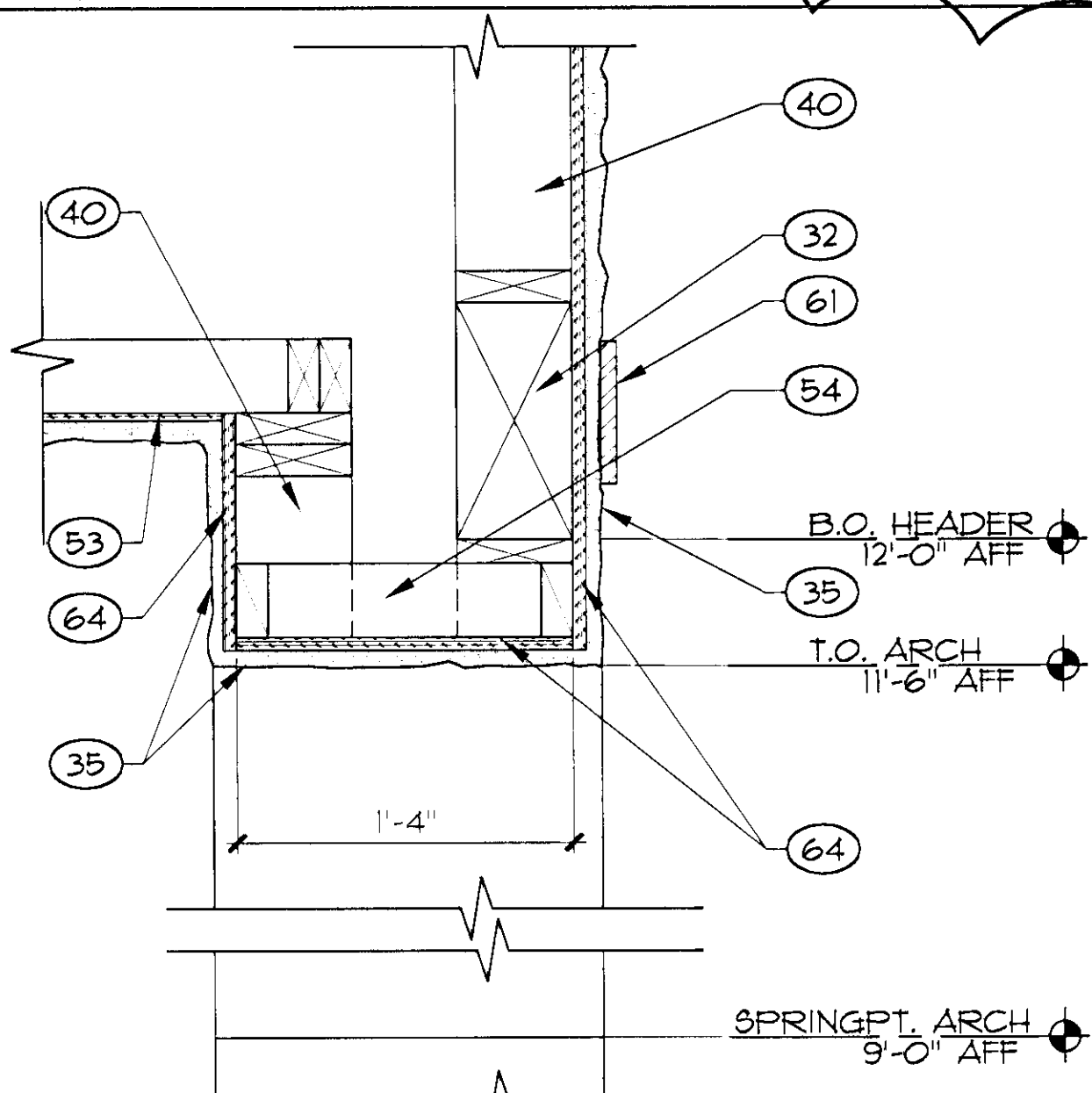
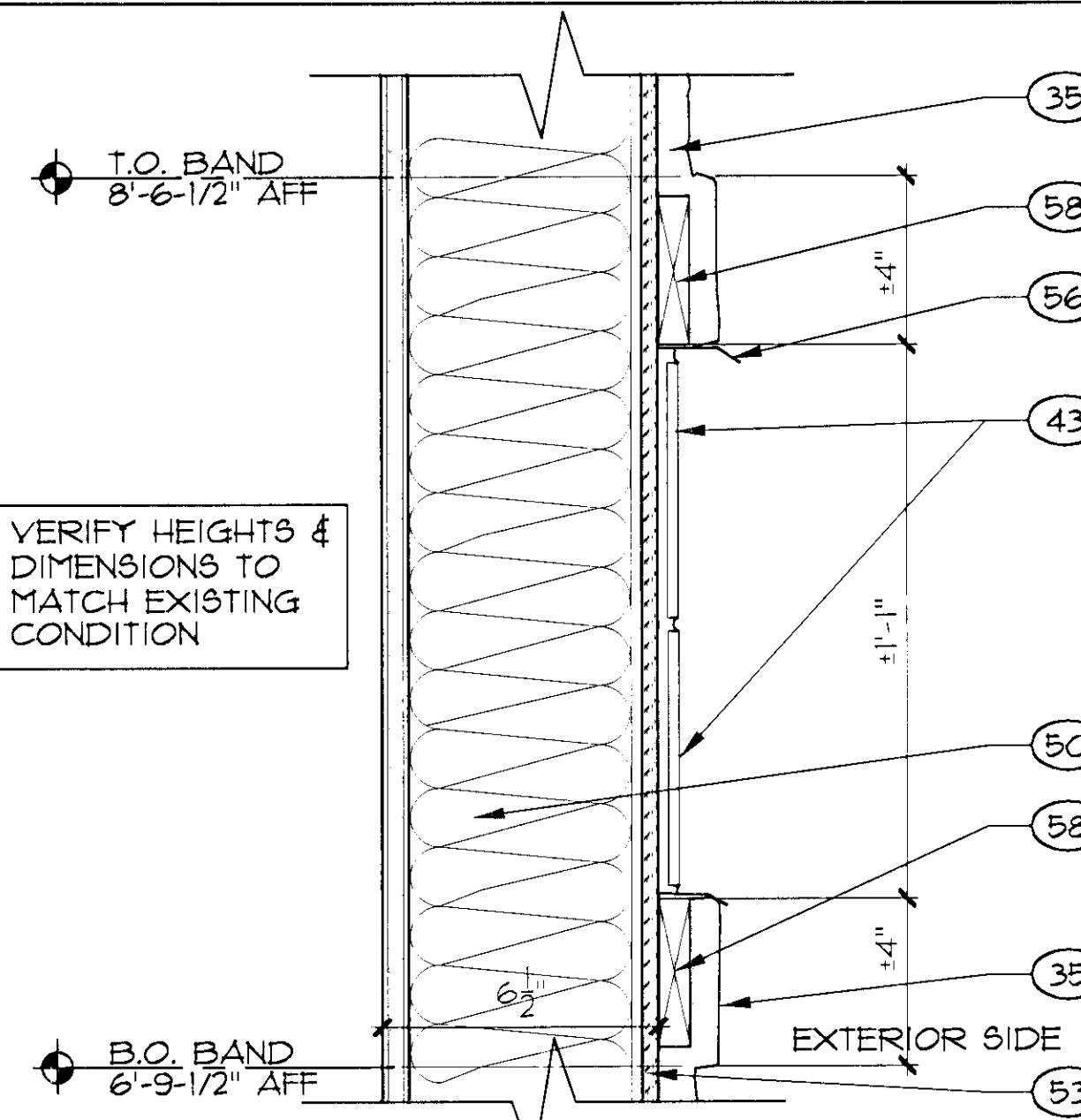


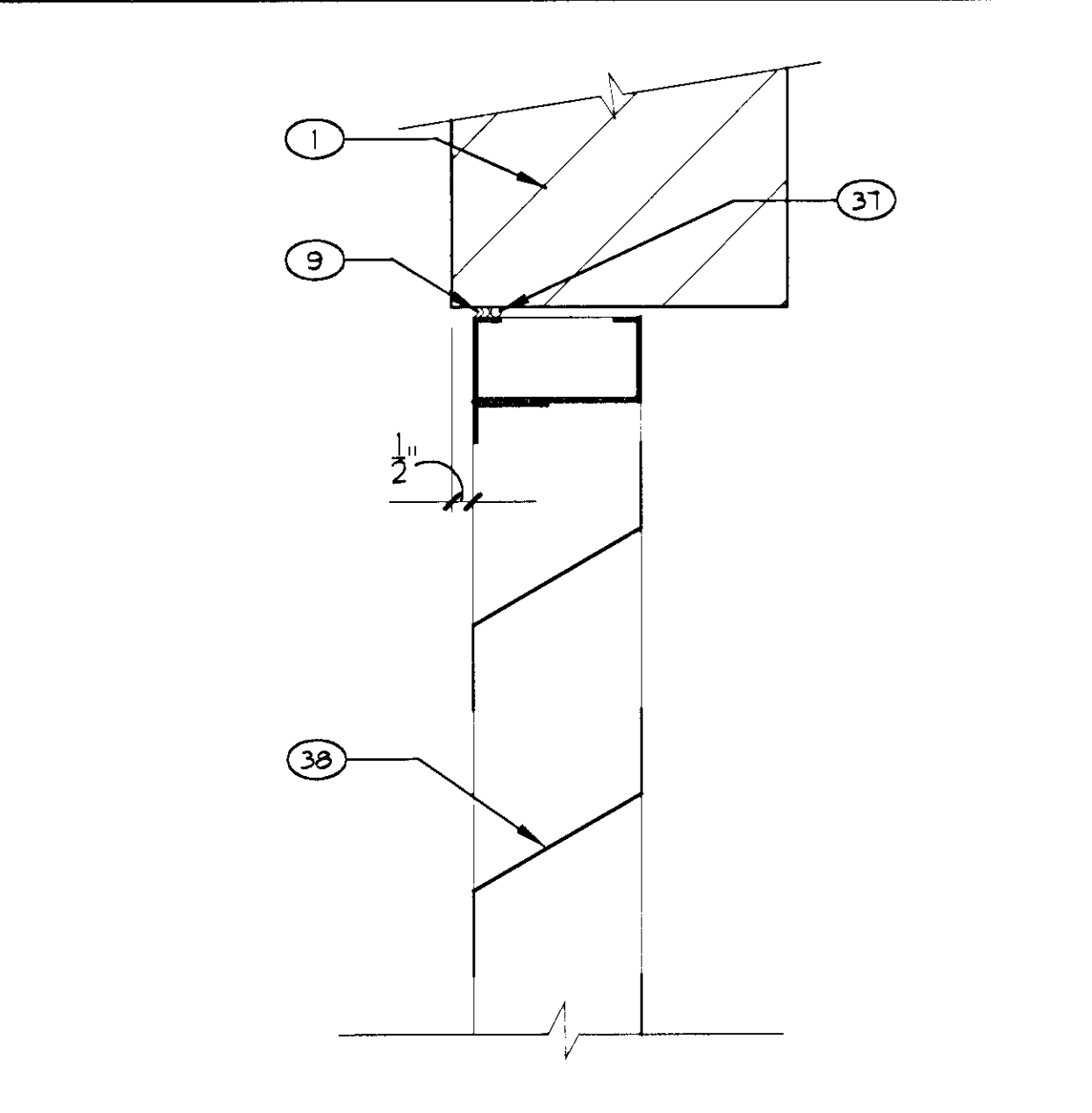
FINISH @ EXIST. COLUMN
SCALE: 3" = 1'-0"



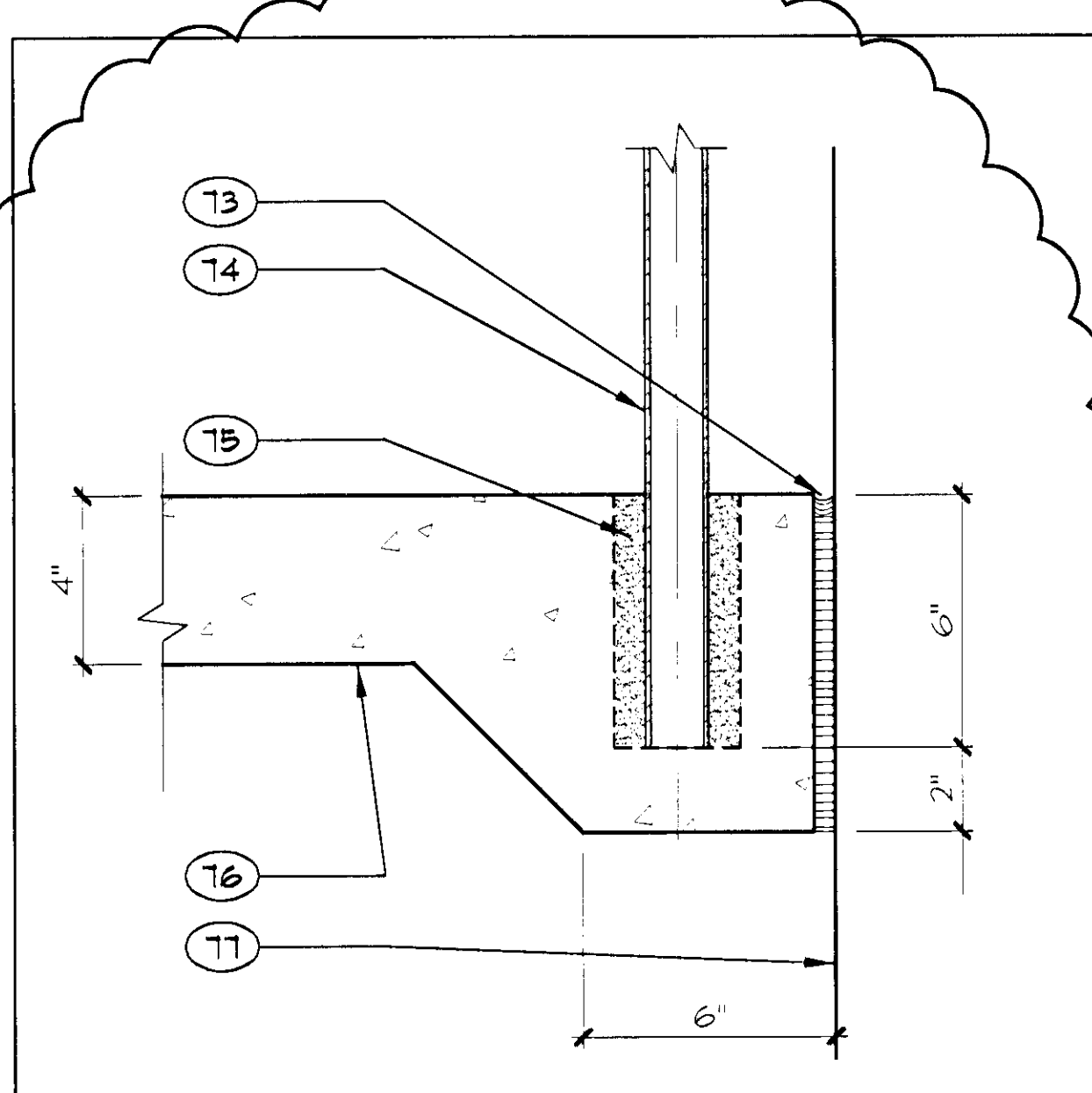
PORTICO ARCH HEADER
SCALE: 1-1/2" = 1'-0"



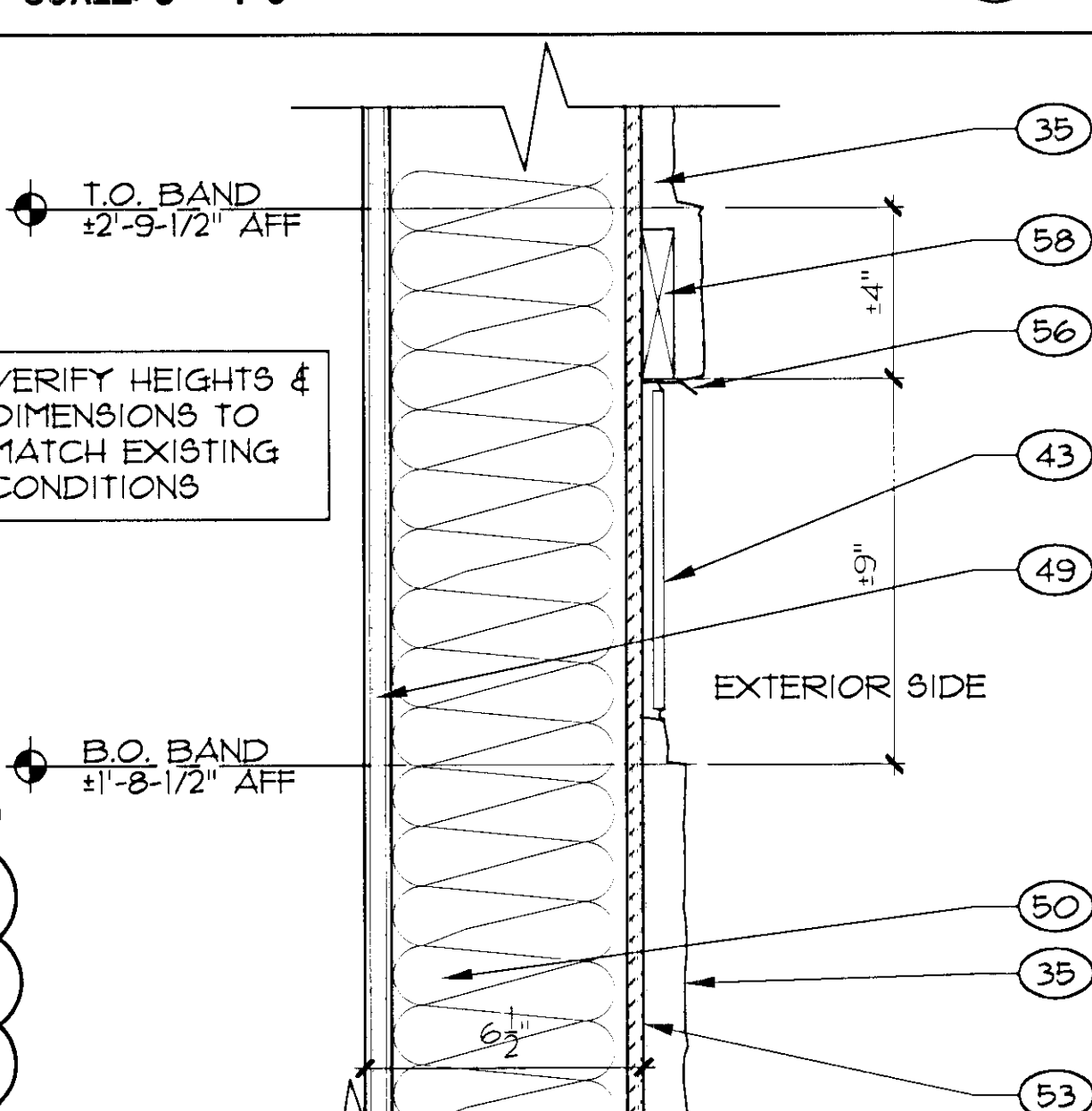
UPPER TILE BAND
SCALE: 3" = 1'-0"



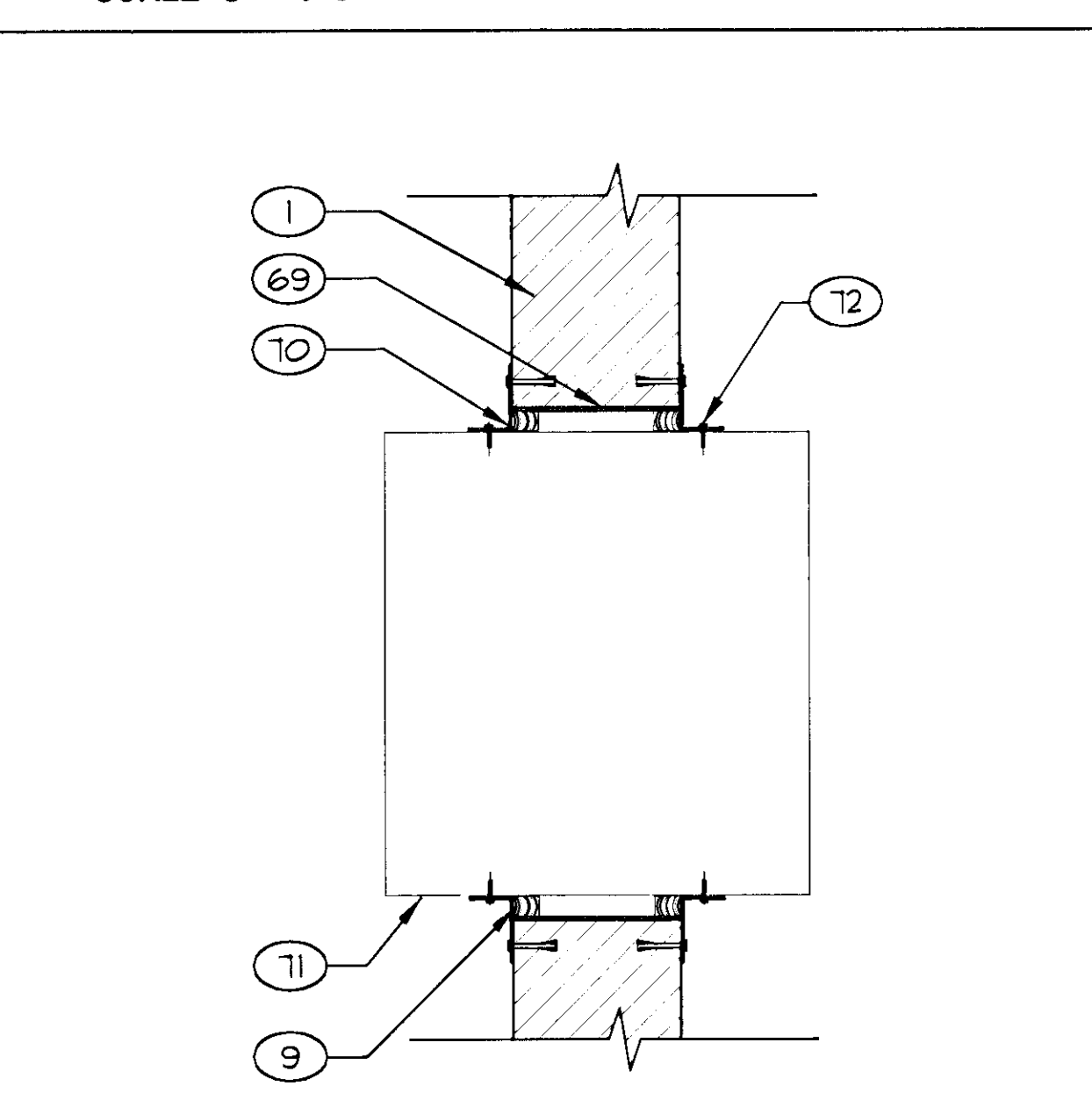
LOUVER @ CMU
SCALE: 3" = 1'-0"



HANDRAIL BASE
SCALE: 3" = 1'-0" 028_013



LOWER TILE BAND
SCALE: 3" = 1'-0"



DUCT PENETRATION DETAIL
SCALE: 1-1/2" = 1'-0"

- KEYNOTES**
SHEETS A130 - A132
- 1 CMU WALL
 - 2 CMU BOND BEAM, SEE STRUCT. DWGS.
 - 3 STEEL BASE PLATE
 - 4 STEEL COLUMN, SEE STRUCT. DWGS.
 - 5 8" DIA. PIPE BOLLARD, SEE STRUCT. DWGS.
 - 6 8" WIDE CHANNEL GIRT ANCHOR BOLT
 - 7 PREMANUFACTURED METAL WALL PANEL SEALANT
 - 8 TRENCH DRAIN
 - 9 CONCRETE FLOOR SLAB, SEE STRUCTURAL DRAWINGS
 - 10 TRENCH DRAIN GRATE SECTIONS FOR FULL LENGTH OF TRENCH, FLUSH WITH FLOOR SLAB
 - 11 COMPRESSED SOIL
 - 12 DRAIN COVER @ 12'-6" OC, SEE MECH. DWGS.
 - 13 FINISH GRADE
 - 14 ROOF DRAIN PIPE - SEE MECH. DWGS.
 - 15 CONCRETE FOOTING, SEE STRUCTURAL DRAWINGS
 - 16 GIRT, SEE STRUCTURAL
 - 17 FURLIN, SEE STRUCTURAL
 - 18 METAL ROOF
 - 19 GUTTER
 - 20 DOWNSPOUT, PAINTED - SEE A201 FOR COLOR
 - 21 METAL FASCIA PANEL
 - 22 STEEL STRUCTURE, BY MANUFACTURER
 - 23 CONCRETE PIER
 - 24 METAL SOFFIT PANEL
 - 25 T6 6 x 2, PAINT COLOR B
 - 26 T8 10 x 6, PAINT COLOR B
 - 27 T8 8 x 8, PAINT COLOR B
 - 28 T6 6 x 6, PAINT COLOR B
 - 29 WELD FULLY
 - 30 HEADER, SEE STRUCT. DWGS
 - 31 2 x 6 METAL STUDS
 - 32 SIDEWALK, SEE CIVIL DWGS.
 - 33 EXTERIOR CEMENT PLASTER O/ METAL LATH O/ FELT PAPER
 - 34 PLASTIC LAMINATE OVER 3/4" PLYWOOD GREENBD. SUPPORT
 - 35 BACKER ROD
 - 36 LOUVER, PAINT COLOR D
 - 37 2x WOOD BLOCKING
 - 38 2 x 6 WOOD FRAMING
 - 39 EXISTING 6x6 WOOD COLUMN
 - 40 1" @ 18" @ EACH BRACKET TO HANDRAIL
 - 41 CERAMIC TILE
 - 42 SEALANT O/ BACKER ROD
 - 43 3-1/2" x 2-1/2" x 3/8" STAINLESS STEEL ANGLE WITH 1/2" x 3" ANCHORS @ 12" O.C.
 - 44 STANDING BEAM JOINT COVER
 - 45 RIDGE COVER
 - 46 PANEL CLIP
 - 47 3/8" GYPSUM BOARD
 - 48 2 x 6 STUDS @ 16" OC
 - 49 6" x 4" x 3/4" x CONT. L.L.V. W/ X" x X" BOLTS @ 12" O.C.
 - 50 1-1/2" DIA. PIPE HANDRAIL, PAINTED, SEE A201
 - 51 3/8" PLYWOOD SHEATHING
 - 52 2 x 4 WOOD FRAMING
 - 53 2 x 10 FRIEZE BOARD
 - 54 PLASTER SCREED
 - 55 R-19 BATT INSULATION
 - 56 1x WOOD BLOCKING
 - 57 PAINT, SEE A201 FOR COLOR
 - 58 GI FLASHING
 - 59 BUILDING SIGNAGE WHERE OCCURS, SEE ELEVATIONS
 - 60 T8 4x4
 - 61 1/2" DIA. x 5-1/2" THREADED ROD
 - 62 PLYWOOD SHEATHING, CUT TO FOLLOW ARCH RADIUS, SEE ELEVATION.
 - 63 STAMPED STEEL GALV. WALL BRACKET @ 6'-0" O.C. MAX. @ 12" FROM ENDS.
 - 64 3/8" DIA. EXPANSION BOLT INTO CMU.
 - 65 FASTEN SECURELY TO WALL STUDS OR BLOCKING
 - 66 1x WOOD BLOCKING
 - 67
 - 68

- KEYNOTES**
SHEETS A130 - A132
- 69 STEEL SLEEVE
 - 70 ANGLE IRON SUPPORT FRAME FASTENERS FOR DUCTS, 6" O.C. MAX.
 - 71 HYAC DUCT, SEE MECH.
 - 72 SHEET METAL SCREWS
 - 73 SEALANT OVER 1/2" EXP. BD
 - 74 1-1/4" STD. PIPE HANDRAIL SET IN EPOXY GROUT
 - 75 3" @ SLEEVE
 - 76 CONCRETE SLAB FACE OF WALL (WHERE OCCURS)
 - 77



REVISIONS
1 08.30.02
5 03.14.03

CONSULTANT
TATE SNYDER KIMSEY ARCHITECTS
2000 South Valley Center Boulevard, Suite 100, Las Vegas, NV 89102
702.735.1000
www.tate-snyder-kimsey.com

DEPARTMENT OF PUBLIC WORKS
CITY OF LAS VEGAS WEST SERVICE YARD
BUFFALO DRIVE AND PEAK ROAD
LAS VEGAS, NEVADA
BUILDING DETAILS

5 3 4 2 3 2

RECEIVED
MAR 18 2003
CITY OF LAS VEGAS PERMITS

PLANS APPROVED
ARCHITECTURAL
Building & Safety Dept.
City of Las Vegas, Nevada

MJL: MAR 20 2003

Does Not Include Structural, Electrical, Mechanical, or Plumbing. All Work to be Done in Accordance with Approved Plans. No Change Without Approval. Permit is Not a Permit to Violate Any Ordinance.

APPROVAL IS FOR CLOUDED AREAS OR LATEST REVISIONS ONLY. SEE ORIGINALS FOR OTHER REQUIREMENTS.



OWNER: CITY OF LAS VEGAS
DEPARTMENT OF PUBLIC WORKS
ARCHITECTURAL SERVICES

400 EAST STEWART AVENUE
LAS VEGAS, NEVADA 89201
PHONE: (702) 229-6535
FAX: (702) 382-3232
TDD: (702) 386-9108

DRAWN: LFE
FILE: 047A731
DATE: 03.14.03
SCALE: VARIES
JOB NO: 02.1534109
DRAWING NO: 107-V3548