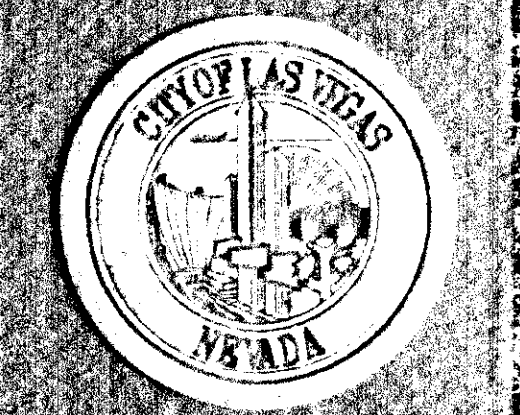


KEYNOTES
SHEETS A7.11 - A7.13, A123

- 1 CMU WALL
- 2 STANDING SEAM METAL ROOF
- 3 STANDING SEAM FASCIA PANEL
- 4 GUTTER
- 5 DUCT, SEE MECH. DUGS.
- 6 STEEL JOIST, SEE STRUCT. DUGS.
- 7 OVERHEAD DOOR
- 8 CONCRETE FLOOR SLAB, SEE STRUCT. DUGS.
- 9 METAL DECK, SEE STRUCT. DUGS.
- 10 STEEL BEAM, SEE STRUCT. DUGS.
- 11 TUBE STEEL, SEE STRUCT. DUGS.
- 12 EVAPORATIVE COOLER, SEE MECH. DUGS.
- 13 SIDEWALL GIRT, SEE STRUCT. DUGS.
- 14 8" DIA. STEEL BOLLARD
- 15 CONCRETE ROOF TILE
- 16 30 ROOF FELT
- 17 FLYWOOD SHEATHING
- 18 PREFABRICATED ROOF TRUSSES
- 19 R-19 BATT INSULATION
- 20 SUSPENDED ACOUSTICAL TILE SYSTEM
- 21 1-1/2" DIA. PIPE RAIL, PTD. SEE A7.01 FOR COLOR
- 22 CONCRETE STAIRS
- 23 EXISTING STRUCTURE (SHOWN LIGHT)
- 24 EXISTING CONC. SLAB (SHOWN LIGHT)
- 25 EXISTING CEILING
- 26 SUSPENDED GYP. BD. SOFFIT
- 27 TOOLED NOSING, TYP.
- 28 METAL ROOF PANELS
- 29 METAL FASCIA PANEL, TO MATCH ROOF
- 30 PREFABRICATED STEEL FRAME, SEE STRUCT. DUGS.
- 31 PURLIN
- 32 TRENCH DRAIN
- 33 CONC. FOOTING, SEE STRUCT.
- 34 T3 6 x 6, PTD. COLOR B
- 35 T3 3 x 3, PTD. COLOR B
- 36 T3 6 x 2, PTD. COLOR B
- 37 T3 10 x 6, PTD. COLOR B
- 38 SQUARE CONC. PIER BELOW 2 x 3 WALL BELOW
- 40 GYP. BD. SOFFIT
- 41 ALUMINUM STOREFRONT SYSTEM
- 42 TAPERED RIGID INSULATION
- 43 SINGLE-PLY ROOFING
- 44 TJI ROOF JOIST, SEE STRUCT.
- 45 WOOD BEAM - SEE STRUCT.
- 46 A/C UNIT - SEE MECHANICAL
- 47 EXHAUST FAN - SEE MECH.
- 48 EXTERIOR CEMENT PLASTER
- 49 2x6 WOOD FRAMING
- 50 PREFABRICATED METAL WALL PANEL, INSULATED
- 51 DOWNSPOUT
- 52 CONC. LOADING DOCK, SEE STRUCT.
- 53 TRANSLUCENT ROOF PANEL BY BLDG. MANUFACTURER, SEE ROOF PLAN A112
- 54 BRACING, SEE STRUCT.
- 55 LIGHT FIXTURE
- 56 RAMP BEYOND

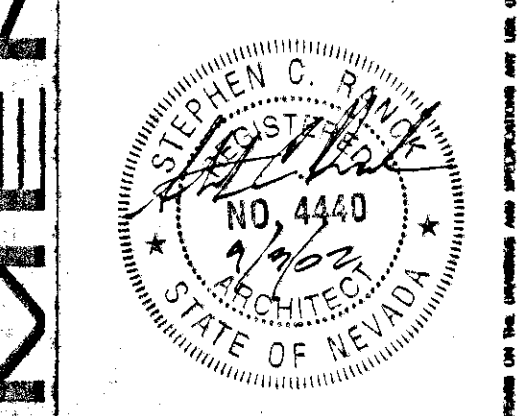


REVISIONS
283002

TATE SNYDER KIMSEY ARCHITECTS
1000 Las Vegas Blvd. North, Suite 2000, Las Vegas, NV 89168
TEL: (702) 253-3333
FAX: (702) 253-3333
WWW.TSKARCHITECTS.COM

DEPARTMENT OF PUBLIC WORKS

CITY OF LAS VEGAS WEST SERVICE YARD
BUFFALO DRIVE AND PEAK ROAD
LAS VEGAS, NEVADA
BUILDING SECTIONS
WASH BAYS



OWNER: CITY OF LAS VEGAS
DEPARTMENT OF PUBLIC WORKS
ARCHITECTURAL SERVICES

400 EAST STEWART AVENUE
LAS VEGAS, NEVADA 89101
PHONE: (702) 222-6333
FAX: (702) 222-3233
TDD: (702) 222-4108

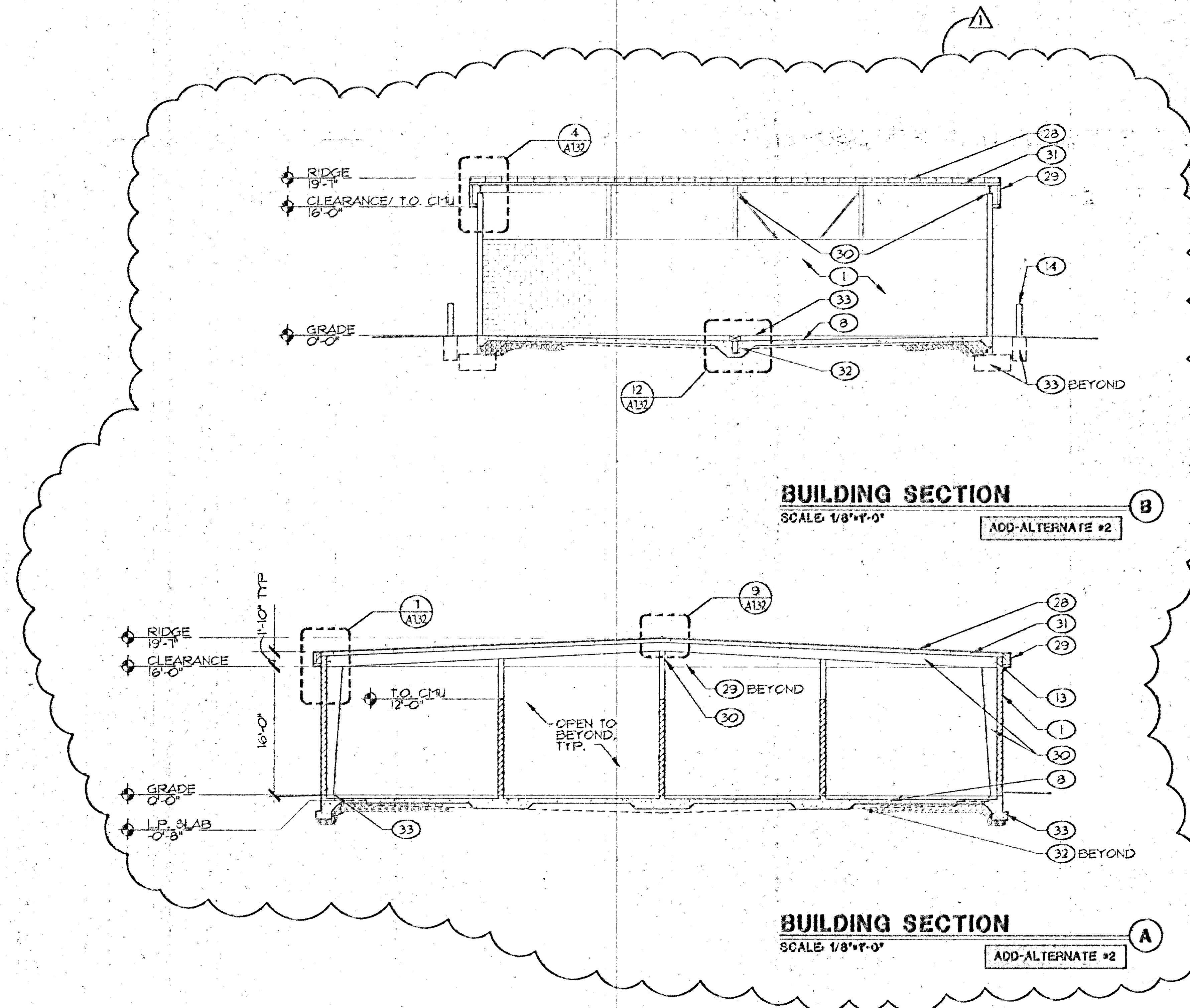
MJP: JAN 14 2001

Does Not Include Structural, Electrical, Plumbing, Mechanical or Other Improvements Unless Specifically Indicated Without Approval. Not a Permit to Violate Any Ordinance.

DATE: 04/07/15
SITE: 283002
SCALE: 1/4" = 1'-0"
JOB NO: 02.1534.03
DRAWING NO: 107-V3548

RECEIVED
SEP 06 2002
CITY OF LAS VEGAS
BUILDING DEPT.

A7.15



BUILDING SECTION
SCALE: 1/8" = 1'-0"
ADD-ALTERNATE #2

BUILDING SECTION
SCALE: 1/8" = 1'-0"
ADD-ALTERNATE #2