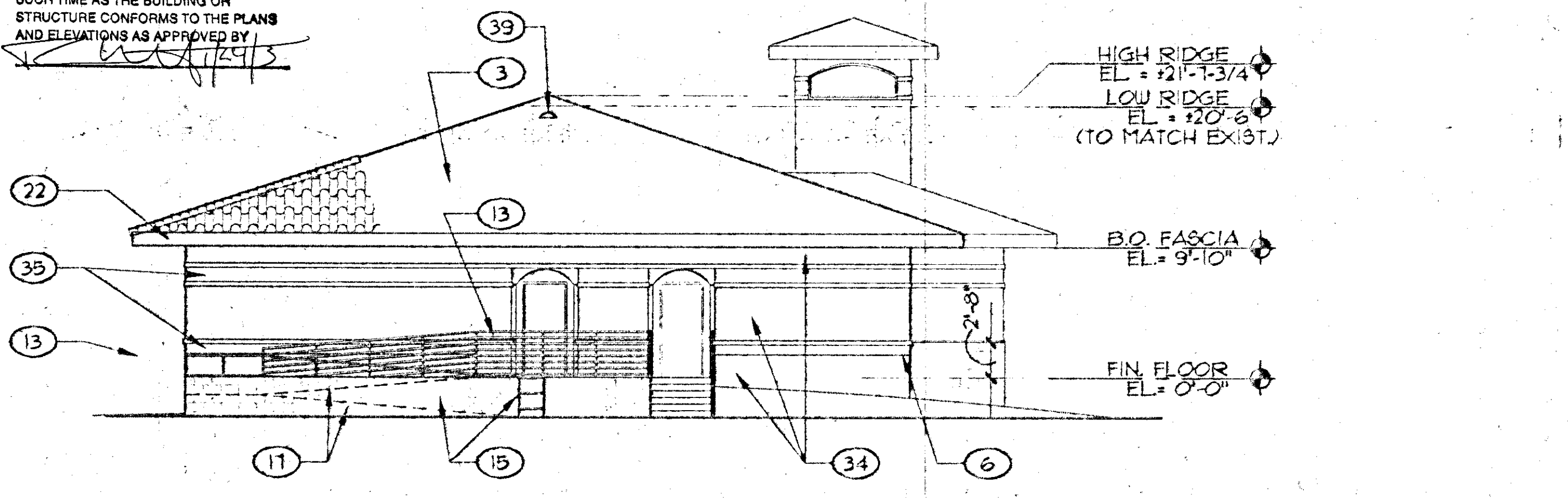
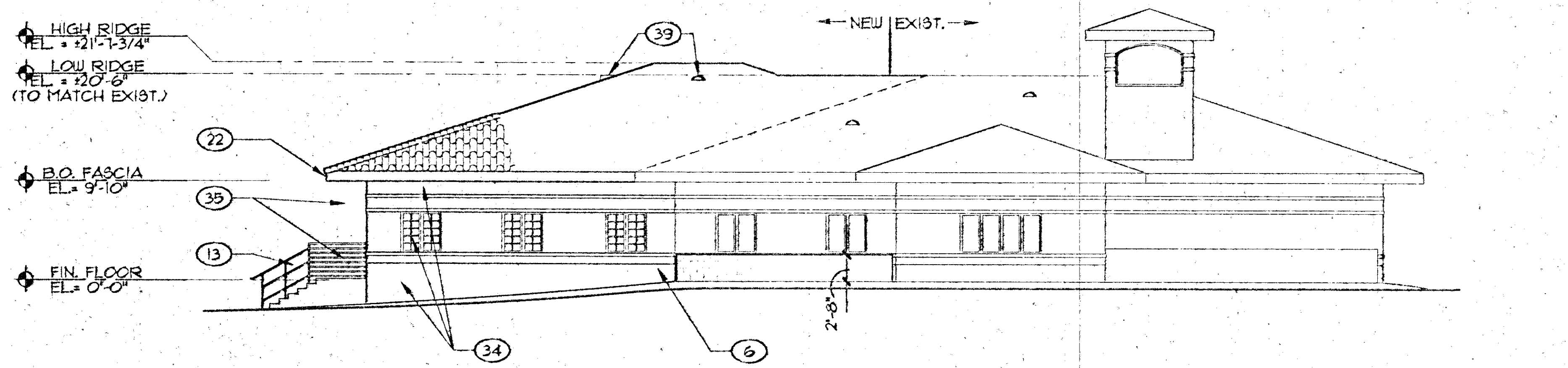


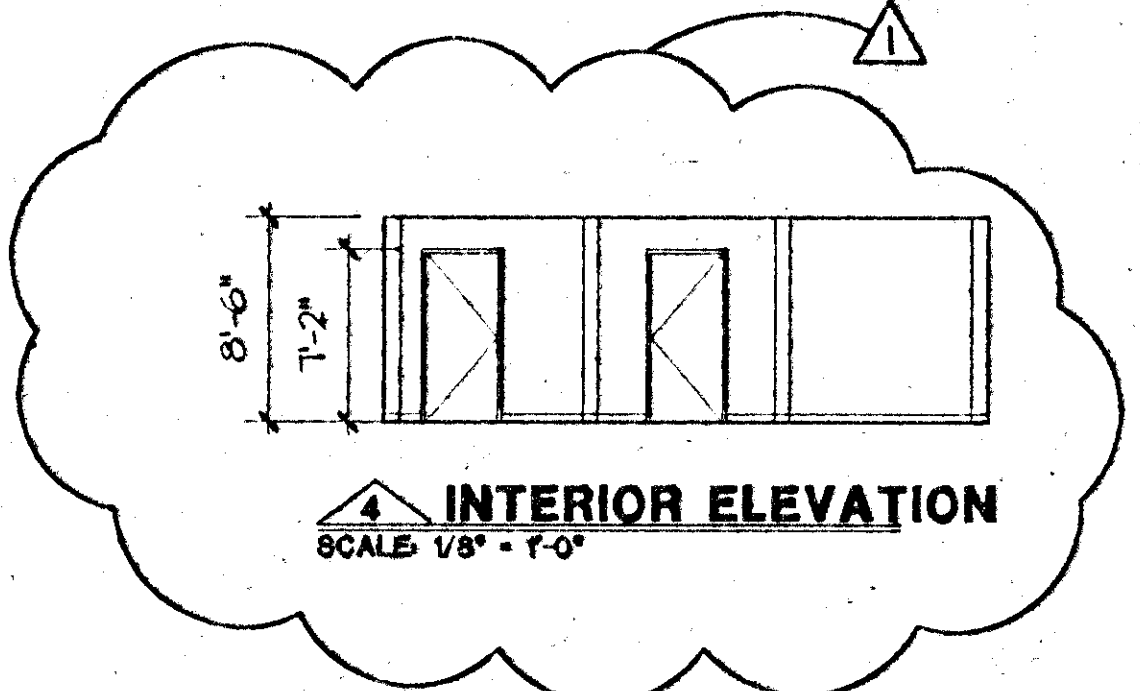
**SOUTH ELEVATION**  
SCALE: 1/8" = 1'-0"



**EAST ELEVATION**  
SCALE: 1/8" = 1'-0"



**NORTH ELEVATION**  
SCALE: 1/8" = 1'-0"



**INTERIOR ELEVATION**  
SCALE: 1/8" = 1'-0"

**WARNING:**  
ANY VARIATION IN THE ELEVATIONS AS SHOWN AND APPROVED HEREON MAY RESULT IN THE WITHHOLDING OF FINAL APPROVAL AND/OR A CERTIFICATE OF OCCUPANCY UNTIL SUCH TIME AS THE BUILDING OR STRUCTURE CONFORMS TO THE PLANS AND ELEVATIONS AS APPROVED BY

**KEYNOTES**  
SHEETS A6.11 - A6.14

- 1 EXTERIOR CEMENT PLASTER COLOR A - SEE COLOR LEGEND, A2.01
- 2 TUBE STEEL SHADE STRUCT. - PAINT COLOR B, SEE DETAIL 1/AT.30
- 3 CONCRETE TILE ROOF
- 4 STANDING SEAM METAL ROOF
- 5 INSULATED METAL WALL PANELS
- 6 CMU WALL
- 7 DOWNSPOUT (SEE A2.01 FOR COLOR)
- 8 OVERHEAD DOOR - SEE DOOR SCHEDULE
- 9 STANDING SEAM METAL FASCIA
- 10 TUBE STEEL COLUMN - PAINTED (SEE A2.01 FOR COLOR)
- 11 STEEL DECK CANOPY, PTD.
- 12 PERFORATED STEEL SCREEN
- 13 1 1/2" STEEL PIPE RAILING - PAINTED (SEE A2.01 FOR COLOR)
- 14 CONCRETE STAIRS & LOADING DOCK
- 15 CMU RETAINING WALL
- 16 8" DIA. STEEL PIPE BOLLARD SEE STRUCTURAL DRAWINGS.
- 17 TOP OF RAMP BEYOND CMU ACCENT BAND
- 18 CERAMIC TILE ACCENT, SEE COLOR LEGEND, A2.01
- 20 NOT USED
- 21 EXTERIOR CEMENT PLASTER FRIEZE COLOR A - SEE COLOR LEGEND, A2.01
- 22 PLYWOOD FASCIA BOARD, PAINTED - SEE COLOR LEGEND, A2.01
- 23 CMU CONTROL JOINT, TYP.
- 24 LOUVER (TYP), SEE MECHANICAL DRAWINGS
- 25 EVAPORATIVE COOLER, SEE MECHANICAL DRAWINGS
- 26 EXHAUST FAN (TYP), SEE MECH DRAWINGS
- 27 BRUSHED ALUMINUM LETTERS, 9" TALL, "FUTURA LT BD" FONT
- 28 BRUSHED ALUMINUM LETTERS, 6-3/4" TALL, "FUTURA LT BD" FONT
- 29 EXHAUST FAN (NORTH ELEV ONLY), SEE MECH. DWGS.
- 30 CONCRETE FOOTING, SEE STRUCT. DWGS. FOR SIZE
- 31 FIN. GRADE BEYOND
- 32 METAL ROOF
- 33 METAL PANEL FASCIA
- 34 EXTERIOR CEMENT PLASTER TO MATCH EXISTING COLOR
- 35 CERAMIC TILE TO MATCH EXISTING COLOR
- 36 2'-0" DRAINAGE OPENING
- 37 LIGHT FIXTURE
- 38 ROOF DRAINS
- 39 ROOF VENT
- 40 SAUDEX COLLECTOR - SEE MECH. DWGS.

**GENERAL NOTES**

- 1 SEE BUILDING SECTIONS AND WALL SECTIONS FOR FINISH HEIGHTS AND CONSTRUCTION
- 2 FOR MATERIALS HANDLING BUILDING A6.12, SEE FLOOR PLAN A1.12 FOR INTERIOR SLAB ELEVATIONS

**CMU LEGEND**

	CMU A SEE SHEET A2.01
	CMU B SEE SHEET A2.01



**DEPARTMENT OF PUBLIC WORKS**

CITY OF LAS VEGAS  
BUFFALO DRIVE AND PEAK ROAD  
LAS VEGAS, NEVADA  
EXTERIOR ELEVATIONS  
IT ADDITION

TATE SNYDER KIMSEY ARCHITECTS  
1000 EAST STEWART AVENUE, SUITE 200  
LAS VEGAS, NEVADA 89101  
PHONE: (702) 229-5535  
FAX: (702) 282-3232  
TDD: (702) 386-9108



OWNER: CITY OF LAS VEGAS  
DEPARTMENT OF PUBLIC WORKS  
ARCHITECTURAL SERVICES

DATE	JAN 14 2003
FILE	047614
SCALE	1/8" = 1'-0"
SHEET NO.	02.5341.03
DATE	08.30.02
REVISED	07-V3543

PLANS APPROVED  
ARCHITECTURAL  
Building & Safety Dept.  
City of Las Vegas, Nevada

MJK JAN 14 2003

Does Not Authorize Structural, Electrical, Plumbing/Mechanical or Off-Site Improvements. Make No Change Without Approval. Plans Not a Permit to Violate Any Ordinance.

RECEIVED  
SEP 06 2002  
CITY OF LAS VEGAS  
BUILDING DEPT.