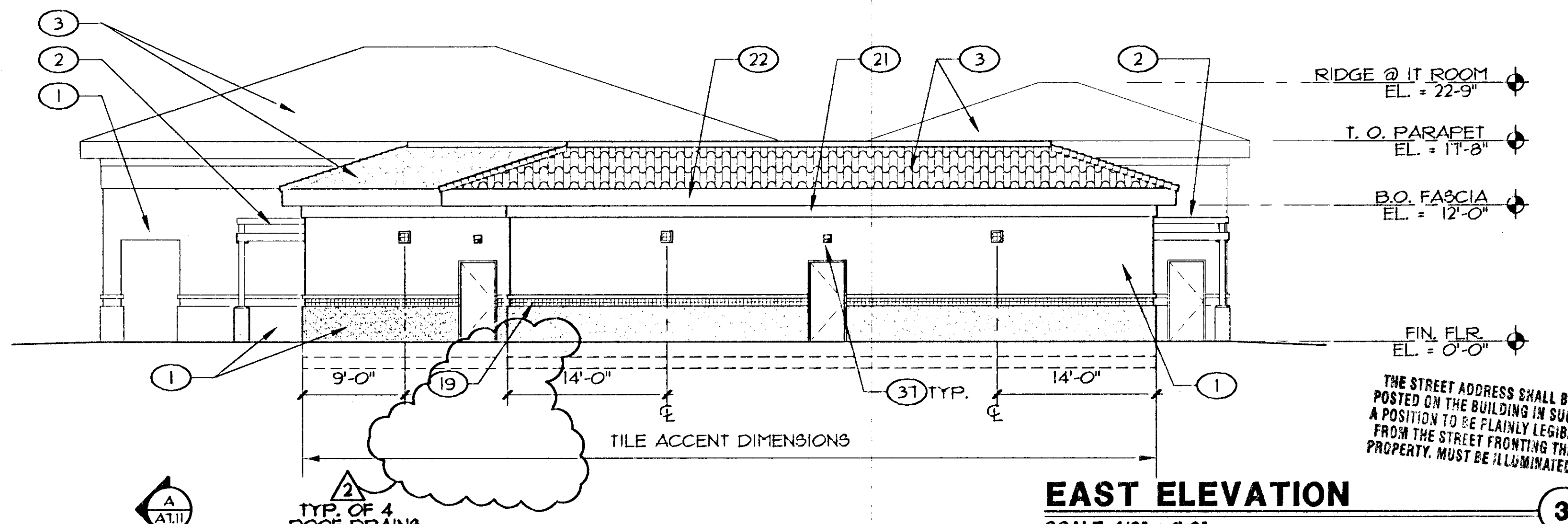
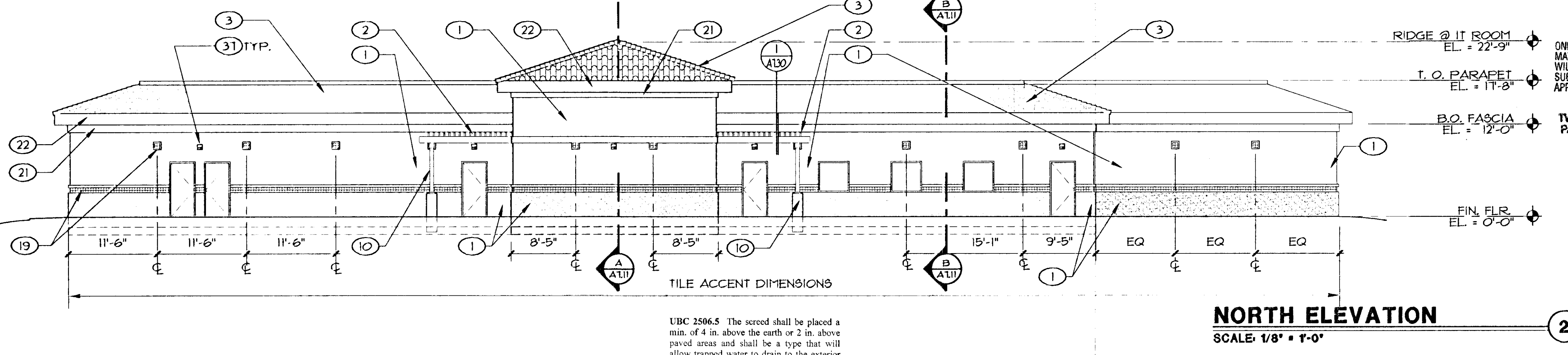


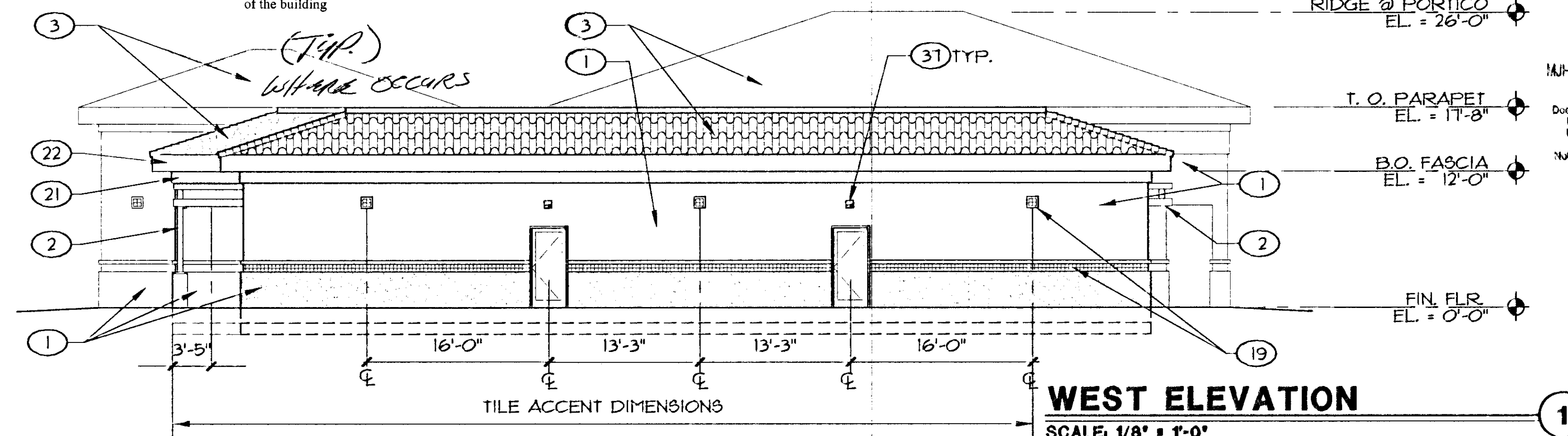
SOUTH ELEVATION
SCALE: 1/8" = 1'-0"



EAST ELEVATION
SCALE: 1/8" = 1'-0"



NORTH ELEVATION
SCALE: 1/8" = 1'-0"



WEST ELEVATION
SCALE: 1/8" = 1'-0"

WARNING:

ANY VARIATION IN THE ELEVATIONS AS SHOWN AND APPROVED HEREON MAY RESULT IN THE WITHHOLDING OF FINAL APPROVAL AND/OR A CERTIFICATE OF OCCUPANCY UNTIL SUCH TIME AS THE BUILDING OR STRUCTURE CONFORMS TO THE PLANS AND ELEVATIONS AS APPROVED BY

UBC 2506.5 The screed shall be placed a min. of 4 in. above the earth or 2 in. above paved areas and shall be a type that will allow trapped water to drain to the exterior of the building

THE STREET ADDRESS SHALL BE POSTED ON THE BUILDING IN SUCH A POSITION TO BE PLAINLY LEGIBLE FROM THE STREET FRONTING THE PROPERTY. MUST BE ILLUMINATED.

ONLY APPROVED STUCCO MATERIALS AND METHODS WILL BE ACCEPTABLE. SUBMIT SPECIFICATIONS FOR APPROVAL.

TWO LAYERS KRAFT PAPER OVER O.S.B.

PLANS APPROVED ARCHITECTURAL Building & Safety Dept. City of Las Vegas, Nevada

JAN 14 2003

Does Not include Structural, Electrical, Plumbing/Mechanical or Civil Improvements. Make No Changes Without Approval. Plans are Not a Permit to Violate Any Ordinance.

KEYNOTES	
SHEETS A6.11 - A6.14	
1	EXTERIOR CEMENT PLASTER COLOR A - SEE COLOR LEGEND, A2.01
2	TUBE STEEL SHADE STRUCT. - PAINT COLOR B, SEE DETAIL 1/A1.30
3	CONCRETE TILE ROOF
4	STANDING SEAM METAL ROOF
5	INSULATED METAL WALL PANELS
6	CMU WALL
7	DOWNSPOUT (SEE A2.01 FOR COLOR)
8	OVERHEAD DOOR - SEE DOOR SCHEDULE
9	STANDING SEAM METAL FASCIA
10	TUBE STEEL COLUMN - PAINTED (SEE A2.01 FOR COLOR)
11	STEEL DECK CANOPY, PTD.
12	PERFORATED STEEL SCREEN
13	1 1/2" STEEL PIPE RAILING - PAINTED (SEE A2.01 FOR COLOR)
14	CONCRETE STAIRS & LOADING DOCK
15	CMU RETAINING WALL
16	8" DIA. STEEL PIPE BOLLARD, SEE STRUCTURAL DRAWINGS.
17	TOP OF RAMP BEYOND CMU ACCENT BAND
18	CERAMIC TILE ACCENT, SEE COLOR LEGEND, A2.01
19	NOT USED
20	NOT USED
21	EXTERIOR CEMENT PLASTER FRIEZE COLOR A - SEE COLOR LEGEND, A2.01
22	PLYWOOD FASCIA BOARD, PAINTED - SEE COLOR LEGEND, A2.01
23	CMU CONTROL JOINT, TYP.
24	LOUVER (TYP), SEE MECHANICAL DRAWINGS
25	EVAPORATIVE COOLER, SEE MECHANICAL DRAWINGS
26	EXHAUST FAN (TYP), SEE MECH DRAWINGS
27	BRUSHED ALUMINUM LETTERS, 9" TALL, "FUTURA LT BD" FONT
28	BRUSHED ALUMINUM LETTERS, 6-3/4" TALL, "FUTURA LT BD" FONT
29	EXHAUST FAN (NORTH ELEV ONLY), SEE MECH. DWGS.
30	CONCRETE FOOTING, SEE STRUCT. DWGS. FOR SIZE
31	FIN. GRADE BEYOND
32	METAL ROOF
33	METAL PANEL FASCIA
34	EXTERIOR CEMENT PLASTER TO MATCH EXISTING COLOR
35	CERAMIC TILE TO MATCH EXISTING COLOR
36	2'-0" DRAINAGE OPENING
37	LIGHT FIXTURE
38	NOT USED
39	ROOF VENT
40	SAWDUST COLLECTOR - SEE MECH. DWGS.

GENERAL NOTES
SEE BUILDING SECTIONS AND WALL SECTIONS FOR FINISH HEIGHTS AND CONSTRUCTION

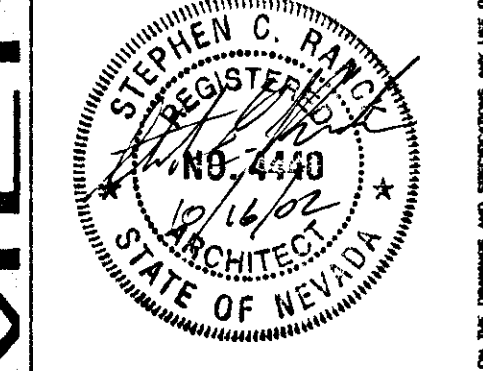
2 FOR MATERIALS HANDLING BUILDING A6.12, SEE FLOOR PLAN A1.12 FOR INTERIOR SLAB ELEVATIONS



REVISIONS
1 0830.01
2 1016.01

CONTACT
TATE SNYDER KIMSEY ARCHITECTS
1000 West Flamingo Avenue, Suite 1000, Las Vegas, NV 89102
TEL: (702) 458-3000 FAX: (702) 458-3001
WWW: www.tskarch.com

CITY OF LAS VEGAS WEST SERVICE YARD
BUFFALO DRIVE AND PEAK ROAD
LAS VEGAS, NEVADA
EXTERIOR ELEVATIONS
FIELD OPERATIONS BUILDING



OWNER: CITY OF LAS VEGAS
DEPARTMENT OF PUBLIC WORKS
ARCHITECTURAL SERVICES

400 EAST STEWART AVENUE
LAS VEGAS, NEVADA 89101
PHONE: (702) 229-5935
FAX: (702) 382-2322
TDD: (702) 386-9108

DATE	DESCRIPTION
FILE	0474611
DATE	0830.01
SCALE	1/8" = 1'-0"
BID NO	0215341.09
ELEV. NO	101-V3548

