

February 5, 2004
 City of Las Vegas
 Department of Building and Safety
 731 S. Fourth Street,
 Las Vegas, NV 89101-6918

ARCHITECTURAL PLANS MODIFICATION
 City of Las Vegas Project #: C-241-02
 Project Description: I.T. Addition to Exist. Sanitation Bldg., 2900 Ronemus Dr.
 Accessible Route to the Public Way


Plans Examiner: Mike Hazard

Dear Mr. Hazard:
 The following is a modification to the previously approved drawings for this project:

I.T. Addition Floor Plan - Sheet A1.14

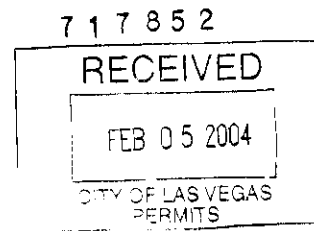
The Delta #12 change on this sheet includes removing and replacing a portion of the existing sidewalk and curb and adding a new portion of sidewalk to complete a new accessible route to the public way along the north side of the building. This was based on our 1/30/04 letter to try to improve the existing sidewalk (see attached) and our phone conversation later that day that this would not be acceptable as an accessible route to the public way.

Please call our office if there are any comments or questions.

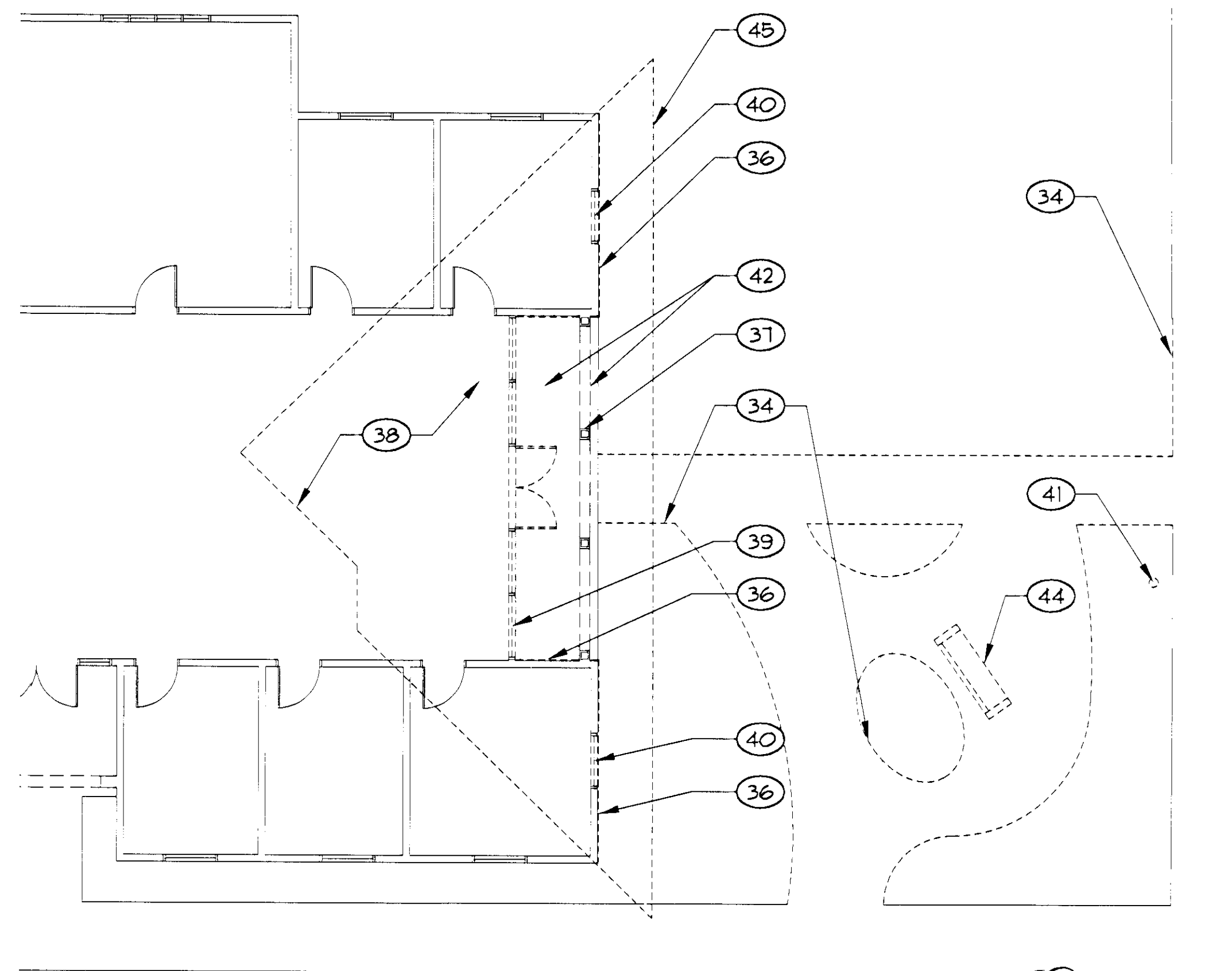
Sincerely,


Stephen C. Ranck, A.I.A.

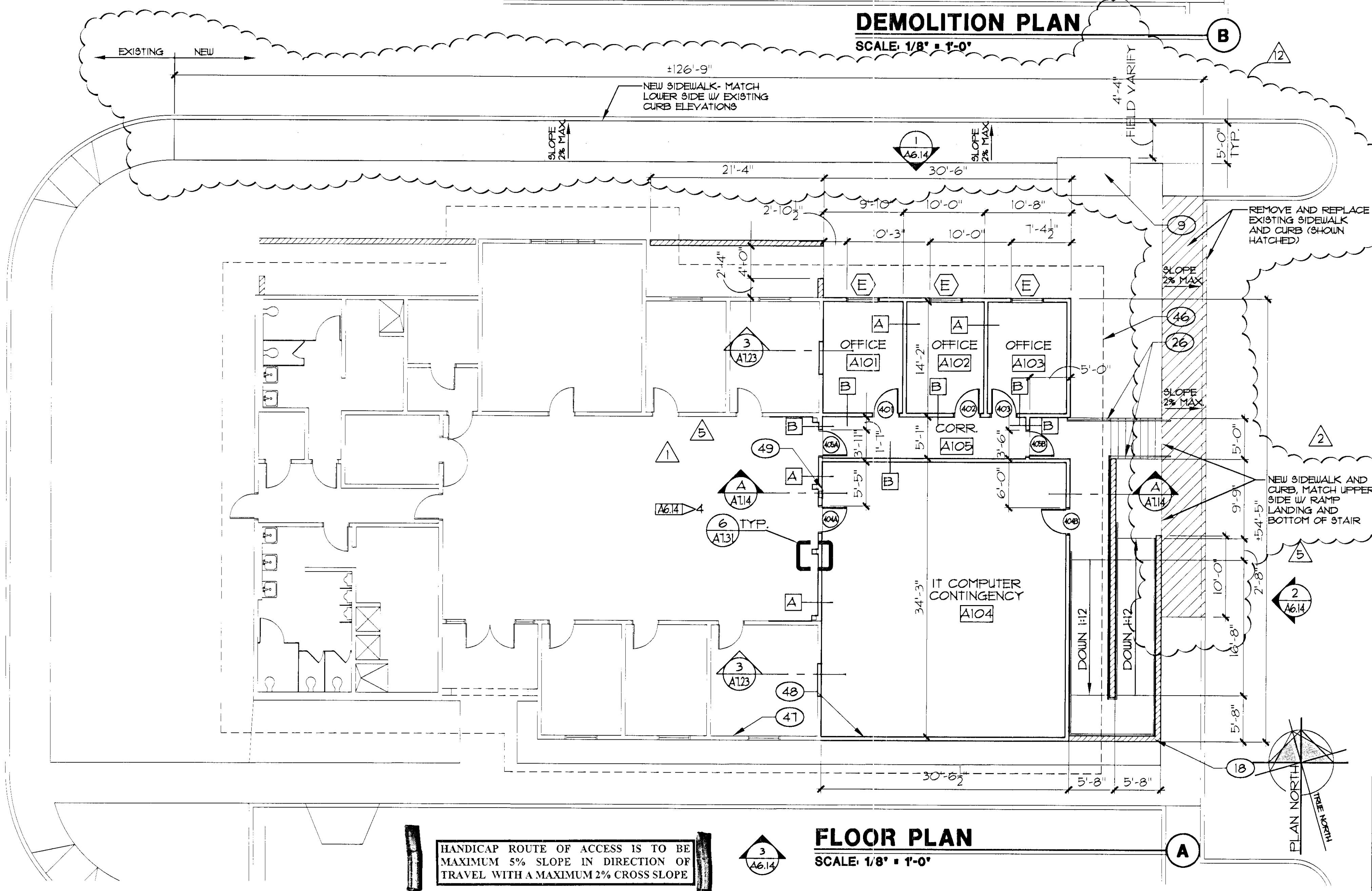
Cc: Pat Bate, C.L.V. O.A.S.



702-514-3929 727-7414 (fax) 2000
 702-878-3231 702-878-3232 (fax)
 702-514-3929 702-878-3232 (fax)
 www.tate-snyder-kimsey.com www.tate-snyder-kimsey.com



DEMOLITION PLAN
 SCALE: 1/8" = 1'-0"

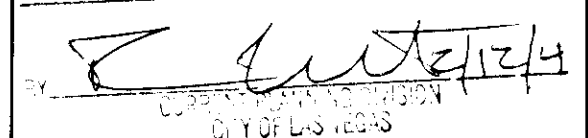


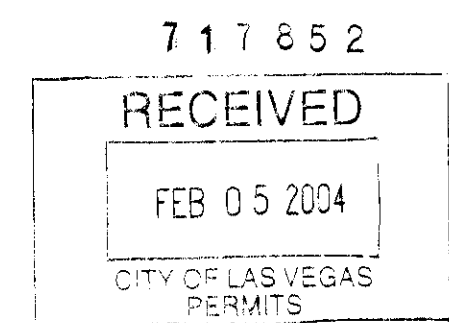
FLOOR PLAN
 SCALE: 1/8" = 1'-0"

HANDICAP ROUTE OF ACCESS IS TO BE MAXIMUM 5% SLOPE IN DIRECTION OF TRAVEL WITH A MAXIMUM 2% CROSS SLOPE

KEYNOTES SHEETS A1.11 - A1.15	
1	4' x 12' DUSTLESS WRITING SURFACE
2	WALL-MOUNTED PROJECT SCREEN @ 9'-0" AFF
3	VENDING MACHINE (NIC)
4	ICE MACHINE (NIC)
5	LOCKERS
6	LOCKER BENCH, N.I.C.
7	CMU RETAINING WALL
8	CONCRETE LOADING DOCK
9	CONCRETE EQUIPMENT PAD
10	TRENCH DRAIN, SEE PLUMBING DRAWINGS
11	CONCRETE SLAB
12	PERFORATED STEEL PLATE SEE DETAIL 1 / A5103
13	EYEWASH
14	WALL-MOUNTED MOP RACK
15	FLOOR DRAIN, SEE PLUMB. DUGS.
16	WALL-MOUNTED SINK
17	HOSE BIB
18	CMU WALL
19	PERFORATED METAL GATE SEE A/A5103
20	EXHAUST FAN, MOUNTED IN WALL PANEL ABOVE, SEE MECH. DUGS.
21	LOCATE OWNER-FURNISHED MEMORIAL BENCH
22	CONSTRUCTION JOINT, SEE STRUCTURAL DRAWINGS
23	BOLLARD, TYP
24	METAL ROOF
25	STEEL FRAMING, SEE STRUCTURAL DRAWINGS
26	1-1/2" DIA. STEEL PIPE RAILING, PTD. (SEE A201 FOR COLOR), SEE ELEV.
27	8" O.D. STEEL PIPE BOLLARD, PAINTED
28	OPENING AT FLOOR LEVEL FOR TRENCH DRAIN, SEE STRUCTURAL
29	CONCRETE FOOTING, SEE STRUCT. DUGS.
30	TUBE STEEL COLUMN, PTD. SEE STRUCT. DUGS.
31	FLOOR SINK, SEE PLUMB. DUGS.
32	DRINKING FOUNTAIN, SEE PLUMB. DUGS.
33	PREFABRICATED WALL PANELS
34	REMOVE EXIST. SIDEWALK AND LANDSCAPING
35	WOVEN-WIRE PARTITIONS
36	REMOVE EXIST. STUCCO FINISH & METAL LATH TO EXPOSE EXIST. SHEATHING
37	REMOVE EXIST. STUCCO FR/ COLUMNS, TYP. OF 4 COLUMNS TO REMAIN
38	REMOVE EXIST. CONC. TILE FROM ROOF AREA SHOWN ABOVE
39	REMOVE EXIST. STOREFRONT (NON-LOAD BEARING)
40	REMOVE EXIST. WINDOW
41	REMOVE AND RELOCATE EXIST. SITE LAMP. SEE ELEC. DUGS.
42	REMOVE EXIST. ARCHES & STUCCO SOFFIT FR/ ABOVE
43	ROOF ACCESS LADDER
49	RECESSED FIRE EXT. CAB.
50	FIRE EXT. ON BRACKET

KEYNOTES CONTINUED	
44	REMOVE AND RELOCATE EXIST. MEMORIAL BENCH. SEE SITE PLAN A5102 FOR NEW LOCATION
45	REMOVE EXIST. EAVE TO FACE OF EAST WALL
46	NEW SOFFIT ABOVE
47	EXIST. WALLS SHOWN LIGHT
48	NEW WALLS SHOWN DARK


APPROVED
 Revision only

 CITY OF LAS VEGAS



APPROVAL IS FOR CLOUDED AREAS OR LATEST REVISIONS ONLY. SEE ORIGINALS FOR OTHER REQUIREMENTS.

PLANS APPROVED
 ARCHITECTURAL
 February 10 2004

OWNER: CITY OF LAS VEGAS
 DEPARTMENT OF PUBLIC WORKS
 ARCHITECTURAL SERVICES




REVISIONS
 02.04.04

CONSULTANT
 TATE SNYDER KIMSEY ARCHITECTS
 1500 South Vegas Court Henderson, Nevada 89015 P: 702-460-3000 FAX: 702-460-3006
 WWW.TATE-SNYDER-KIMSEY.COM

DEPARTMENT OF PUBLIC WORKS

CITY OF LAS VEGAS WEST SERVICE YARD
 BUFFALO DRIVE AND PEAK ROAD
 LAS VEGAS, NEVADA
 FLOOR PLAN
 I.T. ADDITION



OWNER: CITY OF LAS VEGAS
 DEPARTMENT OF PUBLIC WORKS
 ARCHITECTURAL SERVICES

400 EAST STEWART AVENUE
 LAS VEGAS, NEVADA 89101
 PHONE: (702) 229-5935
 FAX: (702) 382-3232
 TDD: (702) 386-9118

DRAWN: LIFE
 FILE: 047A114
 DATE: 03/14/03
 SCALE: 1/8" = 1'-0"
 REVISION: 02.15341.09
 DRAWING NO: 107-V3548

A1.14