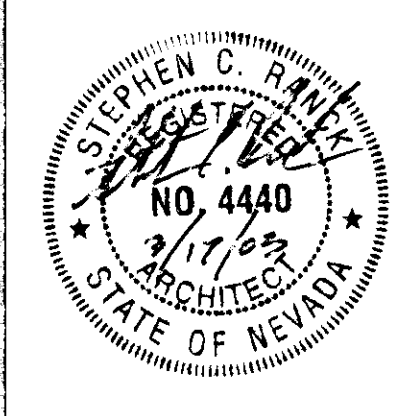


REVISION B 03.14.03

TATE SNYDER KIMSEY ARCHITECTS
CONSULTANT
1000 South Virginia Street, Suite 200, Las Vegas, NV 89102
TEL: (702) 386-1000 FAX: (702) 386-1001
WWW.TSKARCHITECTS.COM

CITY OF LAS VEGAS DEPARTMENT OF PUBLIC WORKS
CITY OF LAS VEGAS WEST SERVICE YARD
BUFFALO DRIVE AND PEAK ROAD
LAS VEGAS, NEVADA
FLOOR PLAN
MATERIALS HANDLING BUILDING



OWNER: CITY OF LAS VEGAS
DEPARTMENT OF PUBLIC WORKS
ARCHITECTURAL SERVICES

400 EAST STEWART AVENUE
LAS VEGAS, NEVADA 89101
PHONE: (702) 229-6535
FAX: (702) 386-3932
TDD: (702) 386-9108

DRAWN: LFE
FILE: 047A112b
DATE: 03.14.03
SCALE: 1/8" = 1'-0"
BLD NO: 02.1534103
REV/DWG NO: 107-V3548

A1.12B

KEYNOTES

SHEETS A1.11 - A1.15

- 1 4' x 12' DUSTLESS WRITING SURFACE
- 2 WALL-MOUNTED PROJECT SCREEN @ 9'-0" AFF
- 3 VENDING MACHINE (NIC)
- 4 ICE MACHINE (NIC)
- 5 LOCKERS
- 6 LOCKER BENCH, N.I.C.
- 7 CMU RETAINING WALL
- 8 CONCRETE LOADING DOCK
- 9 CONCRETE EQUIPMENT PAD
- 10 TRENCH DRAIN, SEE PLUMBING DRAWINGS
- 11 CONCRETE SLAB
- 12 PERFORATED STEEL PLATE, SEE DETAIL 1 / A6103
- 13 EYEWASH
- 14 WALL-MOUNTED MOP RACK
- 15 FLOOR DRAIN, SEE PLUMB. DWGS.
- 16 WALL-MOUNTED SINK
- 17 HOSE BIB
- 18 CMU WALL
- 19 PERFORATED METAL GATE, SEE A/A6103
- 20 EXHAUST FAN, MOUNTED IN WALL PANEL ABOVE, SEE MECH. DWGS.
- 21 LOCATE OWNER-FURNISHED MEMORIAL BENCH
- 22 CONSTRUCTION JOINT, SEE STRUCTURAL DRAWINGS
- 23 BOLLARD, TYP
- 24 METAL ROOF
- 25 STEEL FRAMING, SEE STRUCTURAL DRAWINGS
- 26 1-1/2" DIA. STEEL PIPE RAILING, FTD. (SEE A201 FOR COLOR), SEE ELEV.
- 27 8" O.D. STEEL PIPE BOLLARD, PAINTED
- 28 OPENING AT FLOOR LEVEL FOR TRENCH DRAIN, SEE STRUCTURAL
- 29 CONCRETE FOOTING, SEE STRUCT. DWGS.
- 30 TUBE STEEL COLUMN, FTD. SEE STRUCT. DWGS.
- 31 FLOOR SINK, SEE PLUMB. DWGS.
- 32 DRINKING FOUNTAIN, SEE PLUMB. DWGS.
- 33 PREFABRICATED WALL PANELS
- 34 REMOVE EXIST. SIDEWALK AND LANDSCAPING
- 35 WOVEN-WIRE PARTITIONS
- 36 REMOVE EXIST. STUCCO FINISH & METAL LATH TO EXPOSE EXIST. SHEATHING
- 37 REMOVE EXIST. STUCCO FR. COLUMNS, TYP. OF 4 COLUMNS TO REMAIN
- 38 REMOVE EXIST. CONC. TILE FROM ROOF AREA SHOWN ABOVE
- 39 REMOVE EXIST. STOREFRONT (NON-LOAD BEARING)
- 40 REMOVE EXIST. WINDOW
- 41 REMOVE AND RELOCATE EXIST. SITE LAMP, SEE ELEC. DWGS.
- 42 REMOVE EXIST. ARCHES & STUCCO SOFFIT FR/ ABOVE
- 43 ROOF ACCESS LADDER
- 44 RECESSED FIRE EXT. CAB.
- 50 FIRE EXT. ON BRACKET

- GENERAL NOTES
- 1 FOR A1.11, FIELD OPERATIONS BUILDING, ALL INTERIOR PARTITIONS TO BE TYPE 'A', U.N.O.
 - 2 FOR A1.11, FIELD OPERATIONS BUILDING, FF ELEV. 10'-0" IS EQUAL TO FF ELEV 105 ON CIVIL DRAWINGS
 - 3 FOR A1.12, MATERIALS HAND. BUILDING, FF ELEV. 10'-0" IS EQUAL TO FF ELEV 1052 ON CIVIL DRAWINGS
 - 4 FOR A1.13, FIELD MAINT. BUILDING, FF ELEV. 10'-0" IS EQUAL TO FF ELEV 1158 ON CIVIL DRAWINGS
 - 5 ALL FURNISHINGS N.I.C., U.N.O.
 - 6 SEE A230 FOR WALL TYPES

5 3 4 2 3 2

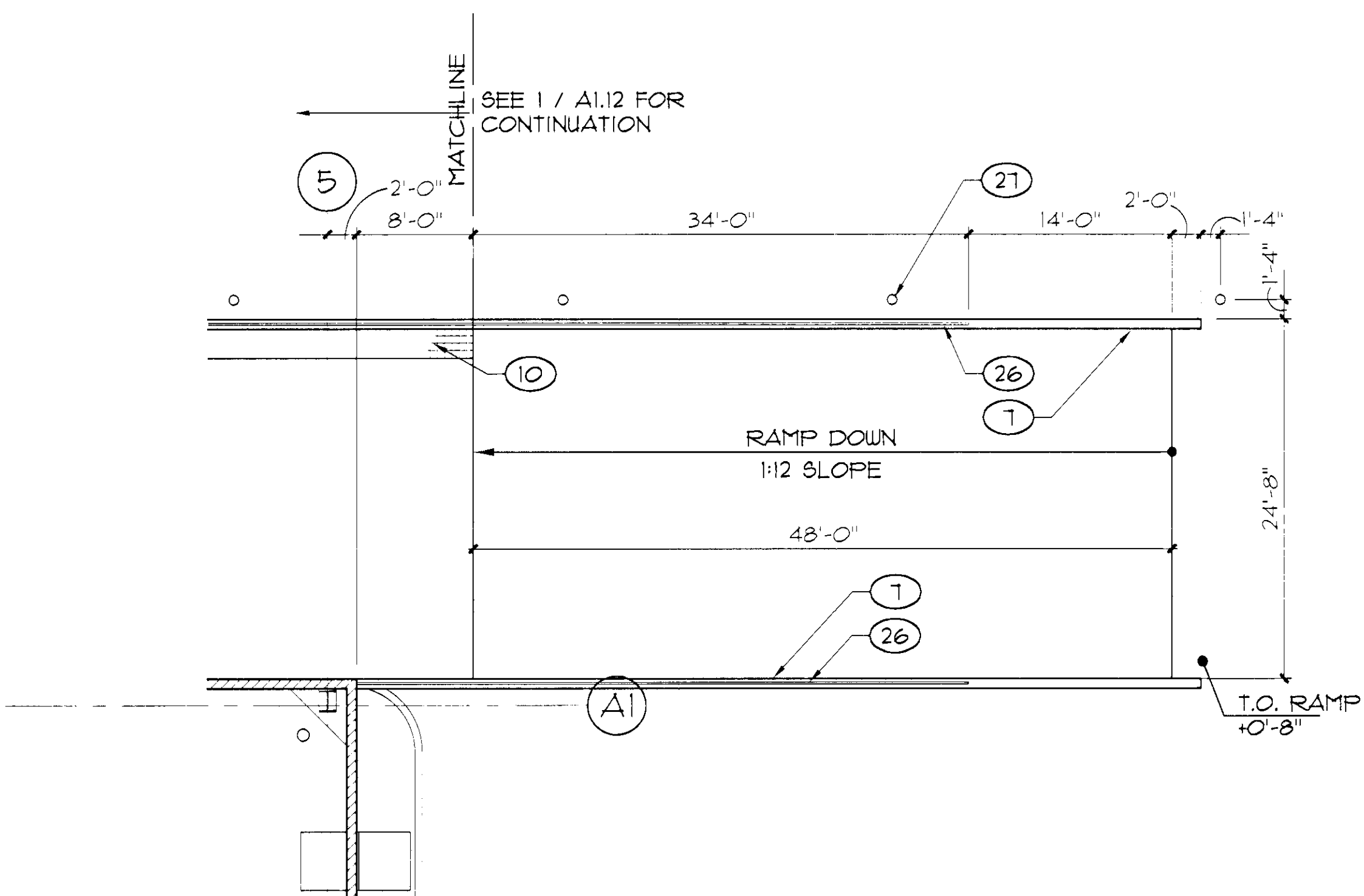
RECEIVED
MAR 18 2003
CITY OF LAS VEGAS PERMITS

PLANS APPROVED
ARCHITECTURAL
Building & Safety Dept
City of Las Vegas, Nevada

M/JF MAR 20 2003

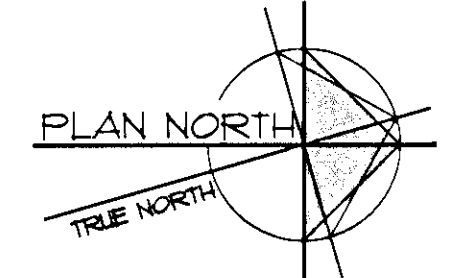
Does Not Authorize Structural, Electrical, Plumbing, Mechanical, or Civil Work unless Indicated. No Change Without Approval. Plan is Not a Permit to Violate Any Ordinance.

APPROVAL IS FOR CLOUDED AREAS OR LATEST REVISIONS ONLY. SEE ORIGINALS FOR OTHER REQUIREMENTS.



FLOOR PLAN

SCALE: 1/8" = 1'-0"



APPROVED
MATERIALS HANDLING BLDG
4/14/03