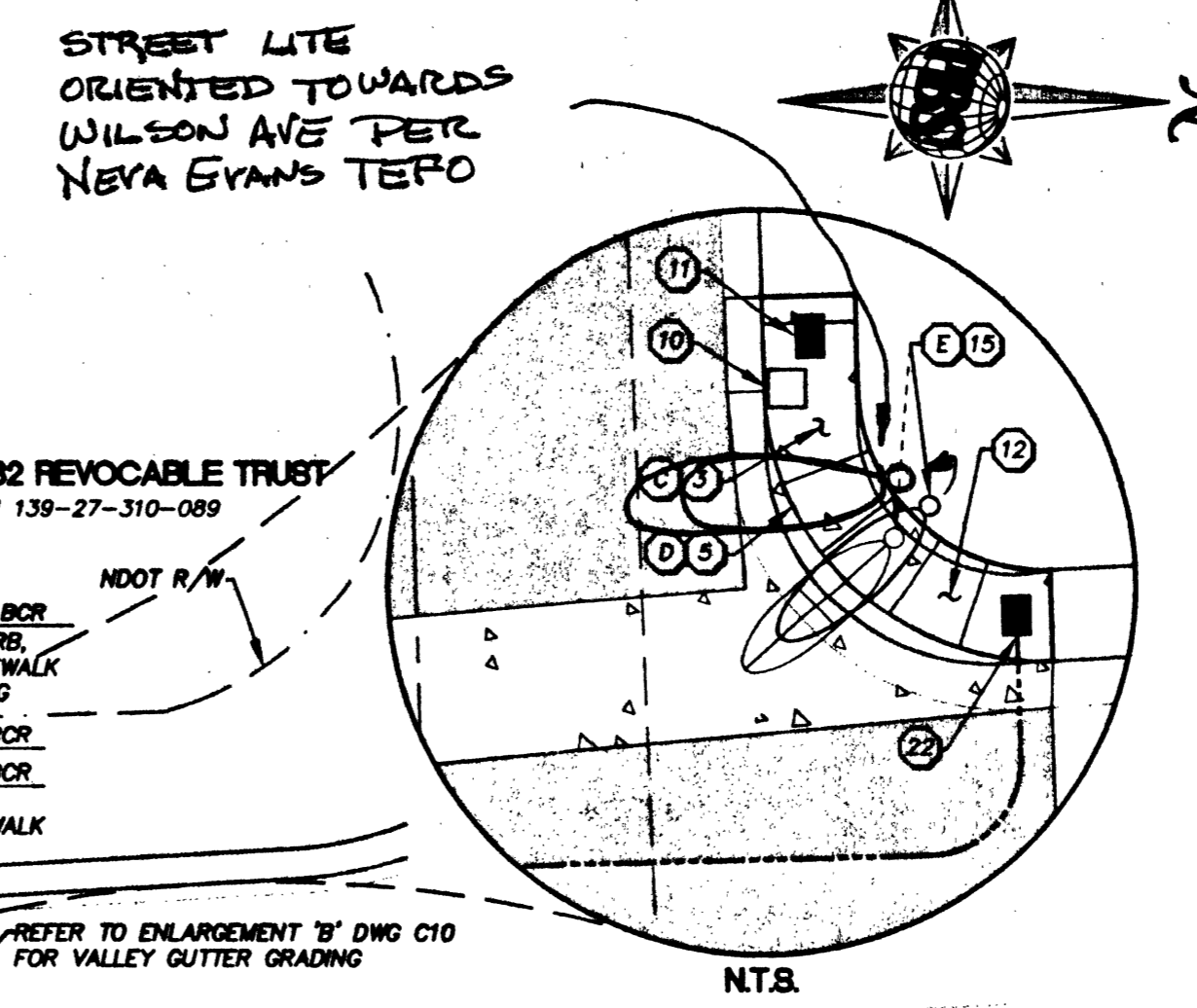
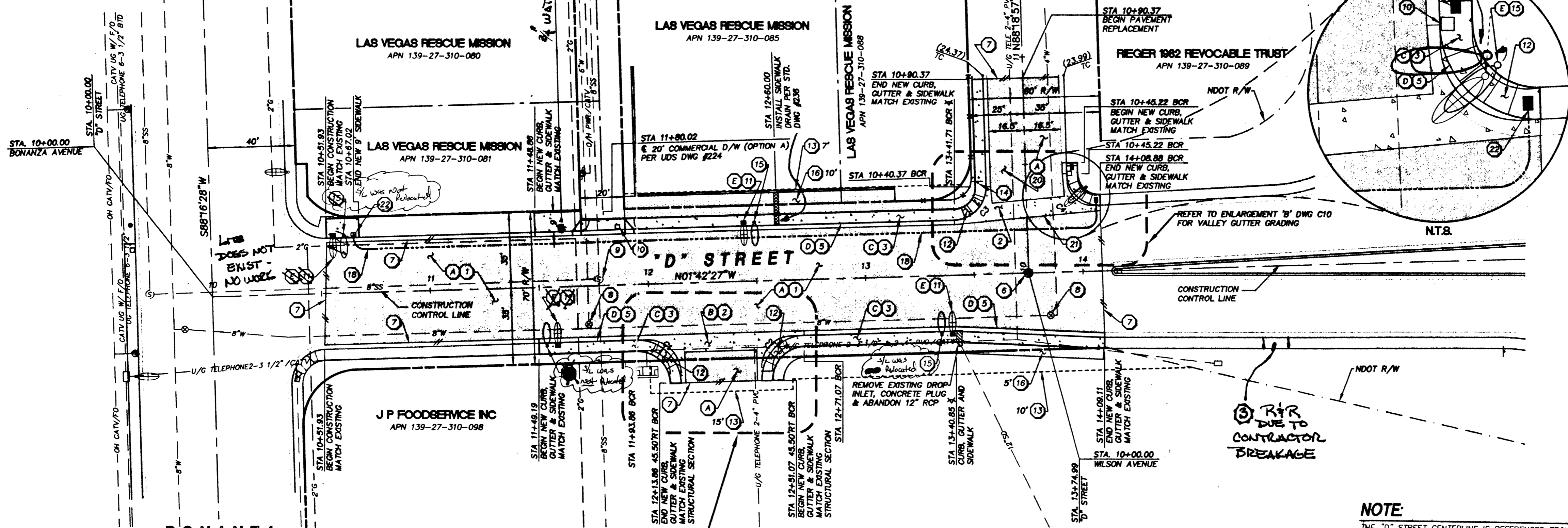


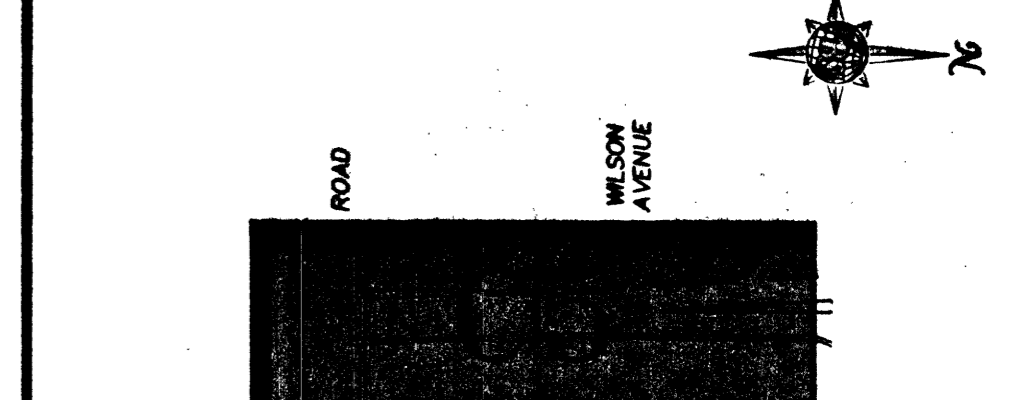
Call before you Dig
1-800-227-2600
Nevada Public Safety Department

Call before you Overhead
1-702-593-6111
Nevada Public Safety Department

Call before you Overhead
1-702-593-6111
Nevada Public Safety Department



7' STREET SHEET INDEX



BASIS OF BEARING
S89°52'47"W - CENTERLINE OF WASHINGTON AVE. AS SHOWN ON FINAL MAP BOOK 5, PAGE 20 (BONANZA TERRACE)

BENCHMARK
ELEVATIONS ARE BASED ON THE FOLLOWING CLV BENCHMARK:

STATION	NAVD 88 ELEVATION (ft.)	LOCATION
2LW01 28E	2040.2131	BM #51 FD. RIVET & PLATE IN T.C. NW RETURN WASHINGTON

CAUTION: "D" STREET & "J" STREET EXISTING UTILITIES ARE LOCATED ON THE PLANS FROM A SEARCH OF AVAILABLE RECORDS. CONTRACTOR TO VERIFY LOCATIONS AND DEPTHS PRIOR TO CONSTRUCTION.

KEY NOTES

REMOVAL ITEMS:

- REMOVE EXISTING AC PAVEMENT.
- REMOVE EXISTING VALLEY GUTTER.
- REMOVE EXISTING SIDEWALK AND RESIDENTIAL DRIVEWAY.
- REMOVE EXISTING 'L' TYPE CURB AND GUTTER.
- REMOVE EXISTING STREETLIGHT AND FOUNDATION.

CONSTRUCTION ITEMS:

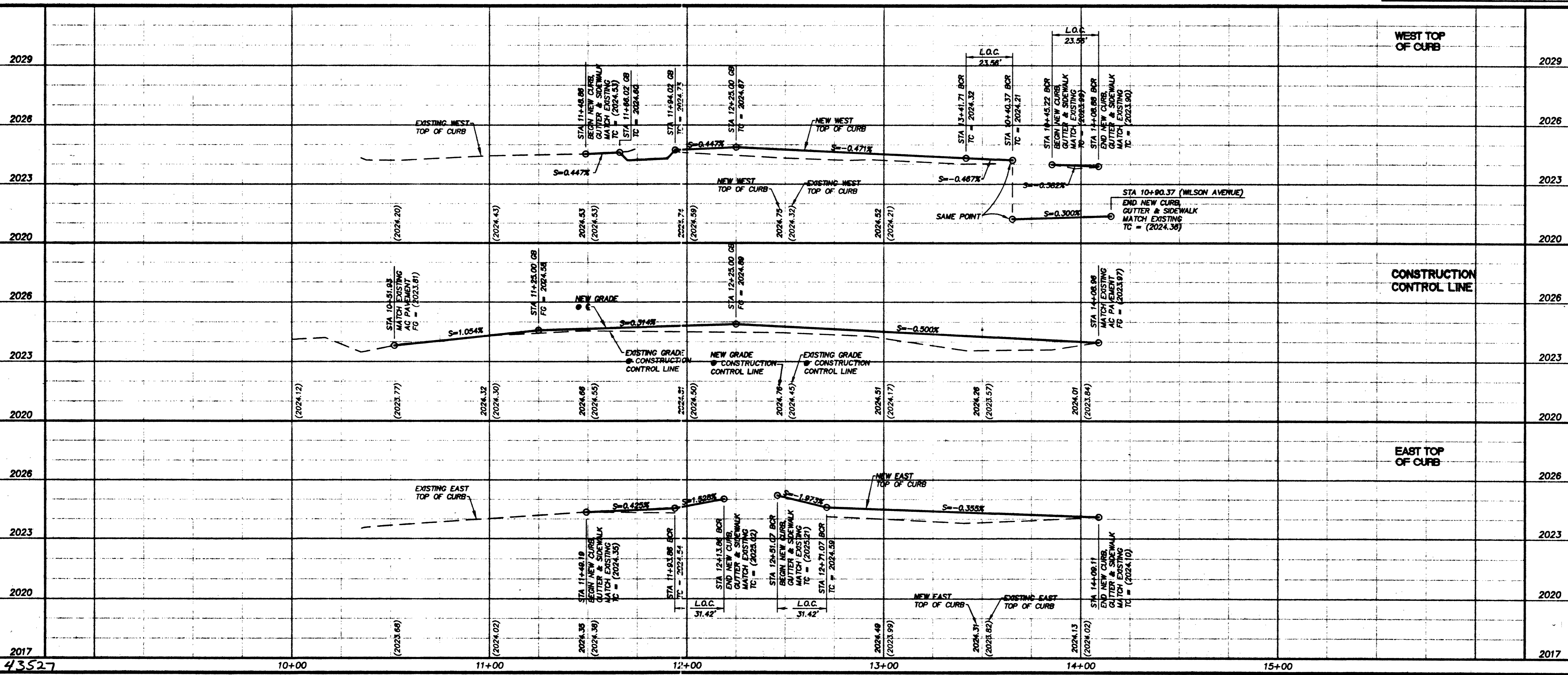
- CONSTRUCT STRUCTURAL SECTION PER TYPICAL SECTIONS, SEE DWG. C3.
- CONSTRUCT 8" VALLEY GUTTER PER USD DWG. #228 & DETAIL "C", DWG. C9.
- CONSTRUCT 5" SIDEWALK PER USD DWG. #234.
- CONSTRUCT RESIDENTIAL DRIVEWAY PER USD DWG. #223.
- CONSTRUCT 'L' TYPE CURB AND GUTTER PER USD DWG. #218.
- SET TYPE III MONUMENT PER USD DWG. #241.
- SAW CUT & MATCH EXISTING.
- ADJUST EXISTING VALVE BOX TO FG PER UDACS PLATE #8.
- ADJUST MANHOLE RING TO FG PER USD DWG. #408.
- REMOVE & REPLACE WITH NEW No. 3 1/2 PULLBOX PER USD DWG. #326 AND #328.
- INSTALL No. 3 1/2 PULLBOX AND REPUW WIRE PER DETAIL "B" DWG. C9.
- CONSTRUCT SIDEWALK RAMP PER USD DWG. #235, CASE 1.
- CONSTRUCTION EASEMENT AS NOTED.
- REMOVE AND RESET EXISTING SIGN AND NEW POST.
- CONSTRUCT STREETLIGHT FOUNDATION PER USD DWG. #321 (STREETLIGHT AND WIRE TO BE INSTALLED BY CITY OF LAS VEGAS).
- REGRADE TO GAIN POSITIVE DRAINAGE (IRRIGATION AND LANDSCAPE REPAIR) REFER TO GENERAL NOTES #7 DWG. C2.
- CONSTRUCT CONCRETE DRIVEWAY TRANSITION (MATCH EXISTING THICKNESS - 4" MIN., AND EXISTING WIDTH).
- INSTALL 3" INTERCONNECT CONDUIT PER USD DWG. #404.1419
- REMOVE & REPLACE LVWD METER BOX & ADJUST SERVICE CONNECTION AS NEEDED PER UDACS STD. PLATE #18.
- CONSTRUCT STRUCTURAL SECTION PER DETAIL "E" DWG. C9.
- CONSTRUCT GEGRID LAP PER DETAIL "D" DWG. C9.
- INSTALL No. 7 PULLBOX PER USD DWG. #326 AND #328.

NOTE:
THE "D" STREET CENTERLINE IS REFERENCED FROM THE CONSTRUCTION CONTROL LINE. SEE SURVEY CONTROL PLAN, SHEET C4, DETAIL "A", FOR CONSTRUCTION CONTROL LINE RELATIONSHIP TO "D" STREET CENTERLINE.

CURVE DATA

No.	RADIUS	DELTA	LENGTH	TANGENT	BACK OF CURB
C1	20.00'	90°00'00"	31.42'	20.00'	
C2	20.00'	90°00'00"	31.42'	20.00'	
C3	15.00'	90°00'00"	23.56'	15.00'	
C4	15.00'	90°00'00"	23.56'	15.00'	

APPROVED FOR CONSTRUCTION
Amirul Hossain
LWWD
DATE: 9-12-08



REVISIONS

NO.	DATE	DESCRIPTION	APP'D

Department of Public Works

ENGINEERING DESIGN SECTION
CITY ENGINEER: CHARLES KADORSKY, P.E.
PROJECT MANAGER: WAYNE HORLACHER
DESIGNED BY: LSR
DRAWN BY: LSR/AHU
CHECKED BY: MW
DATE: SEPTEMBER 12, 2008

WEST LAS VEGAS ROADWAY IMPROVEMENTS PHASE 7

"D" STREET PLAN AND PROFILE
STA 10+00.00 TO STA 14+09.11

PROFESSIONAL ENGINEER - STATE OF NEVADA
WAYNE HORLACHER
No. 10739

SHEET: **C5**
5 of 12
DRAWING NO. 107-V3158
BID#: 01.1730.23