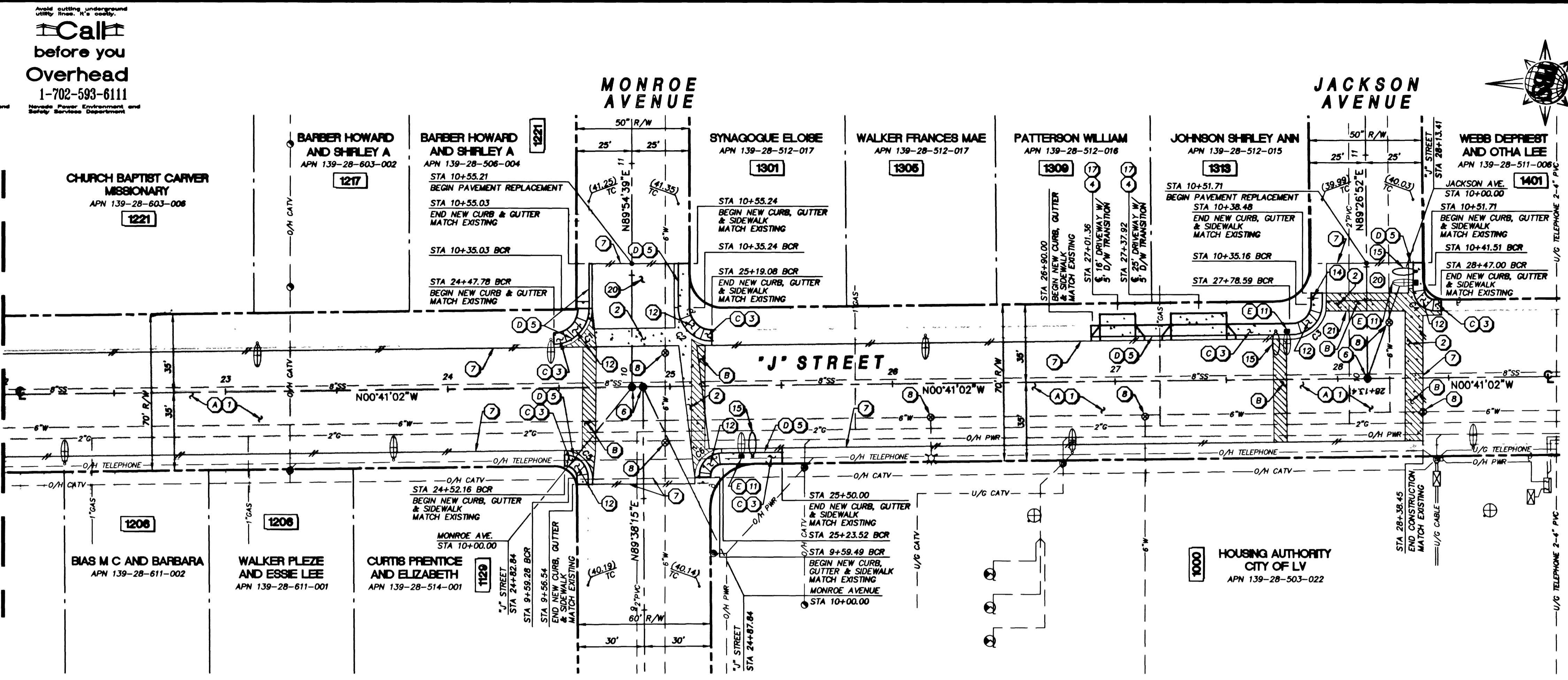


Call before you Dig
1-800-227-2600

Call before you Overhead
1-702-593-6111

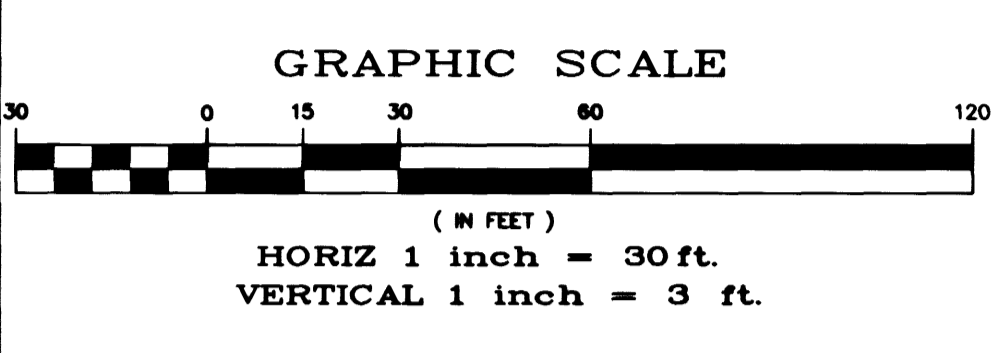
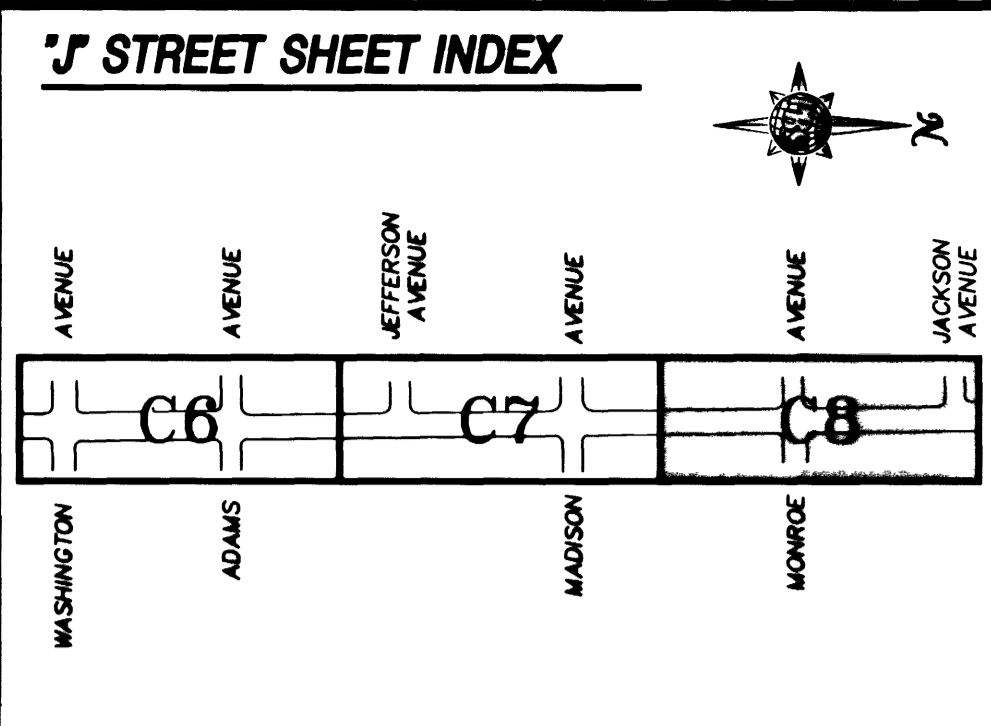
MATCHLINE SEE DRAWING C7
STA 22+00.00



CURVE DATA

NO.	RADIUS	DELTA	LENGTH	TANGENT	BACK OF CURB
C1	16.00'	89°29'11"	24.99'	15.86'	
C2	15.00'	90°38'47"	23.73'	15.17'	
C3	13.50'	89°23'51"	21.06'	13.36'	
C4	10.00'	90°38'41"	15.82'	10.11'	
C5	10.00'	96°26'20"	16.83'	-	
C6	10.00'	89°15'53"	15.58'	9.87'	

APPROVED FOR CONSTRUCTION
[Signature] First Approval 9/21/00
 DATE 9/21/00
 LVWD



BASIS OF BEARING
 S89°52'47"W - CENTERLINE OF WASHINGTON AVE. AS SHOWN ON FINAL MAP BOOK 5, PAGE 20 (BONANZA TERRACE)

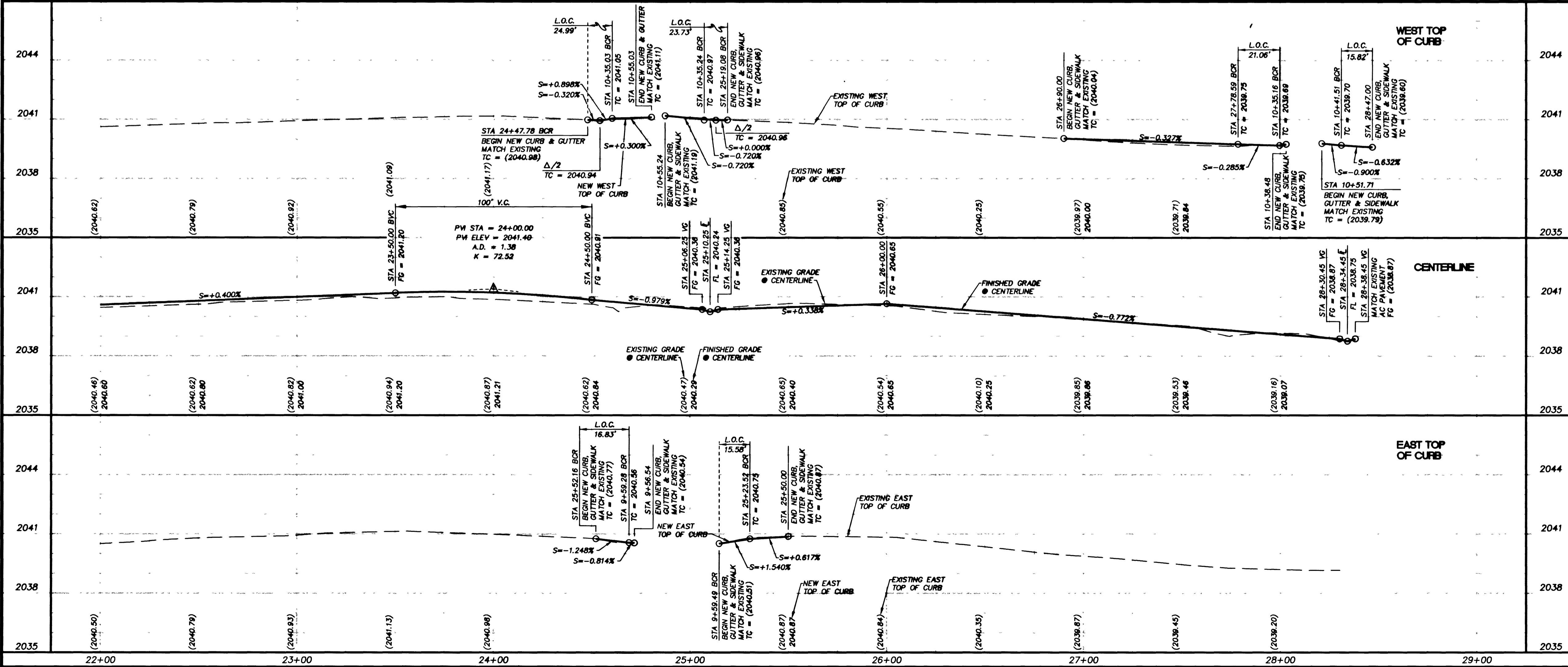
BENCHMARK
 ELEVATIONS ARE BASED ON THE FOLLOWING CLV BENCHMARK:

STATION	NAVD 88 ELEVATION (ft.)	LOCATION
2LV01 28E	2040.2131	BM #51 FD. RIVET & PLATE IN TC. NW RETURN WASHINGTON

CAUTION: 10" STREET & "J" STREET EXISTING UTILITIES ARE LOCATED ON THE PLANS FROM A SEARCH OF AVAILABLE RECORDS. CONTRACTOR TO VERIFY LOCATIONS AND DEPTHS PRIOR TO CONSTRUCTION.

- KEY NOTES**
- REMOVAL ITEMS:**
- (A) REMOVE EXISTING AC PAVEMENT.
 - (B) REMOVE EXISTING VALLEY GUTTER.
 - (C) REMOVE EXISTING SIDEWALK AND RESIDENTIAL DRIVEWAY.
 - (D) REMOVE EXISTING 'L' TYPE CURB AND GUTTER.
 - (E) REMOVE EXISTING STREETLIGHT AND FOUNDATION.

- CONSTRUCTION ITEMS:**
- (1) CONSTRUCT STRUCTURAL SECTION PER TYPICAL SECTIONS, SEE DWG. C3.
 - (2) CONSTRUCT 8" VALLEY GUTTER PER USD DWG. #228 & DETAIL "C", DWG. C9.
 - (3) CONSTRUCT 5" SIDEWALK PER USD DWG. #234.
 - (4) CONSTRUCT RESIDENTIAL DRIVEWAY PER USD DWG. #223.
 - (5) CONSTRUCT 'L' TYPE CURB AND GUTTER PER USD DWG. #216.
 - (6) SET TYPE III MONUMENT PER USD DWG. #241.
 - (7) SAW CUT & MATCH EXISTING.
 - (8) ADJUST EXISTING VALVE BOX TO FG PER UDACS PLATE #8.
 - (9) ADJUST MANHOLE RING TO FG PER USD DWG. #408.
 - (10) REMOVE & REPLACE WITH NEW No. 3 1/2 PULLBOX PER USD DWG. #326 AND #328.
 - (11) INSTALL No. 3 1/2 PULLBOX AND REWIRE PER DETAIL "B" DWG. C9.
 - (12) CONSTRUCT SIDEWALK RAMP PER USD DWG. #235, CASE 1.
 - (13) CONSTRUCTION EASEMENT AS NOTED.
 - (14) REMOVE AND RESET EXISTING SIGN AND NEW POST.
 - (15) CONSTRUCT STREETLIGHT FOUNDATION PER USD DWG. #321 (STREETLIGHT AND WIRE TO BE INSTALLED BY CITY OF LAS VEGAS).
 - (16) REGRADE TO GAIN POSITIVE DRAINAGE (IRRIGATION AND LANDSCAPE REPAIR) REFER TO GENERAL NOTES #7 DWG. C2.
 - (17) CONSTRUCT CONCRETE DRIVEWAY TRANSITION (MATCH EXISTING THICKNESS - 4" MIN., AND EXISTING WIDTH).
 - (18) INSTALL 3" INTERCONNECT CONDUIT PER USD DWG. #404.1419
 - (19) REMOVE & REPLACE LVWD METER BOX & ADJUST SERVICE CONNECTION AS NEEDED PER UDACS STD. PLATE #18.
 - (20) CONSTRUCT STRUCTURAL SECTION PER DETAIL "E" DWG. C9.
 - (21) CONSTRUCT GEGRID LAP PER DETAIL "D" DWG. C9.
 - (22) INSTALL No. 7 PULLBOX PER USD DWG. #326 AND #328.



Department of Public Works

WEST LAS VEGAS ROADWAY IMPROVEMENTS PHASE 7

"J" STREET PLAN AND PROFILE
STA. 22+00.00 TO STA. 28+38.45

REVISIONS

NO.	DATE	DESCRIPTION	APP'D

ENGINEERING DESIGN SECTION
 CITY ENGINEER: CHARLES KAJONSKY, JR., P.E.
 PROJECT MANAGER: WAYNE HURLACHER
 DESIGNED BY: LSI
 DRAWN BY: LSI/WHU
 CHECKED BY: WH
 DATE: SEPTEMBER 12, 2000

901 N. Green Valley Pkwy., Suite 100, Nevada, 89014
 Telephone: 702/263-7275
 Fax: 702/263-7200

ENGINEERING - PLANNING - SURVEYING - CONSTRUCTION SERVICES

SHEET: **C8**
 8 of 12
 DRAWING NO. 107-V3158
 BID#:01.1730.23

24325