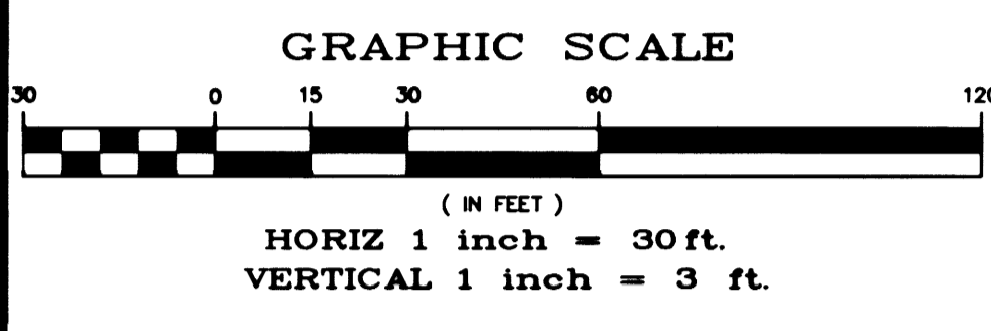
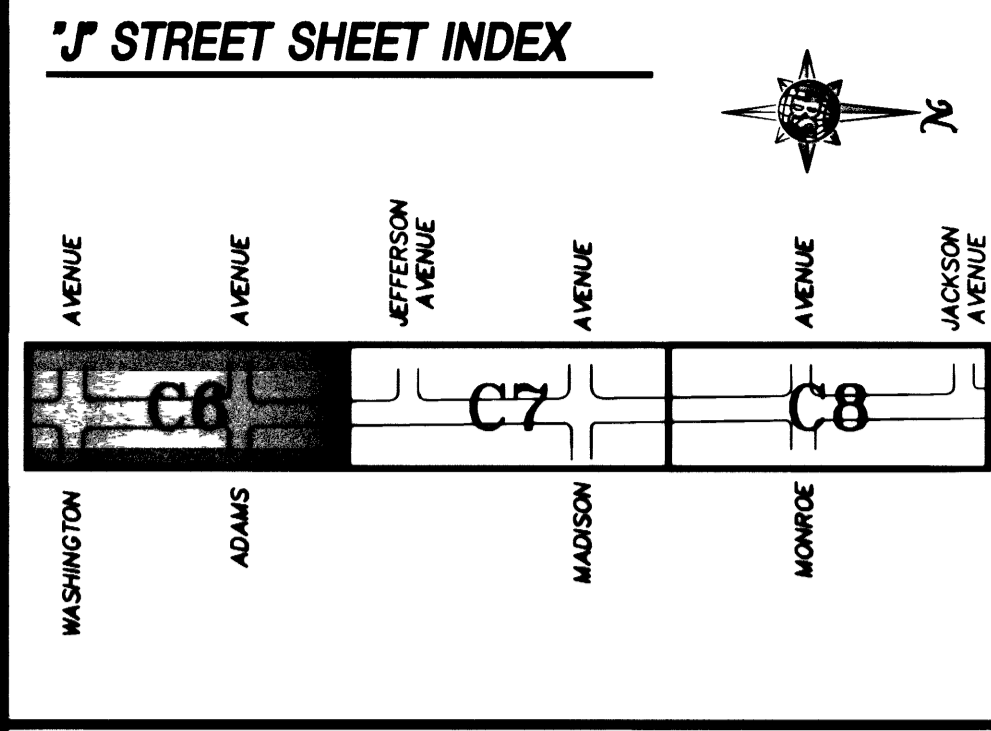
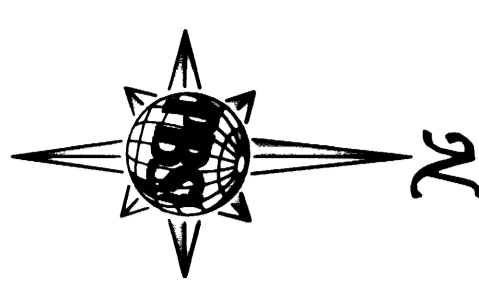
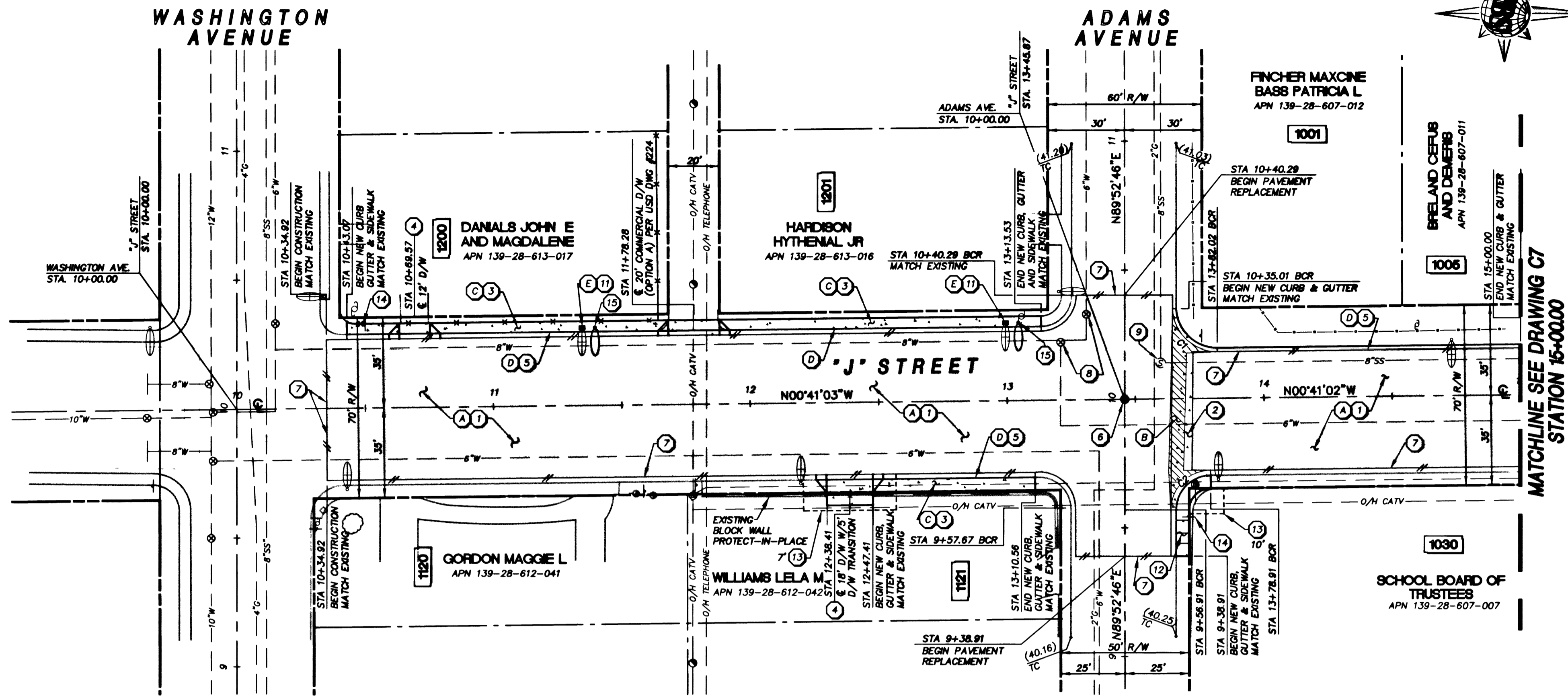


Call before you dig
1-800-227-2600

Call before you Overhead
1-702-593-6111



BASIS OF BEARING
S89°52'47"W - CENTERLINE OF WASHINGTON AVE. AS SHOWN ON FINAL MAP BOOK 5, PAGE 20 (BOHANZA TERRACE)

BENCHMARK
ELEVATIONS ARE BASED ON THE FOLLOWING CLV BENCHMARK:

STATION	NAVD 88 ELEVATION (RL)	LOCATION
2LV01 28E	2040.2131	BM #51 FD. RIVET & PLATE IN TC. NW RETURN WASHINGTON

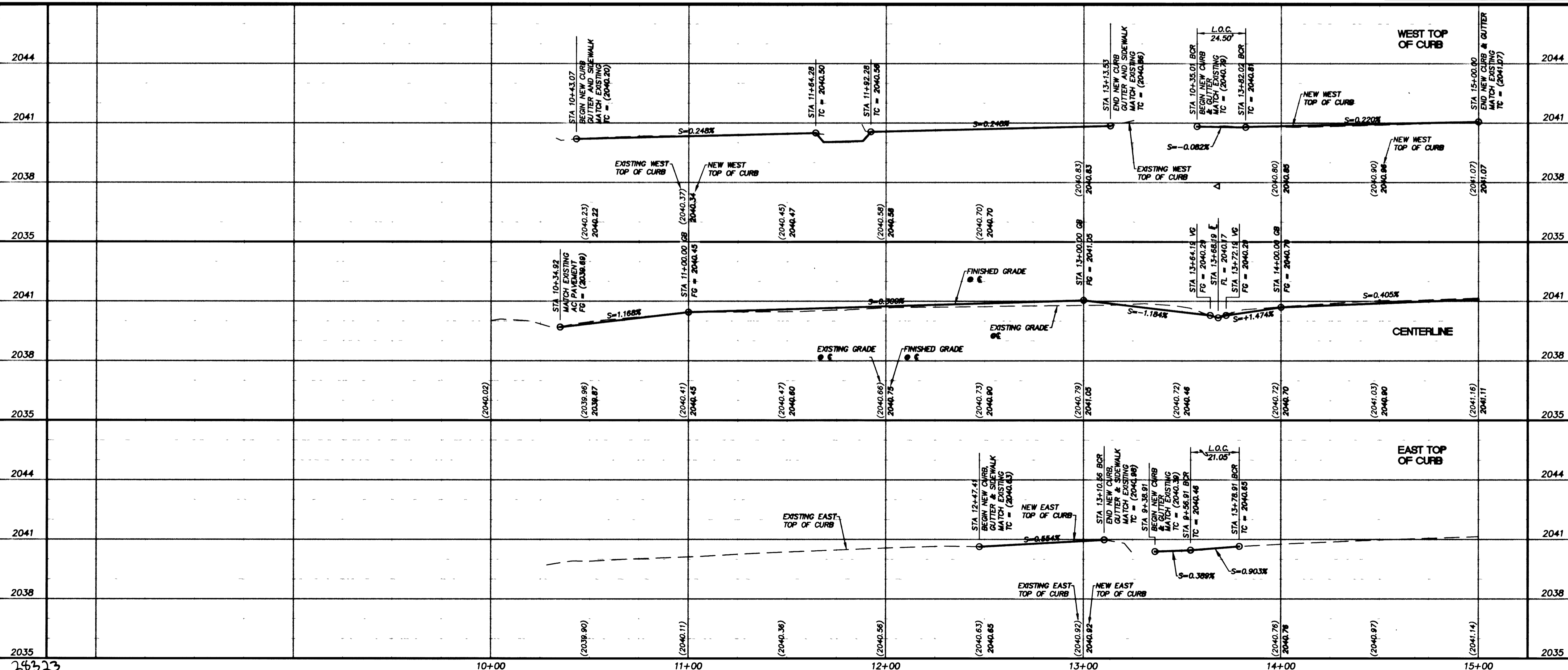
CAUTION: "D" STREET & "J" STREET EXISTING UTILITIES ARE LOCATED ON THE PLANS FROM A SEARCH OF AVAILABLE RECORDS. CONTRACTOR TO VERIFY LOCATIONS AND DEPTHS PRIOR TO CONSTRUCTION.

APPROVED FOR CONSTRUCTION

Wynn Hoff
LWWD DATE 9-12-08

CURVE DATA

No.	RADIUS	DELTA	LENGTH	TANGENT	BACK OF CURB
C1	16.00'	87°44'57"	24.50'	15.38'	
C2	13.50'	89°20'26"	21.05'	13.35'	



- KEY NOTES**
- REMOVAL ITEMS**
- (A) REMOVE EXISTING AC PAVEMENT.
 - (B) REMOVE EXISTING VALLEY GUTTER.
 - (C) REMOVE EXISTING SIDEWALK AND RESIDENTIAL DRIVEWAY.
 - (D) REMOVE EXISTING 'L' TYPE CURB AND GUTTER.
 - (E) REMOVE EXISTING STREETLIGHT AND FOUNDATION.
- CONSTRUCTION ITEMS**
- (1) CONSTRUCT STRUCTURAL SECTION PER TYPICAL SECTIONS. SEE DWG. C3.
 - (2) CONSTRUCT 'B' VALLEY GUTTER PER USD DWG. #228 & DETAIL "C", DWG. C9.
 - (3) CONSTRUCT 'S' SIDEWALK PER USD DWG. #234.
 - (4) CONSTRUCT RESIDENTIAL DRIVEWAY PER USD DWG. #223.
 - (5) CONSTRUCT 'L' TYPE CURB AND GUTTER PER USD DWG. #216.
 - (6) SET TYPE III MONUMENT PER USD DWG. #241.
 - (7) SAW CUT & MATCH EXISTING.
 - (8) ADJUST EXISTING VALVE BOX TO FG PER UDACS PLATE #8.
 - (9) ADJUST MANHOLE RING TO FG PER USD DWG. #408.
 - (10) REMOVE & REPLACE WITH NEW No. 3 1/2 PULLBOX PER USD DWG. #326 AND #328.
 - (11) INSTALL No. 3 1/2 PULLBOX AND REPELL WIRE PER DETAIL "B" DWG. C9.
 - (12) CONSTRUCT SIDEWALK RAMP PER USD DWG. #235, CASE 1.
 - (13) CONSTRUCTION EASEMENT AS NOTED.
 - (14) REMOVE AND RESET EXISTING SIGN AND NEW POST.
 - (15) CONSTRUCT STREETLIGHT FOUNDATION PER USD DWG. #321 (STREETLIGHT AND WIRE TO BE INSTALLED BY CITY OF LAS VEGAS).
 - (16) REGRADE TO GAIN POSITIVE DRAINAGE (IRRIGATION AND LANDSCAPE REPAIR) REFER TO GENERAL NOTES #7 DWG. C2.
 - (17) CONSTRUCT CONCRETE DRIVEWAY TRANSITION (MATCH EXISTING THICKNESS - 4" MIN., AND EXISTING WIDTH).
 - (18) INSTALL 3" INTERCONNECT CONDUIT PER USD DWG. #404.1419
 - (19) REMOVE & REPLACE LVWD METER BOX & ADJUST SERVICE CONNECTION AS NEEDED PER UDACS STD. PLATE #18.
 - (20) CONSTRUCT STRUCTURAL SECTION PER DETAIL "E" DWG. C9.
 - (21) CONSTRUCT GEORIG LAP PER DETAIL "D" DWG. C9.
 - (22) INSTALL No. 7 PULLBOX PER USD DWG. #326 AND #328.

Department of Public Works

ENGINEERING DESIGN SECTION
CITY ENGINEER: CHARLES MAKOWSKI, JR. P.E.
PROJECT MANAGER: WYNNE HURLACHER
DESIGNED BY: LSR
DRAWN BY: LSR/AMU
CHECKED BY: WH
DATE: SEPTEMBER 12, 2008

901 N. Green Valley Pkwy., Suite 100, North Las Vegas, NV 89148
Telephone: 702/263-7275
Fax: 702/263-7200

WEST LAS VEGAS ROADWAY IMPROVEMENTS PHASE 7
"J" STREET PLAN AND PROFILE
STA 10+00.00 TO STA 15+00.00

PROFESSIONAL ENGINEER - STATE OF NEVADA
WYNNE HURLACHER
No. 10,739

SHEET: C6
6 of 12
DRAWING NO. 107-V3158
BID#: 01.1730.23

REVISIONS

NO.	DATE	DESCRIPTION	APPROVED