

DISCLAIMER NOTE:
 UTILITY LOCATIONS SHOWN HEREON ARE APPROXIMATE ONLY. IT SHALL BE THE CONTRACTOR'S RESPONSIBILITY TO DETERMINE THE EXACT HORIZONTAL AND VERTICAL LOCATION OF ALL EXISTING UNDERGROUND OR OVERHEAD UTILITIES PRIOR TO COMMENCING CONSTRUCTION. NO REPRESENTATION IS MADE THAT ALL EXISTING UTILITIES ARE SHOWN HEREON. THE ENGINEER ASSUMES NO RESPONSIBILITY FOR UTILITIES NOT SHOWN OR UTILITIES NOT SHOWN IN THEIR PROPER LOCATION. CONTRACTOR TO NOTIFY ENGINEER OF ANY CHANGES OR DISCREPANCIES.

Call before you dig
 Avoid overhead power line contact. It's costly.
 Call before you dig
 1-702-227-2929
 Nevada Power
 Environment and Safety
 Services Department

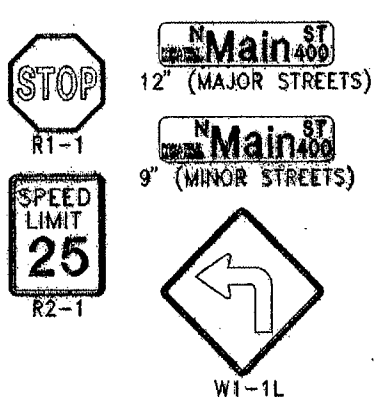
Call before you dig
 Avoid calling underground utilities. It's costly.
 Call before you dig
 1-800-227-2600
 CLARK COUNTY PUBLIC OPERATIONS
 CLARK COUNTY RECORDER'S OFFICE IN FILE 27 OF PARCEL MAPS, AT PAGE 94.

BENCHMARK
 CITY OF LAS VEGAS BENCHMARK 6LV99 13W6
 RIVET & PLATE TOP CURB NE CORNER SHAUMBER ROAD (LANSFORD ST.) AND FARM ROAD.
 ELEVATION=915.895 METERS
 ELEVATION=3008.24 U.S. SURVEY FEET
 NAVD'83 CITY OF LAS VEGAS 2008 VERTICAL ADJUSTMENT

BASIS OF BEARINGS
 NORTH 88°47'20" EAST BEING THE BEARING OF THE NORTH LINE OF THE NORTHEAST QUARTER (NE 1/4) OF THE NORTHWEST QUARTER (NW 1/4) OF SECTION 12, TOWNSHIP 21 SOUTH, RANGE 80 EAST, N.D.M., CLARK COUNTY, NEVADA, AS SHOWN ON THAT CERTAIN MAP ON FILE IN THE CLARK COUNTY RECORDER'S OFFICE IN FILE 27 OF PARCEL MAPS, AT PAGE 94.

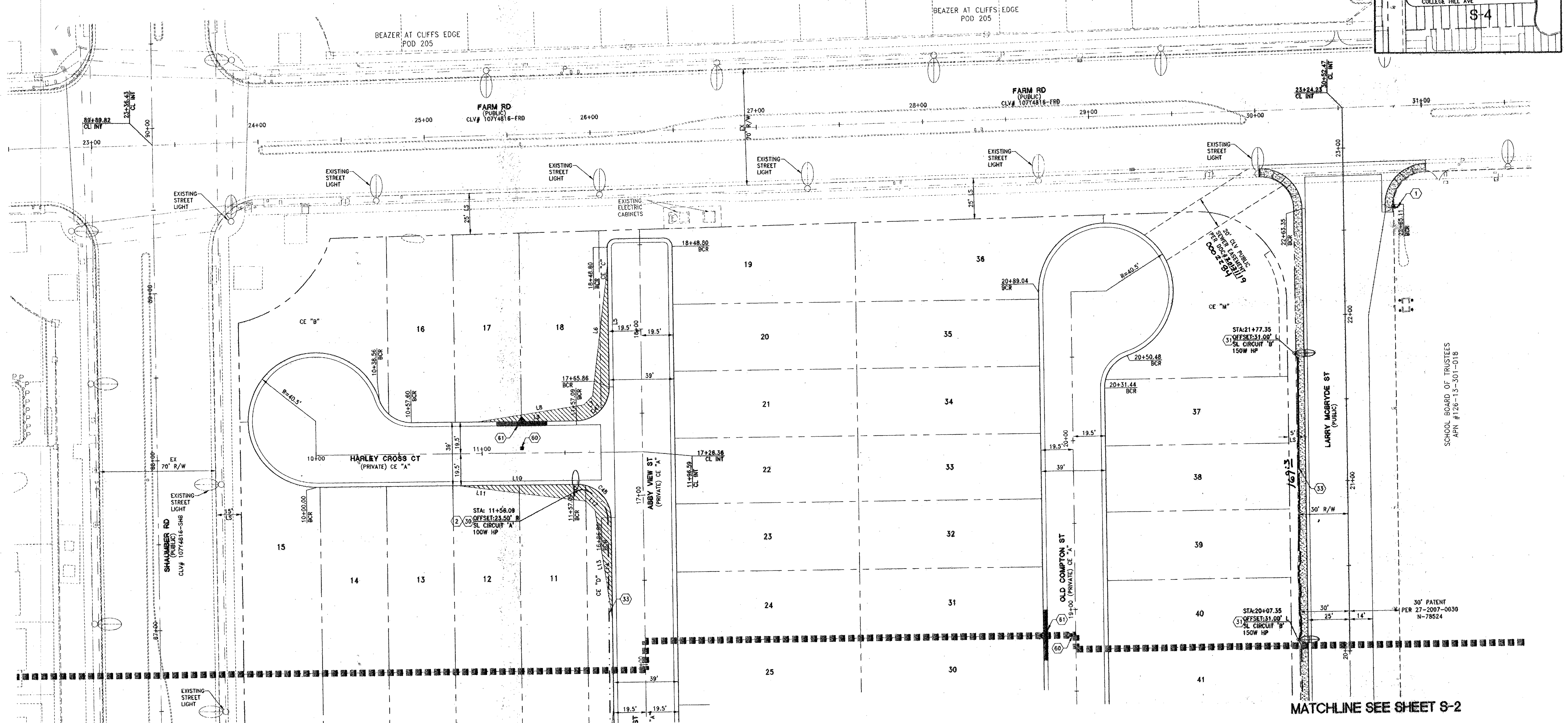
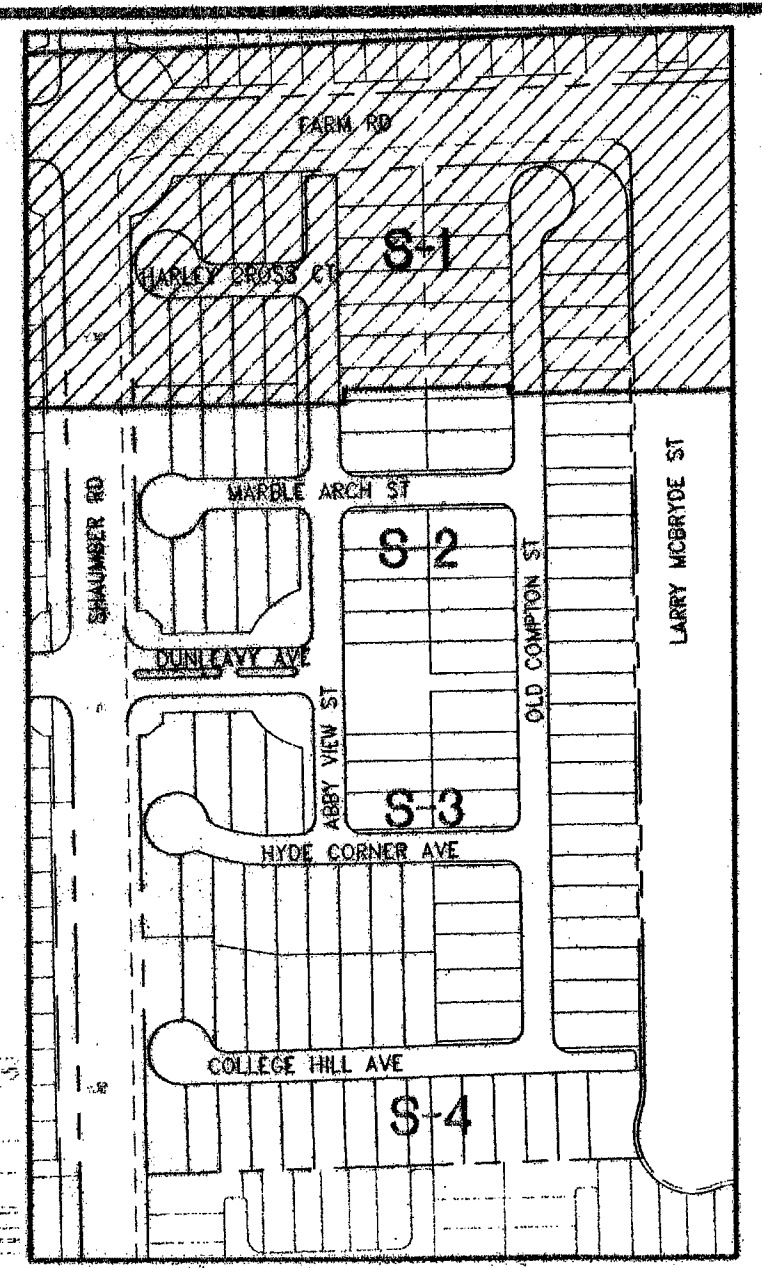
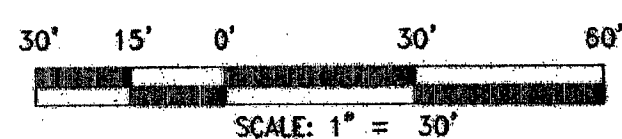
STREETLIGHT AND SVZ NOTE
 REFER TO SHEET S-3 FOR PUBLIC STREETLIGHT CIRCUIT CAPACITY VERIFICATION TABLES AND SVZ LINE AND CURVE TABLES.

- TRAFFIC CONSTRUCTION NOTES**
- SIGNS**
- 1 - INSTALL 1'-36" R1-1 STOP SIGN AND 2'-12" STREET NAME SIGNS (PRIVATE STREET SIGNS WITH "PRIVATELY MAINTAINED" TO BE WHITE LETTERS ON BROWN BACKGROUND)
 - 2 - INSTALL 1'-30" R1-1 STOP SIGN AND 2'-9" STREET NAME SIGNS (PRIVATE STREET SIGNS WITH "PRIVATELY MAINTAINED" TO BE WHITE LETTERS ON BROWN BACKGROUND)
 - 3 - INSTALL R2-1 SPEED LIMITS SIGN POSTED "SPEED LIMIT 25"
 - 4 - INSTALL W1-1L LEFT TURN SIGN
- STREETLIGHTS**
- 50 - INSTALL 100 HPS STREET LIGHT PER CLIFF'S EDGE DESIGN GUIDELINES SECTION 5 DETAIL 5-16 AND 5-17
 - 51 - INSTALL 150 HPS STREET LIGHT PER CCAUSD No. 314, 320, AND 321
 - 52 - INSTALL PRIVATE 125 AMP WALL MOUNTED SERVICE PEDESTAL
 - 53 - INSTALL 1-1/4" PVC STREETLIGHT CONDUIT WITH 2-NO. 4 AND 1-NO. 8 GND THW
 - 54 - INSTALL No. 3 1/2 PULL BOX PER CCAUSD No. 326
 - 55 - REMOVE CAP AND CONNECT TO EXISTING 1 1/4" PVC STREETLIGHT CONDUIT. INSTALL 2-NO. 4 AND 8 GND THW IN EXISTING STREETLIGHT CONDUIT.
- PAVEMENT MARKINGS AND MISCELLANEOUS**
- 60 - INSTALL BLUE COLORED REFLECTIVE RAISED PAVEMENT MARKERS ADJACENT TO THE FIRE HYDRANT ON ALL IMPROVED FIRE APPARATUS ACCESS ROADWAYS WITH HARD SURFACE, INCLUDING BOTH PUBLIC AND PRIVATE ROADS, OR FIRE LANES
 - 61 - PAINT CURB RED IN FRONT OF FIRE HYDRANT
 - 62 - PAINT CURB RED IN FRONT OF FIRE DEPT EMERGENCY ACCESS



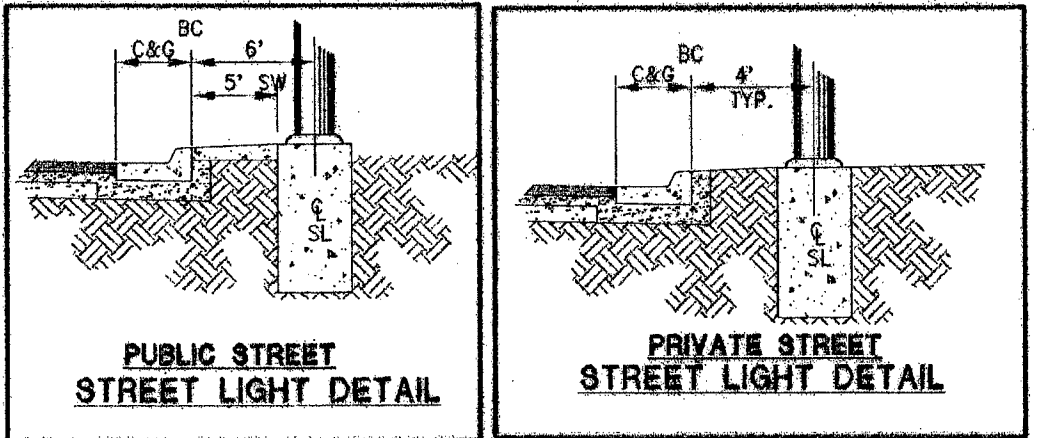
ASBUILT

WESTERN STATES CONTRACTING, INC.
 4129 W. CHEYENNE AVE. SUITE B
 N. LAS VEGAS, NV 89032



MATCHLINE SEE SHEET S-2

MATCHLINE SEE SHEET S-2



DATE	BY	APP'D	DATE
02/24/2013			

REV	DESCRIPTION

DATE: 02/24/2013	SCALE: 1"=30'	DRAWN BY: N/A	DESIGNED BY: AW	CHECKED BY: CRZ	APPROVED BY: CRZ	PROJECT #: 30403032
HORIZ. SCALE: 1"=30'	VERT. SCALE: N/A					

LENNAR
 2400 PARKSIDE BLVD. SUITE 200, LAS VEGAS, NV 89074
 PHONE: (702) 796-9200 FAX: (702) 796-6200

RCI
 ENGINEERING
 3221 SOUTH HIGHLAND PARK, SUITE 210, LAS VEGAS, NV 89109
 PHONE: (702) 452-0800 FAX: (702) 452-0801

IMPROVEMENT PLANS FOR
**WEST END (AKA FARM AND SHAUMBER)
 CLIFFS EDGE POD 208**
 STREET LIGHT, SIGNAGE AND STRIPING PLAN
 (SHEET 1 OF 4)

NEVADA
 CITY OF LAS VEGAS
 10/29/13 7:48pm
 CLV PROJECT NUMBER # 50964

PROFESSIONAL ENGINEER
 CHRISTOPHER R. ZBINNY
 Exp. 6/30/2014
 No. 13976
 CIVIL
 10-29-13
 DRAWING
S-1
 SHIT 37 OF 40
 CLV DRAWING NUMBER
 14850965
 10244285