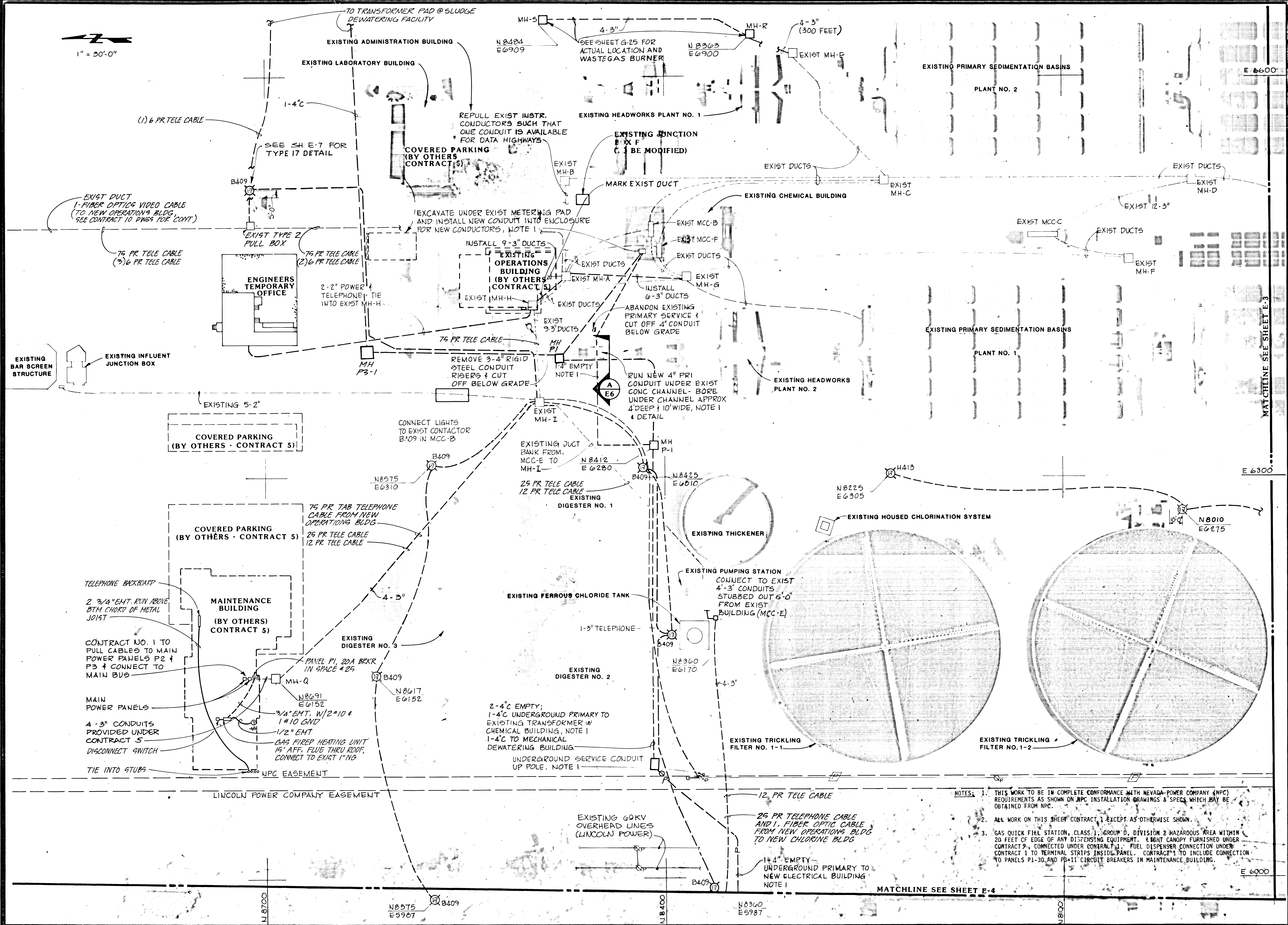
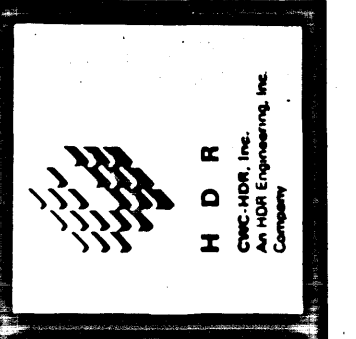
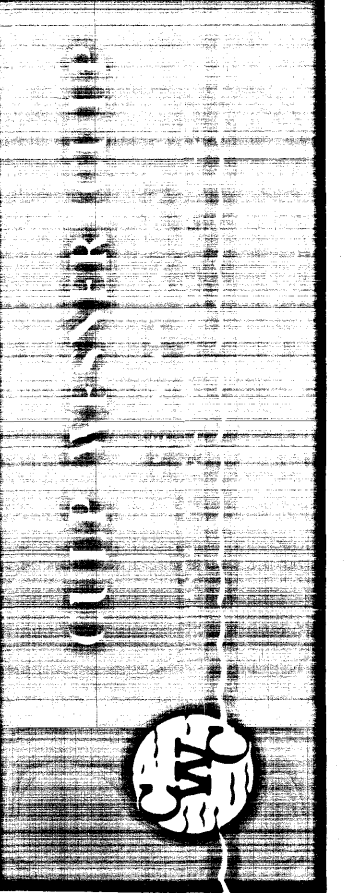


1" = 30'-0"



- NOTES:
1. THIS WORK TO BE IN COMPLETE CONFORMANCE WITH NEVADA-POWER COMPANY (NPC) REQUIREMENTS AS SHOWN ON NPC INSTALLATION DRAWINGS & SPECS WHICH MAY BE OBTAINED FROM NPC.
 2. ALL WORK ON THIS SHEET CONTRACT 1 EXCEPT AS OTHERWISE SHOWN.
 3. GAS QUICK FILL STATION, CLASS 1, GROUP D, DIVISION 2 HAZARDOUS AREA WITHIN 20 FEET OF EDGE OF ANY DISPENSING EQUIPMENT. LIGHT CANOPY FURNISHED UNDER CONTRACT 9, CONNECTED UNDER CONTRACT 1. FUEL DISPENSER CONNECTION UNDER CONTRACT 1 TO TERMINAL STRIPS INSIDE PANEL. CONTRACT 1 TO INCLUDE CONNECTION TO PANELS P1-30 AND PB-11 CIRCUIT BREAKERS IN MAINTENANCE BUILDING.



Job No. 740.11	Date
Designed WFE	
Drawn JDB	
Checked DJR	
Approved DAD	
Date 12/19/88	

Rev. No.	By	Date	Description
1	WFE	12/19/88	DESIGNED
2	JDB	1/10/89	DRAWN
3	DJR	1/10/89	CHECKED
4	DAD	1/10/89	APPROVED

City of Las Vegas
 WASTEWATER TREATMENT PLANT
 Main Plant Expansion
 Contract No. 1

ELECTRICAL
 SITE PLAN - 1

Sheet 148
E-2
 of 164

6-1-148 311.21