

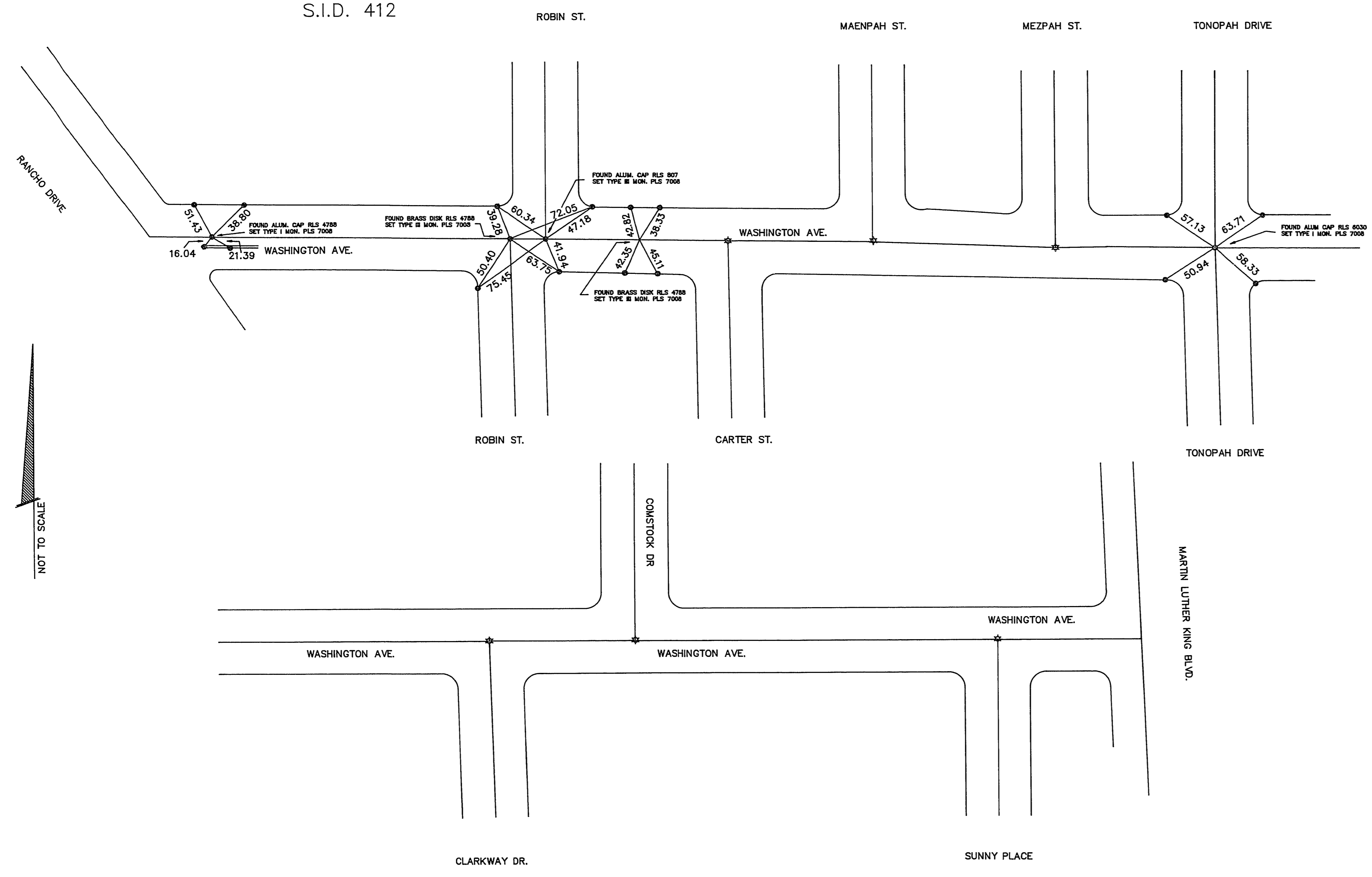
MONUMENTATION MAP FOR WASHINGTON AVE.

S.I.D. 412

SURVEYOR'S CERTIFICATE

I, GERALD L. WIRTHLIN, A PROFESSIONAL LAND SURVEYOR IN THE STATE OF NEVADA, DO HEREBY CERTIFY THAT THE MONUMENTS HAVE BEEN SET AND THE TIE DISTANCES ESTABLISHED AS SHOWN HEREON. THIS SURVEY WAS COMPLETED ON JUNE 30, 1992.

GERALD L. WIRTHLIN
PROFESSIONAL LAND SURVEYOR
NEVADA CERTIFICATE No. 7008



NOT TO SCALE

LEGEND

- SET BRASS CAP TOP CURB R.M.
- SET MONUMENT AS INDICATED
- ☆ MONUMENT NOT FOUND OR SET
- CENTERLINE
- BOUNDARY LINE
- TIE DIMENSION

MONUMENTATION / TIE MAP
WASHINGTON ST IMPROVEMENTS- RANCHO/MLK BLVD.

CLARK COUNTY, NEVADA

LAS VEGAS PAVING CORP.

ENGINEERING DEPT.
4420 S. DECATUR BLVD.
LAS VEGAS, NEVADA 89103
(702) 251-5800

Ties for 107-V1772
20-3-91