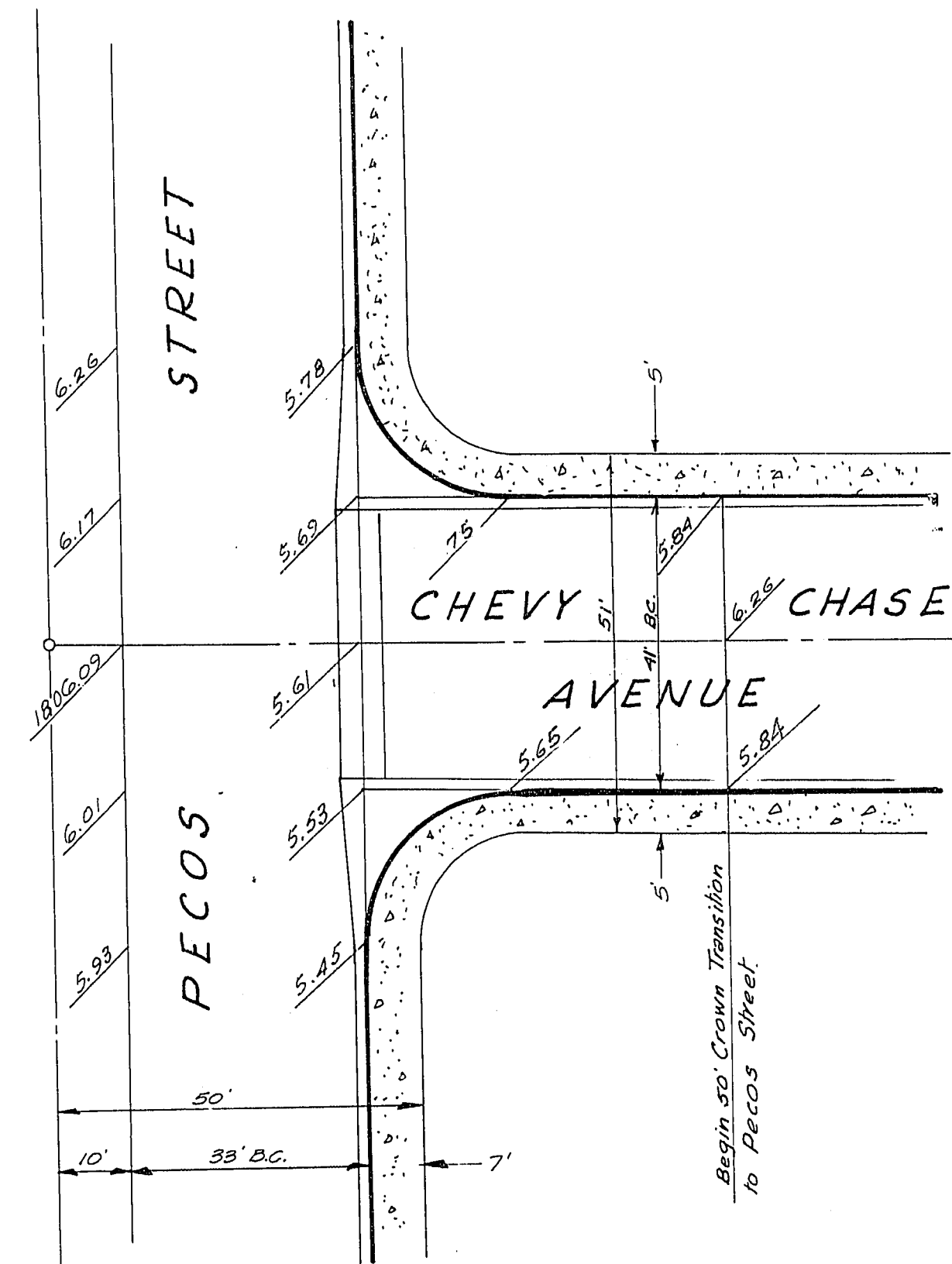
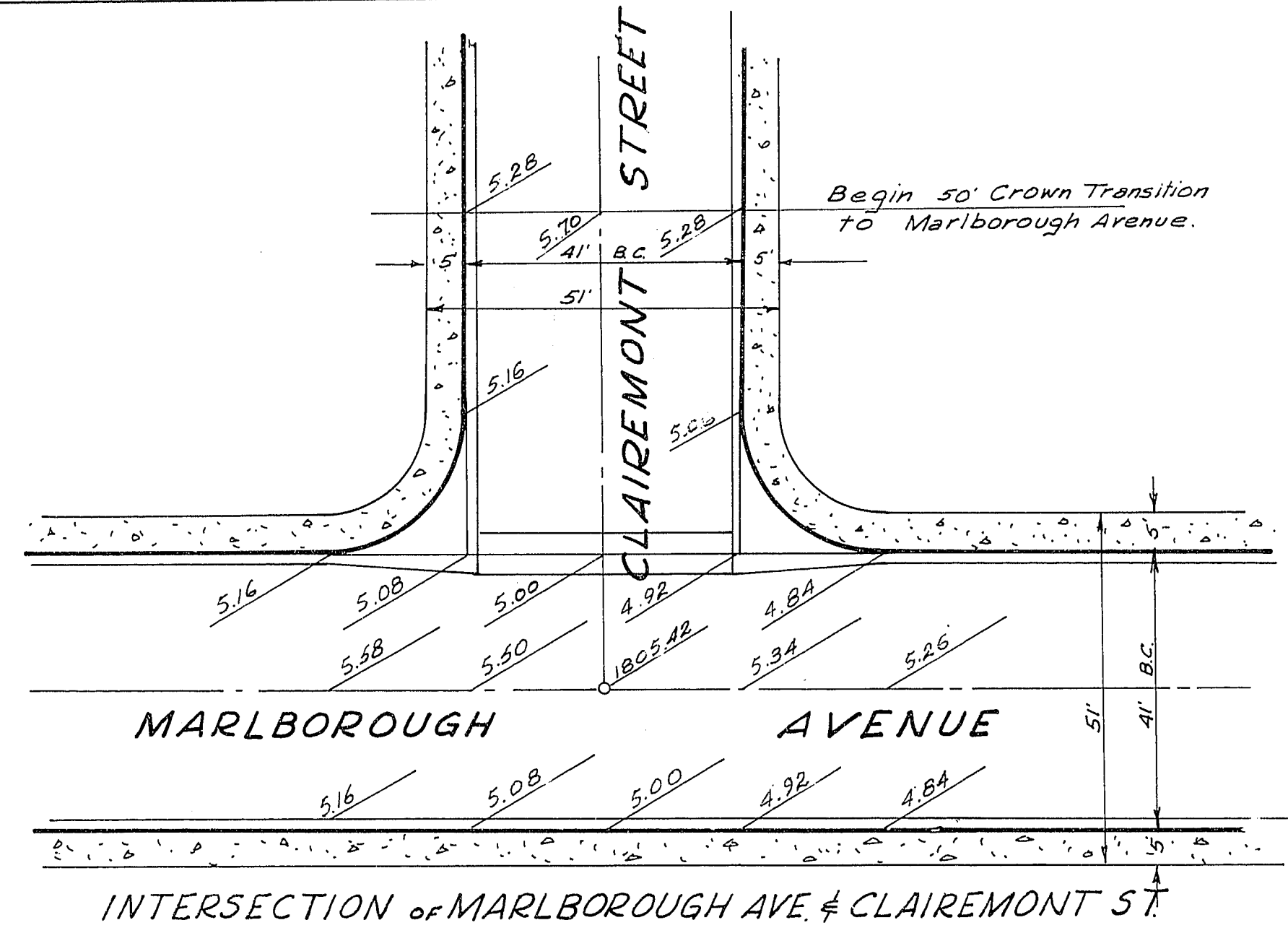


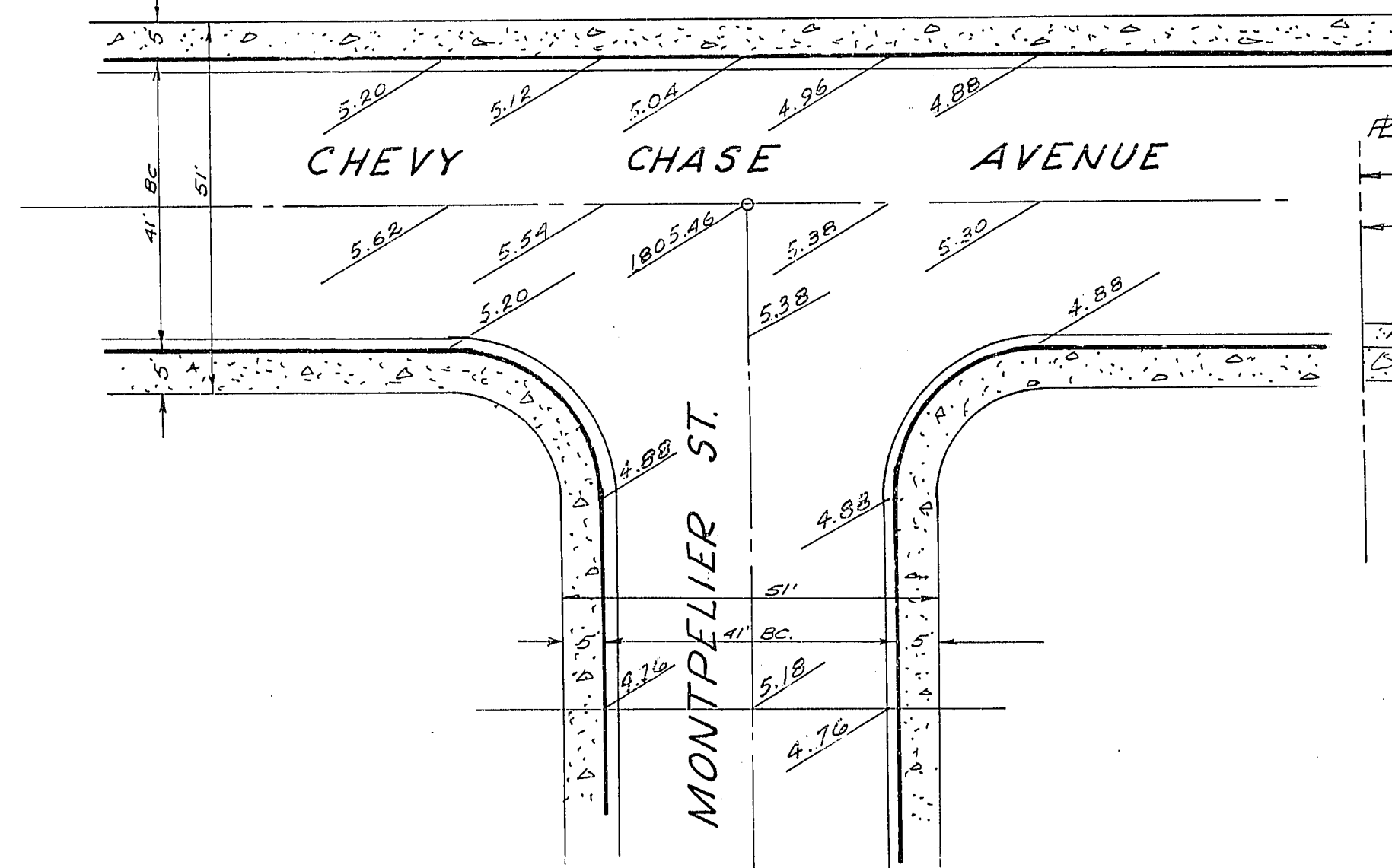
INTERSECTION of PECOS ST & MARLBOROUGH AVE



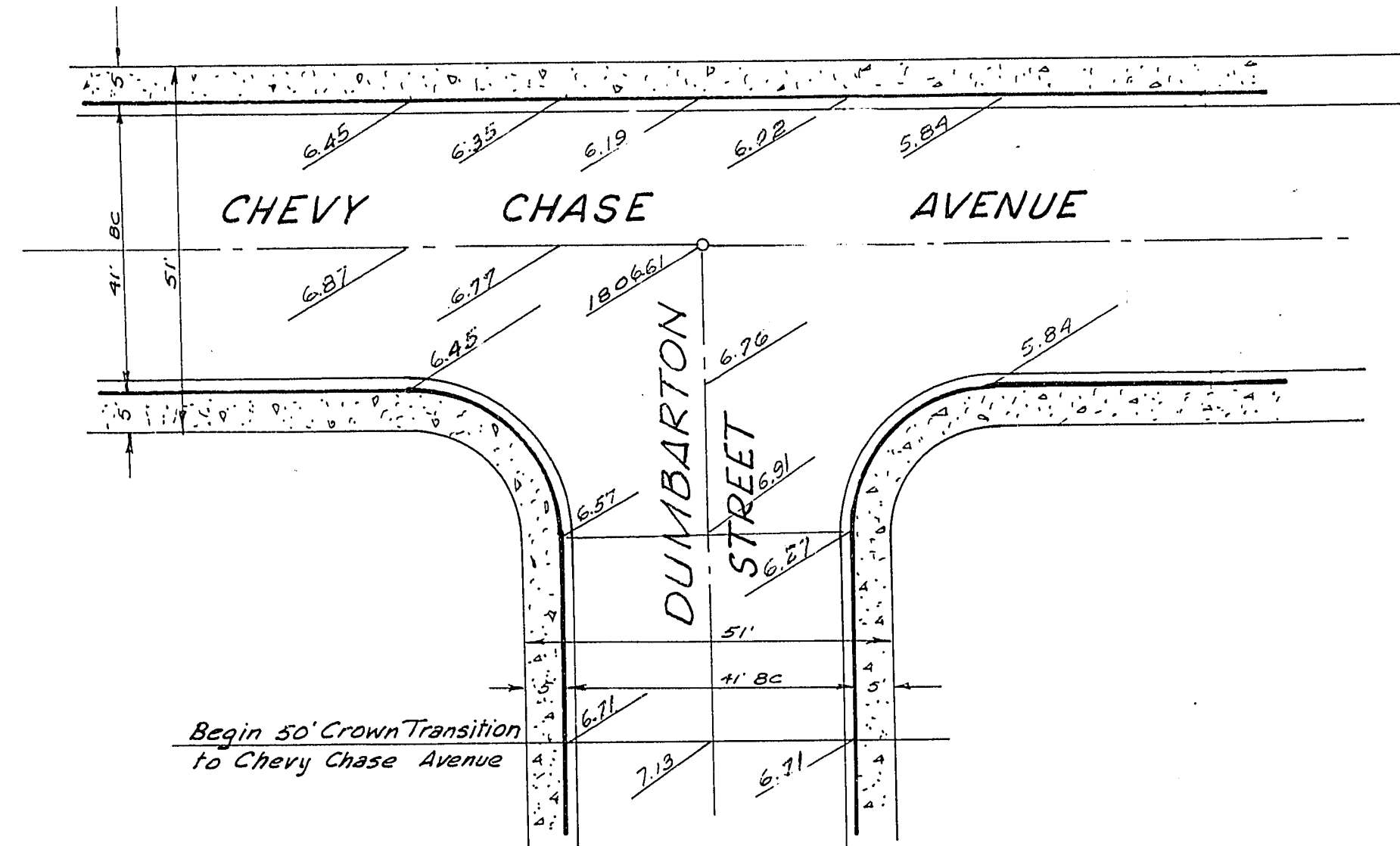
INTERSECTION of PECOS ST & CHEVY CHASE AVE.



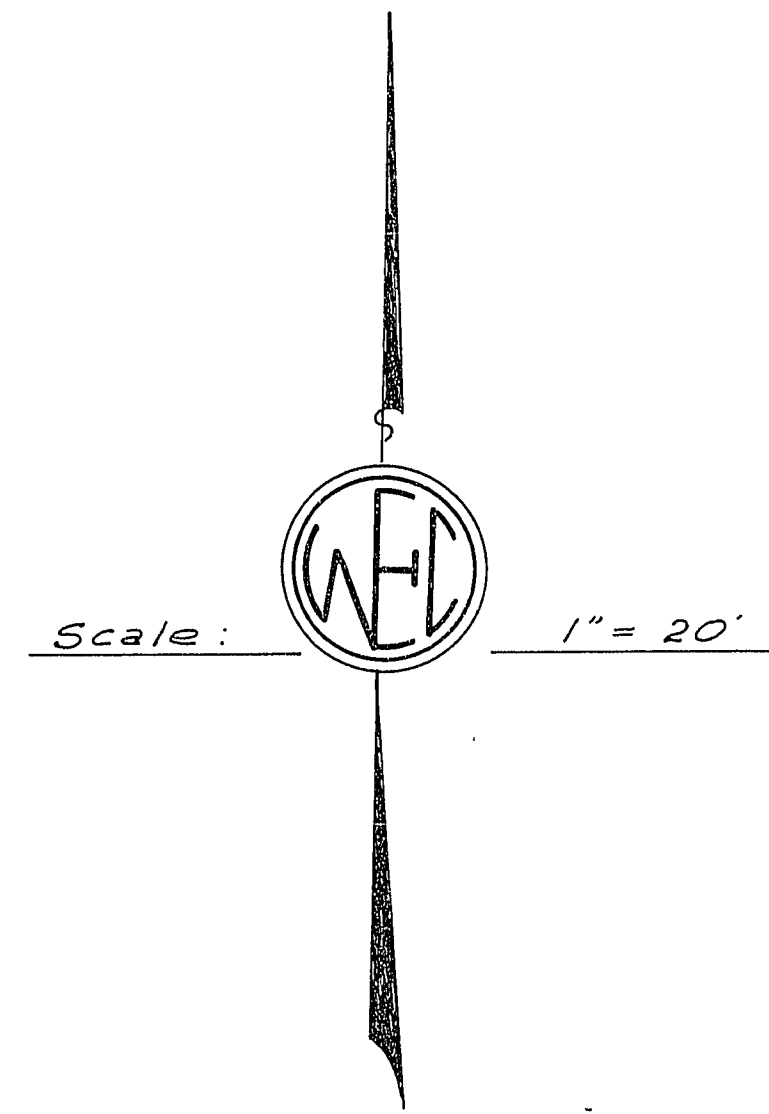
INTERSECTION of MARLBOROUGH AVE & CLAIREMONT ST



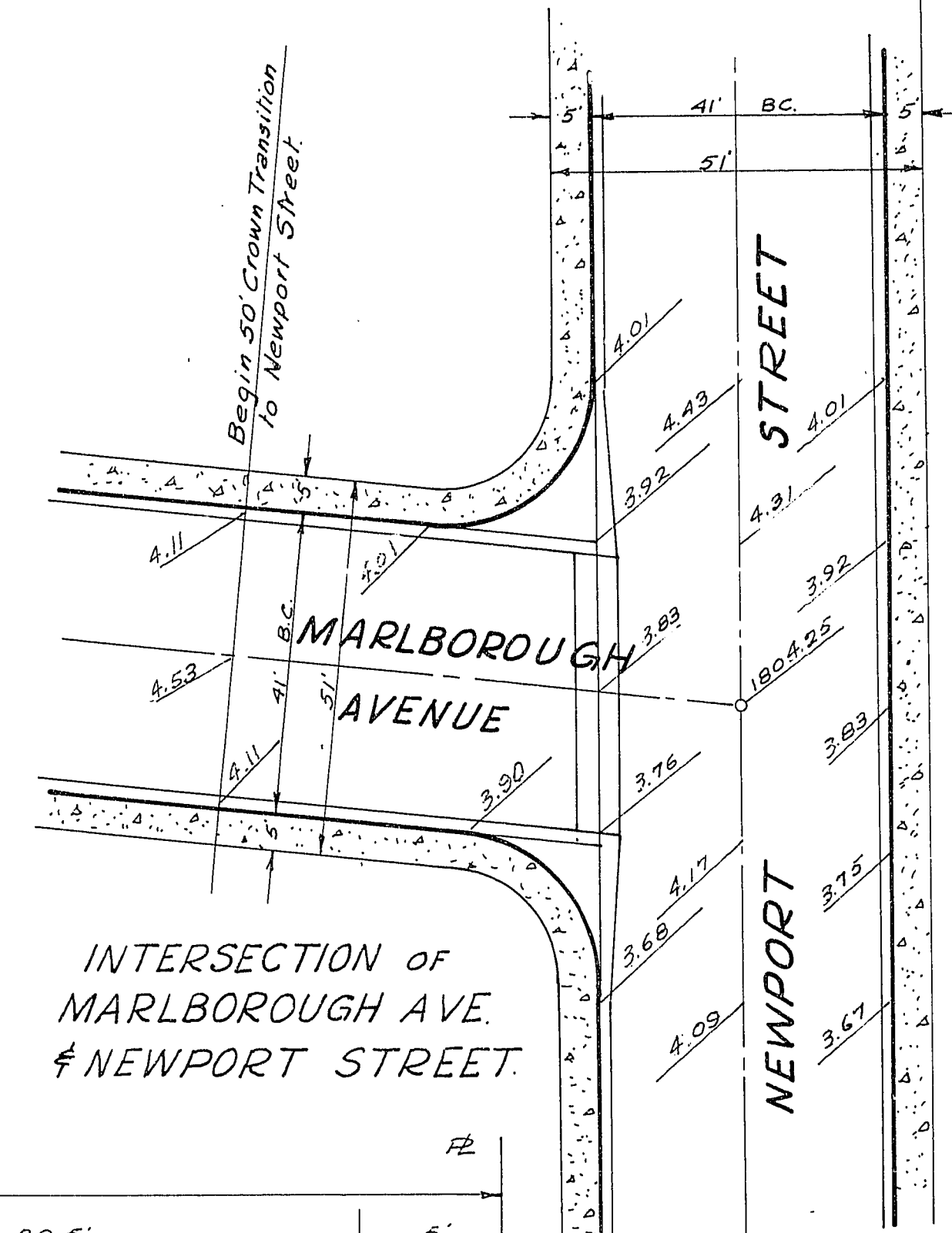
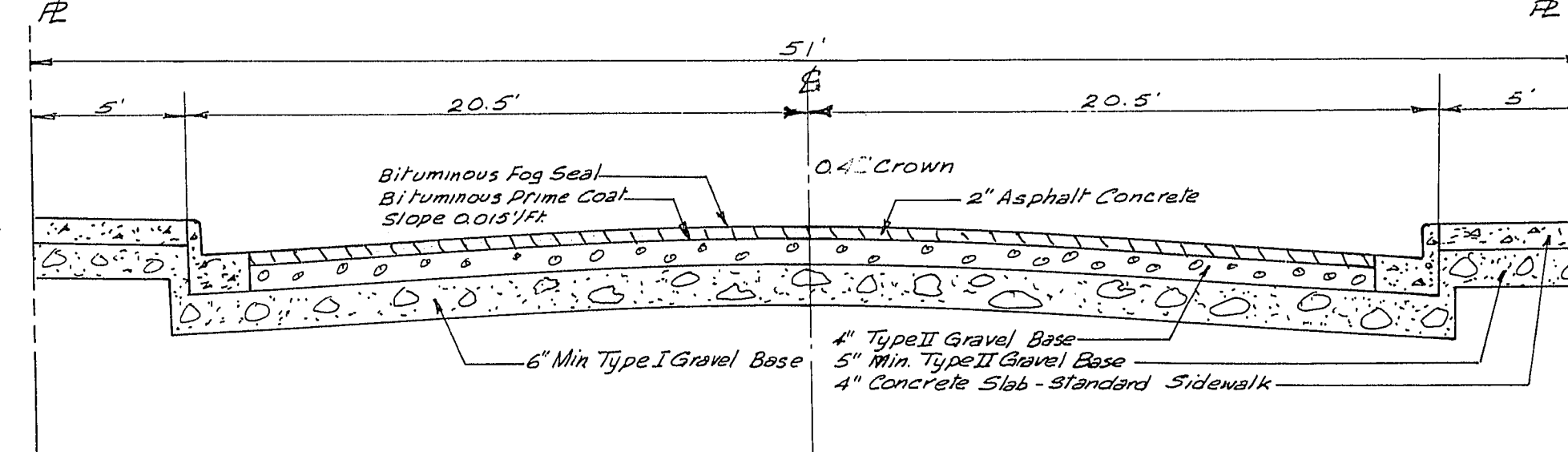
INTERSECTION of CHEVY CHASE AVE & MONTEPELIER ST.



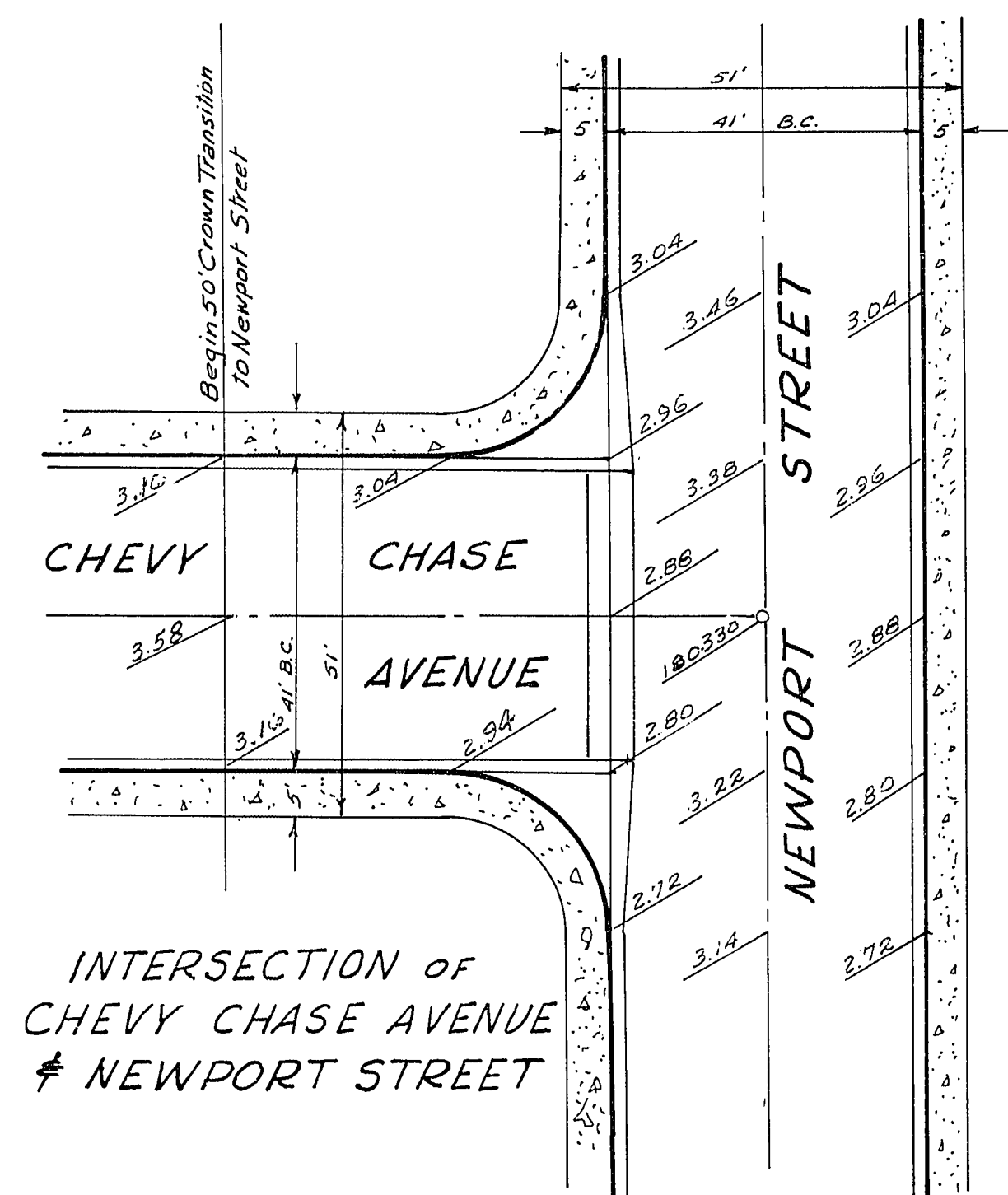
INTERSECTION of CHEVY CHASE AVE & DUMBARTON ST.



TYPICAL SECTION of MARLBOROUGH AVE; CLAIREMONT ST; NEWPORT ST; CHEVY CHASE AVE; DUMBARTON ST; MONTEPELIER ST. (NO SCALE)



INTERSECTION of MARLBOROUGH AVE & NEWPORT STREET



INTERSECTION of CHEVY CHASE AVE & NEWPORT STREET

1	4-20-63	Grade Change	JJ	
Rev.	Date	DESCRIPTION	B4	APPR.

IMPROVEMENT PLANS PREPARED BY
 WITTMAN ENGINEERING CO. *Norris E. Lucette*
 1605 E. Charleston Blvd. R.E. 1712
 Las Vegas, Nevada.

CITY OF LAS VEGAS, NEVADA
 ENGINEERING DEPT.

WASHINGTON SQUARE UNIT No. 1
 INTERSECTION DETAILS

DES.	GEAW	DATE	Dec 62	SC (H)	1" = 20'
DR.				F.B.K. NO.	
E.K.D.				P.J.O. NO.	
APPROVED BY CITY ENGR.	<i>R. P. Lauer</i>		12-27-62	DRAWING NO.	

SHEET 6 OF 17

2-9-124

1074-3275-1