

20000605

00472

WASHINGTON DEVELOPMENT - UNIT 1

BEING A PORTION OF THE NORTHEAST QUARTER (NE 1/4) OF THE SOUTHWEST QUARTER (SW 1/4) OF SECTION 29, TOWNSHIP 20 SOUTH, RANGE 62 EAST, M.D.M., CITY OF LAS VEGAS, CLARK COUNTY, NEVADA.

MONUMENTATION TIE MAP

LEGEND

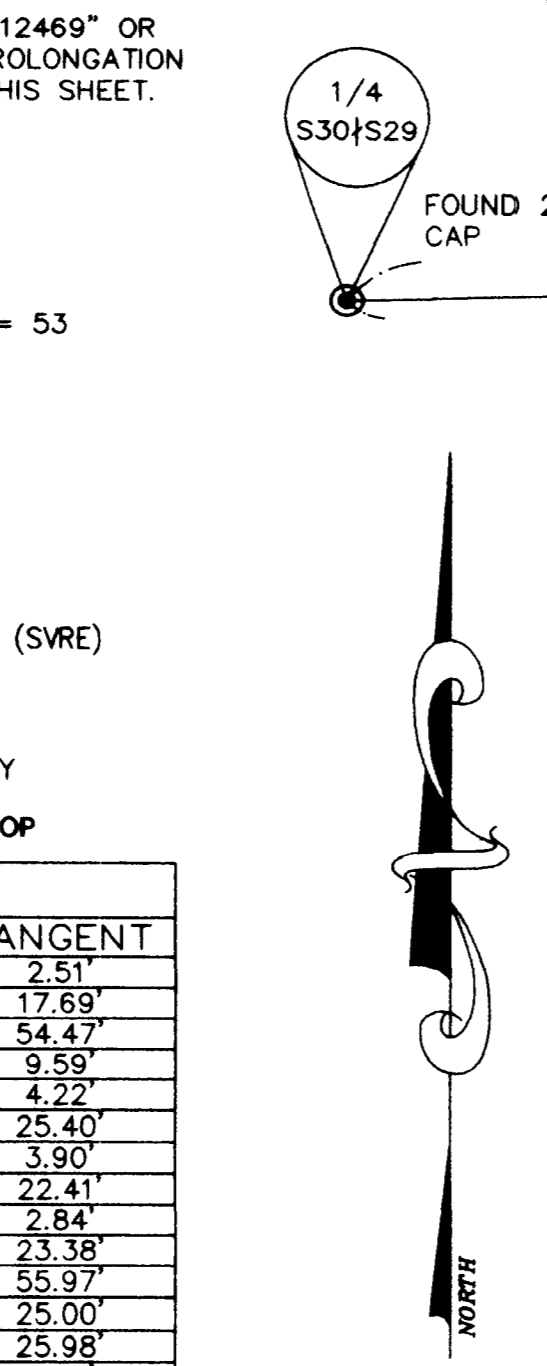
- P.O.C. POINT OF COMMENCEMENT
- P.O.B. POINT OF BEGINNING
- EASEMENT LINE
- BOUNDARY LINE
- LOT LINE
- STREET RIGHT-OF-WAY
- STREET CENTERLINE
- FOUND MONUMENT AS NOTED
- SET NAIL & BRASS TAG "VTN PLS 12469" OR SAW CUT TOP OF CURB ON THE PROLONGATION OF PROPERTY LINES PER NOTE 1 THIS SHEET.
- SET TYPE III MONUMENT "VTN PLS 12469"
- BLOCK NUMBER
- 22 LOT NUMBER / RESIDENTIAL LOTS = 53
- C12 CURVE NUMBER
- L2 COURSE NUMBER
- R10 RADIAL LINE NUMBER
- S.F. SQUARE FEET
- SIGHT VISIBILITY RESTRICTION EASEMENT (SVRE) THE HEIGHT OF LANDSCAPING AND/OR PHYSICAL IMPROVEMENTS WITHIN THIS AREA ARE RESTRICTED TO A MAXIMUM HEIGHT OF 30 INCHES. TO BE PRIVATELY MAINTAINED.
- SEE VTN REFERENCE MONUMENTS IN TOP BACK OF CURB PLS 12469

NO.	RADIUS	DELTA	LENGTH	TANGENT
C1	14.50	19°39'36"	4.98	2.51
C2	45.50	42°30'06"	33.75	17.69
C3	45.50	100°15'13"	79.61	54.47
C4	14.50	66°56'39"	16.94	9.59
C5	50.00	09°38'29"	8.41	4.22
C6	50.00	53°52'11"	47.01	25.40
C7	50.00	08°55'40"	7.79	3.90
C8	66.00	37°30'26"	43.21	22.41
C9	66.00	04°55'38"	5.68	2.84
C10	40.50	59°59'45"	42.41	23.38
C11	15.00	149°59'45"	39.27	55.97
C12	25.00	90°00'00"	39.27	25.00
C13	15.00	120°00'15"	31.42	25.98
C14	66.00	111°44'44"	12.95	6.50
C15	66.00	32°24'37"	37.33	19.18
C16	66.00	28°20'27"	32.65	18.66
C17	66.00	25°48'51"	29.74	15.12
C18	15.00	59°59'45"	15.71	8.66
C19	49.50	26°45'26"	23.12	11.77
C20	75.00	26°45'26"	35.03	17.84
C21	1575.00	07°54'08"	217.22	108.78
C22	100.50	26°45'26"	46.93	23.90
C23	66.00	154°55'25"	178.46	296.77
C24	50.00	72°28'20"	83.21	36.62
C25	20.00	30°00'00"	10.47	5.36
C26	66.00	42°26'04"	48.88	25.62
C27	45.50	266°36'15"	211.72	132.20
C28	25.00	93°14'49"	40.69	26.46
C29	45.50	41°32'51"	32.99	17.26
C30	45.50	44°30'48"	35.35	18.62
C31	45.50	37°47'17"	30.01	15.50
C32	30.00	05°44'21"	3.01	1.50
C33	30.00	26°43'21"	13.99	7.13
C34	66.00	29°23'55"	33.86	17.31
C35	66.00	27°42'50"	31.92	16.28
C36	30.00	32°27'42"	17.00	8.73
C37	100.50	12°22'05"	21.69	10.89
C38	100.50	14°23'21"	25.24	12.69
C39	1580.00	02°39'58"	66.17	33.09
C40	1580.00	02°39'00"	73.08	36.54
C41	1580.00	02°19'01"	63.89	31.95
C42	1580.00	00°24'37"	11.32	5.66
C43	1580.00	07°46'37"	214.46	107.39

NO.	BEARING	DISTANCE
L1	N29°16'40"W	1.76
L2	N89°16'25"W	10.08
L3	S00°43'35"W	30.00
L4	N89°16'25"W	23.78

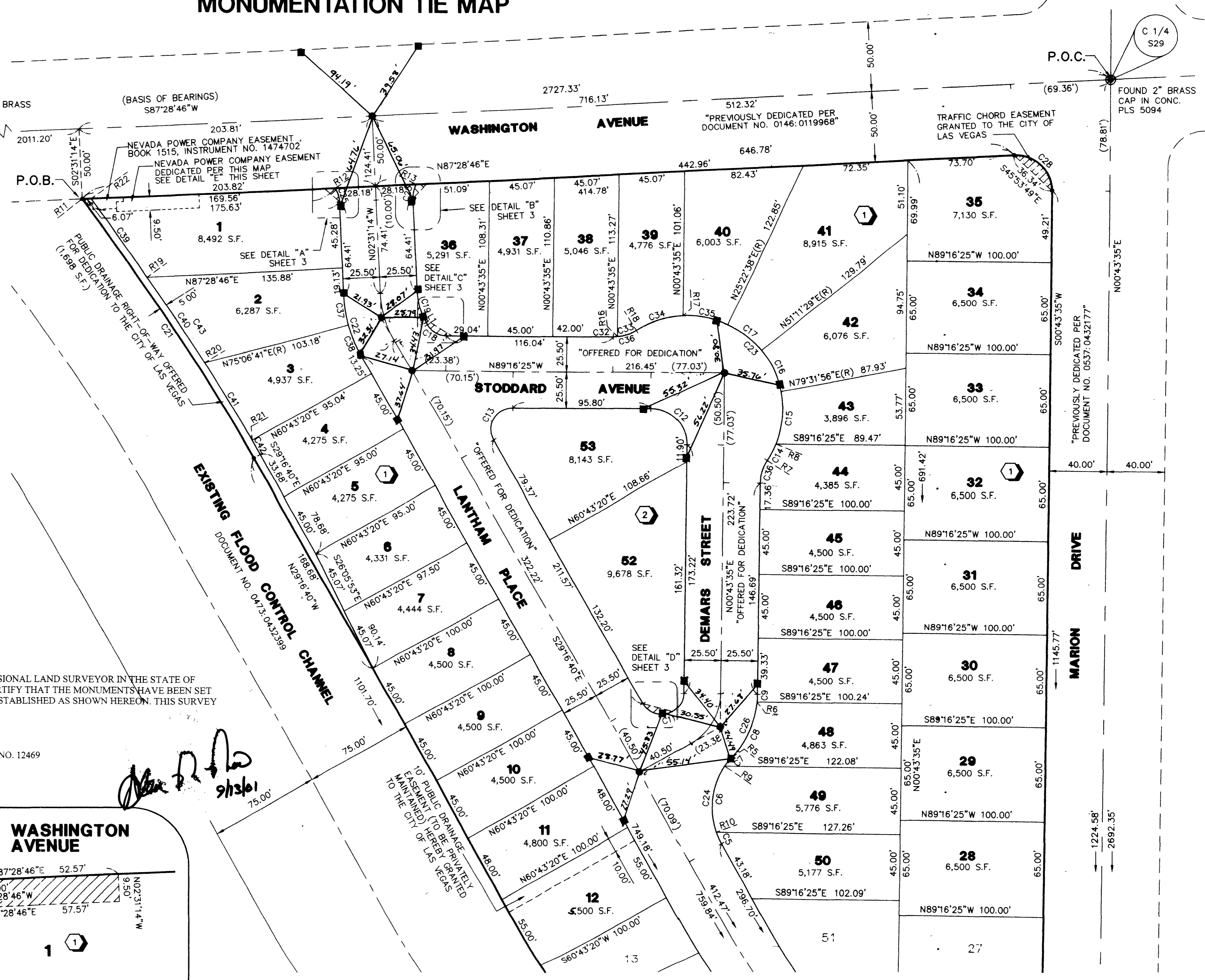
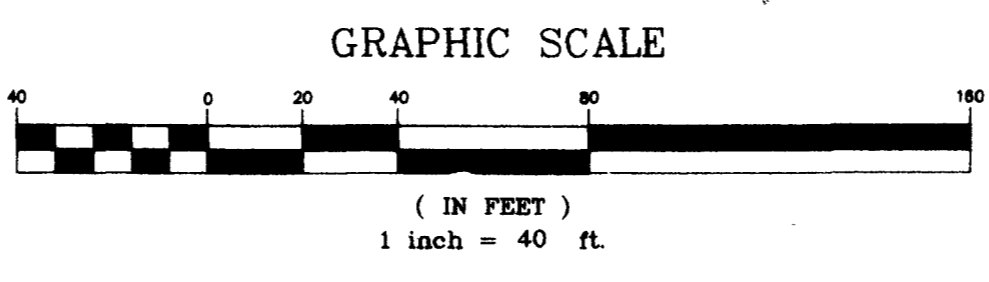
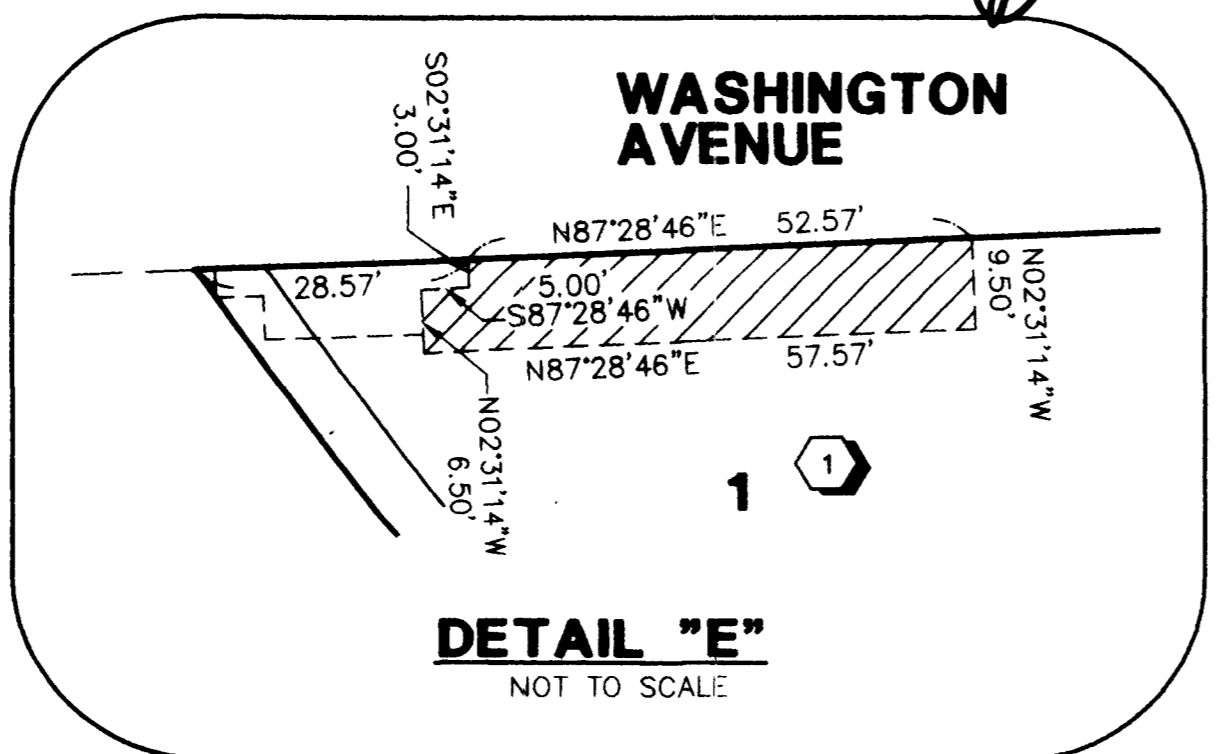
NO.	BEARING	TYPE
R1	N80°22'56"E	PRC
R2	N43°28'00"W	
R3	N85°58'06"W	
R4	N06°13'19"W	PRC
R5	N46°50'20"W	PRC
R6	N84°20'46"W	
R7	S56°48'42"E	PRC
R8	N68°03'27"W	
R9	S55°46'00"E	
R10	N70°21'49"E	
R11	S52°49'12"W	
R12	S57°28'46"W	
R13	S62°31'14"E	
R14	N38°50'05"E	
R15	N05°40'42"W	
R16	N05°00'46"W	
R17	S02°20'12"E	
R18	S31°44'07"E	PRC
R19	S55°20'41"W	
R20	S57°56'41"W	
R21	S60°18'43"W	
R22	S52°56'43"W	

ACT	DATE	BY	REVISION
3	2/9/00	KAK	REV LOTS 1-8, ADD. DRAINAGE ROW DEDICATION
2	12/15/98	KAK	REV LOTS 2 THRU 11
1	12/9/98	KAK	REV LOTS 20, 21 & 24



I, ALAN RIEKKI A PROFESSIONAL LAND SURVEYOR IN THE STATE OF NEVADA, DO HEREBY CERTIFY THAT THE MONUMENTS HAVE BEEN SET AND THE TIE DISTANCE ESTABLISHED AS SHOWN HEREON. THIS SURVEY WAS COMPLETED ON

ALAN RIEKKI
NEVADA CERTIFICATION NO. 12469



NOTES:

- ALL REAR LOT CORNERS SHALL BE SET WITH A NAIL AND BRASS TAG P.L.S. 12469 ON BLOCK WALL AND ALL FRONT OF SIDE LOT CORNERS ADJOINING RIGHT-OF-WAY SHALL BE MARKED BY THE SAW CUTTING OF THE BACK OF CURBS ON THE PROLONGATION OF THE PROPERTY LINES.
- DIRECT VEHICULAR ACCESS TO WASHINGTON AVENUE FROM ABUTTING LOTS IS PROHIBITED.

W.O. 5549
SHEET 1 OF 2
KAK

46281

Book 94 Page 72

058-4633-1