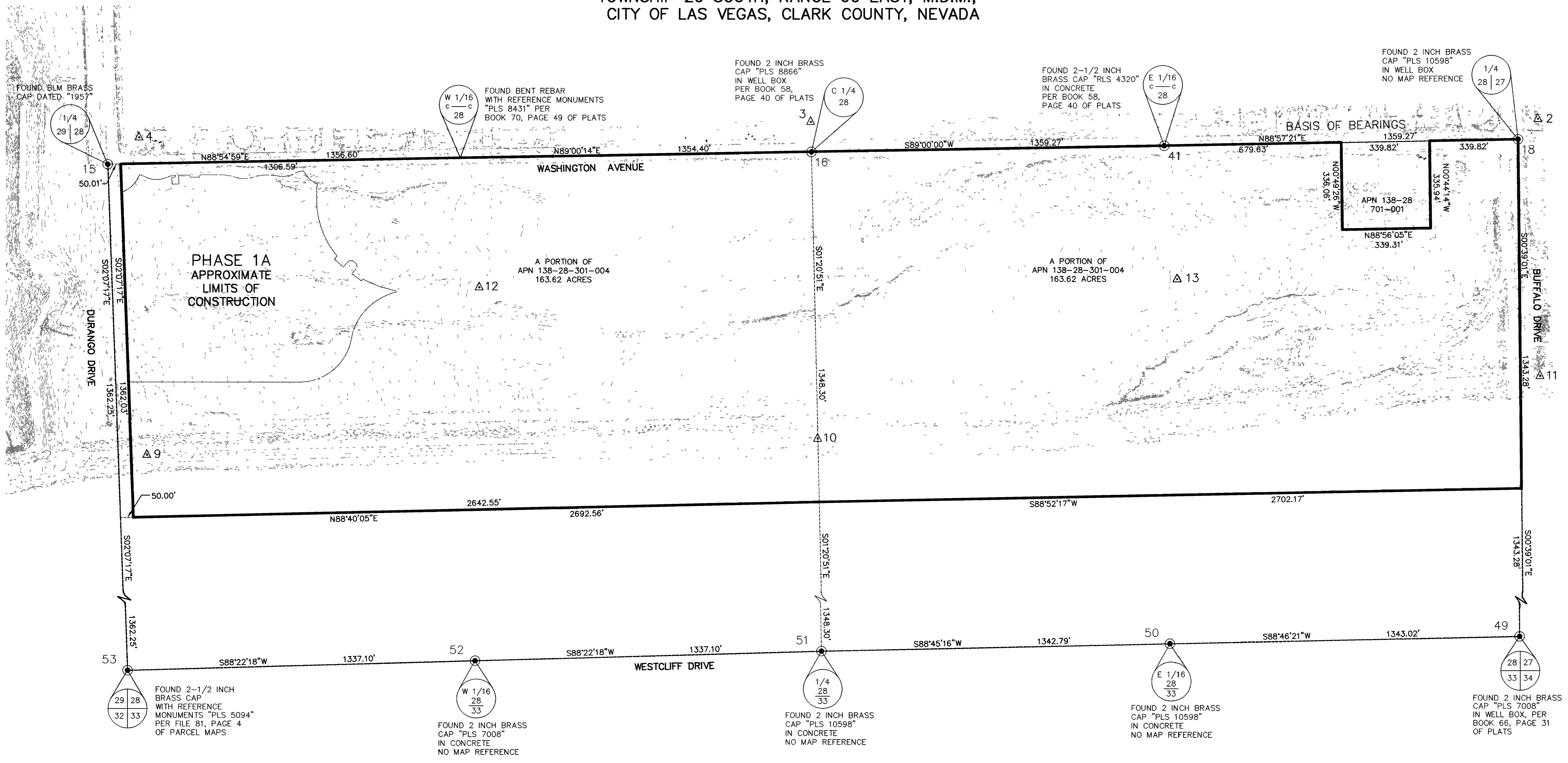


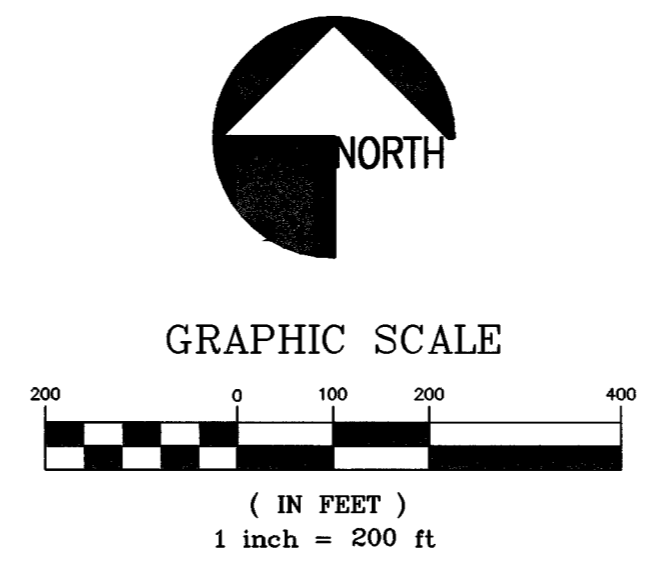
A PORTION OF THE NORTH HALF (N 1/2) OF SECTION 28,
TOWNSHIP 20 SOUTH, RANGE 60 EAST, M.D.M.,
CITY OF LAS VEGAS, CLARK COUNTY, NEVADA



MONUMENT AND CONTROL POINT SCHEDULE

NUMBER	NORTHING	EASTING	ELEVATION	DESCRIPTION
2	10078.61	10076.62	2469.96	SET CONTROL POINT - PK NAIL AND SHINER
3	10067.18	7278.91	2538.60	SET CONTROL POINT - PK NAIL AND SHINER
4	10006.33	4691.80	2598.42	SET CONTROL POINT - PK NAIL AND SHINER
9	8783.19	4723.25	2605.83	SET CONTROL POINT - PK NAIL AND SHINER
10	8847.42	7306.82	2534.34	SET CONTROL POINT - PK NAIL AND SHINER
11	9090.03	10085.54	2479.17	SET CONTROL POINT - PK NAIL AND SHINER
12	9429.71	6000.79	2565.65	SET CONTROL POINT - PLASTIC CAP
13	9462.05	8690.97	2506.07	SET CONTROL POINT - PLASTIC CAP
15	9902.31	4571.35	2599.57	BLM BRASS CAP DATED 1957
16	9951.50	7281.89	2539.17	BRASS CAP "PLS 8866" IN WELL BOX
18	10000.00	10000.00	2475.84	BRASS CAP "PLS 10598" IN WELL BOX
41	9975.23	8640.96	2503.43	BRASS CAP "RLS 4320" IN CONCRETE
49	7313.62	10030.50	2487.68	BRASS CAP "PLS 7008" IN WELL BOX
50	7284.85	8687.78	2519.75	BRASS CAP "PLS 10598" IN CONCRETE
51	7255.66	7345.31	2551.12	BRASS CAP "PLS 10598" IN CONCRETE
52	7217.66	6008.75	2576.04	BRASS CAP "PLS 7008" IN CONCRETE
53	7179.67	4672.19	2611.48	ILLEGIBLE BRASS CAP

- LEGEND**
- 51 ● FOUND MONUMENT AS DESCRIBED
 - △ 10 SET CONTROL POINT AS DESCRIBED
 - SECTION LINE
 - - - ALIQUOT PART LINE
 - PROJECT LIMITS
 - - - APPROXIMATE LIMITS OF CONSTRUCTION



SURVEYOR'S NOTE
THIS SURVEY WAS COMPLETED ON NOVEMBER 8, 2002.



REVISIONS

CONSULTANT

7251 W CHARLESTON BLVD
LAS VEGAS, NEVADA 89117
PHONE (702) 258-0115
FAX (702) 369-8547

Stantec

WASHINGTON BUFFALO PARK - PHASE 1A
WASHINGTON & BUFFALO, LAS VEGAS, NV

HORIZONTAL CONTROL PLAN
(PROJECT AREA)

STAMP

RECORD DOCUMENTS ARE PREPARED FROM DATA AND INFORMATION SUPPLIED BY OTHERS. STANTEC CONSULTING, INC. DOES NOT CERTIFY, NOR WARRANT IN ANY MANNER, THE ACCURACY OR COMPLETENESS OF RECORD DOCUMENTS. STANTEC CONSULTING, INC. ADVISES ANYONE USING RECORD DOCUMENTS, FOR ANY PURPOSE, TO INDEPENDENTLY VERIFY THE ACCURACY OR COMPLETENESS OF THE INFORMATION PRESENTED, AND TO VERIFY THE SUITABILITY OF THE INFORMATION FOR THE PURPOSE FOR WHICH THEY INTEND TO USE THE INFORMATION. STANTEC CONSULTING, INC. SHALL NOT BE RESPONSIBLE FOR ANY PROBLEMS, DISCREPANCIES OR RELATED COSTS THAT MAY ARISE OUT OF THE USE OF RECORD DOCUMENTS.

OWNER: CITY OF LAS VEGAS
DEPARTMENT OF PUBLIC WORKS
ARCHITECTURAL SERVICES

400 EAST STEWART AVENUE
LAS VEGAS, NEVADA 89101
PHONE (702) 239-6535
FAX (702) 382-3232
TDD (702) 386-9108

DRAWN: C. McCULLOCK
FILE: Horizontal Control.dwg
DATE: 7/03
SCALE: 1" = 200'-0"
BID NO: 03.1534102
CLDWG NO: 62076-1A
SHT NO: 100% SUBMITTAL
C4

06934