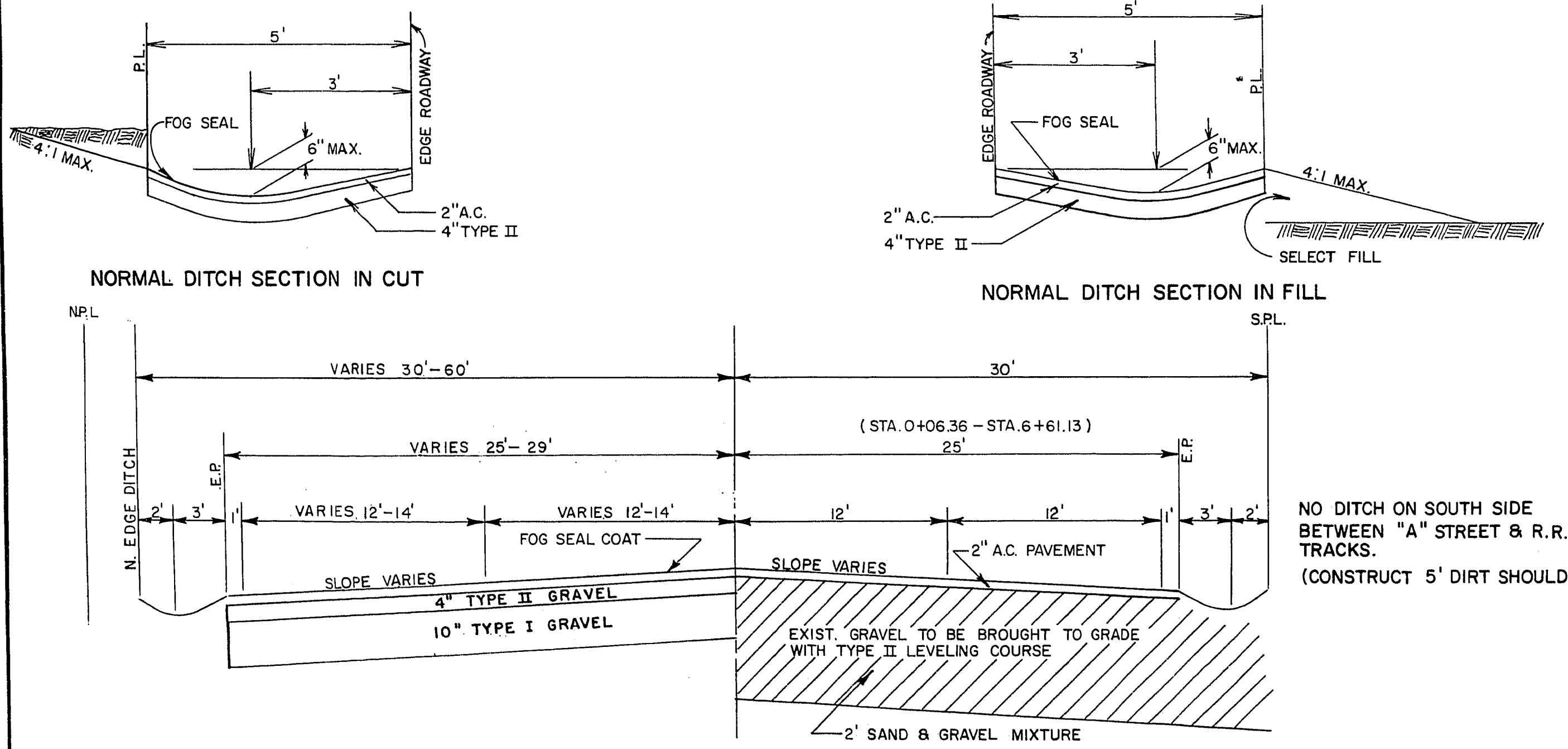
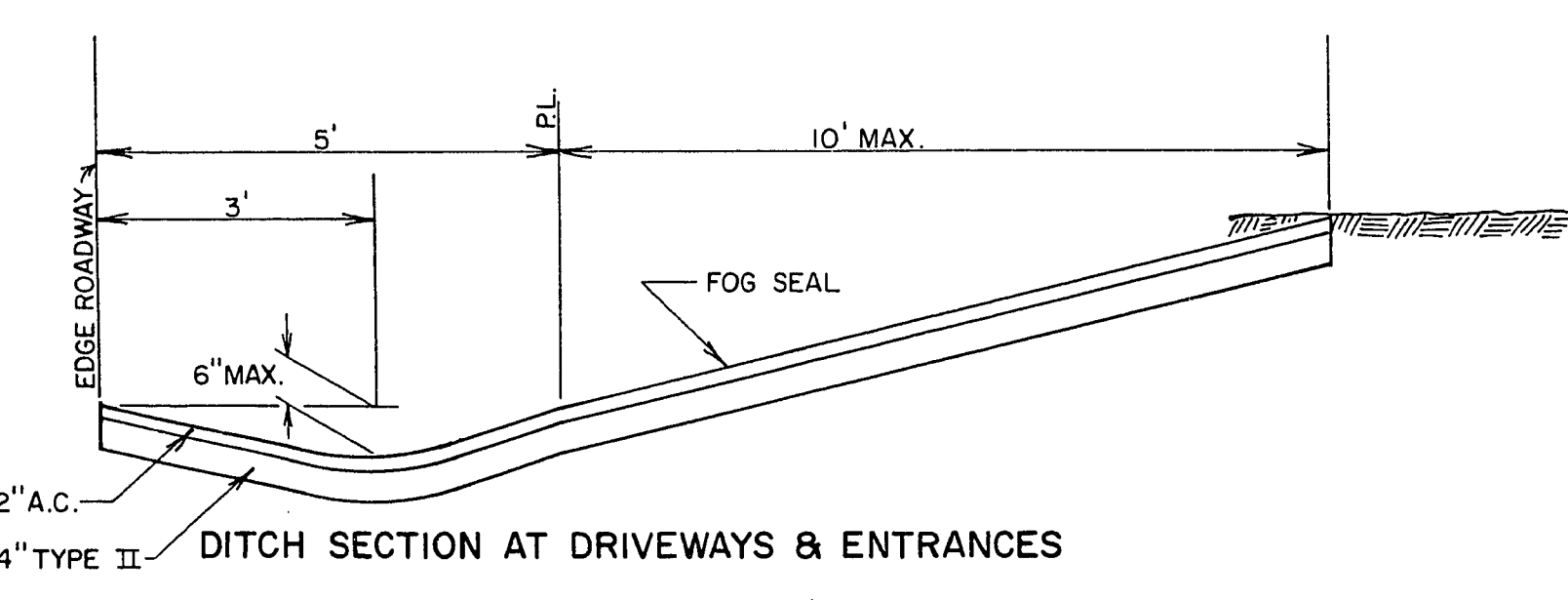


N.S.H.D. DROP INLET TYPE 3



TYPICAL SECTION WASHINGTON AVENUE

CONSTRUCTION NOTES
REMOVAL ITEMS AND NUMBERS

- REMOVE FENCES IN R/W TO LIMITS SHOWN ON PLANS. INSTALL END POSTS IF NECESSARY.
- REMOVE ASPHALT CURB TO LIMITS SHOWN ON PLANS.
- REMOVE ASPHALT PAVEMENT TO LIMITS SHOWN ON PLANS.
- REMOVE CONCRETE CURB & GUTTER OR CONCRETE CURB TO LIMITS SHOWN ON PLANS.
- REMOVE CONCRETE PAVEMENT TO LIMITS SHOWN ON PLANS.

CONSTRUCTION ITEMS AND NUMBERS

- SAWCUT ASPHALT CONCRETE PAVEMENT TO LIMITS SHOWN ON PLANS.
- CONSTRUCT 2" ASPHALT CONCRETE PAVEMENT OVER 4" TYPE II BASE AND FOG SEAL SURFACE.
- CONSTRUCT 2" ASPHALT CONCRETE PAVEMENT OVER EXIST. BASE OR TYPE II LEVELING CSE. AND FOG SEAL.
- CONSTRUCT 2" ASPHALT CONCRETE PAVEMENT OVER 4" TYPE II GRAVEL OVER 10" TYPE I GRAVEL AND FOG SEAL SURFACE.
- CONSTRUCT "L" TYPE CURB & GUTTER PER UNIFORM STANDARD DRAWING NO. 340.1.
- GAS LINE TO BE RELOCATED BY SOUTHWEST GAS COMPANY.
- POWER POLE TO BE MOVED OFF PROPOSED ROADWAY BY NEVADA POWER COMPANY.
- R.R. X-ING TO BE BUILT BY UNION PACIFIC RAILROAD AS PER DETAIL ON SHEET NO. 3.
- FENCE TO BE RELOCATED BY PROPERTY OWNER UPON 30 DAYS NOTICE BY CITY OF LAS VEGAS.
- BILLBOARD TO BE RELOCATED BY PROPERTY OWNER UPON 30 DAYS NOTICE BY CITY OF LAS VEGAS.
- R.R. CONTROL BOX, LEVER GATE & SIGNAL LIGHT TO BE RELOCATED BY UNION PACIFIC RAILROAD.
- CONSTRUCT "L" TYPE ISLAND CURB & GUTTER PER UNIFORM STANDARD DRAWING NO. 340.2.
- CONVERT DROP INLET TO JUNCTION BOX & ADJUST TO GRADE
- CONSTRUCT DROP INLET (N.S.H.D. TYPE 3)
- INSTALL 15" R.C.P.
- CONSTRUCT FIRE HYDRANT

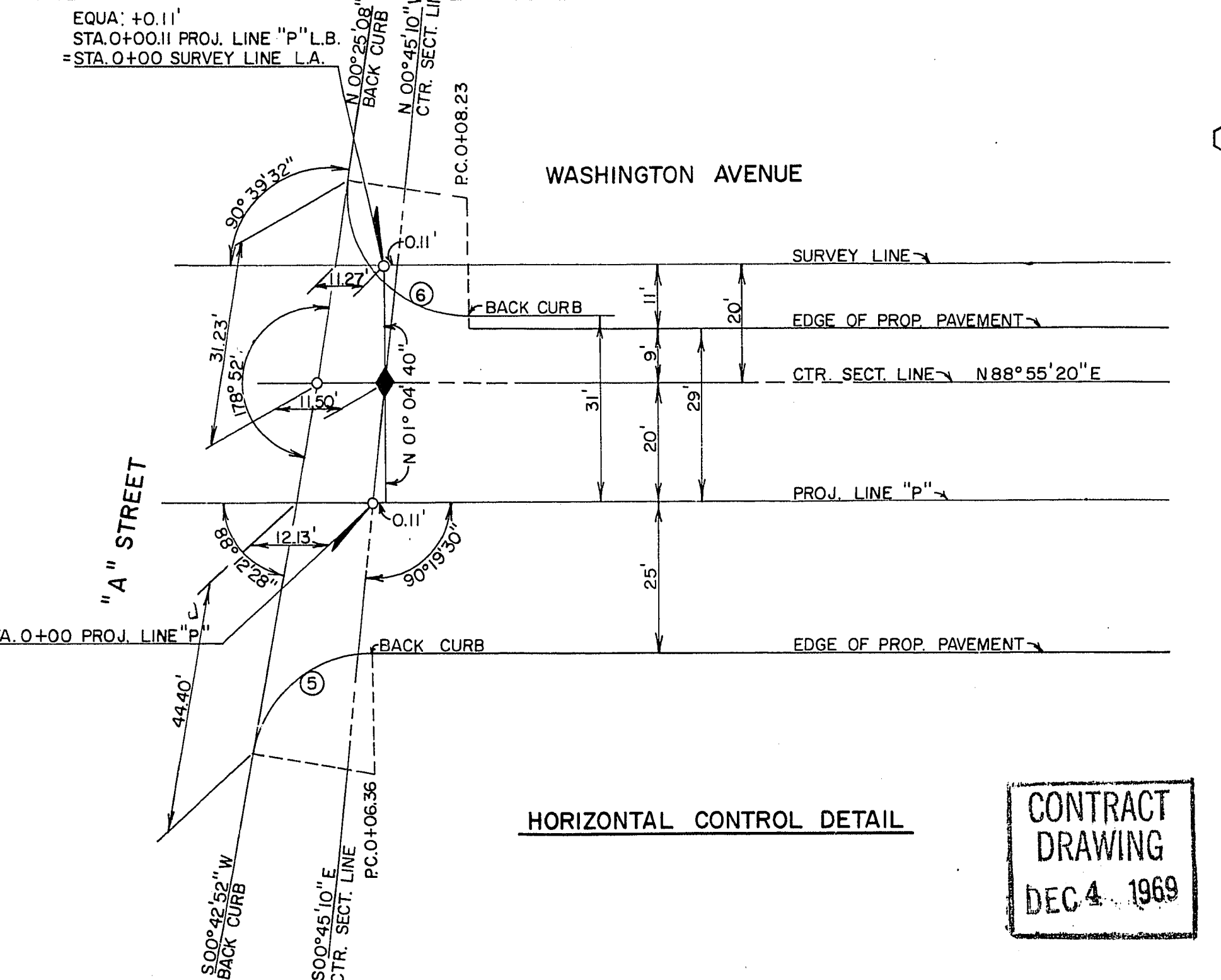
LEGEND

- SURVEY LINE, SECTION LINE, OR CENTER LINE
- PROPERTY LINE OR R/W LINE
- PROPOSED "L" TYPE CURB AND GUTTER
- EXISTING "L" TYPE CURB AND GUTTER
- FINISHED & GRADE
- EXISTING & GRADE
- SAWCUT LINE, ASPHALT OR CONCRETE
- EXISTING FENCE
- EDGE OF EXISTING A.C. PAVEMENT
- EDGE OF PROPOSED STREET PAVEMENT
- CURVE DATA AT BACK OF CURB AND & OF ROADWAY OR EDGE OF PROPOSED STREET PAVEMENT
- CONSTRUCTION NOTES
- EXISTING STREET LIGHTS
- EXISTING TRAFFIC SIGNAL
- EXISTING POWER POLE
- EXISTING ELEVATION
- DESIGN ELEVATION
- EXISTING WATER LINE
- EXISTING GAS LINE

EXISTING BASE		LEVELING COURSE		
STATION	TO	STATION	TO	STATION
0+16.13	—	0+25	—	1+75
1+75	—	2+96	—	3+24
7+25	—	7+91	—	7+25

SUMMARY OF APPROXIMATE QUANTITIES

CONST. NOTE NO.	ITEM NUMBER	DESCRIPTION	UNIT	QUANTITY	
①	200.110	REMOVE FENCE	L.F.	225	
	201.100	EXCAVATION	C.Y.	1257	
③	200.100	REMOVE A.C. PAVEMENT	S.Y.	3714	
②	200.100	REMOVE A.C. CURB	L.F.	352	
④	200.110	REMOVE CONCRETE CURB	L.F.	140	
④	200.110	REMOVE CONCRETE CURB & GUTTER	L.F.	258	
⑥	201.100	SAWCUT A.C. PAVEMENT	L.F.	827	
⑦A	302.200	TYPE II LEVELING COURSE	C.Y.	189	
⑧	302.100	TYPE I GRAVEL	C.Y.	619	
⑧	302.200	TYPE II GRAVEL	C.Y.	356	
⑦A	⑧	334.004	2" A.C. PAVEMENT	S.Y.	4711
⑦	334.904	2" A.C. PAVEMENT (DITCH)	S.Y.	956	
⑨	340.014	CONSTRUCT "L" TYPE CURB & GUTTER	L.F.	189	
⑩	340.013	CONST' 18" "L" TYPE CURB & GUTTER (ISLAND)	L.F.	47	
⑪	500.22T	CONVERT DROP INLET TO JUNCTION BOX	EA.	1	
⑫	500.30T	CONSTRUCT DROP INLET (N.S.H.D. TYPE 3)	EA.	1	
⑬	121.215C	INSTALL 15" R.C.P.	L.F.	117	
⑭	560.500	CONSTRUCT FIRE HYDRANT	EA.	1	



CONTRACT DRAWING
DEC 4, 1969

CITY OF LAS VEGAS NEVADA
DEPARTMENT OF PUBLIC WORKS
SERVICES DIVISION

WASHINGTON AVE. WIDENING
"A" ST. TO MAIN ST.

W.O. NO. 3028	F.B.K. NO. 67-4X	DATE	DRAWING NO.
SC. (H) NONE	SC. (V)		107V798
DES. WARREN JAUBERT	DR. HAROLD FRAZIER	10/16/69	FILE NO.
APPROVED BY DIRECTOR OF PUBLIC WORKS			
DEC 4, 1969			

SHEET 2 OF 4