

RCB CONSTRUCTION NOTES

DESIGN SPECIFICATIONS: AASHTO "Standard Specifications for Highway Bridges 1983" and "Interim Specifications Bridges 1985".

CONSTRUCTION SPECIFICATIONS: "Uniform Standard Specifications for Public Works Construction Off-Site Improvements, Clark County Area, Nevada 1986", except as noted in the Special Provisions for this Contract.

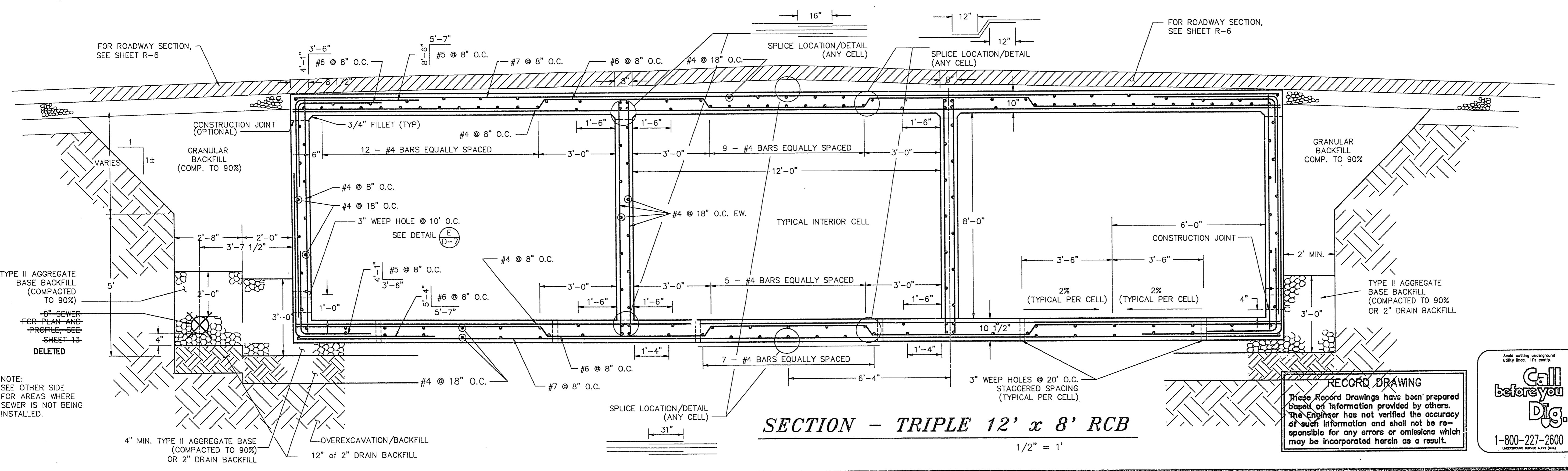
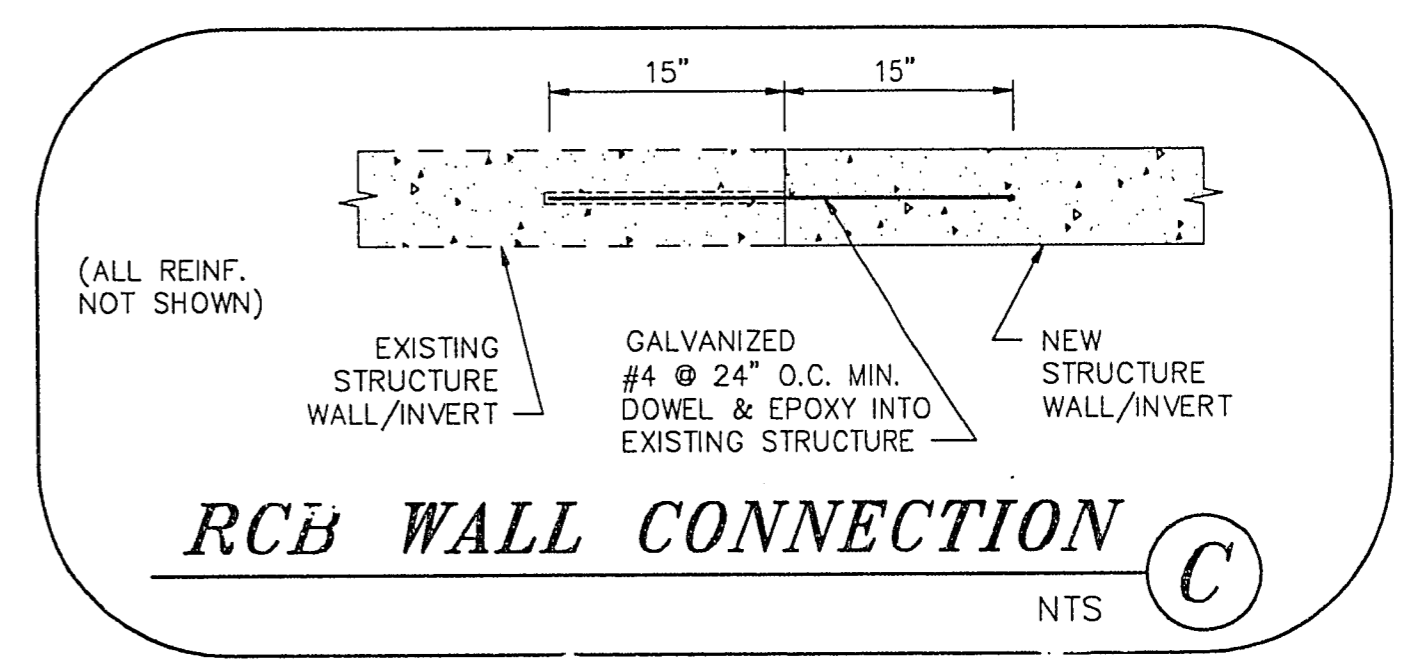
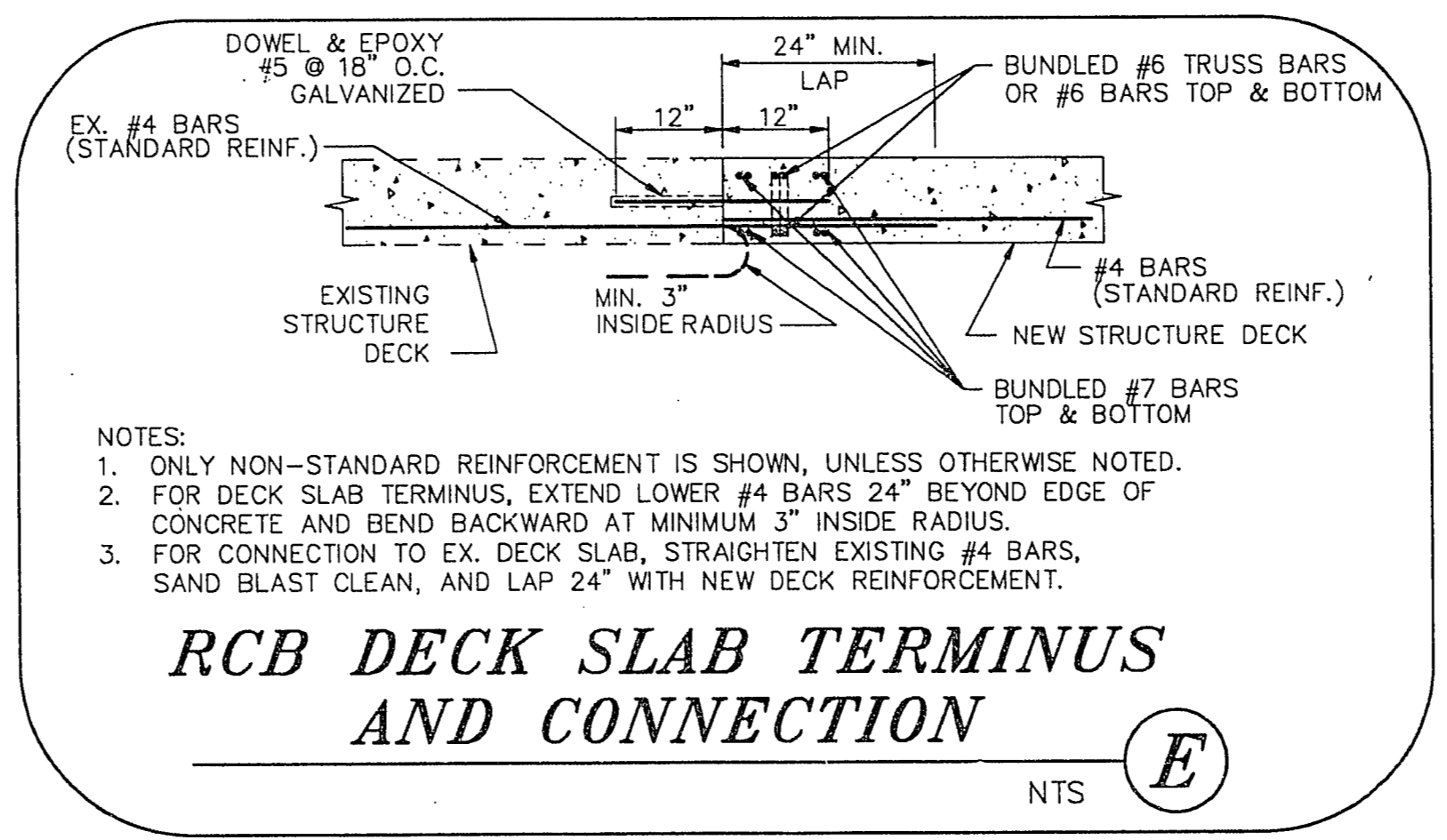
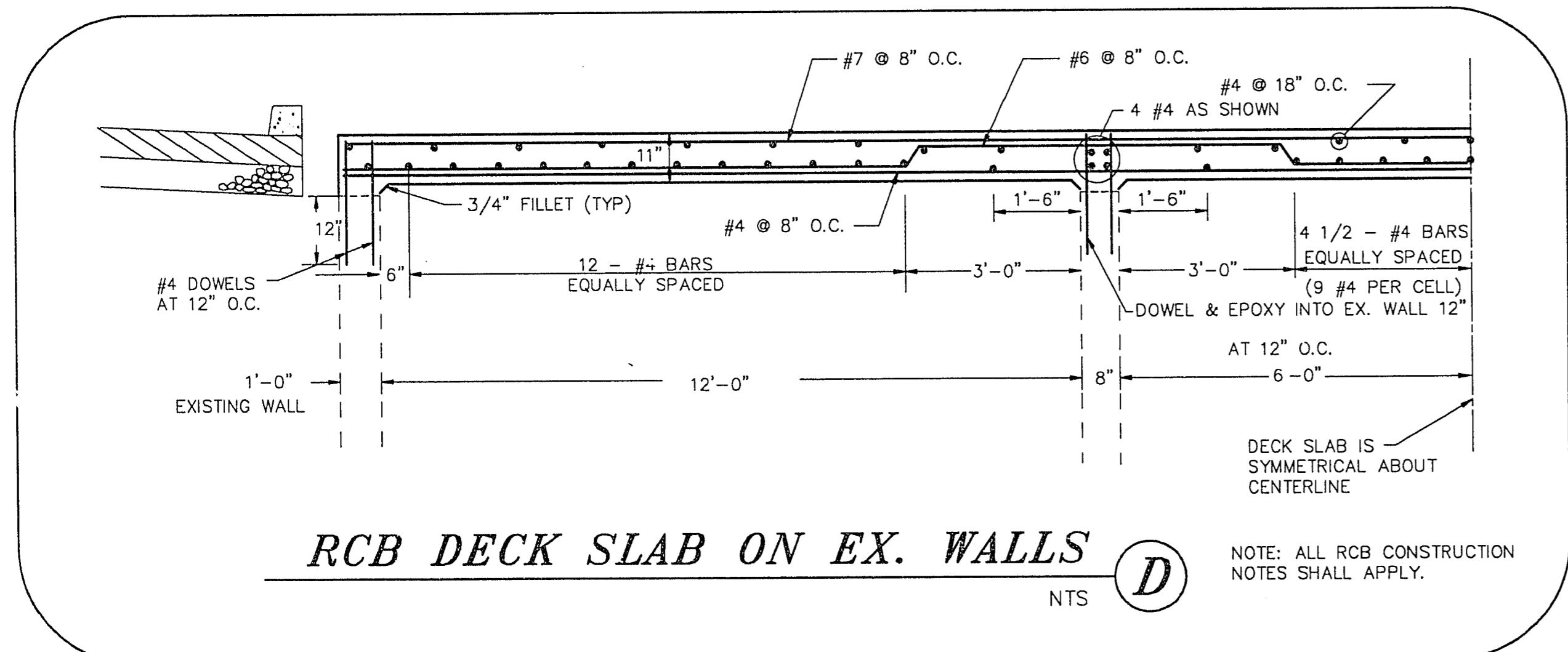
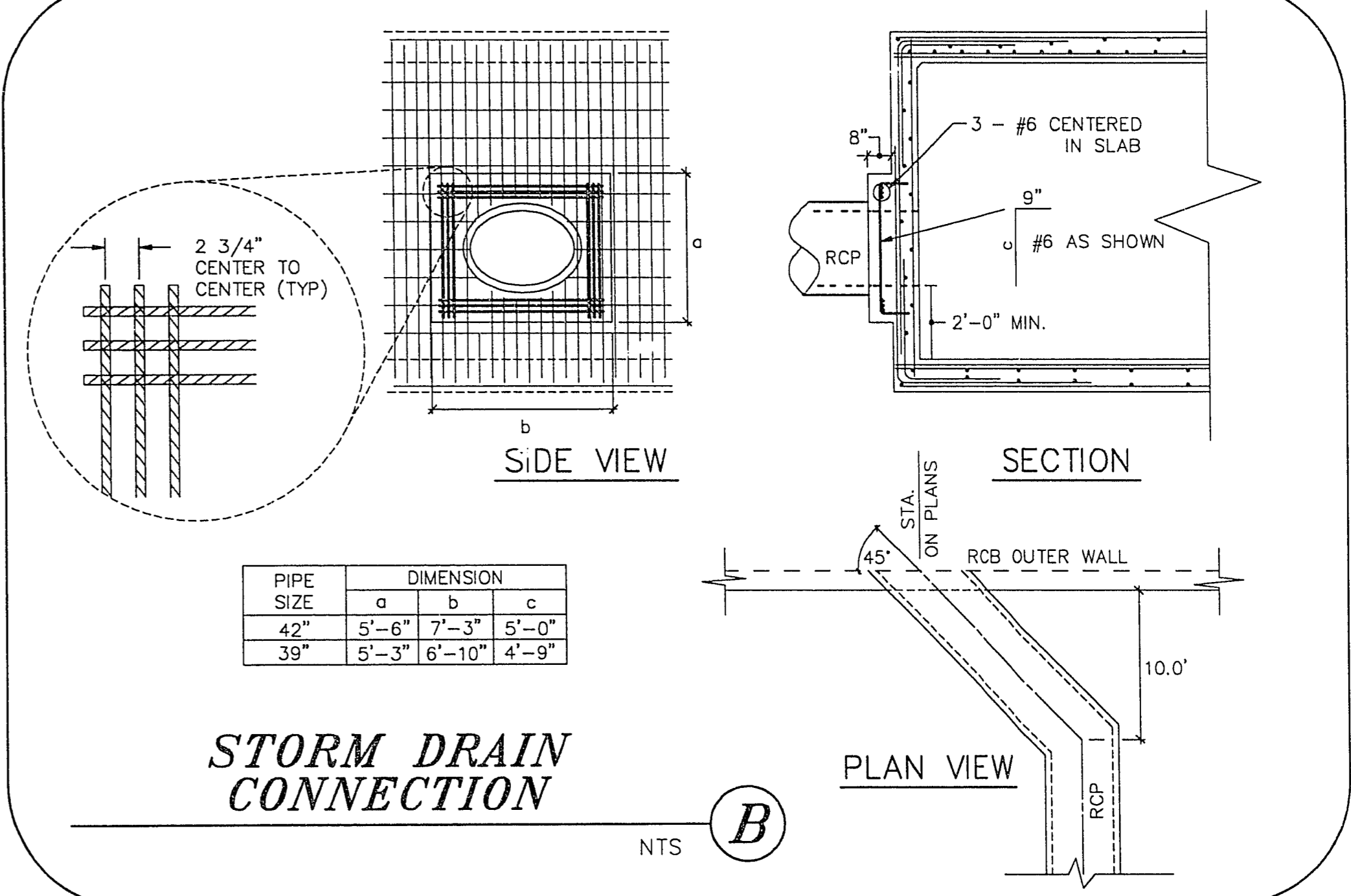
LIVE LOADS: Standard HS 20-44 Loading.

CONCRETE: All concrete to be Class DA, Type V (6 sack minimum, 0.50 water/cement ratio), with a twenty-eight (28) day compressive strength of 4,000 P.S.I.

REINFORCING STEEL: All reinforcing steel to be ASTM A 615 Grade 60. Bottom slab reinforcement shall have three inch (3") clearance. All other reinforcement shall have a two inch (2") clearance unless otherwise noted on the plans.

WEEP HOLES: 6" square aluminum or galvanized steel wire 1/4" mesh hardware cloth (minimum wire diameter - 0.025") shall be firmly anchored to backface at each weep hole.

JOINTS:
Invert - No expansion joints are permitted
Roof and Walls - Place weakened plane joints at 30' centers.
SEE DETAIL (D) (D7)



REVISIONS

No.	Date	Description

DESIGNED: LJC
DRAWN: GZ/DJK
CHECKED: LJC
JOB NO. 393-2-91
SCALE: HORIZ. AS NOTED
VERT. AS NOTED

1055 EAST TROPICANA
SUITE 800
LAS VEGAS, NEVADA 89119
(702) 799-1007

MAE
CONSULTING ENGINEERS

CITY OF LAS VEGAS
WASHINGTON AVENUE CONVEYANCE SYSTEM
RCB SECTION and DETAILS

PROJECT DESCRIPTION

SHEET **D-4**
7 OF 23

1-800-227-2600
MEMPHIS SERVICE AREA ONLY

Call before you Dig

These Record Drawings have been prepared based on information provided by others. The Engineer has not verified the accuracy of such information and shall not be responsible for any errors or omissions which may be incorporated herein as a result.