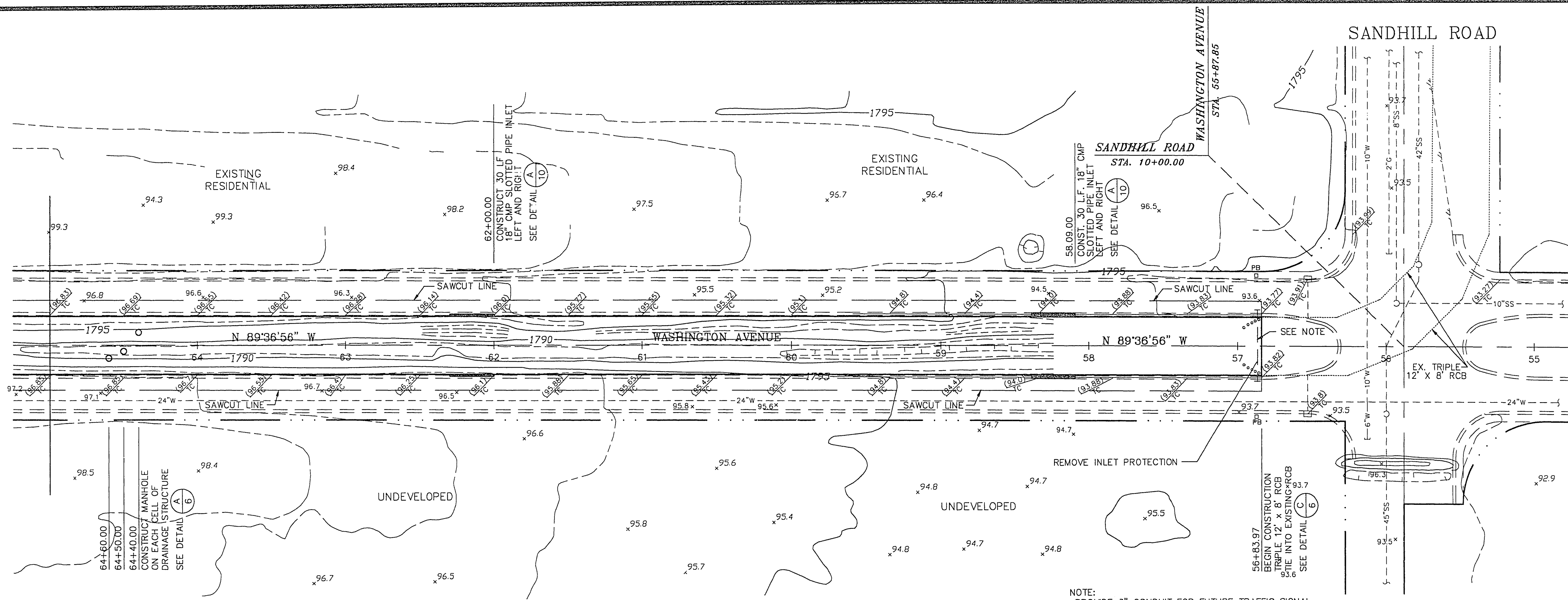


MATCH LINE - STA. 65+00
SEE SHEET 4

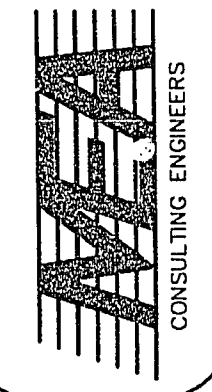


NOTE:
PROVIDE 3" CONDUIT FOR FUTURE TRAFFIC SIGNAL.
CONDUIT SHALL BE LOCATED WITHIN THE RCB
ROOF AND SHALL EXTEND 18" BEYOND THE OUTER
WALLS OF THE RCB. THE PAVEMENT OR CURB SHALL
BE PERMANENTLY MARKED TO LOCATE THE CONDUIT
STUBS.



DESIGNED: BB/CK
DRAWN: CK/TM
CHECKED: JHG
JOB NO. 393-91
SCALE: 1" = 40'
HORIZ. 1" = 40'
VERT. 1" = 4'

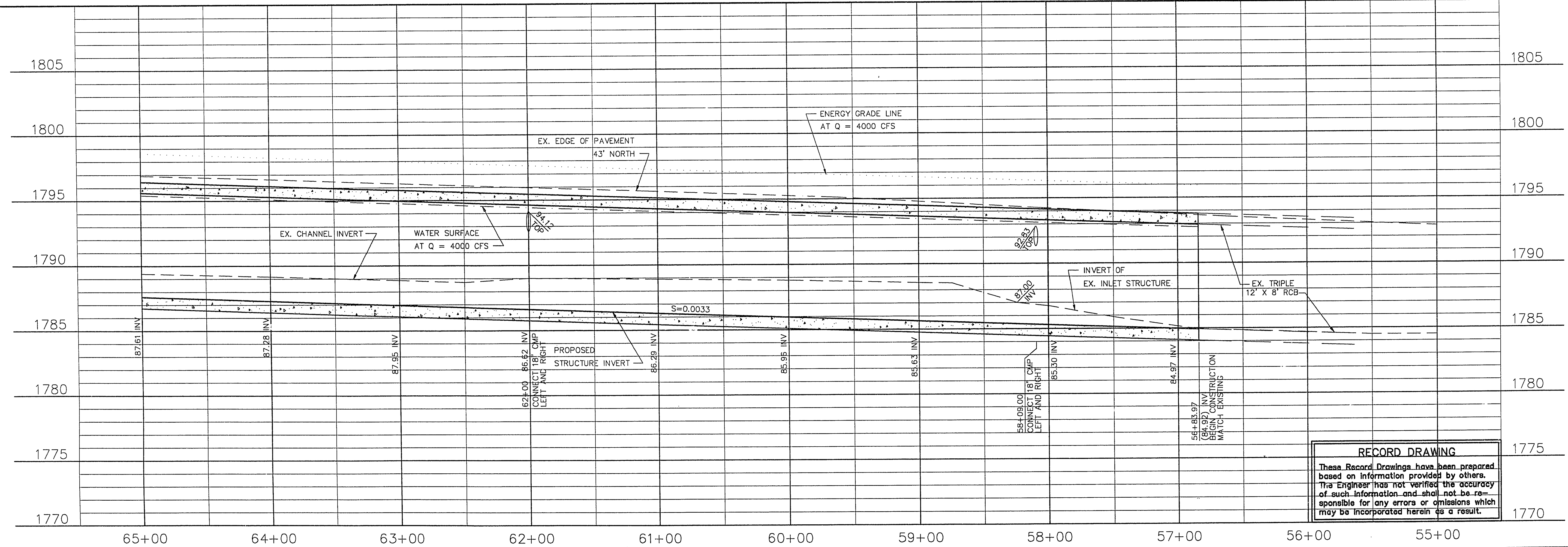
1055 EAST TROPICANA
SUITE 800
LAS VEGAS, NEVADA 89119
(702)798-1007



PROJECT: CITY OF LAS VEGAS
WASHINGTON AVENUE CONVEYANCE SYSTEM
DESCRIPTION: DRAINAGE STRUCTURE PLAN and PROFILE
STA. 65+00 to 55+00

SHEET 5 OF 12

24-159



RECORD DRAWING
These Record Drawings have been prepared based on information provided by others. The Engineer has not verified the accuracy of such information and shall not be responsible for any errors or omissions which may be incorporated herein as a result.