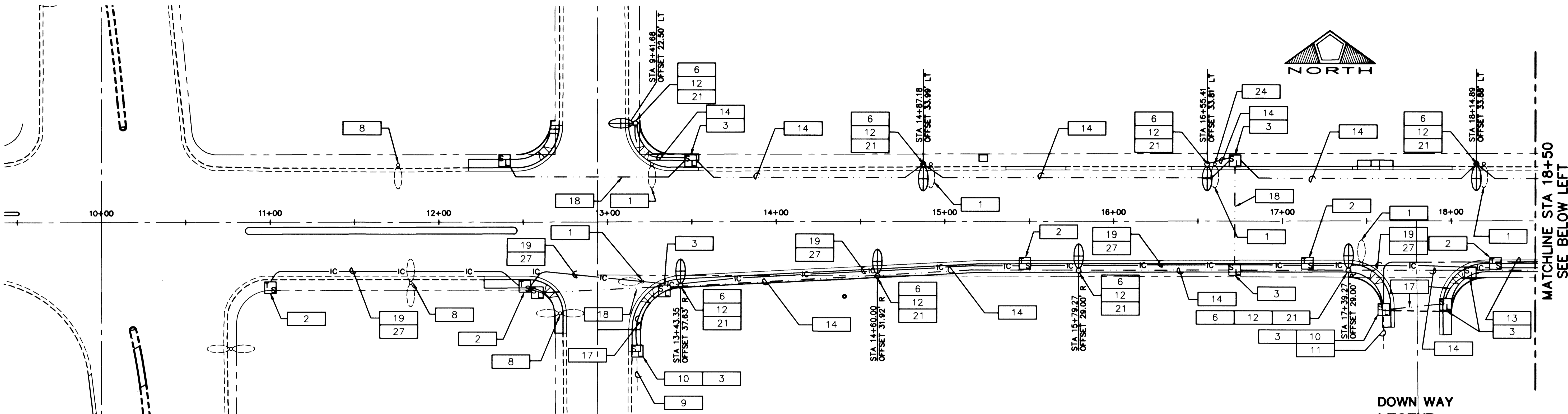


MARTIN LUTHER KING BLVD.

N STREET



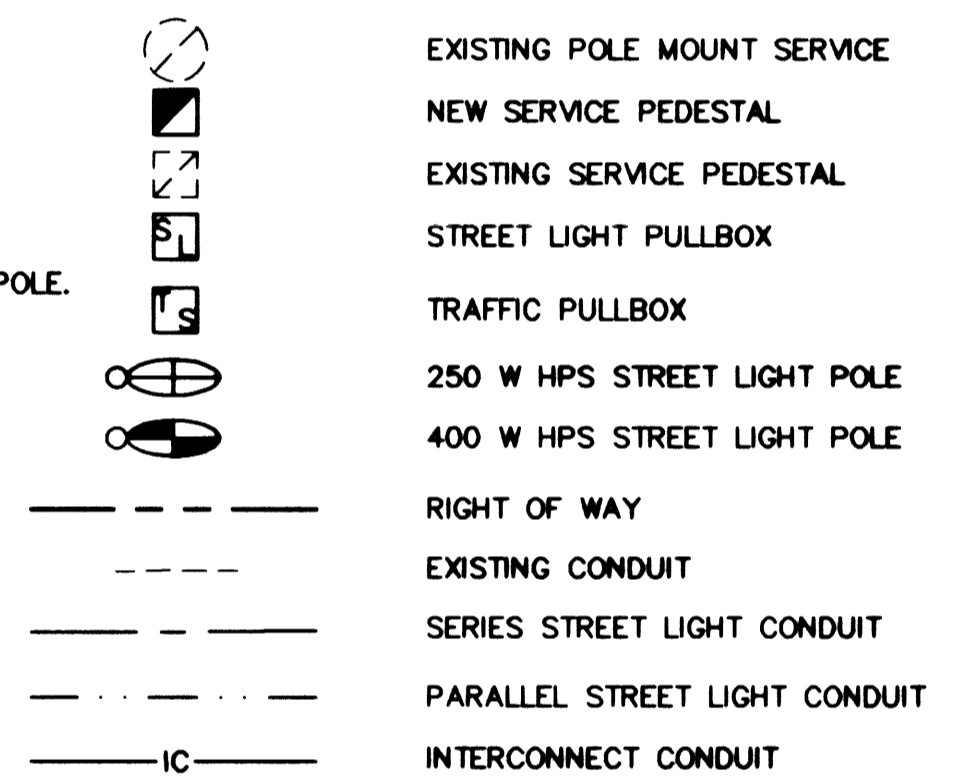
ELECTRICAL NOTES

- 1 REMOVE EXISTING SERIES STREET LIGHT AND CUT BASE DOWN A MINIMUM OF 18" BELOW FINISH GRADE.
- 2 INSTALL NO. 7 PULL BOX, LABELED 'TRAFFIC SIGNAL'.
- 3 INSTALL NO. 3-1/2 PULL BOX, LABELED 'STREETLIGHT'.
- 4 EXISTING PAD MOUNTED METERED SERVICE PEDESTAL.
- 5 NEW 200 AMP SERVICE PEDESTAL. SEE SHEET T-1.
- 6 INSTALL 10/2 UF WITH GROUND UP TO HEAD PER CCUSD DWG. #338.
- 7 INTERCEPT EXISTING PARALLEL STREET LIGHTING CIRCUIT.
- 8 FIXTURE TO REMAIN.
- 9 EXISTING 1-1/4" WITH 2-6KV SERIES STREET LTG. CABLES.
- 10 INTERCEPT 6KV SERIES STREET LIGHTING CIRCUIT.
- 11 EXISTING 1-1/4" WITH 6KV SERIES STREET LTG. CABLES.
- 12 INSTALL STREET LIGHT POLE AND FOUNDATION PER CCUSD DWG. #321.

- 13 INSTALL 6KV SERIES CABLE IN 1-1/4"C.
- 14 INSTALL 2 #4, 1 #8, 1-1/4"C FOR STREET LIGHT CIRCUIT.
- 15 RELOCATE EXISTING FLASHER AND UPGRADE POLE TO TYPE XX PER CCUSD DWG. #404.413 AND FOUNDATION TO TYPE H PER CCUSD DWG. #404.208 STUB AND CAP CONDUIT AT LIMITS OF CONSTRUCTION.
- 16 STUB AND CAP CONDUIT AT LIMITS OF CONSTRUCTION.
- 17 CONNECT SERIES PULL BOX AND PARALLEL PULL BOX WITH 2" C.O.
- 18 INSTALL 2" C.O. TO PULL BOX.
- 19 3" C. WITH (1) 1" INNERDUCT. GREEN #8 THW IN BOTH CONDUIT AND INNERDUCT.
- 20 REMOVE EXISTING STREET LIGHT AND CUT BASE DOWN A MINIMUM OF 18" BELOW FINISH GRADE TRAFFIC SIGNAL FOUNDATION AND POLE WITH LUMINAIRE ARM TO BE INSTALLED AND FUNCTIONAL PRIOR TO REMOVAL OF EXISTING STREET LIGHT.

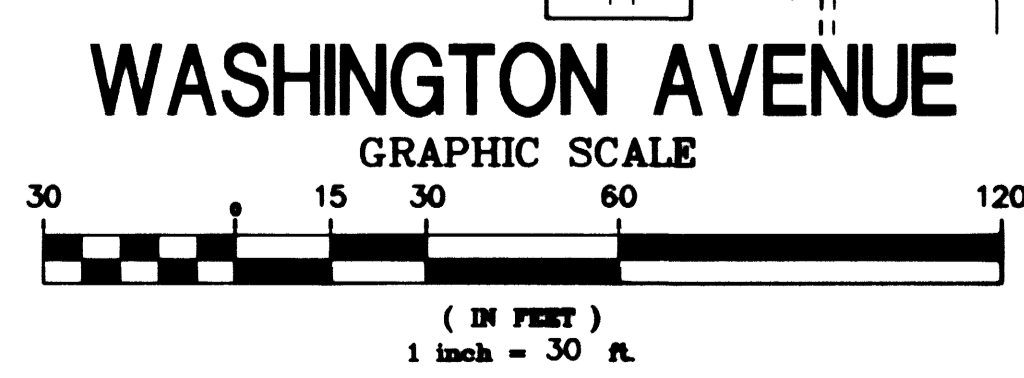
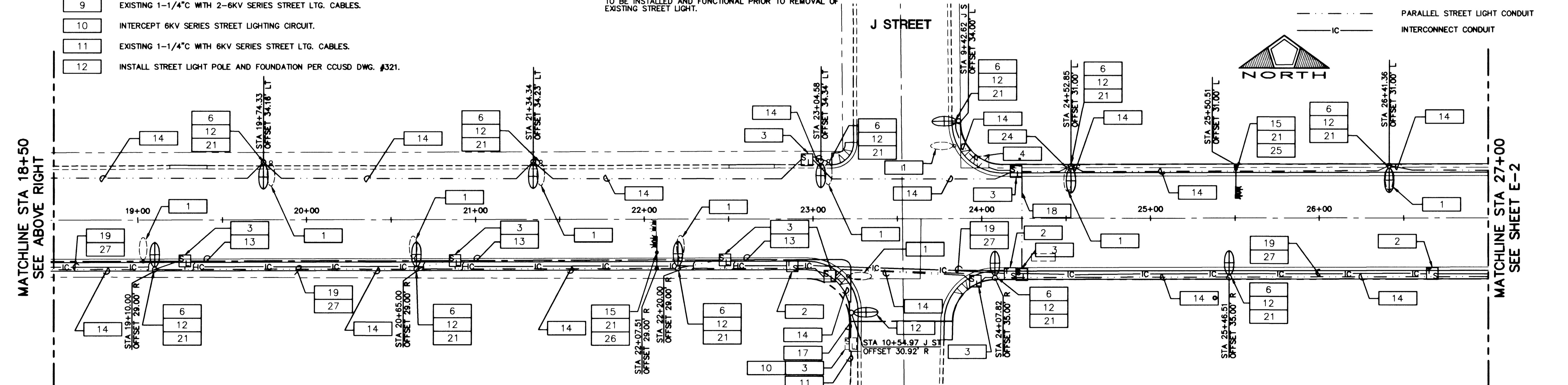
- 21 LOCATE POLE AT BACK PORTION OF SIDEWALK PER CCUSD DWG. #320.
- 22 LOCATE POLE IN OPEN AREA PER CCUSD DWG. #320.
- 23 EXTEND EXISTING CONDUIT TO NEW LOCATION. REPLACE WIRE TO THE NEXT POLE WITH THE SAME SIZE AS EXISTING.
- 24 RELOCATE EXISTING POLE MOUNTED METERED SERVICE PEDESTAL TO NEW POLE. PRIOR TO STARTING WORK, COORDINATE WITH NEVA EVANS @ 229-4727.
- 25 20' MAST ARM
- 26 25' MAST ARM
- 27 25 PAIR #22 AWG SHIELDED PER REA SPEC PE-39 INNERCONNECT CABLE IN CONDUIT

DOWN WAY LEGEND



MATCHLINE STA 18+50
SEE ABOVE RIGHT

MATCHLINE STA 27+00
SEE SHEET E-2



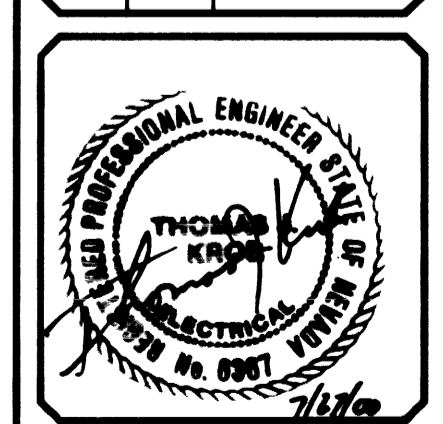
PULLBOX DETAIL - NORTH SIDE N ST. TO J ST.

TJKROB CONSULTING ENGINEERS, INC.
 7151 CASCADE VALLEY COURT SUITE 200
 LAS VEGAS, NEVADA 89128
 (702) 871-3621
 ELECTRICAL ENGINEERING

DATE	02/10/00
APP'D	
NO.	
DESCRIPTION	
SCALE	AS SHOWN
CHECKED BY	01/33/01/41
DESIGNED BY	
DRAWN BY	KALTA
DATE	02/10/00

PENTACORE
 CIVIL ENGINEERING • LAND SURVEYING • PLANNING
 CONSTRUCTION MANAGEMENT • ADA CONSULTING
 6763 WEST CHARLESTON BOULEVARD
 LAS VEGAS, NEVADA 89146 (702)256-0115

CITY OF LAS VEGAS
 WASHINGTON AVENUE
 ELECTRICAL PLAN
 STA 9+00 TO STA 27+00



SHEET **E-1**
 OF 59
 DWG. NO. 107-V3119

26501

Q:\1013310140\New Dwg\Elec\Elect.dwg Tue Jul 25 14:46:03 2000 RAT