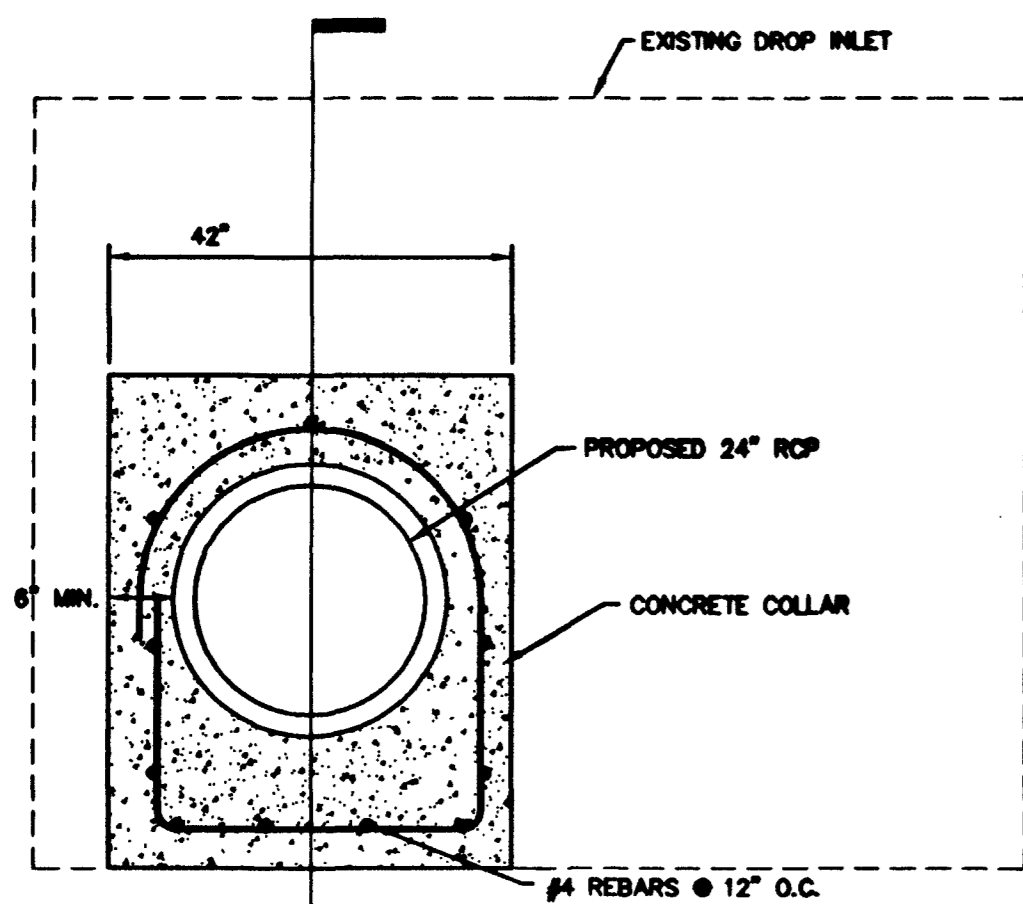
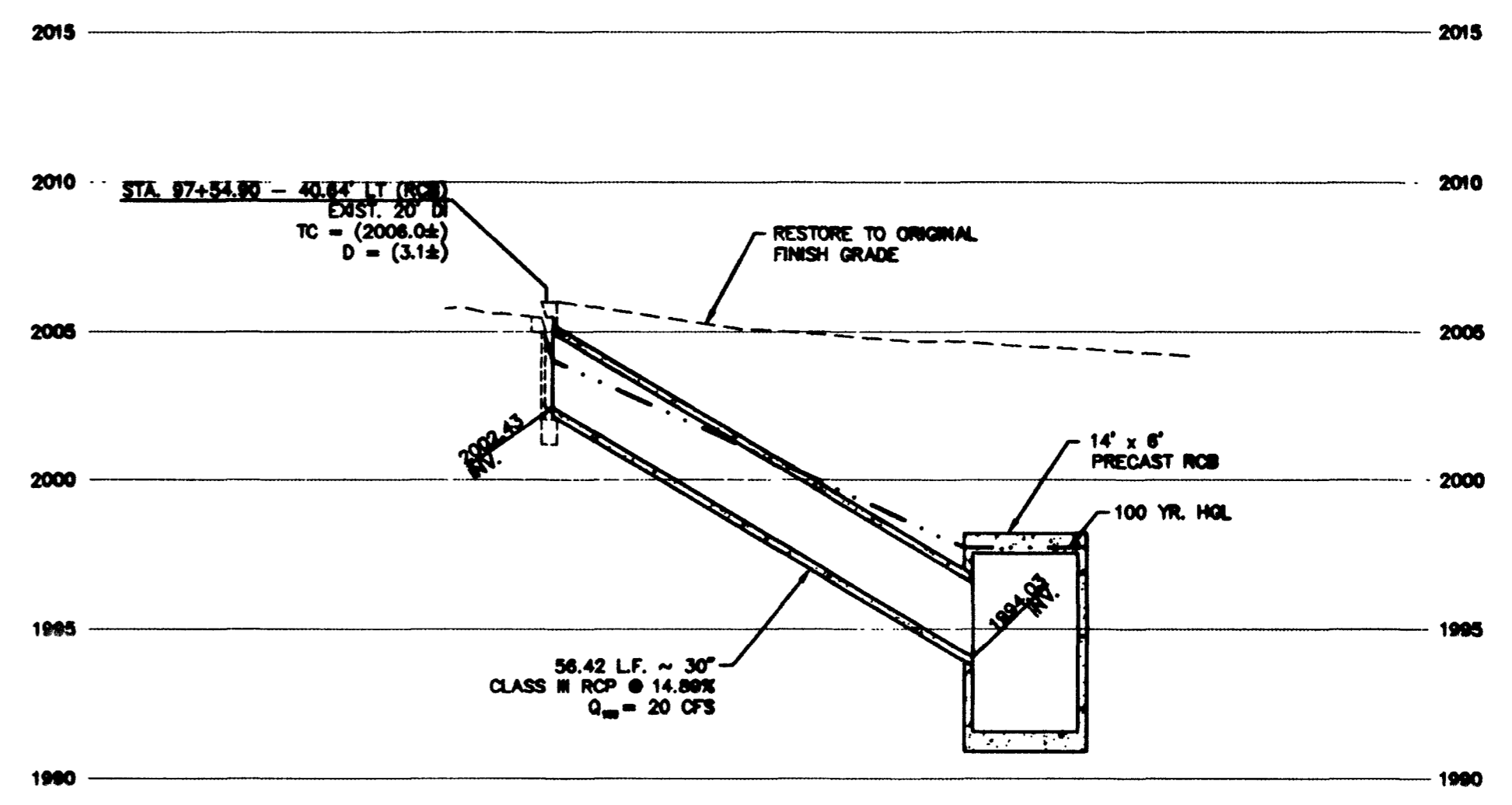


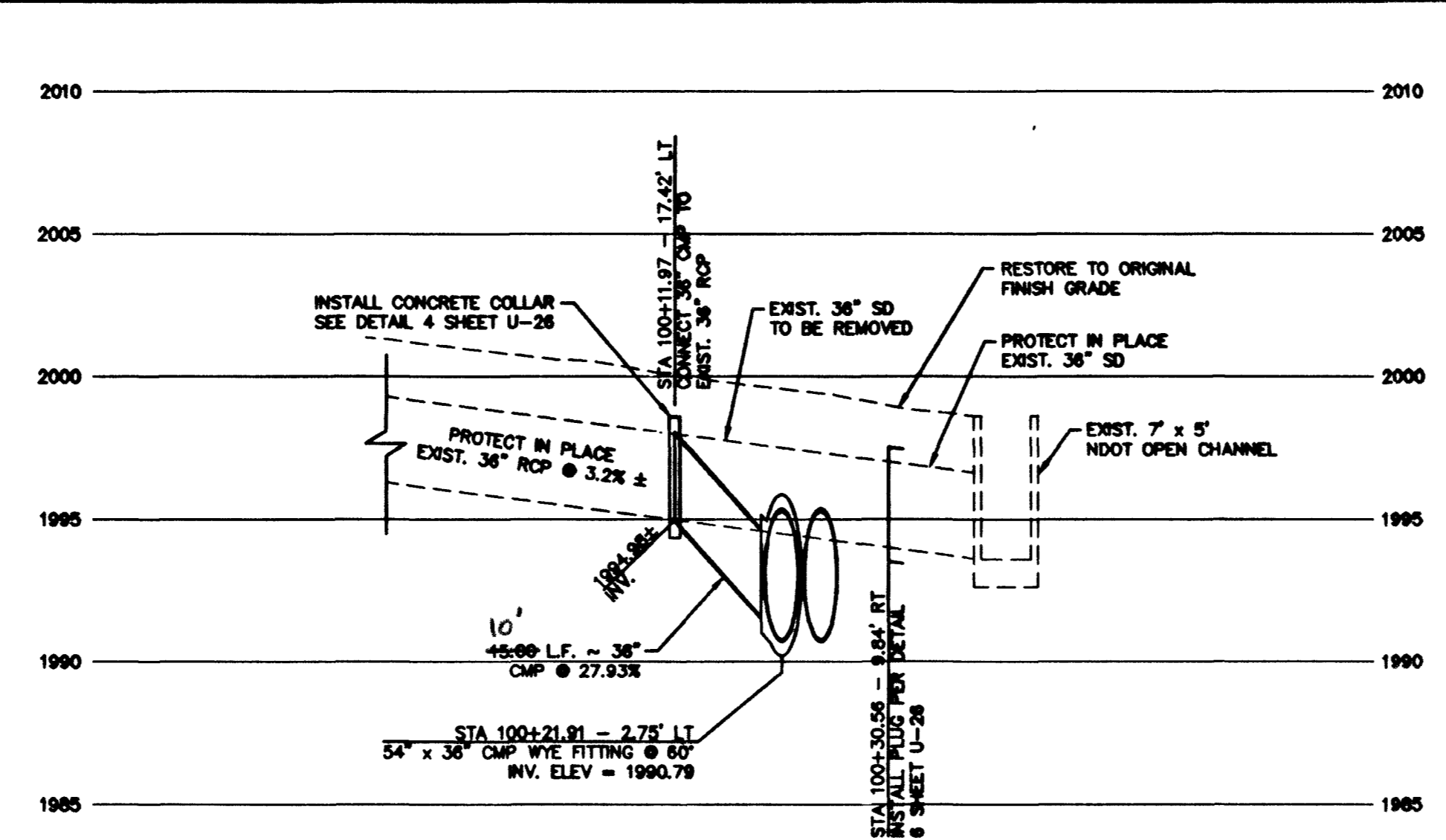
SECTION A
SCALE: NONE



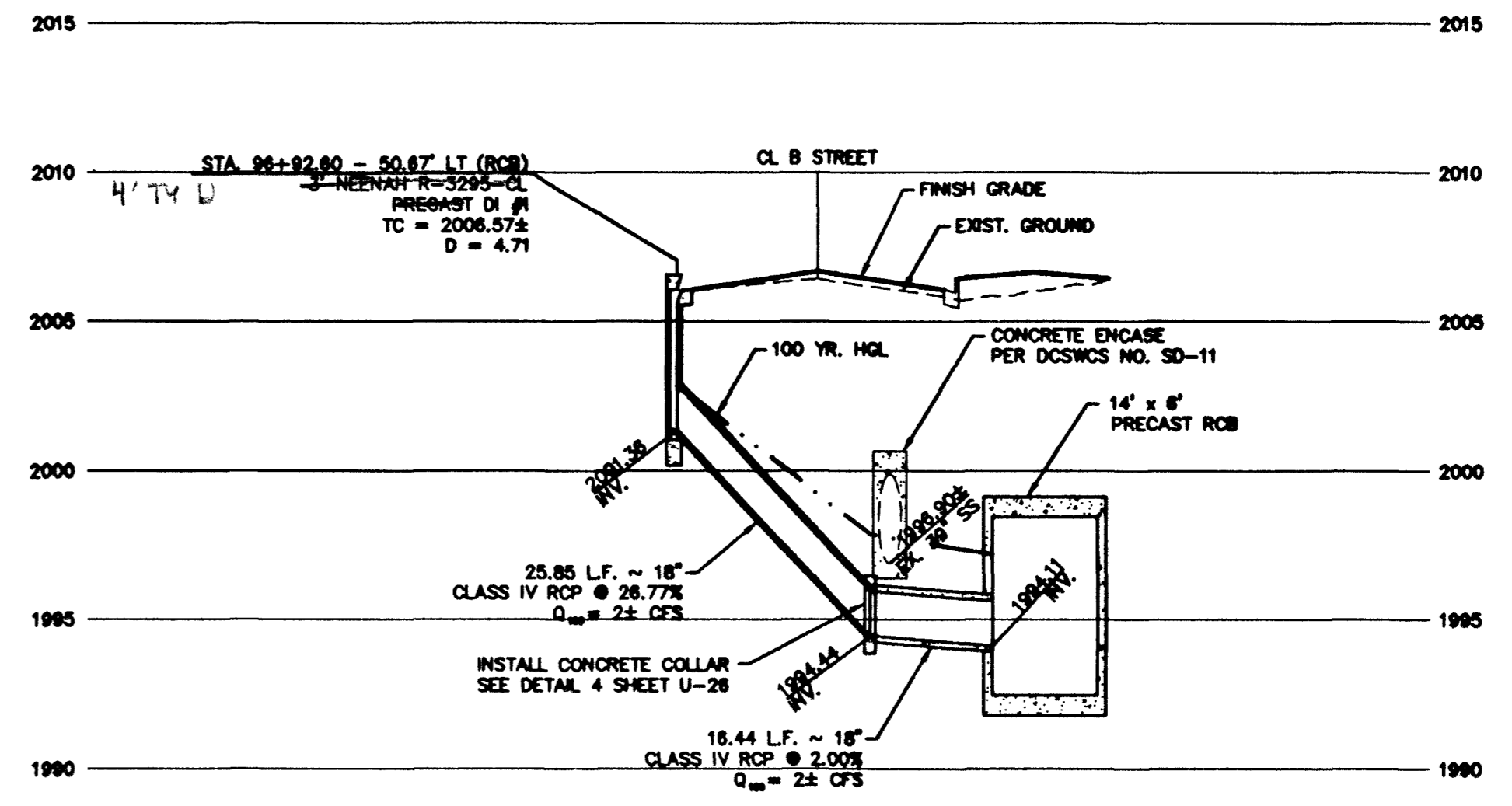
PIPE CONNECTION TO EXISTING DROP INLET DETAIL
SCALE: NONE



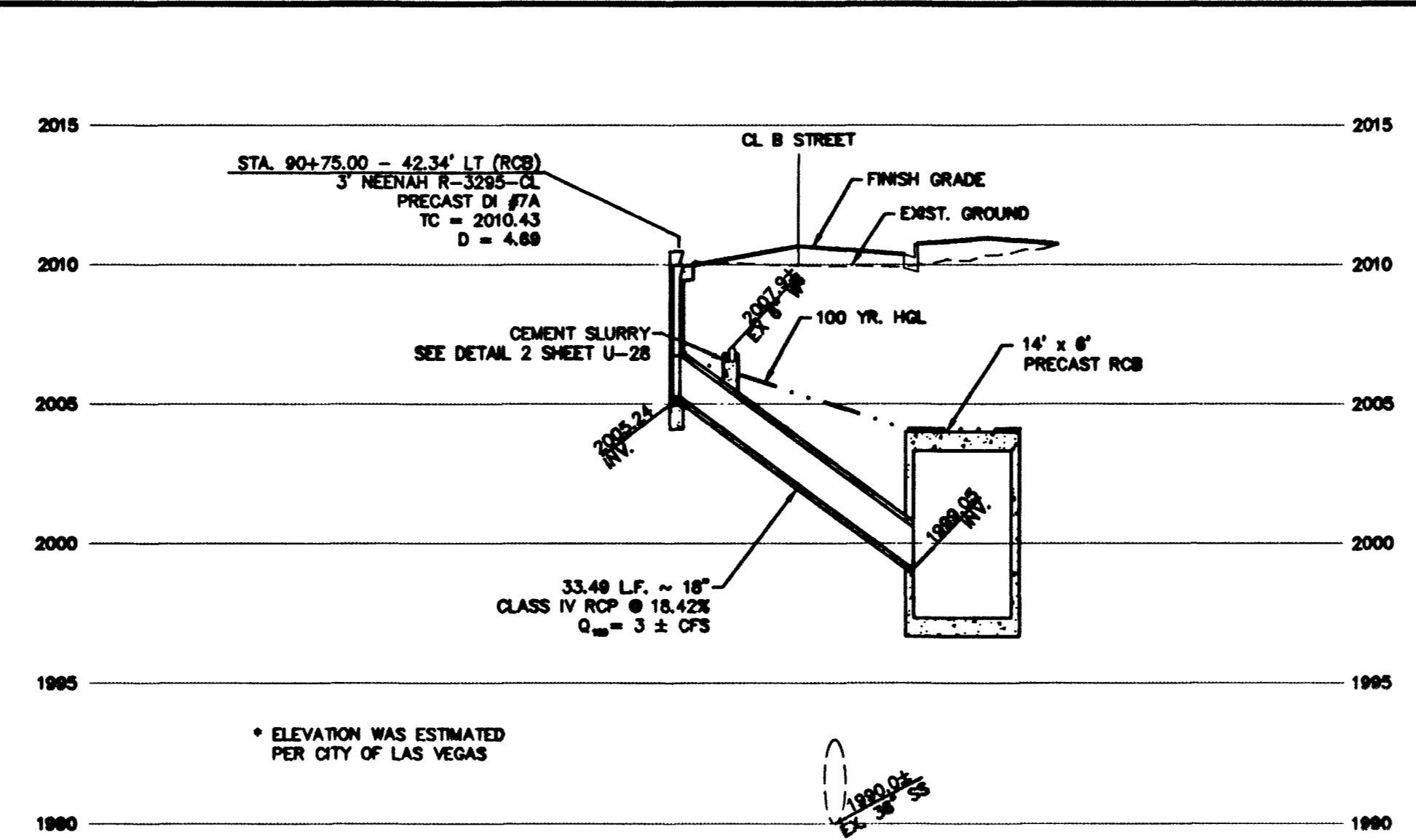
STA 97+83.51 - RCB
STORM DRAIN LATERAL PROFILE
SCALE: HORIZ. 1" = 20'
VERT. 1" = 5'



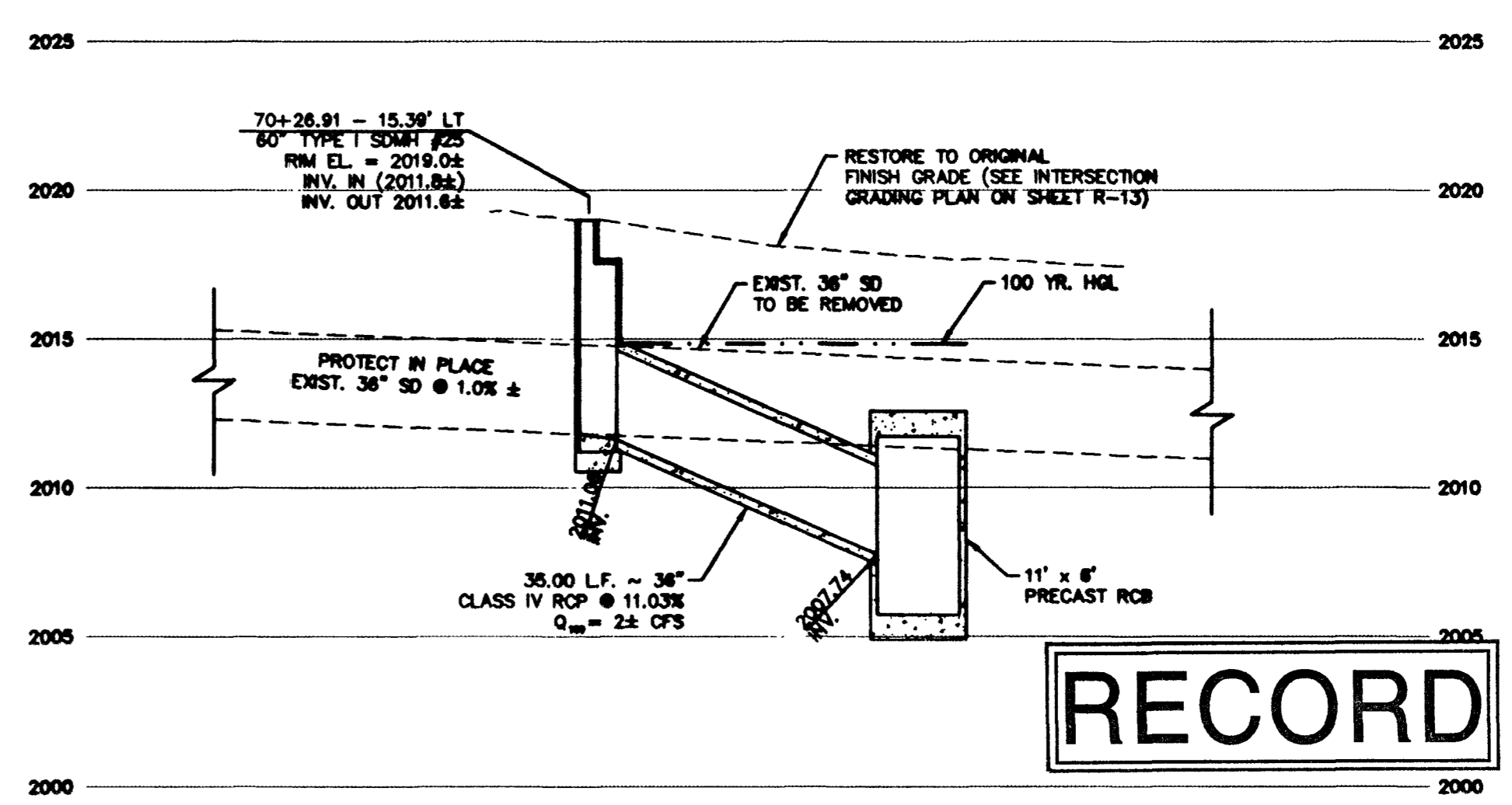
STA 100+05.42 - RCB
STORM DRAIN LATERAL PROFILE
SCALE: HORIZ. 1" = 20'
VERT. 1" = 5'



STA 96+93.87 - RCB
STORM DRAIN LATERAL PROFILE
SCALE: HORIZ. 1" = 20'
VERT. 1" = 5'



STA 90+75.00 - RCB
STORM DRAIN LATERAL PROFILE
SCALE: HORIZ. 1" = 20'
VERT. 1" = 5'



STA 70+60.62 - RCB
STORM DRAIN LATERAL PROFILE
SCALE: HORIZ. 1" = 20'
VERT. 1" = 5'

DATE:	02/10/20	APP'D:	
PH:	NW/ST	NO.:	DESCRIPTION
DRAWN BY:	JALWTA	NO.:	
DESIGNED BY:	JLBT	NO.:	
ADA CHECKED:	JLBT	NO.:	
JOB NO.:	01333741	NO.:	
SCALE:	AS SHOWN	NO.:	

PENTACORE
CIVIL ENGINEERING - LAND SURVEYING - PLANNING
CONSTRUCTION MANAGEMENT - ADA CONSULTING
6763 WEST CHARLESTON BOULEVARD
LAS VEGAS, NEVADA 89146 (702)258-0115

CITY OF LAS VEGAS
WASHINGTON AVENUE
STORM DRAIN LATERAL PROFILES - 6

PROFESSIONAL ENGINEER - STATE OF NEVADA
MYRON R. [Signature]
No. 2646
2/25/10

G:\01333741\01\NEW\DWGS\UTILITY\SLAT-6.DWG

48827

Amiee Craft
LAS VEGAS VALLEY WATER DISTRICT
DATE: 2-17-20

RECORD