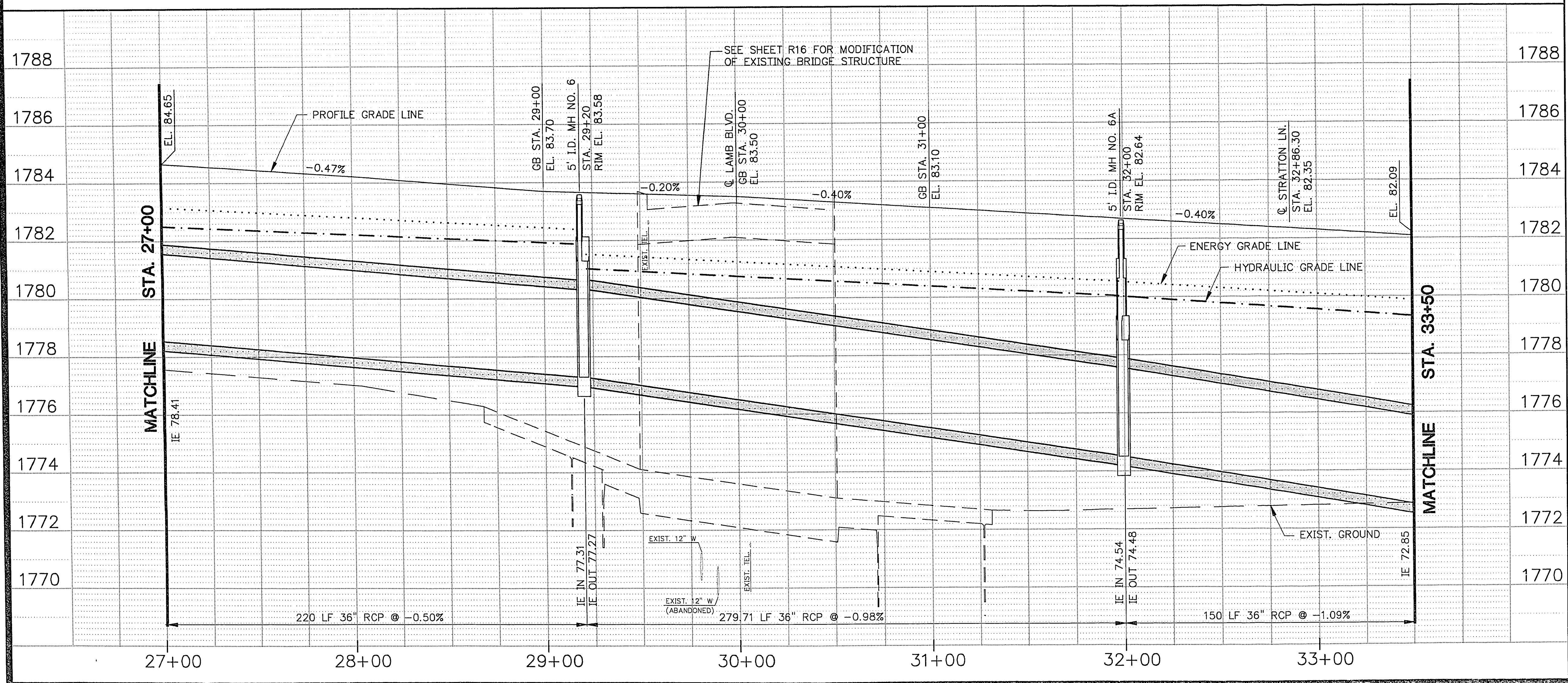


- NOTES**
- SEE SHEET D12 & D13 FOR STORM DRAIN LATERALS.
 - STATIONS AND OFFSETS ARE TO BACK OF CURB AT CENTER OF INLET, AND TO CENTER OF MANHOLE.
 - STORM DRAIN MANHOLES ARE TYPE I MANHOLES PER U.S.D. NO. 405, UNLESS OTHERWISE NOTED.
 - STORM DRAIN PIPE IS CLASS III RCP, UNLESS OTHERWISE NOTED.
 - SEE SHEETS R1 THRU R23 FOR ROADWAY IMPROVEMENTS AND MEDIAN GEOMETRY.
 - SEE SHEET G2 FOR CONCRETE ENCASEMENT REQUIREMENTS FOR WATER-SEWER/STORM LINE CROSSING.



DATE		REVISIONS	
DESIGNED BY: PRS	APPROVED BY: JKS	DATE: JUN. 25, 1993	PROJECT NO. 49007
URS CONSULTANTS, INC. Los Vegas, Nevada			
		DEPARTMENT OF PUBLIC WORKS PROJECT: WASHINGTON AVENUE ROADWAY PROJECT SHEET: STORM DRAIN PLAN AND PROFILE STA. 27+00 TO STA. 33+50	
DRAWING NO. 107-V1982		D 4	