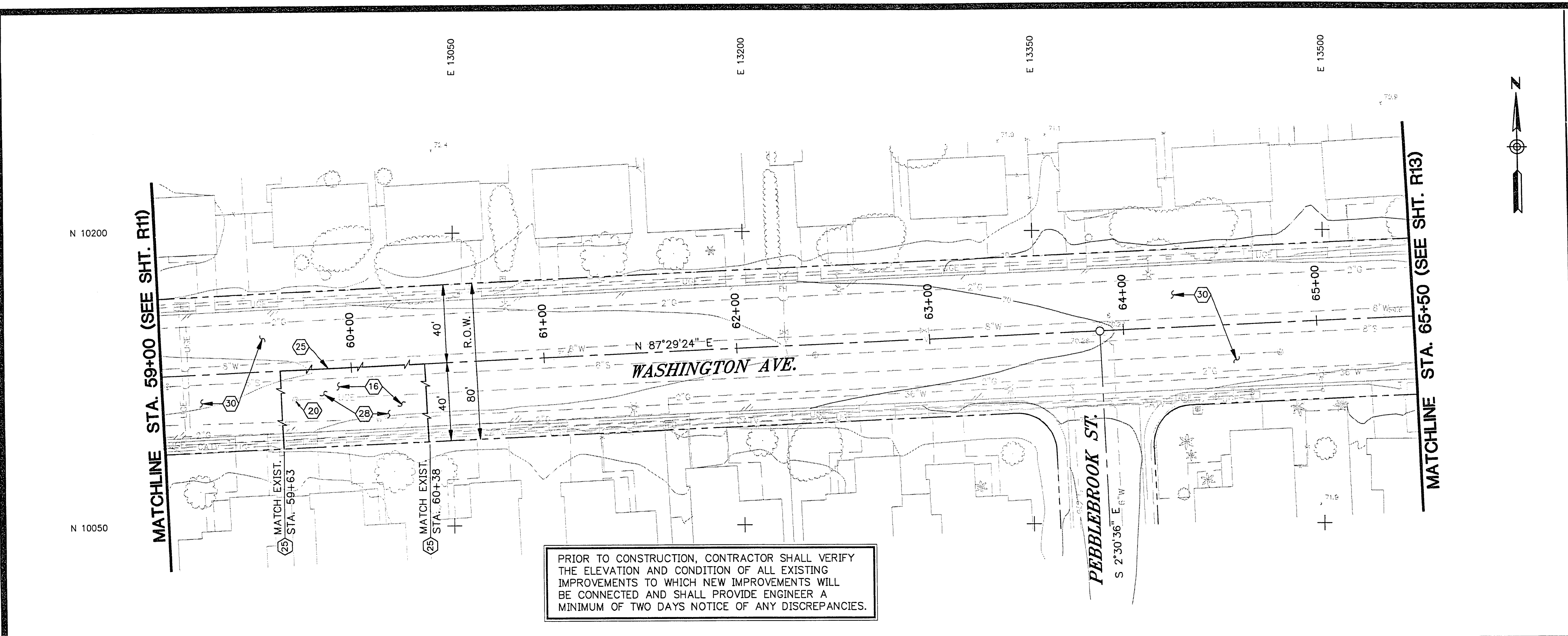
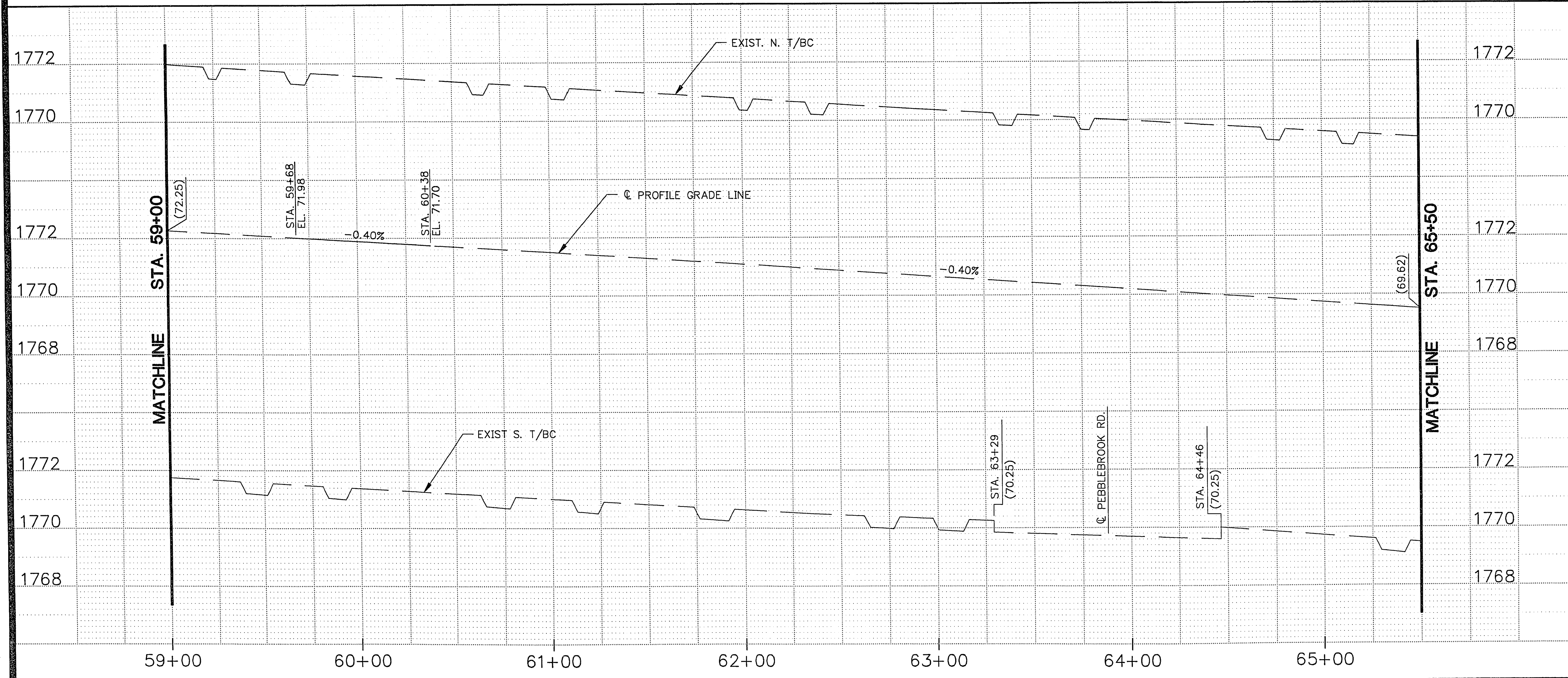


URS/WREV-R12.dwg/6-17-93/kpc



PRIOR TO CONSTRUCTION, CONTRACTOR SHALL VERIFY THE ELEVATION AND CONDITION OF ALL EXISTING IMPROVEMENTS TO WHICH NEW IMPROVEMENTS WILL BE CONNECTED AND SHALL PROVIDE ENGINEER A MINIMUM OF TWO DAYS NOTICE OF ANY DISCREPANCIES.



- ### CONSTRUCTION NOTES
- 1 REMOVE EXISTING CONCRETE CURB AND GUTTER.
 - 2 REMOVE EXISTING CONCRETE SIDEWALK.
 - 3 REMOVE THE TOP 3' OF THE CONC. LINING AND PLACE FILL IN EXISTING CHANNEL.
 - 4 INSTALL CONCRETE SIDEWALK PER U.S.D. NO. 234.
 - 5 INSTALL WHEELCHAIR RAMP PER U.S.D. NO. 235 (CASE I).
 - 6 INSTALL TYPE A TACK ON ISLAND CURB PER U.S.D. NO. 220-A.
 - 7 INSTALL 'L' TYPE CURB & GUTTER PER U.S.D. NO. 216.
 - 8
 - 9 REMOVE AND REPLACE EXISTING SIDEWALK AND CURB & GUTTER.
 - 10 ABANDON SANITARY SEWER LINES AND MANHOLES PER C.L.V. STANDARDS.
 - 11 INSTALL CONCRETE TACK ON ISLAND PER U.S.D. NO. 220-A.
 - 12 INSTALL 15' RESIDENTIAL DRIVEWAY PER U.S.D. NO.223.
 - 13 INSTALL 18' RESIDENTIAL DRIVEWAY PER U.S.D. NO.223.
 - 14 INSTALL 23' COMMERCIAL DRIVEWAY PER U.S.D. NO.224.
 - 15 INSTALL 32' COMMERCIAL DRIVEWAY PER U.S.D. NO.224.
 - 16 REMOVE EXISTING AC PAVEMENT.
 - 17 REMOVE EXISTING CROSS GUTTER.
 - 18 REMOVE EXISTING CONCRETE BARRIER.
 - 19 REMOVE AND RELOCATE EXISTING SIGNS AND MARKERS.
 - 20 ADJUST MANHOLE RIM AND CONSTRUCT CONCRETE COLLAR PER U.S.D. NO. 40B.
 - 21 ADJUST VALVE BOX AND CONSTRUCT CONCRETE COLLAR PER U.S.D. NO. 517.
 - 22 EXISTING TELEPHONE MANHOLE TO BE ADJUSTED TO FINISH GRADE.
 - 23 INSTALL CROSS GUTTER PER MODIFIED U.S.D. NO. 228.
 - 24 EXISTING POWER POLE TO BE RELOCATED BY NEVADA POWER COMPANY.
 - 25 SAWCUT EXISTING AC PAVEMENT.
 - 26 SALVAGE FLOW MONITORING DEVICE.
 - 27 RELOCATE EXISTING LIGHT POLE.
 - 28 NEW STRUCTURAL PAVEMENT SECTION SEE SHT. R2 FOR DETAIL.
 - 29 3/4" ROTOMILL AND OPEN GRADE WITHIN CURB RETURN.
 - 30 APPLY SEAL COAT.
 - 31 ROTOMILL 2" OFF EXIST. PAVEMENT SEE SHT. R2 FOR SECTION AND DETAIL.
 - 32 INSTALL 2" ROCK SURFACING.
 - 33 INSTALL 20' COMMERCIAL DRIVEWAY PER U.S.D. NO. 225.
 - 34 INSTALL A.C. PAVEMENT.

NOTES

1. FOR ROADWAY TYPICAL SECTION SEE SHEETS R1 AND R2.
2. FOR A.C. PAVEMENT PLAN SEE SHEETS G4 AND G5.
3. FOR STREET LIGHT PLAN SEE SHEETS E1 THRU E8.

DATE					
REVISIONS					
SCALE	DESIGNED BY: PPS	APPROVED BY: JKS	HORIZ. 1"=30'	VERT. 1"=2'	
DRAWN BY: GPR/AFK	REVIEWED BY: JKS	DATE: JUN. 25, 1993	PROJECT NO. 43007	URS CONSULTANTS, INC. Las Vegas, Nevada	
DEPARTMENT OF PUBLIC WORKS			PROJECT: WASHINGTON AVENUE ROADWAY PROJECT		
SHEET: ROADWAY AND PROFILE PLAN AND PROFILE STA. 59+00 TO STA. 65+50					
DRAWING NO. 107-V1982			R/2		