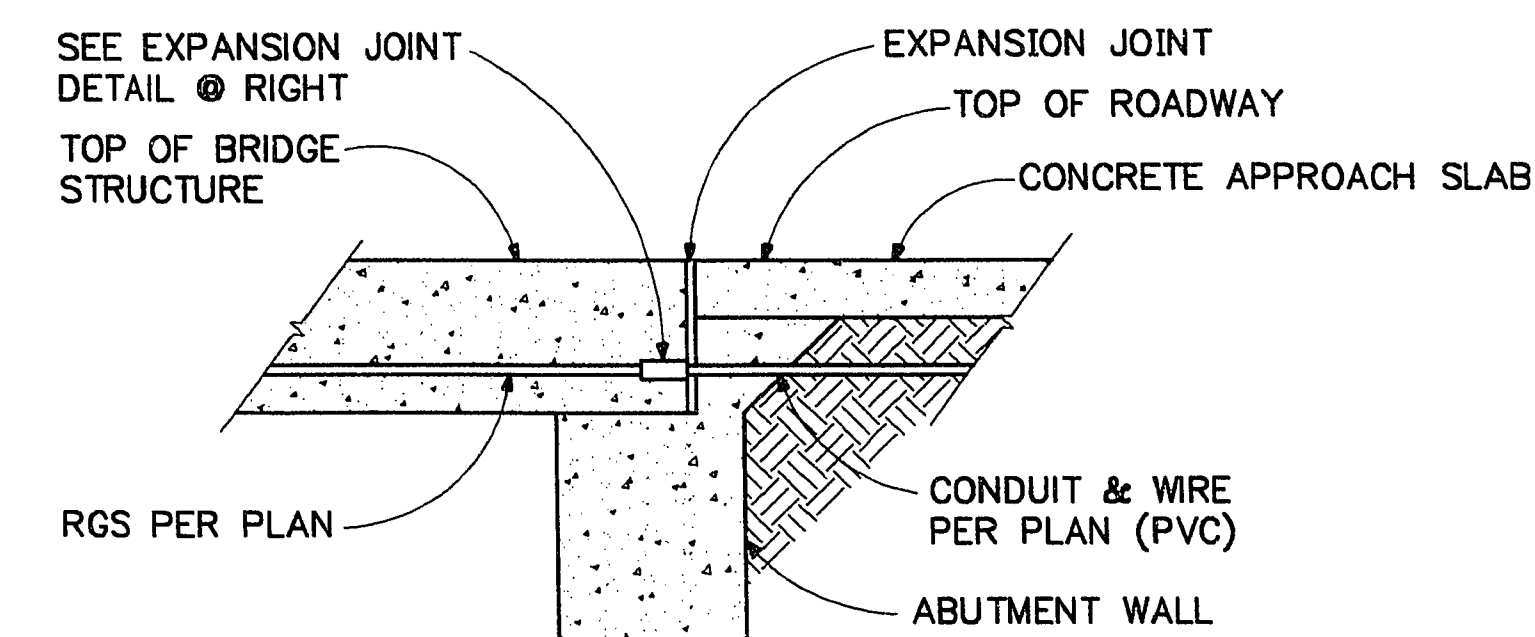


ELECTRICAL SYMBOL LIST			ABBREVIATIONS	
NEW	EXISTING	DESCRIPTION	ABBR.	DESCRIPTION
		STREET LIGHTING LUMINAIRE, POLE & BASE	ALT	ALTERNATE
		PULLBOX, SIZE AS NOTED	AL	ALUMINUM
		TRAFFIC SIGNAL CONTROLLER	AWG	AMERICAN WIRE GAUGE
		CONDUIT & WIRE RUN AS NOTED	A	AMPERE(S)
		DETECTOR LOOP	CKT	CIRCUIT
		PADMOUNT SERVICE	CKT BKR	CIRCUIT BREAKER
		TRAFFIC SIGNAL HEAD WITH BACKPLATE	COND	CONDUCTOR
		PROGRAMMED VISIBILITY TRAFFIC SIGNAL HEAD WITH BACKPLATE	C	CONDUIT
		PEDESTRIAN SIGNAL HEAD	CONN	CONNECT
		PEDESTRIAN PUSHBUTTON	CU	COPPER
		INTERNALLY ILLUMINATED STREET NAME SIGN	DISC	DISCONNECT
		TRAFFIC SIGNAL MAST ARM	E.C.	ELECTRICAL CONTRACTOR
		UTILITY POLE	EXIST'G	EXISTING
			F	FUSE
			GRD	GROUND
			KVAR	KILOVAR(S)
			KVA	KILOVOLT AMPERE(S)
			KW	KILOWATT(S)
			LTG	LIGHTING
			MH	MANHOLE
			MCM	THOUSAND CIRCULAR MIL(S)
			NC	NORMALLY CLOSED
			NO	NORMALLY OPEN
			NTS	NOT TO SCALE
			N.I.C.	NOT IN CONTRACT
			PC	PHOTOCELL
			PP	POWER POLE
			PT	POINT
			ST	STREET
			TYP	TYPICAL
			UG	UNDERGROUND
			VAR	REACTIVE VOLT AMPERES
			V	VOLT(S)
			VA	VOLTAMP(S)
			W	WATT(S)
			WP	WEATHERPROOF
			XFMR	TRANSFORMER

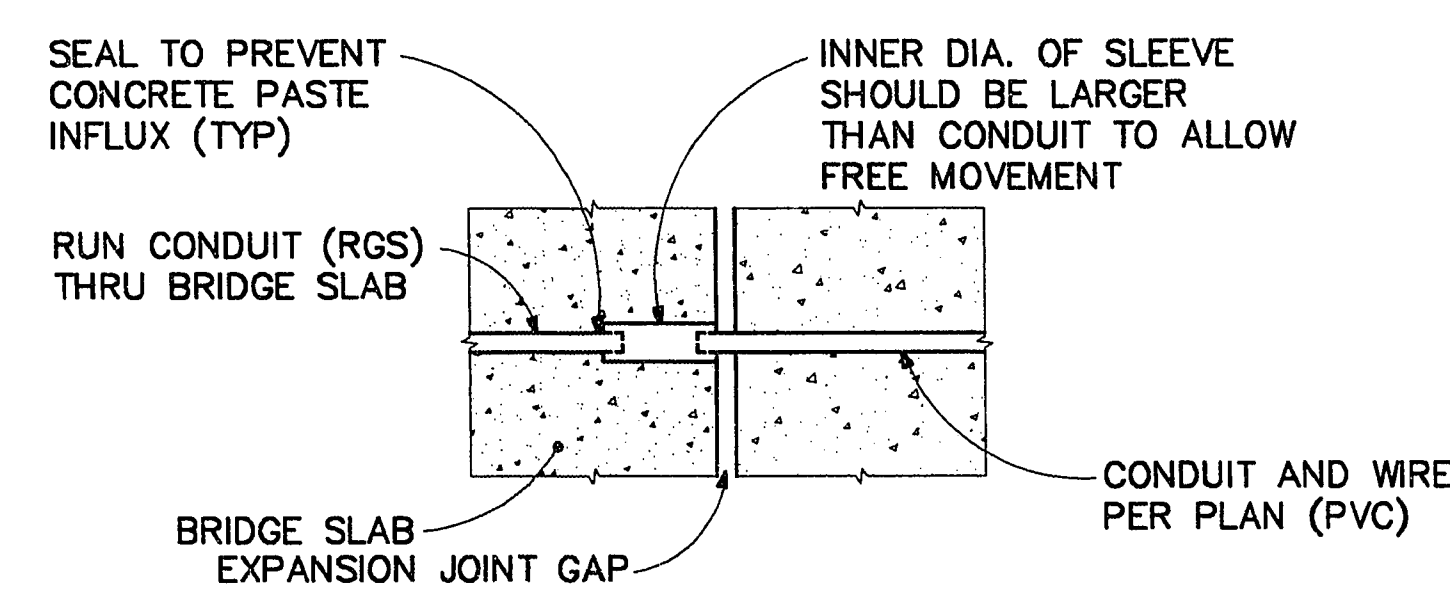
GENERAL NOTES

- PRIOR TO BEGINNING EXCAVATION, VERIFY LOCATIONS OF EXISTING & NEW UNDERGROUND UTILITIES, PIPING, ETC. PROVIDE EXCAVATION, BACKFILL, SUPPORT, SAWCUTTING, PATCHING, PAVING, ETC. AS REQUIRED. BACKFILL EXCAVATIONS TO 90 PERCENT COMPACTION & PATCH TO MATCH EXISTING CONDITIONS.
- STREET LIGHTING & SIGNAL SYSTEM OUTAGES SHALL BE PERMITTED ONLY AT TIMES APPROVED BY THE CITY OF LAS VEGAS IN WRITING. WORK WHICH MAY RESULT IN AN ACCIDENTAL OUTAGE SHALL BE PERFORMED WITH THE GOVERNING ENTITY ADVISED OF SUCH WORK.
- ALL DIRT & DEBRIS SHALL BE REMOVED FROM ALL MANHOLES & PULLBOXES. DISPOSE OF AS DIRECTED BY THE CITY OF LAS VEGAS.
- DO NOT SCALE DRAWINGS. VERIFY DIMENSIONS IN FIELD PRIOR TO BEGINNING WORK.
- FINAL CONNECTIONS TO EQUIPMENT SHALL BE PER MANUFACTURER'S APPROVED WIRING DIAGRAM, DETAILS & INSTRUCTIONS. IT SHALL BE THE CONTRACTOR'S RESPONSIBILITY TO PROVIDE MATERIALS & EQUIPMENT COMPATIBLE WITH EQUIPMENT ACTUALLY SUPPLIED.
- CONTRACTOR SHALL VISIT JOB SITE PRIOR TO BID & VERIFY THAT CONDITIONS ARE AS INDICATED. CONTRACTOR SHALL INCLUDE IN HIS BID COSTS REQUIRED TO MAKE HIS WORK MEET EXISTING CONDITIONS.
- ANY EXISTING EQUIPMENT BEING REMOVED & NOT RE-USED UNDER THIS CONTRACT SHALL BE RETURNED TO THE CITY OF LAS VEGAS CORPORATE YARDS AT 3100 E. BONANZA RD.
- ALL PLACEMENTS OF NEW AND RELOCATED STREET LIGHTING LUMINAIRES (POLE & BASES), TRAFFIC SIGNAL CONTROLLERS, SERVICE PEDESTALS, TRAFFIC CONTROL EQUIPMENT AND INTERCONNECT JUNCTION CABINETS SHALL PROVIDE 36" MINIMUM CLEAR SIDEWALK WIDTH.
- STREET LIGHT INSTALLATION WHERE NO SIDEWALK OCCURS SHALL PROVIDE FOUNDATION AT FUTURE FINISHED SIDEWALK ELEVATION. PROVIDE 60" DEEP FOUNDATION AND SLOPE COMPACTED FILL AWAY FROM FOUNDATION TO EXISTING FINISHED GRADE.



TYPICAL CONDUIT AT BRIDGE DETAIL

SCALE NONE



TYPICAL CONDUIT EXPANSION JOINT DETAIL

SCALE NONE

DATE				
REVISIONS				
SCALE (H) NO SCALE	SCALE (V)	W.A. # W0000	DESIGN BY JAT/DEF	
FED. BK. # N/A	DATE NOVEMBER 1992			
URS CONSULTANTS, INC. Las Vegas, Nevada				
DEPARTMENT OF PUBLIC WORKS				
WASHINGTON AVENUE ROADWAY PROJECT				
ABBREVIATIONS, GENERAL NOTES AND LEGEND				
92001.00	DRAWING NO. 107-V1982	E 1		

HARRIS ENGINEERS, INC.
MECHANICAL/ELECTRICAL CONSULTANTS
2785 East Desert Inn Road, Suite 280
Las Vegas, Nevada 89121
702/796-0228