

REFERENCES

- R1 FINAL MAP THE VILLAGE AT WASHINGTON BOOK 28 PAGE 09 OF PLATS
- R2 RECORD OF SURVEY FILE 35 PAGE 15
- R3 PARCEL MAP FILE 35 PAGE 73
- R4 FINAL MAP WASHINGTON SQUARE UNIT No. 7 BOOK 26 PAGE 49 OF PLATS
- R5 DESCRIPTION CONTAINED IN BOOK 382, DOCUMENT NO. 341210, DATED 11-21-1973, BEING THE 150' WIDE RIGHT OF WAY GRANT FOR DRAINAGE PURPOSES TO THE CITY OF LAS VEGAS.
- R6 GRANT OF PUBLIC RIGHT OF WAY CONTAINED IN BOOK 146, DOC. NO. 119967, DATED 12-05-1957

CURVE TABLE

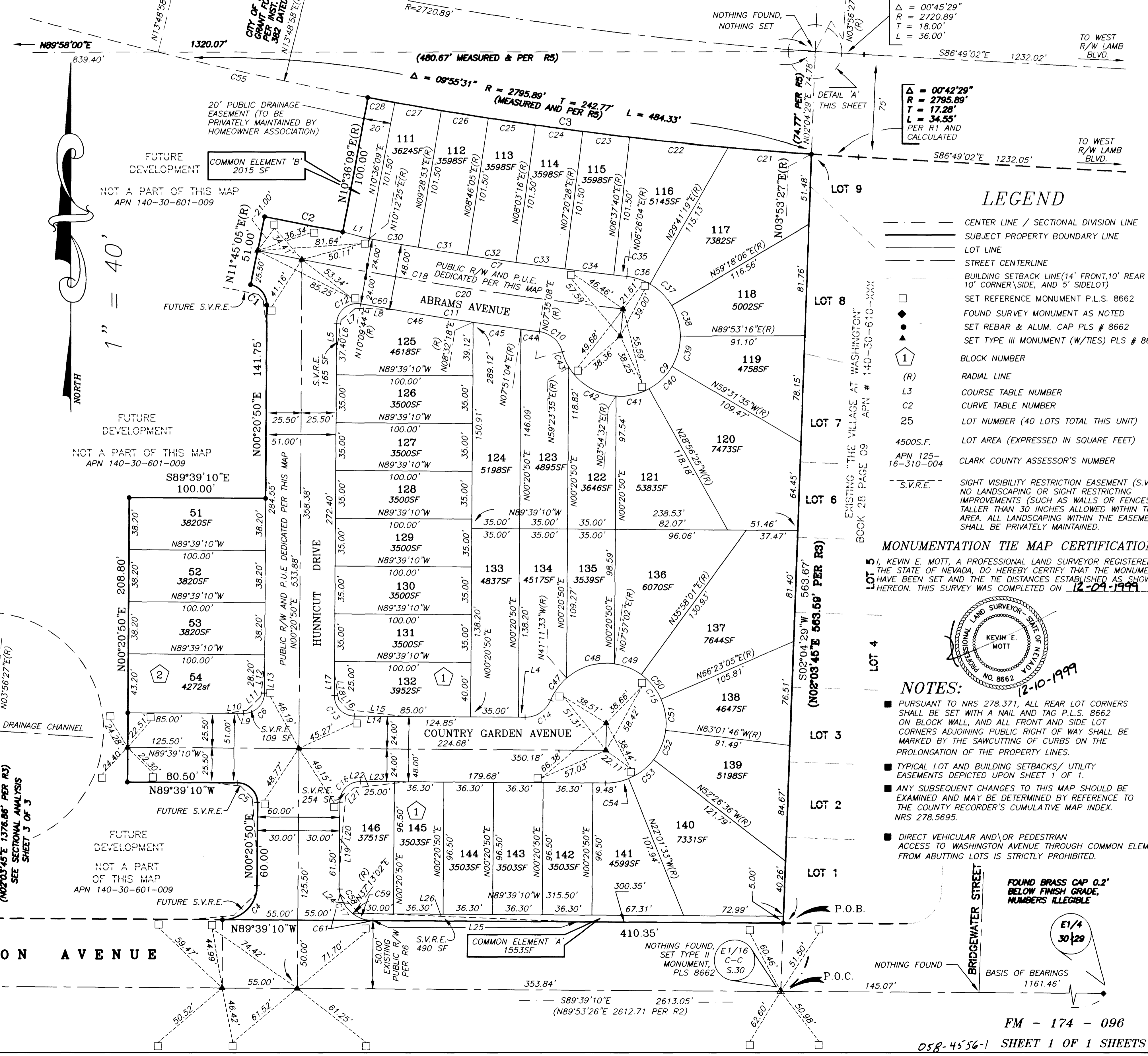
CURVE	RADIUS	LENGTH	TANGENT	DELTA
C1	15.00'	20.58'	12.28'	78°35'45"
C2	2895.89'	58.07'	29.04'	01°08'56"
C3	2795.89'	327.52'	163.95'	06°42'42"
C4	25.00'	39.27'	25.00'	90°00'00"
C5	15.00'	23.56'	15.00'	90°00'00"
C6	15.00'	23.56'	15.00'	90°00'00"
C7	2897.39'	190.77'	95.42'	03°46'21"
C9	44.00'	190.87'	64.56'	248°33'09"
C10	20.00'	23.53'	13.34'	67°24'05"
C11	2945.39'	132.46'	66.24'	02°34'36"
C12	15.00'	26.13'	17.82'	99°48'54"
C13	15.00'	23.56'	15.00'	90°00'00"
C14	20.00'	23.73'	13.48'	67°58'32"
C15	44.00'	190.43'	65.26'	247°58'32"
C16	15.00'	23.56'	15.00'	90°00'00"
C17	25.00'	39.27'	25.00'	90°00'00"
C18	2921.39'	271.09'	135.64'	05°19'01"
C19	2921.39'	33.11'	16.55'	00°38'58"
C20	2921.39'	237.99'	119.06'	04°40'03"
C21	2795.89'	61.30'	30.65'	01°15'22"
C22	2795.89'	72.26'	36.13'	01°28'51"
C23	2795.89'	34.81'	17.41'	00°42'48"
C24	2795.89'	34.81'	17.41'	00°42'48"
C25	2795.89'	34.81'	17.41'	00°42'48"
C26	2795.89'	34.81'	17.41'	00°42'48"
C27	2795.89'	34.71'	17.35'	00°42'40"
C28	2795.89'	20.00'	10.00'	00°24'35"
C30	2897.39'	36.69'	18.35'	00°43'32"
C31	2897.39'	36.08'	18.04'	00°42'48"
C32	2897.39'	36.08'	18.04'	00°42'48"
C33	2897.39'	36.08'	18.04'	00°42'48"
C34	2897.39'	36.08'	18.04'	00°42'48"
C35	2897.39'	36.08'	18.04'	00°42'48"
C36	44.00'	17.86'	9.05'	23°15'15"
C37	44.00'	22.74'	11.63'	29°36'47"
C38	44.00'	23.49'	12.03'	30°35'10"
C39	44.00'	23.49'	12.03'	30°35'10"
C40	44.00'	23.49'	12.03'	30°35'10"
C41	44.00'	25.23'	12.97'	32°50'58"
C42	44.00'	42.61'	23.14'	55°29'03"
C43	44.00'	11.98'	6.02'	15°35'38"
C44	2945.39'	13.65'	6.83'	00°15'56"
C45	2945.39'	35.33'	17.67'	00°41'14"
C46	2945.39'	83.47'	41.74'	01°37'26"
C47	44.00'	20.30'	10.33'	26°26'09"
C48	44.00'	37.74'	20.12'	49°08'35"
C49	44.00'	21.52'	10.98'	28°00'59"
C50	44.00'	23.36'	11.96'	30°25'03"
C51	44.00'	23.49'	12.03'	30°35'10"
C52	44.00'	23.49'	12.03'	30°35'10"
C53	44.00'	23.36'	11.96'	30°25'03"
C54	44.00'	17.18'	8.70'	22°22'23"
C55	2795.89'	156.82'	78.43'	03°12'49"
C58	25.00'	23.18'	12.50'	53°07'48"
C59	25.00'	16.09'	8.33'	36°52'12"
C60	2945.39'	24.17'	12.09'	00°28'13"
C61	25.00'	33.57'	19.87'	76°56'53"

COURSE TABLE

COURSE	DIRECTION	DISTANCE
L1	N75°18'18"W	20.05'
L2	N06°26'04"E	20.00'
L3	N00°20'50"E	20.00'
L4	N89°39'10"W	4.85'
L5	N00°20'50"E	21.13'
L6	N07°49'19"E	23.95'
L7	N50°15'17"E	13.79'
L8	N88°06'35"W	27.74'
L9	N89°39'10"W	14.00'
L10	N82°29'38"E	16.39'
L11	N45°20'50"E	14.27'
L12	N06°31'03"E	24.81'
L13	N00°20'50"E	22.00'
L14	N89°39'10"W	36.00'
L15	N82°56'35"W	41.08'
L16	N44°39'10"W	10.07'
L17	N00°20'50"E	16.00'
L18	N08°48'54"W	19.32'
L19	N00°20'50"E	51.00'
L20	N04°40'46"E	55.34'
L21	N45°20'50"E	8.55'
L22	N83°30'16"E	40.06'
L23	N89°39'10"W	35.00'
L24	N44°39'10"W	19.59'
L25	N89°39'10"W	149.00'
L26	N87°40'40"W	159.59'

WASHINGTON & SANDHILL - UNIT 1

BEING A PORTION OF THE SOUTH HALF (S1/2) OF THE SOUTHWEST QUARTER (SW1/4) OF THE NORTHEAST QUARTER (NE1/4) OF SECTION 30, T.20S., R.62E., M.D.M., CITY OF LAS VEGAS, CLARK COUNTY, NEVADA



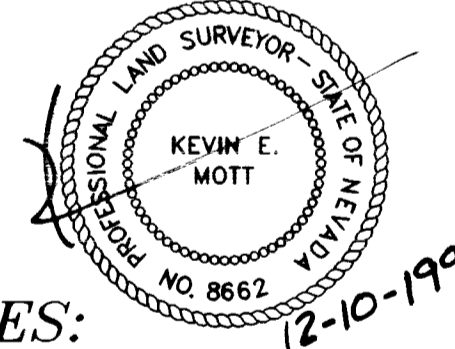
Δ = 00°45'29"
R = 2720.89'
T = 18.00'
L = 36.00'

Δ = 00°42'29"
R = 2795.89'
T = 17.28'
L = 34.55'
PER R1 AND CALCULATED

LEGEND

- CENTER LINE / SECTIONAL DIVISION LINE
- SUBJECT PROPERTY BOUNDARY LINE
- LOT LINE
- STREET CENTERLINE
- BUILDING SETBACK LINE (14' FRONT, 10' REAR YARD, 10' CORNER SIDE, AND 5' SIDELOT)
- SET REFERENCE MONUMENT P.L.S. 8662
- FOUND SURVEY MONUMENT AS NOTED
- ▲ SET REBAR & ALUM. CAP PLS # 8662
- ▲ SET TYPE III MONUMENT (W/TIES) PLS # 8662
- ① BLOCK NUMBER
- (R) RADIAL LINE
- L3 COURSE TABLE NUMBER
- C2 CURVE TABLE NUMBER
- 25 LOT NUMBER (40 LOTS TOTAL THIS UNIT)
- 4500S.F. LOT AREA (EXPRESSED IN SQUARE FEET)
- APN 125-16-310-004 CLARK COUNTY ASSESSOR'S NUMBER
- S.V.R.E. --- SIGHT VISIBILITY RESTRICTION EASEMENT (S.V.R.E.) NO LANDSCAPING OR SIGHT RESTRICTING IMPROVEMENTS (SUCH AS WALLS OR FENCES) TALLER THAN 30 INCHES ALLOWED WITHIN THE AREA. ALL LANDSCAPING WITHIN THE EASEMENT SHALL BE PRIVATELY MAINTAINED.

MONUMENTATION TIE MAP CERTIFICATION
I, KEVIN E. MOTT, A PROFESSIONAL LAND SURVEYOR REGISTERED IN THE STATE OF NEVADA, DO HEREBY CERTIFY THAT THE MONUMENTS HAVE BEEN SET AND THE TIE DISTANCES ESTABLISHED AS SHOWN HEREON. THIS SURVEY WAS COMPLETED ON 12-09-1999.



NOTES:

- PURSUANT TO NRS 278.371, ALL REAR LOT CORNERS SHALL BE SET WITH A NAIL AND TAG P.L.S. 8662 ON BLOCK WALL, AND ALL FRONT AND SIDE LOT CORNERS ADJOINING PUBLIC RIGHT OF WAY SHALL BE MARKED BY THE SAWCUTTING OF CURBS ON THE PROLONGATION OF THE PROPERTY LINES.
- TYPICAL LOT AND BUILDING SETBACKS / UTILITY EASEMENTS DEPICTED UPON SHEET 1 OF 1.
- ANY SUBSEQUENT CHANGES TO THIS MAP SHOULD BE EXAMINED AND MAY BE DETERMINED BY REFERENCE TO THE COUNTY RECORDER'S CUMULATIVE MAP INDEX. NRS 278.5695.
- DIRECT VEHICULAR AND/OR PEDESTRIAN ACCESS TO WASHINGTON AVENUE THROUGH COMMON ELEMENTS FROM ABUTTING LOTS IS STRICTLY PROHIBITED.

FM - 174 - 096

058-4556-1 SHEET 1 OF 1 SHEETS

