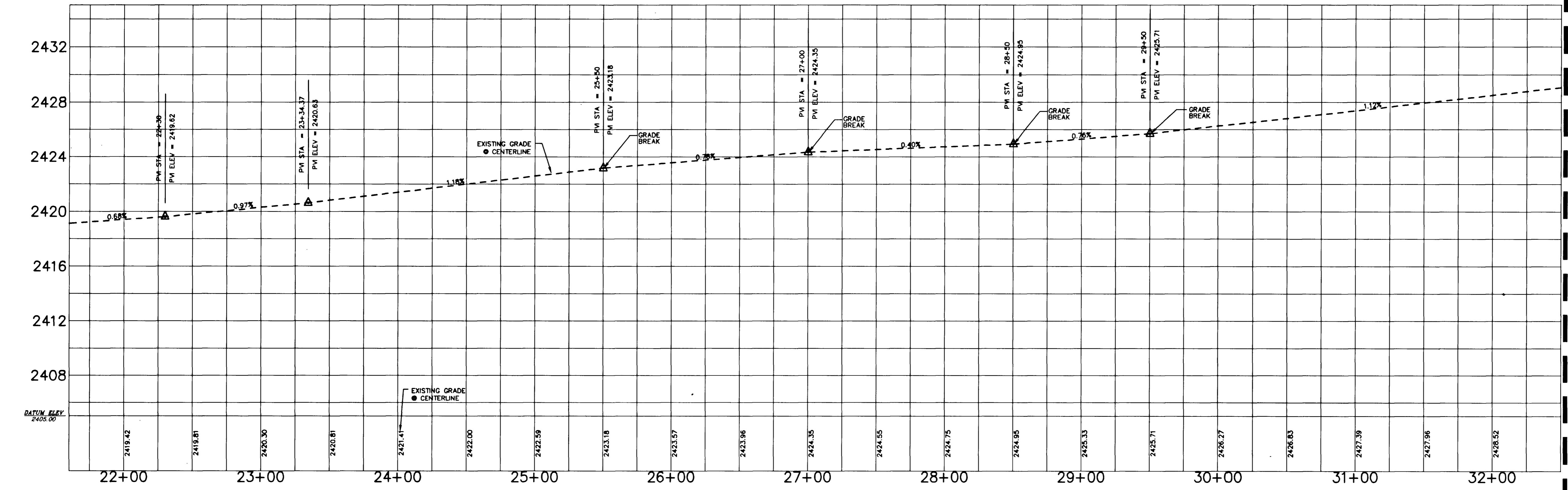


FOR CONTINUATION SEE SHEET PP5

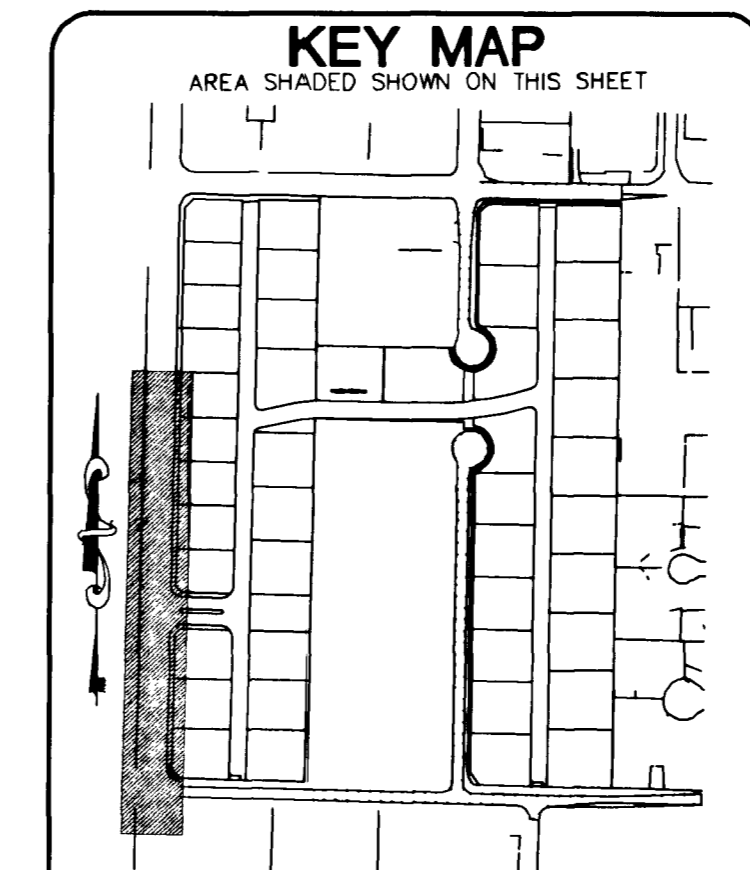
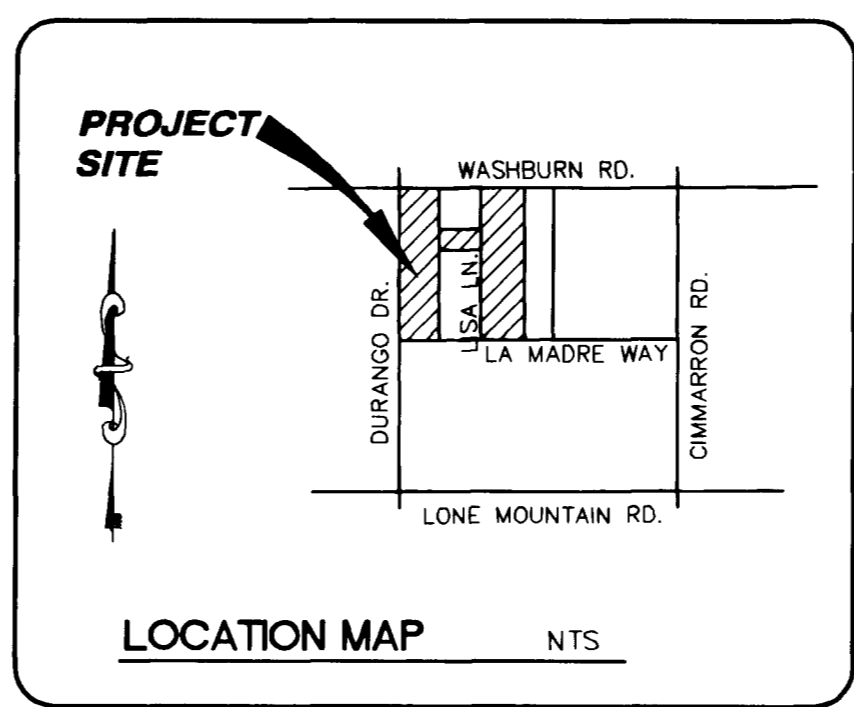
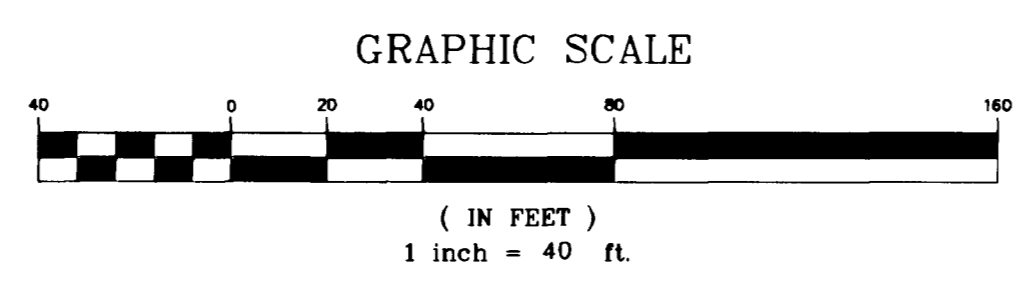


FOR CONTINUATION SEE SHEET PP5

BENCH MARK
 CITY OF LAS VEGAS VERTICAL CONTROL
 RIVET AND PLATE IN TOP OF CURB, NE
 RETURN OF DURANGO DRIVE & WASHBURN RD.
 STATION 11390
 3394
 ELEVATION = 740.8191 METERS 2430.50 FEET (NAVD88) OLD
 740.7932 METERS 2430.42 FEET NEW
 OLD - 0.08' = NEW

BASIS OF BEARING
 NORTH 88°58'14" WEST BEING THE EAST-WEST LINE CENTER
 OF SECTION LINE BETWEEN THE WEST QUARTER (1/4)
 CORNER AND THE WEST SIXTEENTH (1/16) CORNER OF
 SECTION 33, TOWNSHIP 19 SOUTH, RANGE 60 EAST M.D.M.,
 CITY OF LAS VEGAS, CLARK COUNTY, NEVADA, AS SHOWN
 BY MAP IN THE OFFICE OF THE CLARK COUNTY, NEVADA
 RECORDER IN FILE 82 OF PARCEL MAPS PAGE 75.

61840



SEE SHEET PP2 FOR
 CURVE AND LINE DATE TABLES

CALL BEFORE YOU OVERHEAD
 1-702-593-6111
 NEVADA POWER ENVIRONMENT AND SAFETY SERVICES DEPARTMENT

NOTICE!
 EXISTING UTILITIES ARE SHOWN ON PLANS FOR THE CONVENIENCE OF THE CONTRACTOR ONLY. THE CONTRACTOR IS RESPONSIBLE FOR THE PROTECTION OF ALL UTILITIES. THE ENGINEER BEARS NO RESPONSIBILITY FOR UTILITIES NOT SHOWN OR SHOWN INCORRECTLY.

Call BEFORE YOU Dig
 1-800-227-2600
 UNDERGROUND SERVICE (USA)

TOLL BROTHERS 1635 VILLAGE CENTER CIRCLE, SUITE 100 LAS VEGAS, NV 89134 (702) 243-9800 FAX (702) 243-9610		ENGINEERING COMPANY NV 89107 Telephone: (702) 877-1300	
WASHBURN & DURANGO UNIT 1 (AKA - NORTH CANYON ESTATES)		PLAN AND PROFILE DURANGO DRIVE	
DRAWN BY: RCV	05/13/03	SHEET PP4	APPROVED DATE
DESIGNED BY: RCV	05/13/03	OF 17 SHEETS	REVISION
CHECKED BY: BWS	05/13/03	PROJECT NO. 316710	BY
SCALE: 1" = 40'		DATE 10/20/03	
PROJECT NO. 316710		DRAWING NO. 10744-589	