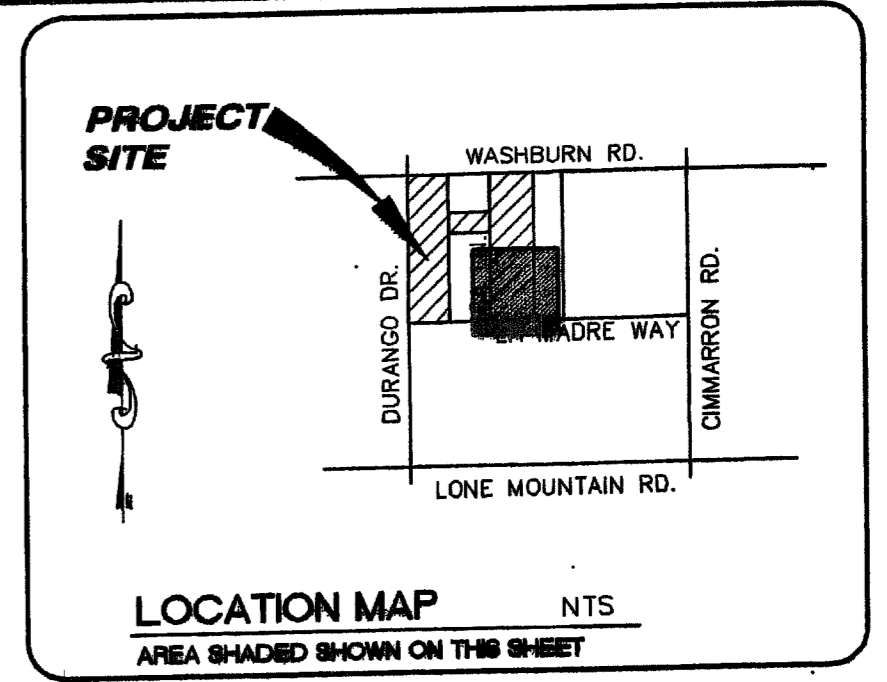
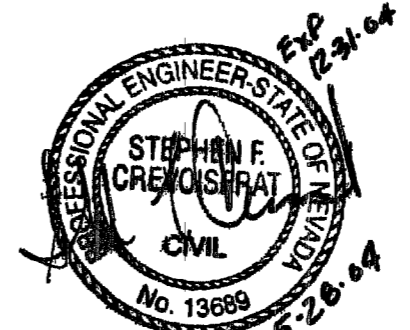
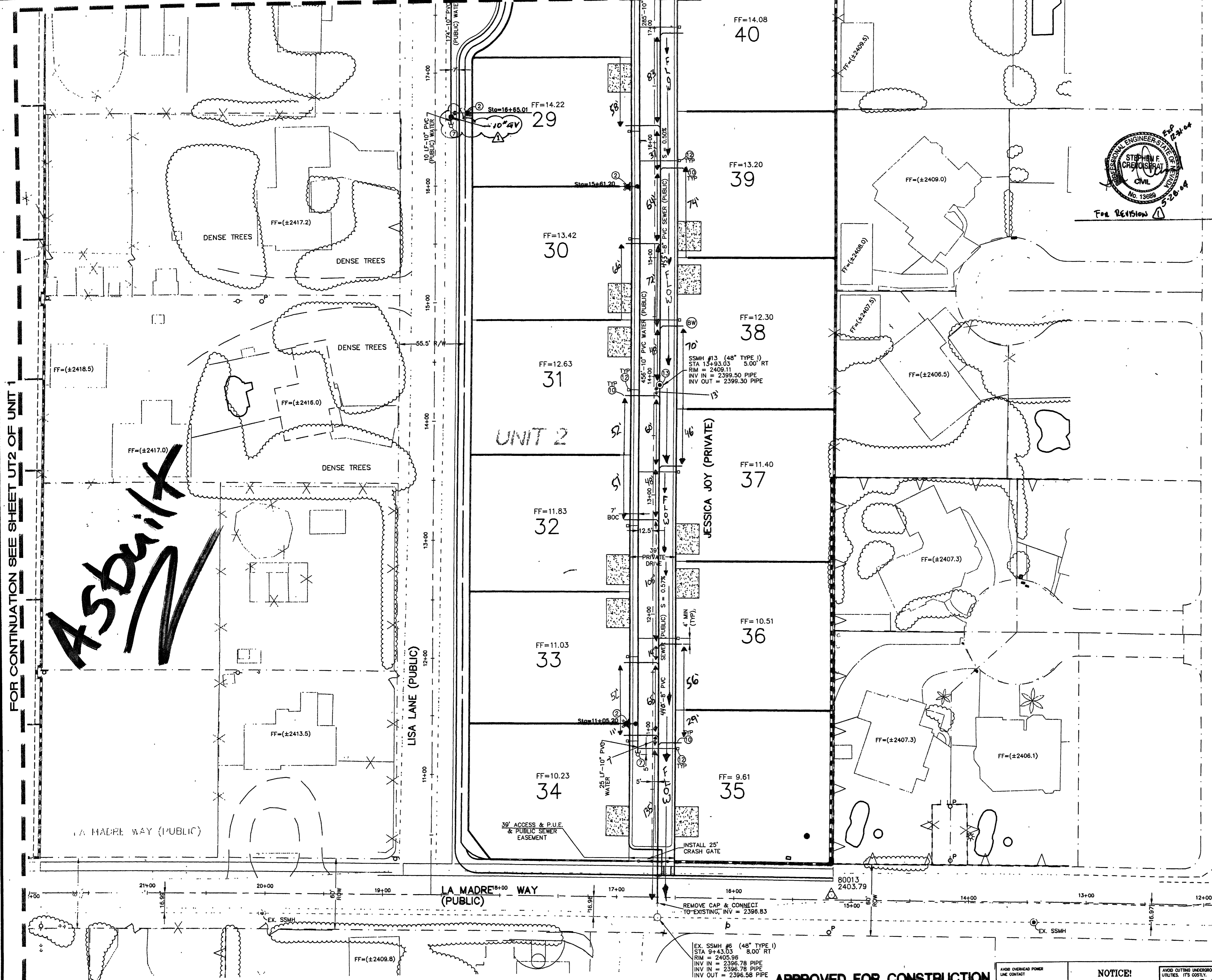


FOR CONTINUATION SEE SHEET UT1

FOR CONTINUATION SEE SHEET UT2 OF UNIT 1

Asbuilt



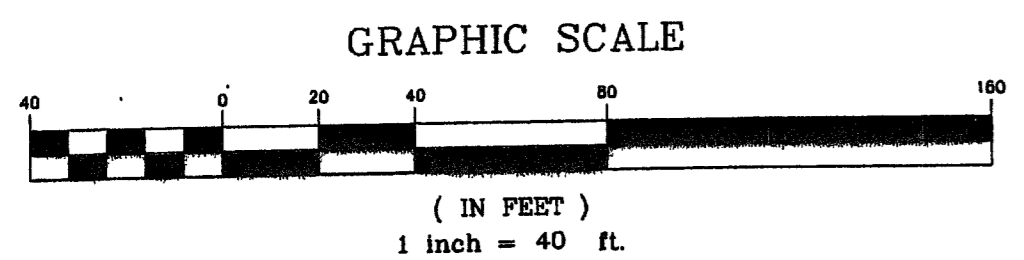
BENCH MARK CITY OF LAS VEGAS VERTICAL CONTROL RIVET AND PLATE IN TOP OF CURB, NE RETURN OF DURANGO DRIVE & WASHBURN RD. STATION 11292 33344 ELEVATION = 740.8191 METERS 2430.50 FEET (NAVD88) OLD 740.7932 METERS 2430.42 FEET NEW OLD - 0.08' = NEW

BASIS OF BEARING NORTH 88°58'14" WEST BEING THE EAST-WEST LINE CENTER OF SECTION LINE BETWEEN THE WEST QUARTER (1/4) CORNER AND THE WEST SIXTEENTH (1/16) CORNER OF SECTION 33, TOWNSHIP 19 SOUTH, RANGE 60 EAST M.D.M., CITY OF LAS VEGAS, CLARK COUNTY, NEVADA. AS SHOWN BY MAP IN THE OFFICE OF THE CLARK COUNTY, NEVADA RECORDER IN FILE 82 OF PARCEL MAPS PAGE 75.

- LEGEND: EXISTING STREET LIGHTS, NEW STREET LIGHT, PHOTO EYE, ELECTRICAL PEDISTAL, PULL BOX AS SHOWN, GATE VALVE, EX GATE VALVE, EXISTING FIRE HYDRANT, NEW FIRE HYDRANT, BACKWATER VALVE, SEWER MANHOLE, EXISTING SEWER MANHOLE, STORM DRAIN MANHOLE, SEWER AND WATER SERVICE, STREET NAME SIGN, STREET SIGN (SPEED LIMIT 25) (R2-1), STOP SIGN (R1-1), FUTURE IMPROVEMENTS, EX. IMPROVEMENTS, STREET LIGHT CONDUIT, UNIT LINE.

UTILITY CONSTRUCTION NOTES UNIT 2

- 1. INSTALL 10" PVC (PUBLIC) WATERLINE 1,582 LF
2. INSTALL FIRE HYDRANT ASSEMBLY PER UNIFORM DESIGN AND CONSTRUCTION STANDARDS FOR WATER DISTRIBUTION SYSTEMS (UDS) PLATE No. 7, AND THE LOCATION SHALL BE DETERMINED BY USD 516 6 EA
3. INSTALL 10" TEE PER UDACS PLT. 5 2 EA
4. INSTALL 8" - 45° BEND PER UDACS PLT. 5 2 EA
5. INSTALL 10" - "SPECIFIED FITTINGS" 5" BEND W/ RESTRAINED JOINTS 3 EA
6. INSTALL 10" - 11.25° BEND 0 EA
7. INSTALL CAP & 2" BLOWOFF ASSEMBLY PER UDACS PLATE No. 4A 3 EA
8. INSTALL 10" GATE VALVE, VALVES SHALL NOT BE LOCATED IN STREET VALLEY GUTTERS PER UDACS PLT. 3 & 8 3 EA
9. 8" PVC SANITARY SEWER LINE 1203 LF
10. 4" PVC SANITARY SEWER LATERAL 506 LF
11. CONNECT TO EXISTING W/ 12"x10" MJ TAPPING TEE & TAPPING VALVE ... 1 EA
12. INSTALL 1" METER W/ 1" COPPER SERVICE CONNECTION 20 EA
13. INSTALL 48" DIAMETER MANHOLE ... 3 EA (SEE PLAN & PROFILE FOR VERTICAL INFO.)
14. USE AWWA C900 PVC WATER QUALITY PIPE FOR SEWER LATERAL.
15. INSTALL 10" DUCTILE IRON PIPE 29 LF
16. INSTALL 8" GATE VALVE, VALVES SHALL NOT BE LOCATED IN STREET VALLEY GUTTERS PER UDACS PLT. 3 & 8 1 EA
17. INSTALL 8" - 90° BEND 2 EA
18. INSTALL 8" PVC (PUBLIC) WATERLINE 289 LF



PRV'S & SEWER BACKWATER VALVES INDIVIDUAL PRESSURE REDUCED VALVES (PRV) ARE REQUIRED FOR ALL BUILDINGS WHICH EXCEEDS STATIC PRESSURE OF 80 PSI. SEWER BACK WATER VALVES ARE REQUIRED FOR BUILDINGS SHOWN ON THIS SHEET.

APPROVED FOR CONSTRUCTION CALL BEFORE YOU OVERHEAD. City Engineer: [Signature], Date: 4/15/04.

NOTICE! EXISTING UTILITIES ARE SHOWN ON PLANS FOR THE CONVENIENCE OF THE CONTRACTOR ONLY. THE CONTRACTOR IS RESPONSIBLE FOR THE PROTECTION OF ALL UTILITIES. THE ENGINEER BEARS NO RESPONSIBILITY FOR UTILITIES NOT SHOWN OR SHOWN INCORRECTLY. 1-800-227-2600

Project information including sheet title 'UTILITY PLAN 2 OF 2', drawing number '10744789-2', and company details for TOLL BROTHERS and ALPHA.

-SEWER ASBUILT-