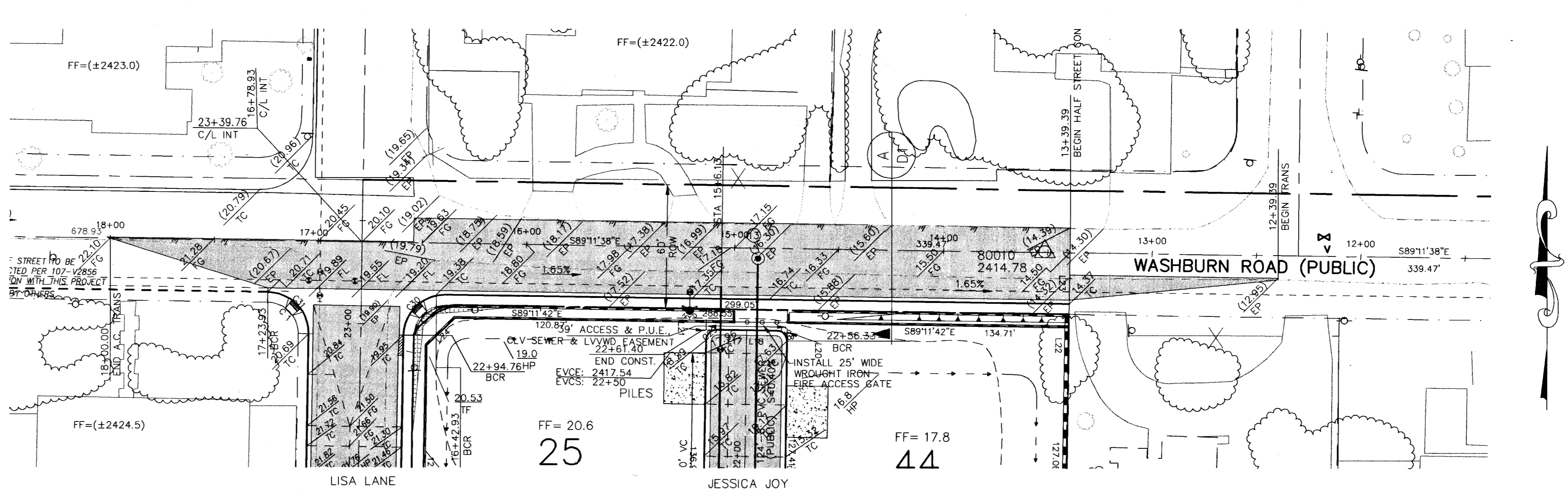
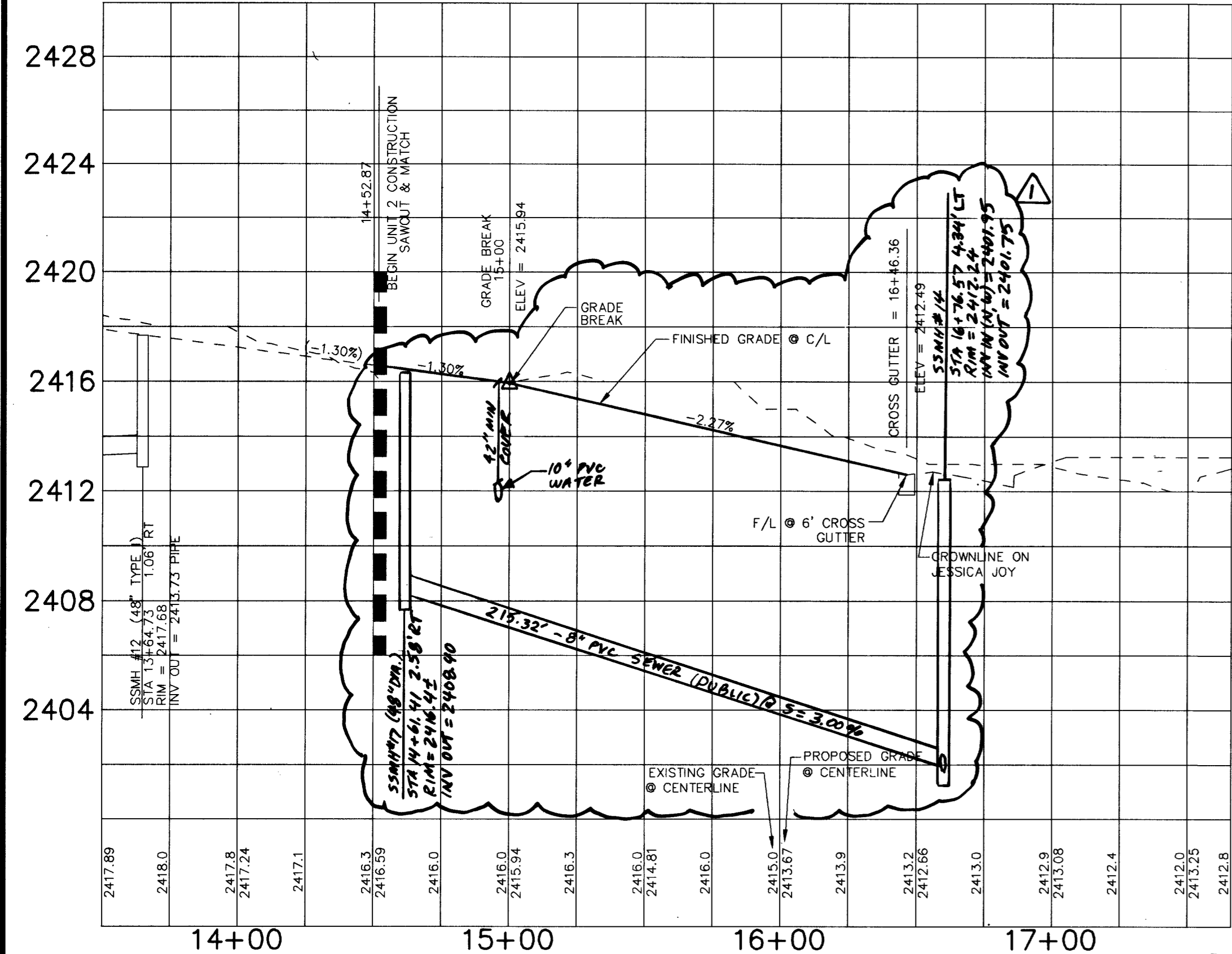
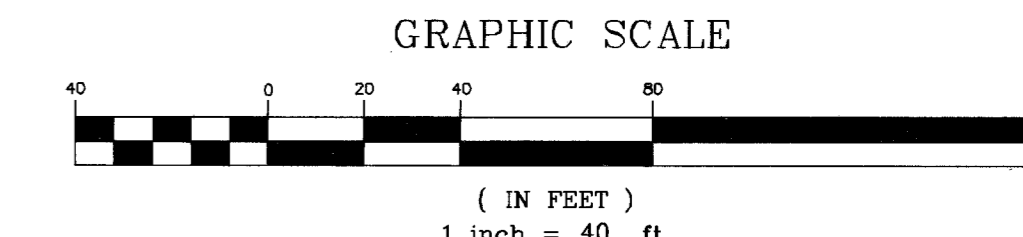


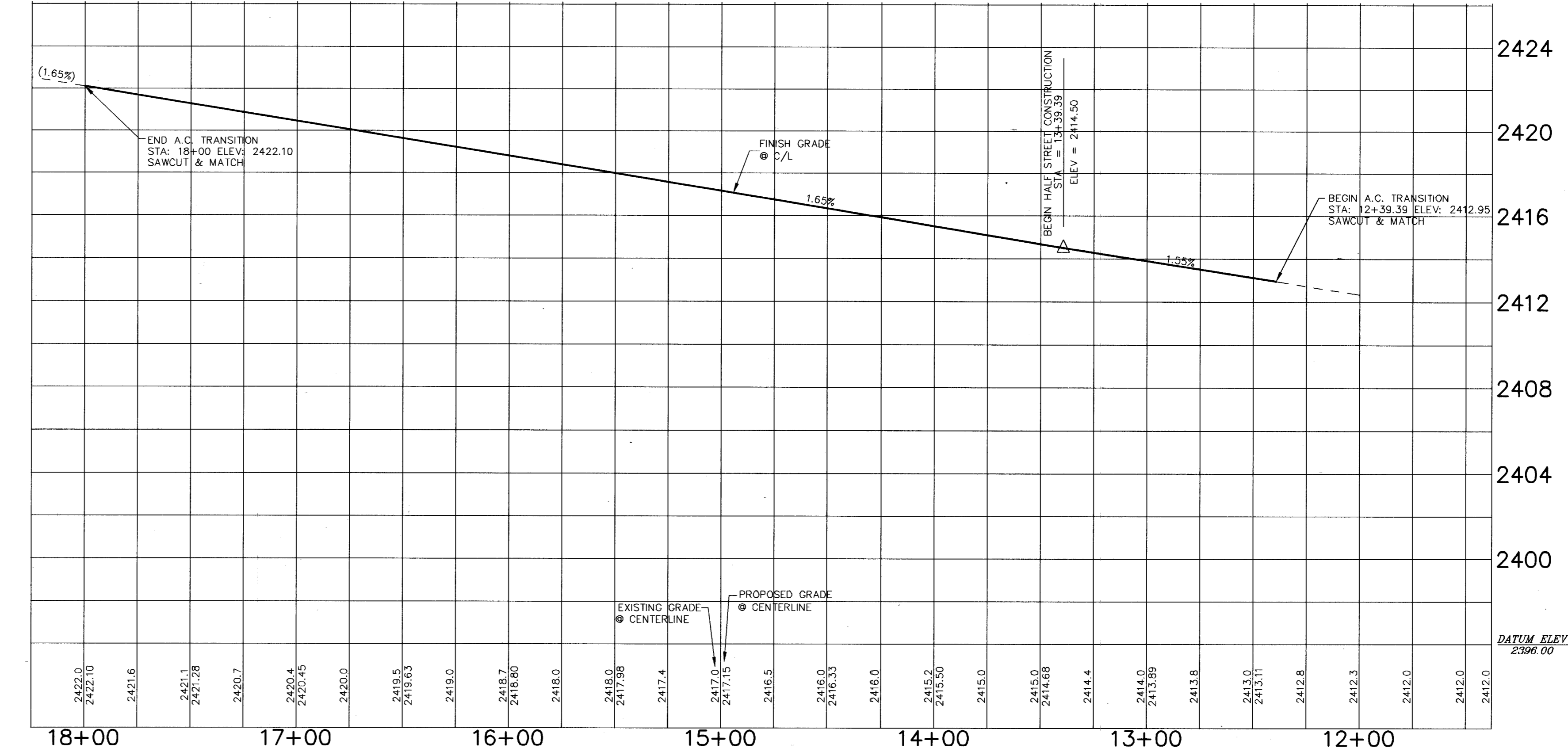
**GARDEN FOUNTAIN**  
(PRIVATE DRIVE)



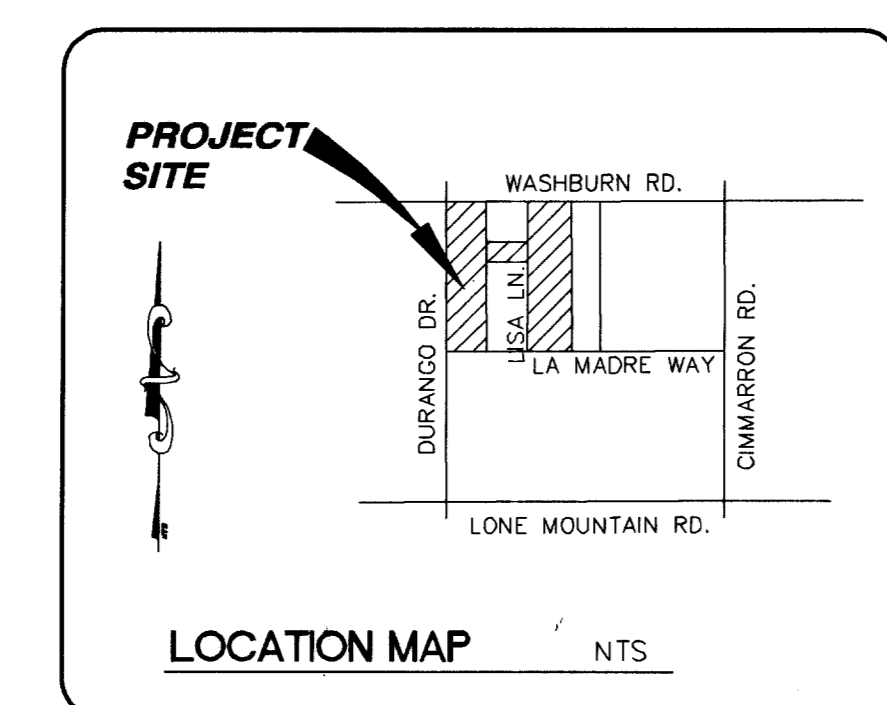
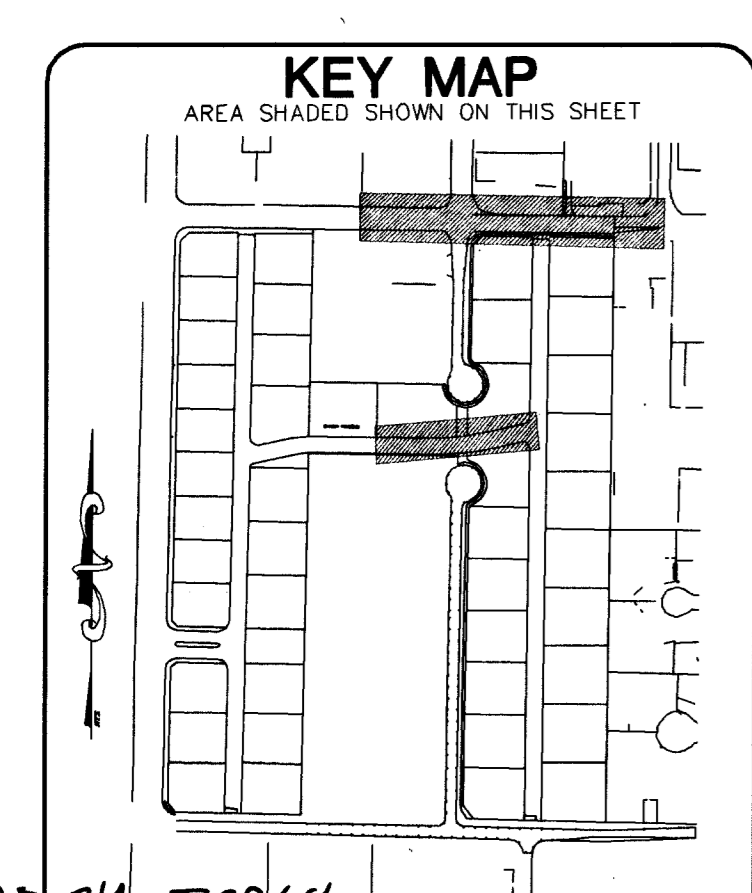
**WASHBURN ROAD (PUBLIC)**



**PROFILE**  
HORIZONTAL: 1"=40'  
VERTICAL: 1"=4'



**PROFILE**  
HORIZONTAL: 1"=40'  
VERTICAL: 1"=4'



**BASIS OF BEARING**  
NORTH 88°58'14" WEST BEING THE EAST-WEST LINE CENTER OF SECTION LINE BETWEEN THE EAST-WEST LINE CENTER OF SECTION 33, TOWNSHIP 19 SOUTH, RANGE 60 EAST M.D.M., CITY OF LAS VEGAS, CLARK COUNTY, NEVADA, AS SHOWN BY MAP IN THE OFFICE OF THE CLARK COUNTY, NEVADA RECORDER IN FILE 82 OF PARCEL MAPS PAGE 75.

**BENCH MARK**  
CITY OF LAS VEGAS VERTICAL CONTROL RIVET AND PLATE IN TOP OF CURB, NE RETURN OF DURANGO DRIVE & WASHBURN RD. STATION 11V90  
ELEVATION = 740.8191 METERS 2430.50 FEET (NAVD88) OLD 740.7932 METERS 2430.42 FEET NEW  
OLD - 0.08' = NEW

**CURVE DATA TABLES**

NO.	RADIUS	DELTA	LENGTH	TANGENT
C1	15.00	89°31'41"	23.96	15.00
C2	10.00	89°31'41"	15.63	9.92
C3	9.00	53°33'57"	8.41	4.34
C4	8.00	117°27'51"	1.77	0.88
C5	319.50	17°09'40"	62.24	31.22
C6	15.00	87°37'11"	22.94	14.39
C7	15.00	92°59'58"	24.35	15.87
C8	280.50	102°02'01"	51.61	26.48
C9	300.00	133°22'29"	70.90	35.62
C10	744.47	03°58'39"	31.25	25.63
C11	744.47	05°14'44"	80.25	40.40
C12	724.97	102°03'40"	127.30	63.82
C13	45.00	244°31'29"	782.33	---
C14	15.00	44°30'58"	16.98	8.55
C15	51.00	149°13'13"	132.83	186.50
C16	51.00	69°22'59"	61.25	35.30
C17	705.47	05°32'41"	22.27	38.22
C18	705.47	01°32'54"	23.17	11.81
C19	705.47	06°02'49"	74.45	37.26
C20	705.47	09°57'37"	122.64	61.47
C21	705.47	03°30'45"	47.38	23.69
C22	51.00	148°05'55"	131.82	178.40
C23	45.00	174°19'14"	136.91	807.20
C24	9.00	44°32'44"	8.99	3.68
C25	9.00	20°20'13"	1.19	1.81
C26	5.00	80°37'06"	7.91	5.09
C27	5.00	89°22'54"	7.80	4.90
C28	5.00	89°26'57"	7.84	4.90
C29	5.00	80°09'03"	7.87	5.01
C30	20	89°59'44"	31.41	20
C31	20	91°03'15"	31.42	20
C32	20	89°31'41"	31.25	19.84

**LINE DATA TABLES**

NO.	BEARING	DISTANCE
L1	N88°47'04"W	15.34
L2	S89°20'41"E	20.61
L3	N00°48'38"E	60.57
L4	N00°48'38"E	66.38
L5	S89°05'18"E	6.00
L6	S00°48'38"W	3.20
L7	S00°48'38"W	19.54
L8	N00°48'38"E	42.28
L9	N00°48'38"E	16.78
L10	N89°02'26"W	20.00
L11	N00°48'38"E	16.80
L12	N89°17'22"W	15.00
L13	N37°23'44"W	31.01
L14	S88°43'36"E	14.65
L15	S88°43'36"E	14.53
L16	S00°39'19"W	14.85
L17	N89°17'18"W	14.69
L18	N89°17'18"W	14.51
L19	S00°39'19"W	15.05
L20	S00°39'19"W	8.88
L21	N00°39'19"E	8.89
L22	N00°39'19"E	6.00
L23	N00°39'19"E	30.00
L24	N42°48'29"E	18.07

**CALL BEFORE YOU OVERHEAD**  
1-702-593-6111  
NEVADA POWER ENVIRONMENT AND SAFETY SERVICES DEPARTMENT

**NOTICE!**  
EXISTING UTILITIES ARE SHOWN ON PLANS FOR THE CONVENIENCE OF THE CONTRACTOR ONLY. THE CONTRACTOR IS RESPONSIBLE FOR THE PROTECTION OF ALL UTILITIES. THE ENGINEER BEARS NO RESPONSIBILITY FOR UTILITIES NOT SHOWN OR SHOWN INCORRECTLY.

**Call BEFORE YOU Dig**  
1-800-227-2600  
UNDERGROUND SERVICE (USA)

**TOLL BROTHERS**  
1635 VILLAGE CENTER CIRCLE SUITE 100  
LAS VEGAS, NV, 89134  
(702) 243-9600 FAX (702) 243-9610

**ENGINEERING COMPANY**  
50 So. Jones #202, Las Vegas, NV, 89107  
Telephone: (702) 877-1300

**ALPHA &**

**WASHBURN & DURANGO UNIT 2**  
(AKA - NORTH CANYON ESTATES)

**PLAN AND PROFILE AND GARDEN FOUNTAIN AND WASHBURN ROAD**

DRAWN BY: 05/13/03  
DESIGNED BY: 05/13/03  
CHECKED BY: 05/13/03  
PROJECT NO: 518710

SCALE: 1"=40'

SHEET 8 OF 14 SHEETS  
**PP1**  
DRAWING NO. 10744789-2

DATE: 05/13/03  
BY: [Signature]  
REV: [Signature]

69092 7/2 20964