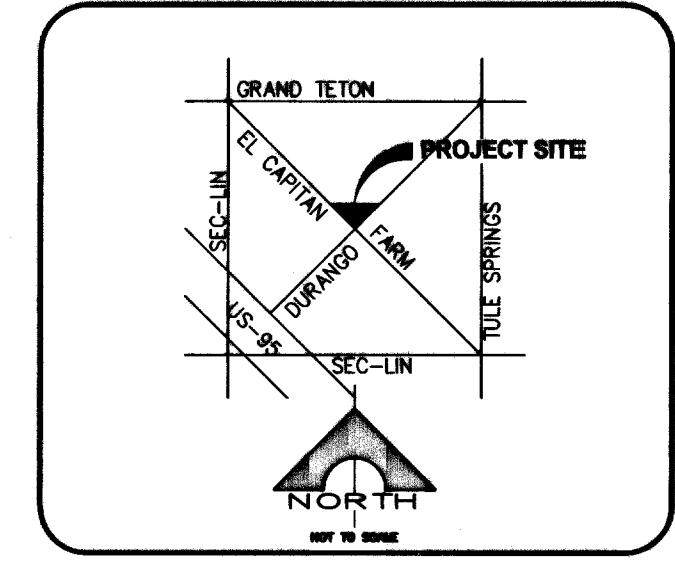
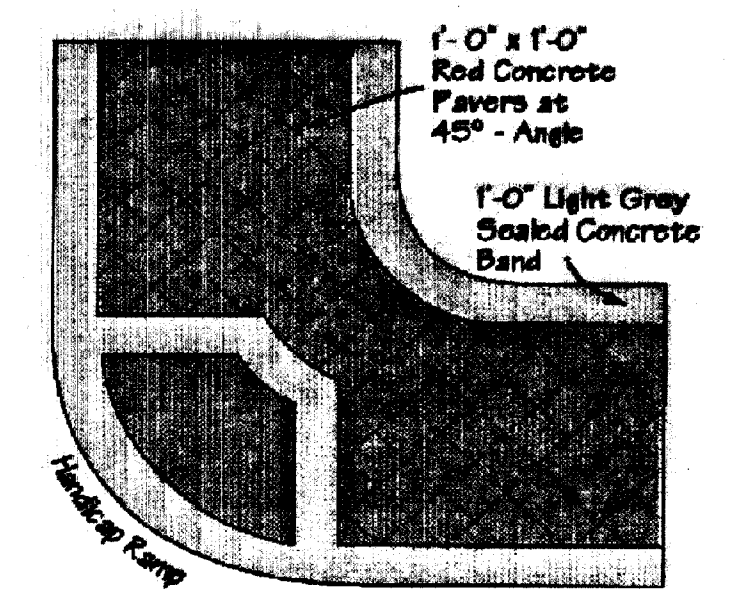
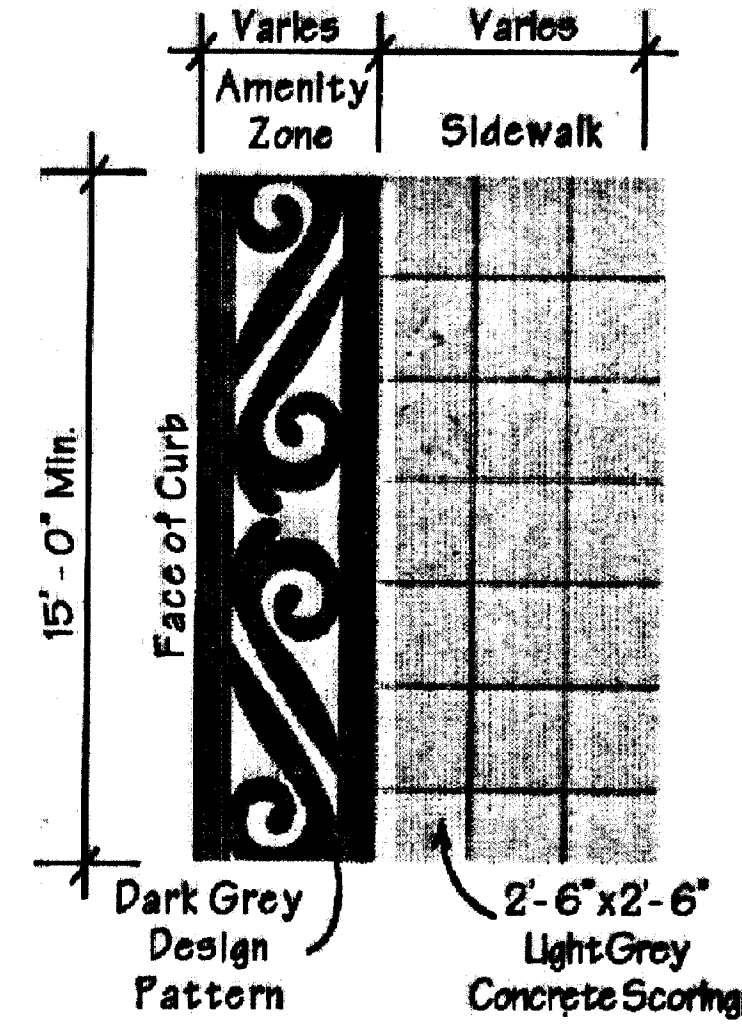


- CONSTRUCTION NOTES**
- CONST. S/W RAMP PER STD DWG No 235. 'A' & 'B' AS NOTED W/ RED CONCRETE PAVERS AND CONCRETE EDGE BANDS PER DETAIL HEREDIN
 - CONST. S/W UNDERDRAIN PER STD DWG No 236
 - CONST. CROSS-GUTTER & SPANDREL PER STD DWG No 228
 - CONST. PVMT & BASE, CURB & SIDEWALK PER TYPICAL SECTION HEREDIN
 - CONST. TACK-ON ISLAND MEDIAN PER STD DWG No 221
 - CONST. CEMENT SLURRY ENCASEMENT PER UDACS 2.19.02-B
 - BACKFILL & PVMT PATCH PER UDACS PLATE No. 6D
 - ADJUST INDICATED ITEM TO GRADE
 - INSTALL 15 LF AMENITY ZONE DESIGN PATTERN PER DETAIL HEREDIN



AMENITY ZONE DESIGN PATTERN



Note: Building corner design shall comply with City of Las Vegas SVRE requirements.

SIDEWALK RAMP CONSTRUCTION:

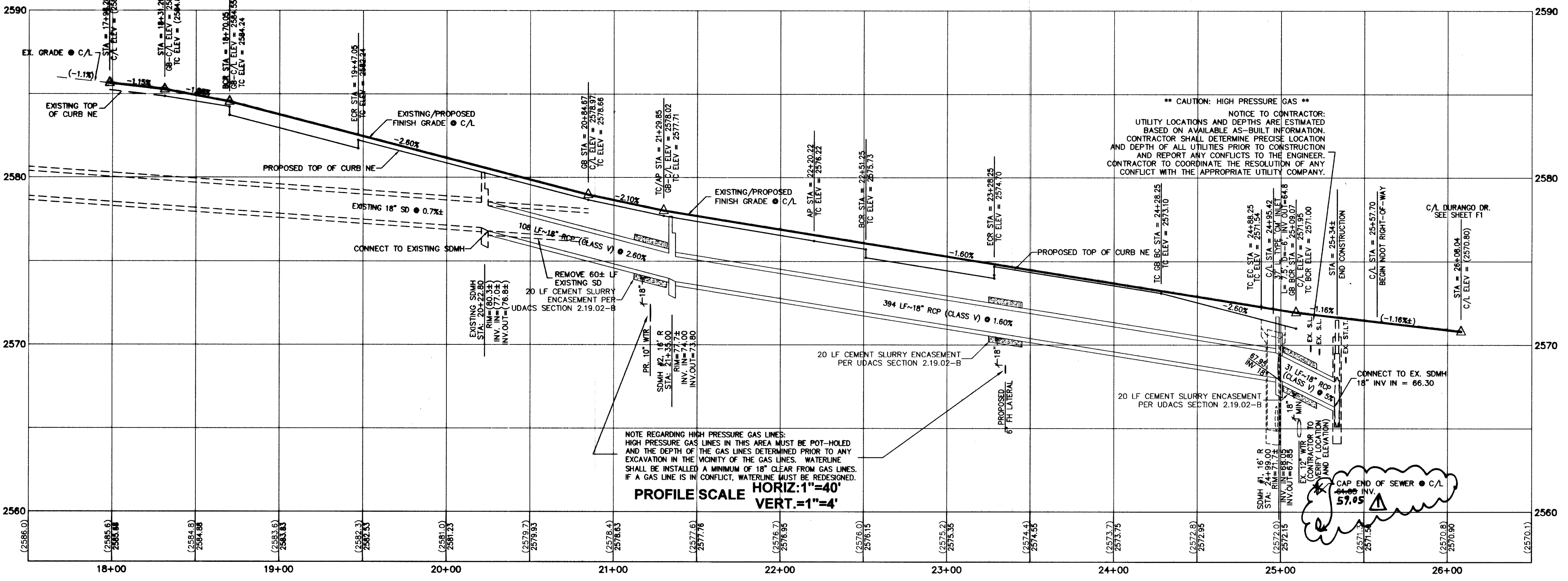
ACCENT PATTERNS SHALL BE PROVIDED AT ALL SIDEWALK RAMPS PER TOWN CENTER STANDARDS. ACCENT PATTERN SHALL CONSIST OF RED CONCRETE PAVERS, ONE SQUARE FOOT IN SIZE, LAID AT A 45° ANGLE, WITH A ONE FOOT WIDE LIGHT GREY SEALED CONCRETE BAND (SEE SAMPLE ABOVE).

BENCHMARK

CLARK COUNTY BENCH MARK 0090 17568, RIVET AND SQUARE ALUMINUM PLATE IN TOP CENTER OF HEADWALL ON THE WEST SIDE OF U.S. 95 NEAR MILE MARKER 89.60 (OLD ELEVATION = 784.395m) NEW ELEVATION = 784.363m; 2573.36 FT. DESIGN ELEVATIONS ON THESE PLANS ARE BASED ON THE OLD BENCHMARK ELEVATION. (OLD ELEVATION = NEW ELEVATION + 0.10' FT.)

BASIS OF BEARING

BEING THE NORTH LINE OF THE SOUTH HALF (S 1/2) OF THE NORTHEAST QUARTER (NE 1/4) OF SECTION 17, T. 19 S., R. 60 E., M.D.M., AS SHOWN ON PARCEL MAP IN FILE 97, PAGE 1 OFFICIAL RECORDS, CLARK COUNTY, NEVADA, BEARING NORTH 89°49'16" WEST



NDOT PERMIT REQUIREMENTS

IF ANY WORK IS NECESSARY WITHIN THE NDOT RIGHT-OF-WAY, THEN AN APPROVED NDOT OCCUPANCY PERMIT SHALL BE OBTAINED THROUGH THE DISTRICT, PRIOR TO ANY CONSTRUCTION WITHIN THE NDOT RIGHT-OF-WAY. PLANS SHOWING WORK IN THE NDOT RIGHT-OF-WAY MUST SHOW NDOT STATIONING. THE DEVELOPER ASSUMES ALL LIABILITY FOR WORK CONDUCTED UNDER ANY DISTRICT OBTAINED PERMIT THROUGH WARRANTY EXPIRATION.

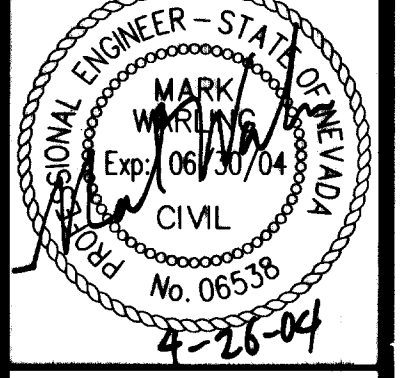


NO. DATE	BY	REVISION
1	MM	REV. 55 04/05 08/17 55 08/17 55 08/17 55 08/17

MARK WARLING, CIVIL ENGINEER
9101 W. Sahara Ave., # 105-L8
Las Vegas, Nevada 89117
(702) 869-6275

Walgreen's
North corner Durango Drive and El Capitan Way
City of Las Vegas, Nevada
El Capitan Way Plan-Profile

DESIGNED BY:	MARK WARLING
DRAFTED BY:	MARK WARLING
CHECKED BY:	MARK WARLING
DATE:	APR. 26, 2004
SCALE:	1"=40'



SHEET F-2
8 OF 9 SHEETS
DRAWING NO. 107V4021

69613 71 73178