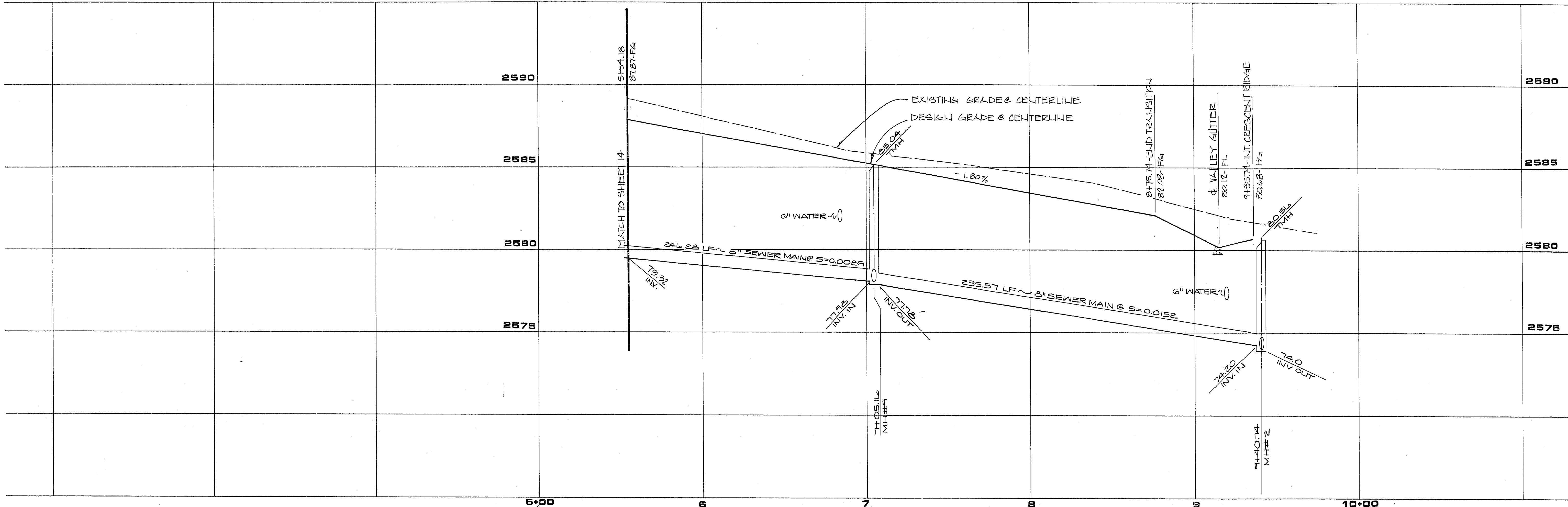


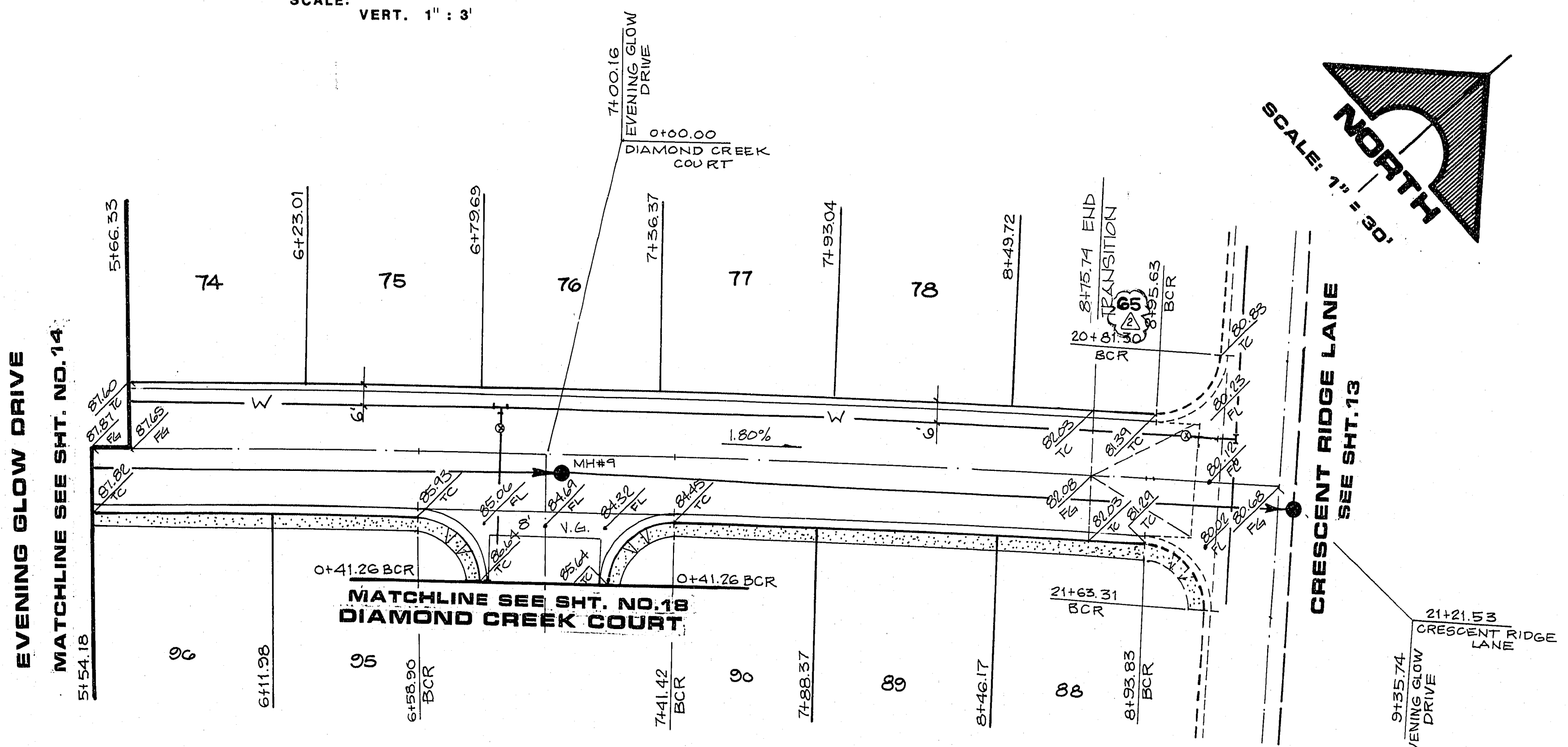
NOTES:

- STRUCTURAL SECTION OF STREET TO CONFORM TO C.L.V. STANDARD DRAWINGS.
- NATIVE MATERIAL MAY BE USED IN LIEU OF TYPE 1 WHEN PROCESSED FOR APPROVAL IN ACCORDANCE WITH CITY OF LAS VEGAS STATEMENT OF POLICY DATED 07/25/84.

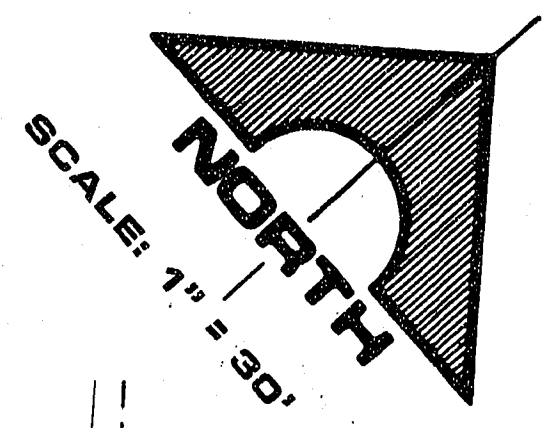
STREET SECTION
SUMMERLIN STANDARD DWG. NO. 5-6



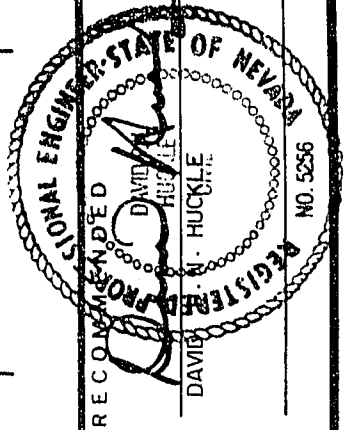
PROFILE
SCALE: HORIZ. 1" : 30'
VERT. 1" : 3'



EVENING GLOW DRIVE



REV	DATE	DESCRIPTION	BY	CHKD	DATE
1	12.10.20	ISSUE FOR PERMITS	RM	RM	12-10-20



G.C. WALLACE, INC.
Engineering/Architecture
1555 SOUTH RAINBOW BLVD. LAS VEGAS, NEVADA 89022

WATT NEVADA INC.
VISIONS
EVENING GLOW DRIVE
STA. 5 + 66.33 TO 9 + 36.74

SHEET
15
OF 22 SHEETS