

**FIRE FLOW CALCULATIONS**

FIRE FLOW REQUIREMENT AT 20 PSI RESIDUAL PRESSURE = ~~900~~ **2375 GPM**

BASED ON:

SQUARE FOOTAGE =  $\frac{70,078}{05,000}$  SQ.FT.

LARGEST AREA BETWEEN 4-HOUR AREA SEPARATION WALLS =  $\frac{70,078}{05,000}$  SQ.FT.

BUILDING HEIGHT = 30 FT.

NUMBER OF STORIES = 2 FLOORS

TYPE OF CONSTRUCTION = ~~V-1A~~ **V-1A**

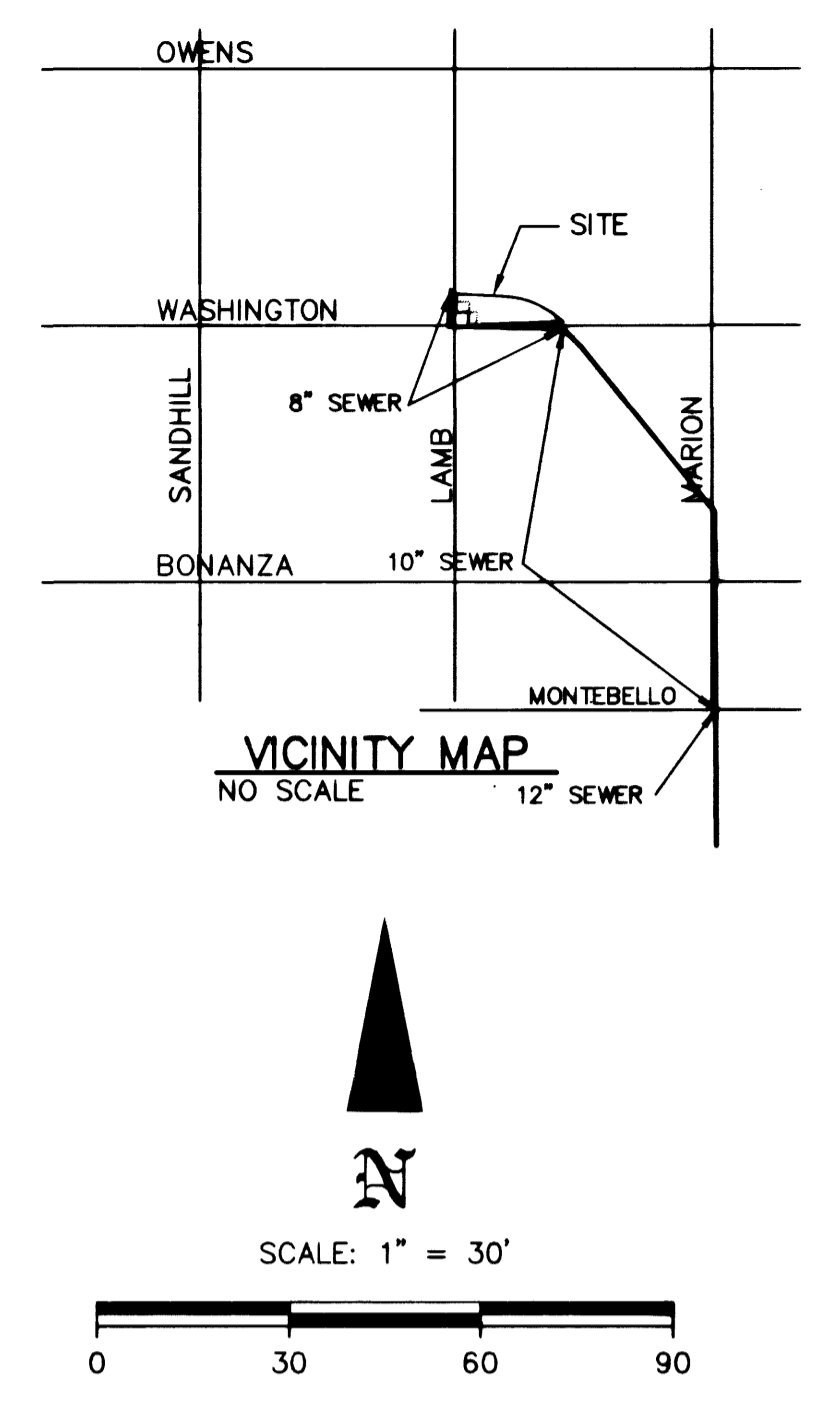
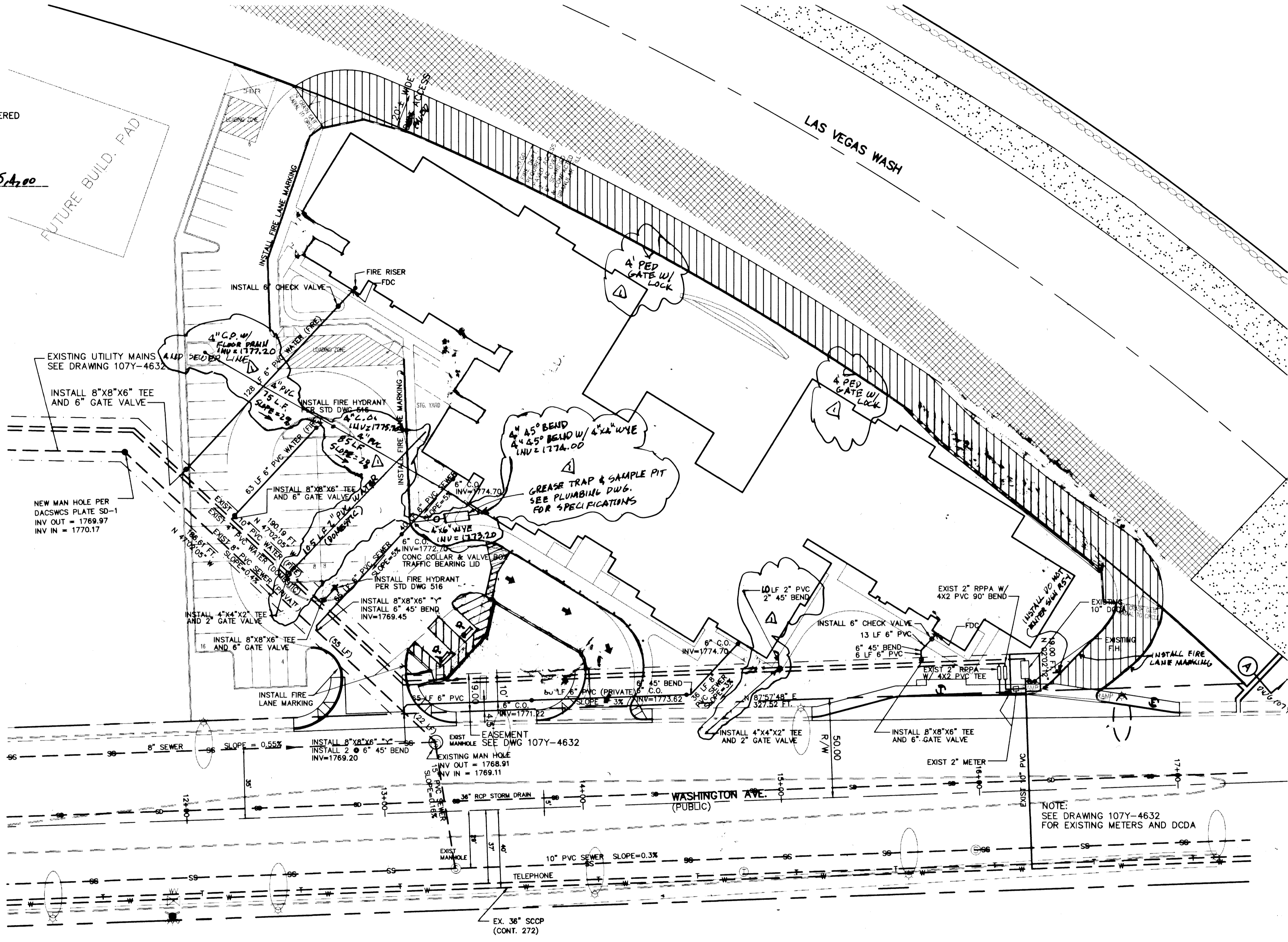
OCCUPANCY = I-2

FULL AUTOMATIC FIRE SPRINKLER SYSTEM BUILDING IS FULLY SPRINKLERED

FIRE HYDRANTS REQUIRED 3

FIRE HYDRANTS PROVIDED 1 EXISTING 2 NEW

REVIEWED BY: *[Signature]* DATE: **5/4/00**  
 CITY FIRE DEPARTMENT



**LAS VEGAS VALLEY WATER DISTRICT STANDARD NOTES**

- NO WORK SHALL BEGIN UNTIL THE WATER PLANS HAVE BEEN RELEASED FOR CONSTRUCTION BY THE LVVWD. FOLLOWING WATER PLAN APPROVAL, 48 HOUR NOTICE SHALL BE GIVEN TO THE LVVWD COMMUNICATION SUPPORT CENTER (258-7171) PRIOR TO THE START OF CONSTRUCTION. NOTICE MUST BE GIVEN BY 2:00 PM THE BUSINESS DAY PRIOR TO A LVVWD INSPECTION.
- ALL WORK SHALL CONFORM TO THE LVVWD'S STANDARD PLATES, DRAWINGS, AND SPECIFICATIONS AND THE UNIFORM DESIGN AND CONSTRUCTION STANDARDS FOR WATER DISTRIBUTION SYSTEMS (UDACS), LATEST EDITION.
- ALL WORK, EXCEPT AS MODIFIED BY THESE PLANS OR BY NOTE 2, SHALL BE DONE IN ACCORDANCE WITH THE MOST CURRENT DRAFT OR EDITION OF THE UNIFORM STANDARD SPECIFICATIONS FOR PUBLIC WORKS CONSTRUCTION OFFSITE IMPROVEMENT, CLARK COUNTY AREA.
- A SINGLE PIPE MATERIAL SHALL BE USED THROUGHOUT THE PROJECT UNLESS OTHERWISE APPROVED BY THE LVVWD.
- ALL SERVICE LATERALS TWO (2) INCHES IN DIAMETER AND SMALLER SHALL BE COPPER TUBING WITH LVVWD APPROVED SERVICE SADDLES.
- ALL WATER METER BOXES SHALL BE LOCATED OUTSIDE OF DRIVEWAY AREAS.
- ALL VALVES SHALL BE LOCATED OUTSIDE OF DRIVEWAYS, VALLEYS AND CURB GUTTERS.
- THE FOLLOWING REQUIREMENTS MUST BE MET IN THE EVENT A WATER LINE AND SANITARY OR STORM SEWER LINE CROSS:
  - A MINIMUM EIGHTEEN (18) INCH VERTICAL SEPARATION (OUTSIDE TO OUTSIDE) MUST BE MAINTAINED WHEN THE WATER LINE IS INSTALLED OVER THE SANITARY OR STORM SEWER LINE. IF THE VERTICAL SEPARATION CANNOT BE MAINTAINED OR THE WATER LINE MUST BE PLACED UNDER THE SANITARY OR STORM SEWER LINE, THE SANITARY OR STORM SEWER LINE MUST BE CONSTRUCTED WITH ONE OF THE FOLLOWING OR, AS SHOWN ON THESE PLANS:
    - POTABLE WATER SUPPLY QUALITY MATERIAL.
    - ENCASUREMENT WITH FOUR (4) INCH CONCRETE (MINIMUM)
    - SLEEVING WITH POTABLE WATER SUPPLY QUALITY PIPE.
  - EACH PROVISION MUST EXTEND ALONG THE SANITARY OR STORM SEWER, ON EITHER SIDE OF THE MAIN, A MINIMUM 10 FOOT DISTANCE PERPENDICULAR TO THE WATER MAIN EXTERIOR.
- WARNING TAPE SHALL BE REQUIRED OVER ALL MAINS, ALL SIX (6) INCH DIAMETER AND LARGER SERVICE LATERALS, AND ANY SERVICE LATERAL NOT INSTALLED PERPENDICULAR TO THE MAIN IN ACCORDANCE WITH STANDARD PLATE NO. 27.
- ALL WATER FACILITIES SHALL BE FILLED, DISINFECTED, PRESSURE TESTED, FLUSHED, FILLED AND AN ACCEPTABLE WATER SAMPLE OBTAINED, PRIOR TO CONNECTION TO THE LVVWD'S DISTRIBUTION SYSTEM.
- THE CONTRACTOR MUST OBTAIN ALL METERS TWO (2) INCHES AND SMALLER FROM LVVWD CENTRAL STORES. TELEPHONE 258-3152 FORTY-EIGHT (48) HOURS PRIOR TO PICKUP.
- CONSTRUCTION MAY INTERRUPT SERVICE, WITH LVVWD APPROVAL AND PROPER NOTIFICATION, BETWEEN THE HOURS OF 10 PM AND 6 AM, SUNDAY THROUGH THURSDAY. CIRCUMSTANCES MAY REQUIRE TEMPORARY SERVICE FEEDS BE INSTALLED, WITHOUT LVVWD REIMBURSEMENT. ANY TEMPORARY SERVICE FEED MUST HAVE PRIOR LVVWD APPROVAL.
- ALL WATER FACILITY CONSTRUCTION MATERIALS USED MUST BE AS LISTED ON THE LVVWD'S PRE-APPROVED MATERIALS AND MANUFACTURERS LISTING FOR NEW FACILITIES, LATEST REVISION, OR SPECIFICALLY APPROVED ON THESE PLANS.

**SEWER QUANTITIES**

PRIVATE	
2 @	8X8X6 "Y"
286 LF @	6" PVC MAIN
4 @	6" 45° BEND
5 @	6" CLEAN OUT

**WATER QUANTITIES**

PRIVATE	
4 @	8X8X6 TEE
4 @	6" GATE VALVE
220 LF @	6" PVC MAIN
1 @	6" 45° BEND
2 @	6" CHECK VALVE
2 @	FIRE DEPARTMENT CONNECTION
2 @	4X4X2 TEE
2 @	2" GATE VALVE
107 LF @	2" PVC LATERAL
1 @	2" 45° BEND
2 @	FIRE HYDRANT

**SEWER CONTRIBUTION**

SEE AZRA COMMERCIAL SUBDIVISION UTILITY DRAWING FOR QUANTITIES DRAWING 107Y-4632

91 BEDS (0.75) = 68.25 MGD  
 AVE DAILY =  $\frac{68.25}{24} = 2.84$  MGD  
 PBAK (DAY) = 0.227 (3.1A) = 0.928 MGD

AND OUTLINE UNDERGROUND UTILITY LINES, ITS COVER, AND DATE

Call before you Dig- 1-800-227-2600 UNDERGROUND SERVICE ALERT (USA)

AND OUTLINE UNDERGROUND UTILITY LINES, ITS COVER, AND DATE

Call before you OVERHEAD 1-702-593-6111 NEVADA POWER CORPORATION AND SAFETY SERVICES DEPARTMENT

LAS VEGAS VALLEY WATER DISTRICT DATE

*[Signature]* 5/31/00 DATE

*[Signature]* 6/2/00 DATE

PREPARED FOR: SALIM RANA, 3230 EAST FLAMINGO RD., LAS VEGAS, NV 89121, (702) 269-2008

BY: AFFLECK ENTERPRISES, 4987 IDAHO AVE., LAS VEGAS, NEVADA 89104, (702) 431-4827, FAX (702) 431-7525

UTILITIES PLAN

VILLE DI TUSCANY, WASHINGTON AVE AT LAMB BLVD., CITY OF LAS VEGAS, NEVADA

PROJECT NO: 00028

SCALE: N/A

DESIGNED BY: L.H. AFFLECK, 4/20/00

CHECKED BY: L.H. AFFLECK, 4/20/00

DRAWN BY: L.H. AFFLECK, 4/20/00

PROJECT NO: 00028

SCALE: N/A

SEAL: LYNN H. AFFLECK, CIVIL ENGINEER, NO. 00076

SHEET C3, 3 OF 4 SHEETS, DRAWING NO. 107-V3303