

AS BUILT

VILLAGE 23A
PARCEL D
APN 164-03-000-001
THE HOWARD HUGHES CORP.

VILLAGE 23A
PARCEL C
APN 137-22-008-006
THE HOWARD HUGHES CORP.

VILLAGE 19
APN 164-03-000-006
HOWARD HUGHES PROPERTIES, INC.

START OF PHASE 1
STORM DRAIN CONSTRUCTION
782+15.72, 31.59' LT

LIMIT OF PHASE 1
STORM LATERAL CONSTRUCTION
NORTH LAT. 783+59.97, 40.57' LT
SOUTH LAT. 783+56.96, 20.96' LT

START OF PHASE 1
SANITARY SEWER CONSTRUCTION
782+15.72, 18.34' LT

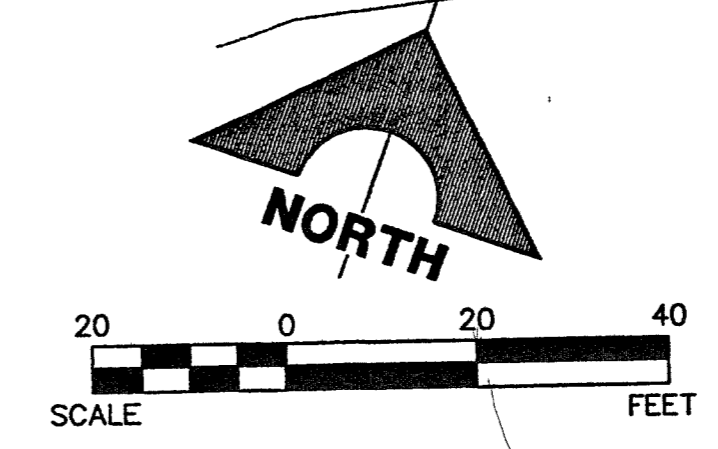
START OF PHASE 2
WATER MAIN CONSTRUCTION
784+70

REDUCED PRESSURE PRINCIPLE ASSEMBLY (RPPA) 1 1/2" (1)
APPROVED RPPA(S) SHALL BE INSTALLED PER THE DISTRICT STANDARD PLATE NO. 11A. PRE FINISHED HYDRO COWL BACK FLOW ENCLOSURES WITH A FINISHED COLOR OF SIERRA TAN, MODEL 200S-AK, (OR LVVWD APPROVED EQUAL BY ENGINEER) SHALL BE USED FOR 1 1/2" RPPA'S. NO WATER SHALL BE TAKEN FROM A SERVICE REQUIRING BACKFLOW PREVENTION UNTIL THE RPPA HAS BEEN SUCCESSFULLY TESTED BY THE LVVWD. ANY BLOCK WALL OR OTHER FENCE MATERIAL SHALL BE DESIGNED AND CONSTRUCTED AROUND THE OUTSIDE OF THE EASEMENT(S), SO AS TO ALLOW THE DISTRICT ACCESS FROM THE ADJACENT RIGHT-OF-WAY.

CHARLESTON BOULEVARD (PUBLIC)

REFER TO SHEET 2 FOR CONSTRUCTION NOTES

SCALE: HORIZ. 1" = 20'
VERT. 1" = 5'



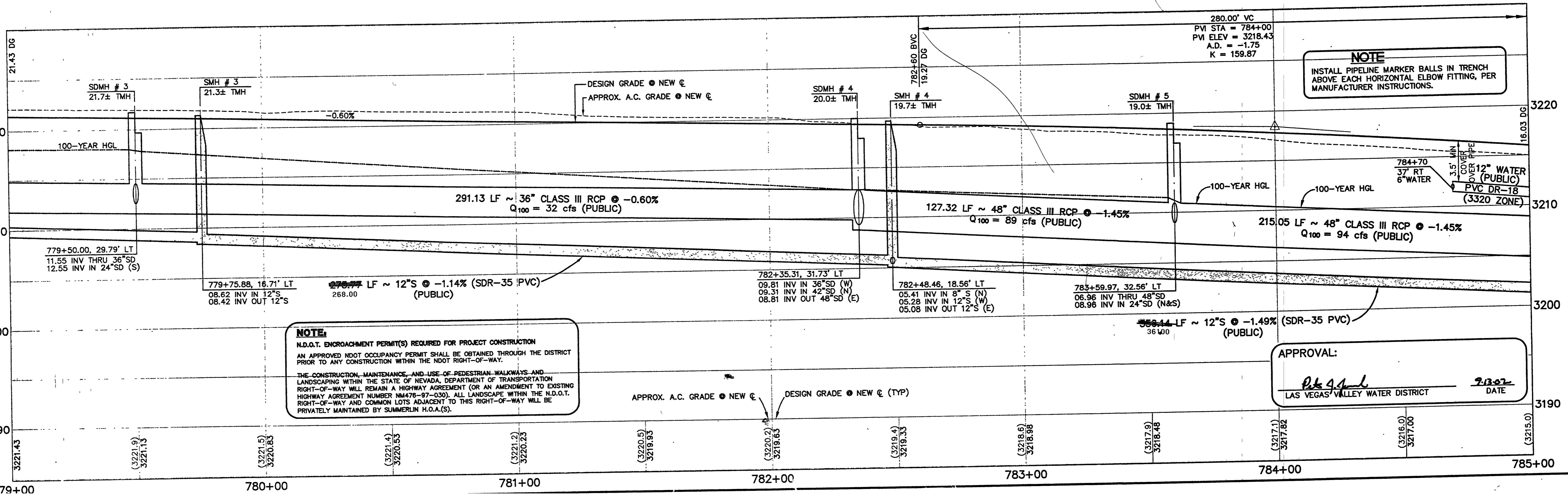
NOTE
THIS SET OF DRAWINGS IS BASED UPON NAVD 88 DATUM, PREVIOUS DRAWINGS MAY BE BASED ON OTHER DATUM. CARE SHOULD BE OBSERVED WHEN UTILIZING THIS SET OF DRAWINGS.

Call before you Dig.
1-800-227-2600
NEVADA BUSINESS ALERT BOARD



| BENCHMARK | | | |
|------------|--|----------------|------------------|
| CLV BM NO. | DESC. | NAVD 88 DATUM | NAVD 88 DATUM |
| 0368 3 | U.S.C. & G.S. BRASS DISC SET IN ROCK ON THE EAST SIDE OF CHARLESTON BOULEVARD AND SOUTH OF THE RED ROCK DETENTION BASIN. | 3246.71 (FEET) | 989.599 (METERS) |

BASIS OF BEARINGS
NORTH 89°45'05" EAST BEING THE SOUTH LINE OF THE SOUTHWEST QUARTER (SW 1/4) OF SECTION 35, TOWNSHIP 20 SOUTH, RANGE 59 EAST, M.D.M., AS SHOWN BY MAP ON FILE IN FILE 91, PAGE 28 OF PARCEL MAPS IN THE CLARK COUNTY RECORDER'S OFFICE, CLARK COUNTY, NEVADA



NOTE
INSTALL PIPELINE MARKER BALLS IN TRENCH ABOVE EACH HORIZONTAL ELBOW FITTING, PER MANUFACTURER INSTRUCTIONS.

APPROVAL:
[Signature]
LAS VEGAS VALLEY WATER DISTRICT
DATE: 9.13.07

AS BUILT

G.C. WALLACE, INC.
Engineers/Planners/Surveyors
1655 SOUTH RAINBOW BLVD., LAS VEGAS, NEVADA 89146
OFFICE: (702) 804-2000, FAX: (702) 804-2299

SUMMERLIN
VILLAGE 19/23A CHARLESTON BOULEVARD IMPROVEMENTS