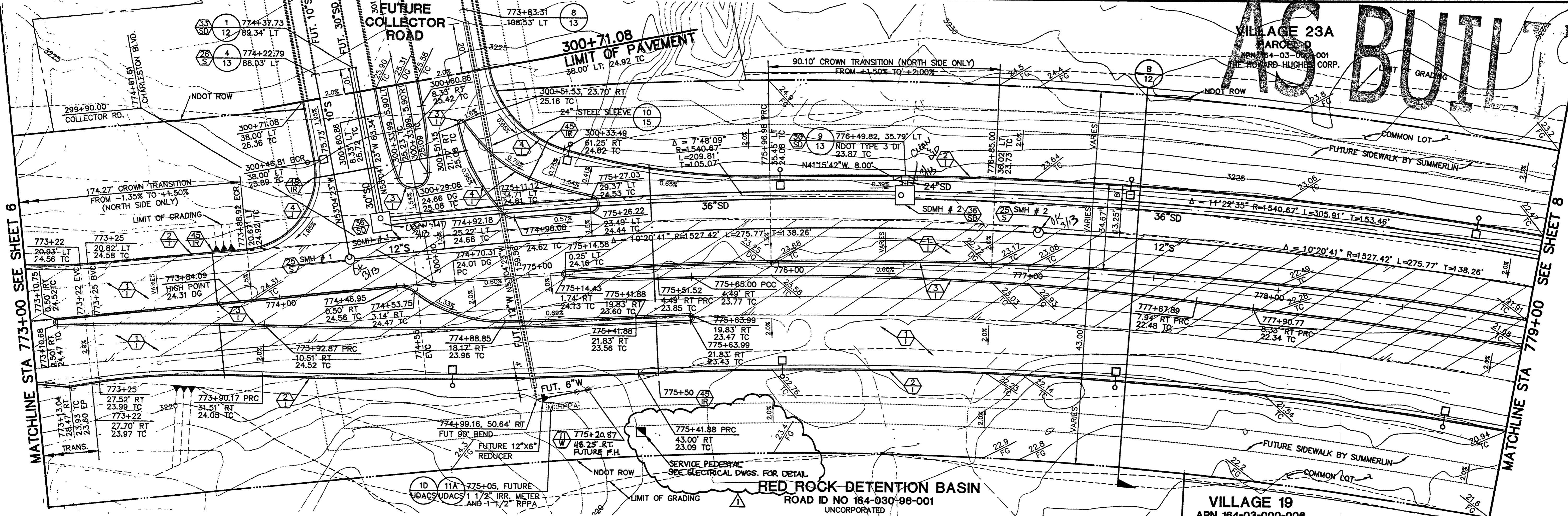


AS BUILT

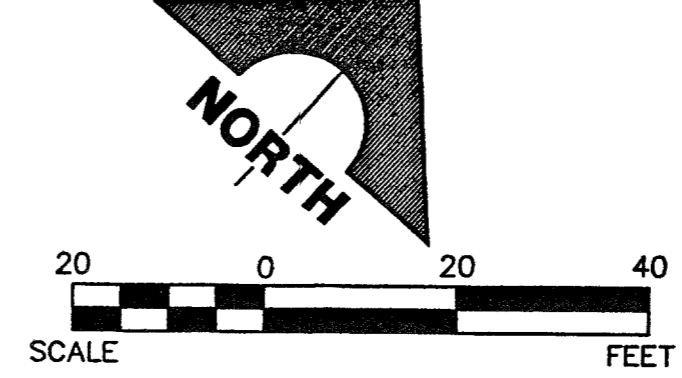


BENCHMARK			
CLV	DESC.	NAVD 88 DATUM	NAVD 88 DATUM
D368 3	U.S.C. & G.S. BRASS DISC SET IN ROCK ON THE EAST SIDE OF CHARLESTON BOULEVARD AND SOUTH OF THE RED ROCK DETENTION BASIN.	3246.71	989.599

BASIS OF BEARINGS
 NORTH 89°45'05" EAST BEING THE SOUTHWEST QUARTER (SW 1/4) OF SECTION 35, TOWNSHIP 20 SOUTH, RANGE 59 EAST, M.D.M., AS SHOWN BY MAP ON FILE IN FILE 91, PAGE 28 OF PARCEL MAPS IN THE CLARK COUNTY RECORDER'S OFFICE, CLARK COUNTY, NEVADA

CHARLESTON BOULEVARD (PUBLIC)

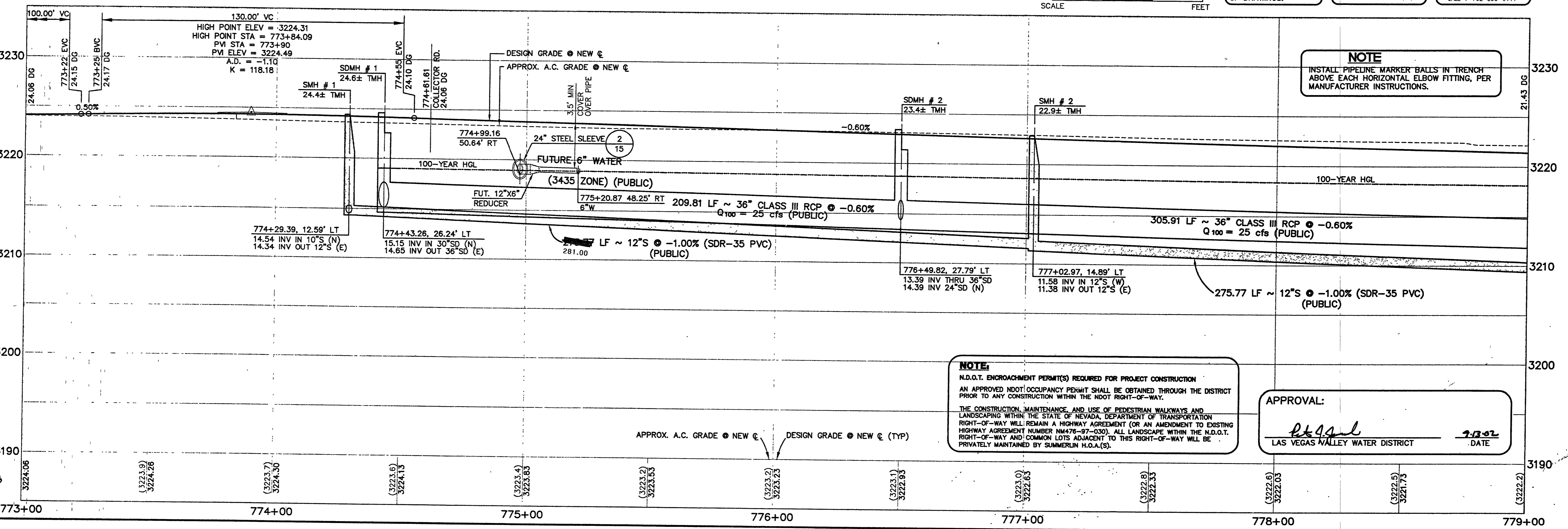
SCALE: HORIZ. 1" = 20'
 VERT. 1" = 5'



NOTE
 THIS SET OF DRAWINGS IS BASED UPON NAVD 88 DATUM, PREVIOUS DRAWINGS MAY BE BASED ON OTHER DATUM. CARE SHOULD BE OBSERVED WHEN UTILIZING THIS SET OF DRAWINGS.

Call before you Dig.
 1-800-227-2600
UNDERGROUND SERVICE ALERT (USA)

CALL BEFORE YOU DO OVERHEAD
 CALL 1-702-593-6111



G.C. WALLACE, INC.
 Engineers/Planners/Surveyors
 1555 SOUTH RAINBOW BLVD., LAS VEGAS, NEVADA 89146
 OFFICE: (702) 804-2000, FAX: (702) 804-2939
 SUMMERLIN OFFICE: 10000 CHARLESTON BLVD., STE. 130
 OFFICE: (702) 804-2100, FAX: (702) 804-2995
 E:\V23\Charleston\Drawings\ASBUILT\ASBUILT.dwg

SUMMERLIN
 VILLAGE 19/23A CHARLESTON BOULEVARD IMPROVEMENTS
 CHARLESTON BOULEVARD
 PLAN AND PROFILE STA. 773+00 TO 779+00
 SHEET 7
 7 OF 21 SHEETS
 B NO. 62023240