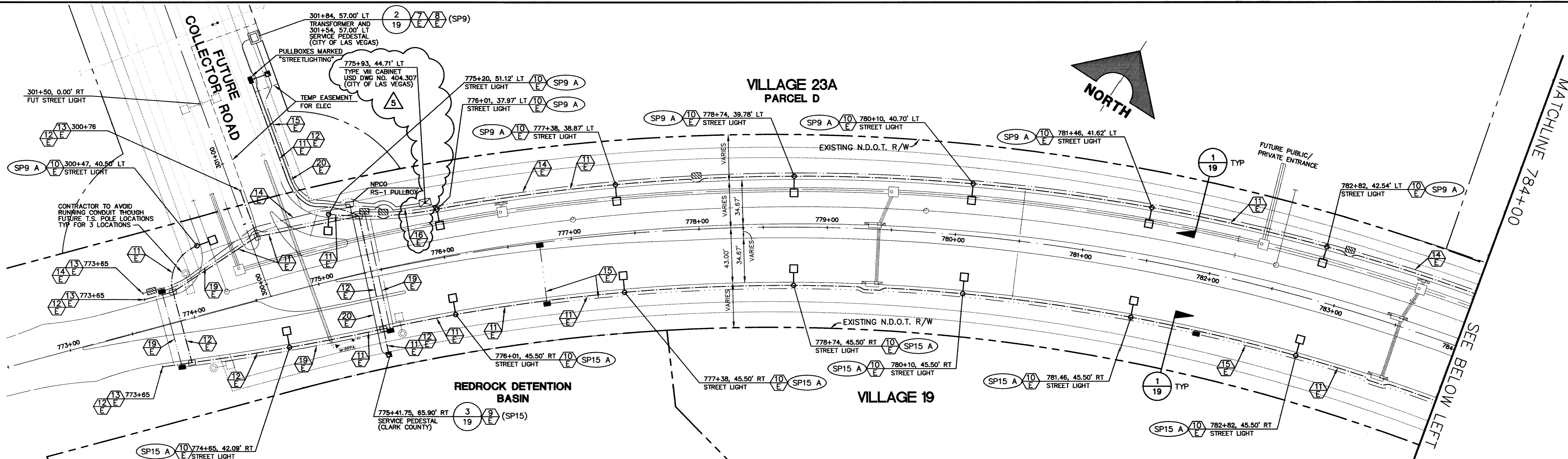
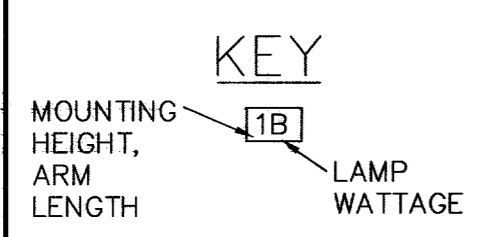


DESIGN:	DFE
DRAWN:	GBW
CHECK:	GBW
ISSUE DATE:	
ISSUE EDITOR:	
PLOT DATE:	12-14-04
REV. DATE:	
REV. DESCRIPTION:	



STREETLIGHT / POLE SCHEDULE

POLE HEIGHT	ARM LENGTH	LUMINAIRE MOUNTING HEIGHT	LAMP WATTAGE			SPECIAL REQUIREMENTS MOD
			A	B	C	
TYPE 1	8'	41'-9"	400	250	150	
TYPE 1A MOD	8'	41'-9"	400	-	-	HOUSE SIDE SHIELD BY MANUFACTURER.
TYPE 2	8'	31'-2"	250	150	100	
TYPE 2A MOD 1	10'	29'-7"	400	-	-	CLARK COUNTY AREA STANDARD TYPE XX-A POLE AND TYPE L FOUNDATION. 120V BALLAST
TYPE 2A MOD 2	10'	29'-7"	400	-	-	
TYPE 3	5'	26'-4.5"	150	100	70	
TYPE 4	5'	16'-11.5"	100	70	-	
TYPE 5	5'	25'-7.5"	150	100	70	AMERON MBQ 7.5-DR3 POLE, AMERON CMS-5 ARM SUMMERLIN TYPE 3 FOUNDATION.

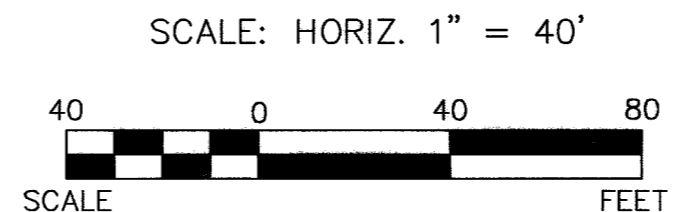


LUMINAIRES SHALL BE 19" (LARGE, TYPE 1 OR TYPE 2 - 100W, 150W, 250W, 400W HPS) OR 14" (SMALL, TYPE 3 OR TYPE 4 - 70W, 100W, 150W HPS) CUTOFF LUMINAIRES WITH EXTRUDED ALUMINUM HOUSING WITH BRONZE POLYESTER FINISH. LUMINAIRES SHALL HAVE IES TYPE 3 MEDIUM CUTOFF ALUMINUM SEGMENTED REFLECTORS WITH CLEAR TEMPERED FLAT GLASS LENSES UNLESS OTHERWISE NOTED. HOUSING AND DOOR SHALL BE GASKETED AND RAIN-TIGHT. BALLAST SHALL BE HIGH POWER FACTOR, MAGNETIC REGULATOR TYPE. LUMINAIRES SHALL BE EQUAL TO GARDCO SU-EH1413, SU-EH1913, SU-EH1013; STERNER SU14-A-10-3D; SU19-A-10-3D; OR APPROVED EQUAL. ARM AND POLE SHALL BE AS MANUFACTURED FOR SUMMERLIN BY AMERON, OR BY APPROVED EQUAL, UNLESS OTHERWISE NOTED. BOTH LUMINAIRE AND ARM SHALL HAVE A POWDER COAT PAINT FINISH. TRAFFIC SIGNAL POLES AND LUMINAIRE ARMS SHALL BE FINISHED WITH AMERSHIELD SYSTEM NO. 5442C "HUMMINGBIRD BROWN" OR APPROVED EQUIVALENT IN ACCORDANCE WITH THE MANUFACTURER'S RECOMMENDATIONS.

LEGEND

- STREET LIGHT CONDUIT (1) 1-1/4", 2#4, 1#8 GND. THW. UNLESS OTHERWISE NOTED
- TRAFFIC INTERCONNECT CONDUIT (1) 4" CONDUIT W/ 3' RADIUS SWEEPS INTO PULLBOXES FOR FUTURE FIBER OPTIC.
- TRAFFIC SIGNAL CONDUIT (1) 3"C, 2#10, 1#8 GND. THW. (1) 3" CONDUIT ONLY, WITH PULLSTRING, UNLESS OTHERWISE NOTED
- SCHOOL FLASHER CONDUIT (1) 2"C 1#8 AND PULLSTRING
- STREET LIGHT
- FUTURE STREET LIGHT
- EXISTING STREET LIGHT
- METER SERVICE PEDESTAL
- SERVICE PEDESTAL AND N.P.CO. TRANSFORMER
- CIRCUIT DESIGNATION: (CONTAINED WITHIN BOUNDARY) N = SERVICE PEDESTAL X = CIRCUIT
- #3-1/2 PULLBOX, MARKED "STREET LIGHTING" UNLESS OTHERWISE NOTED.
- #5 PULLBOX, MARKED "TRAFFIC SIGNAL" UNLESS OTHERWISE NOTED.
- ▨ P30 PULLBOX, MARKED "TRAFFIC SIGNAL" UNLESS OTHERWISE NOTED.
- ▩ NEVADA POWER TRANSFORMER AND METER SERVICE PEDESTAL
- ▭ CONTROL CABINET FOR FUTURE TRAFFIC SIGNALS

CHARLESTON BOULEVARD



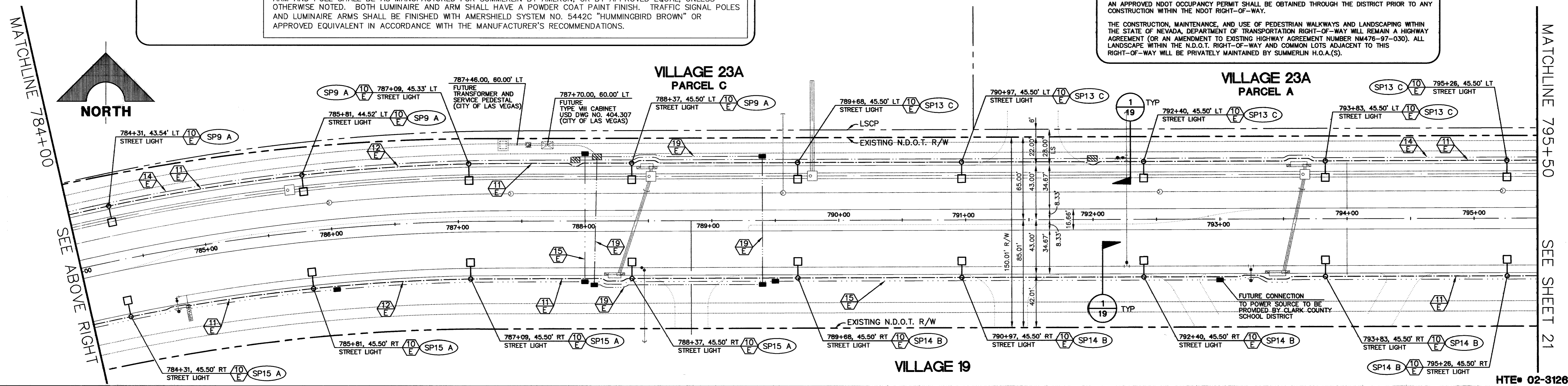
Avoid cutting underground utility lines. It's costly.
Call before you Dig.
1-800-227-2600
UNDERGROUND SERVICE ALERT (USA)

Avoid hitting overhead power lines. It's costly.
CALL BEFORE YOU DO OVERHEAD.
CALL 1-702-593-6111

NOTE:
N.D.O.T. ENCROACHMENT PERMIT(S) REQUIRED FOR PROJECT CONSTRUCTION
AN APPROVED NDOT OCCUPANCY PERMIT SHALL BE OBTAINED THROUGH THE DISTRICT PRIOR TO ANY CONSTRUCTION WITHIN THE NDOT RIGHT-OF-WAY.
THE CONSTRUCTION, MAINTENANCE, AND USE OF PEDESTRIAN WALKWAYS AND LANDSCAPING WITHIN THE STATE OF NEVADA, DEPARTMENT OF TRANSPORTATION RIGHT-OF-WAY WILL REMAIN A HIGHWAY AGREEMENT (OR AN AMENDMENT TO EXISTING HIGHWAY AGREEMENT NUMBER N4478-97-030). ALL LANDSCAPE WITHIN THE N.D.O.T. RIGHT-OF-WAY AND COMMON LOTS ADJACENT TO THIS RIGHT-OF-WAY WILL BE PRIVATELY MAINTAINED BY SUMMERLIN H.O.A.(S).

Traffic Management Division
Clark County Public Works
ACCEPTED
By: _____ Date: _____
Traffic Management

G.C. WALLACE, INC.
Engineers/Planners/Surveyors
165 SOUTH PARKROW BLVD., LAS VEGAS, NEVADA 89146
OFFICE: (702) 804-2000, FAX: (702) 804-2289
SUMMERLIN OFFICE 10000 CHARLESTON BLVD., STE. 130
OFFICE: (702) 804-2160, FAX: (702) 804-2285
E: V23A.Charleston.Boulevard.V23C920.dwg



SUMMERLIN
VILLAGE 19/23A CHARLESTON BOULEVARD IMPROVEMENTS
CHARLESTON BOULEVARD
MASTER CONDUIT AND ELECTRICAL PLAN II
SHEET **20**
HTE# 02-31260 20 OF 21 SHTS
JOB NO. 62023.240