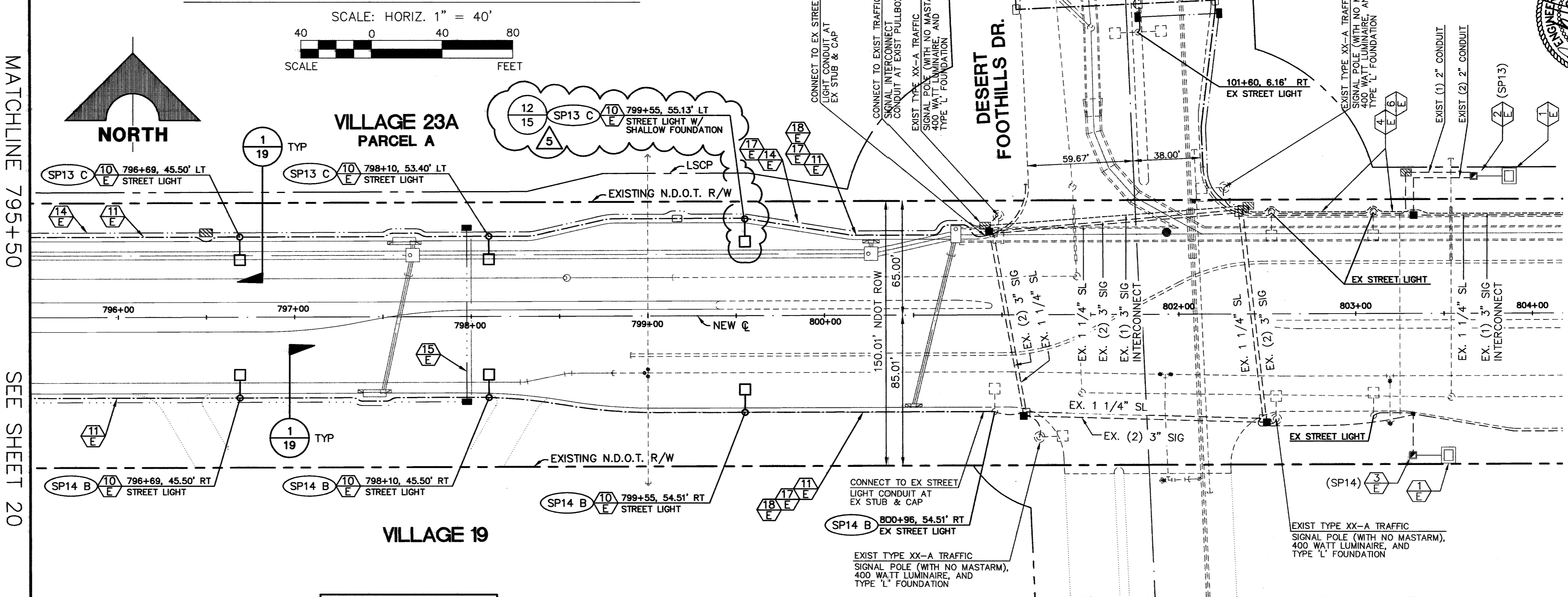


NOTE:
 1. ALL CONCRETE SHALL BE TYPE V. CONCRETE CLASS SHALL BE IN ACCORDANCE WITH THE LATEST EDITION OF THE UNIFORM STANDARD SPECIFICATIONS FOR PUBLIC WORKS CONSTRUCTION OFF-SITE IMPROVEMENTS, CLARK COUNTY AREA, NEVADA.
 2. PLACE CONCRETE AGAINST UNDISTURBED EARTH OR 95% COMPACTED BACKFILL (10' MIN. RADIUS AROUND FOUNDATION).
 3. CALCULATION SHEETS AND DETAILS WILL BE SUBMITTED, SIGNED AND SEALED BY A REGISTERED PROFESSIONAL ENGINEER TO CLARK COUNTY FOR REVIEW AND APPROVAL FOR FOUNDATION DESIGNS OTHER THAN SHOWN PER THIS STANDARD.

STREET LIGHT POLE FOUNDATION (S.I.S. DWG NO. E-26) 2
 NOT TO SCALE

CHARLESTON BOULEVARD



MATCHLINE 795+50
 SEE SHEET 20

Traffic Management Division
 Clark County Public Works
ACCEPTED
 By: _____ Date: _____
 ACCEPTANCE OF THESE PLANS SHALL NOT BE CONSTRUED TO BE A PERMIT FOR OR AN APPROVAL OF ANY VIOLATION OF STATE OR COUNTY LAW, SPECIFICATIONS, OR THE MANUAL ON UNIFORM TRAFFIC CONTROL DEVICES.

Avoid cutting underground utility lines. It's costly.
Call before you Dig.
 1-800-227-2600
 UNDERGROUND SERVICE ALERT (USA)

Avoid hitting overhead power lines. It's costly.
CALL BEFORE YOU DIG OVERHEAD
 CALL 1-702-593-6111

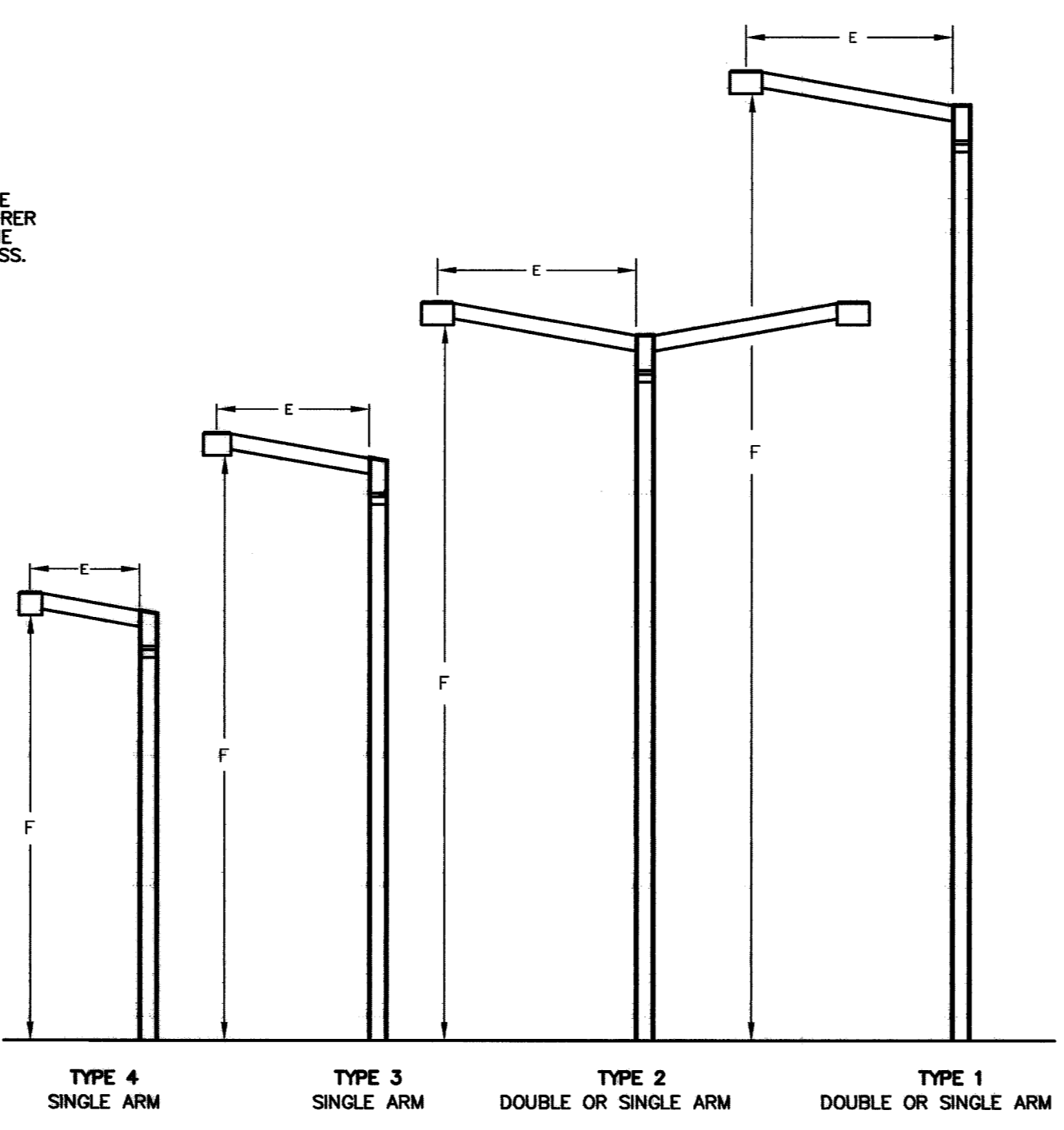
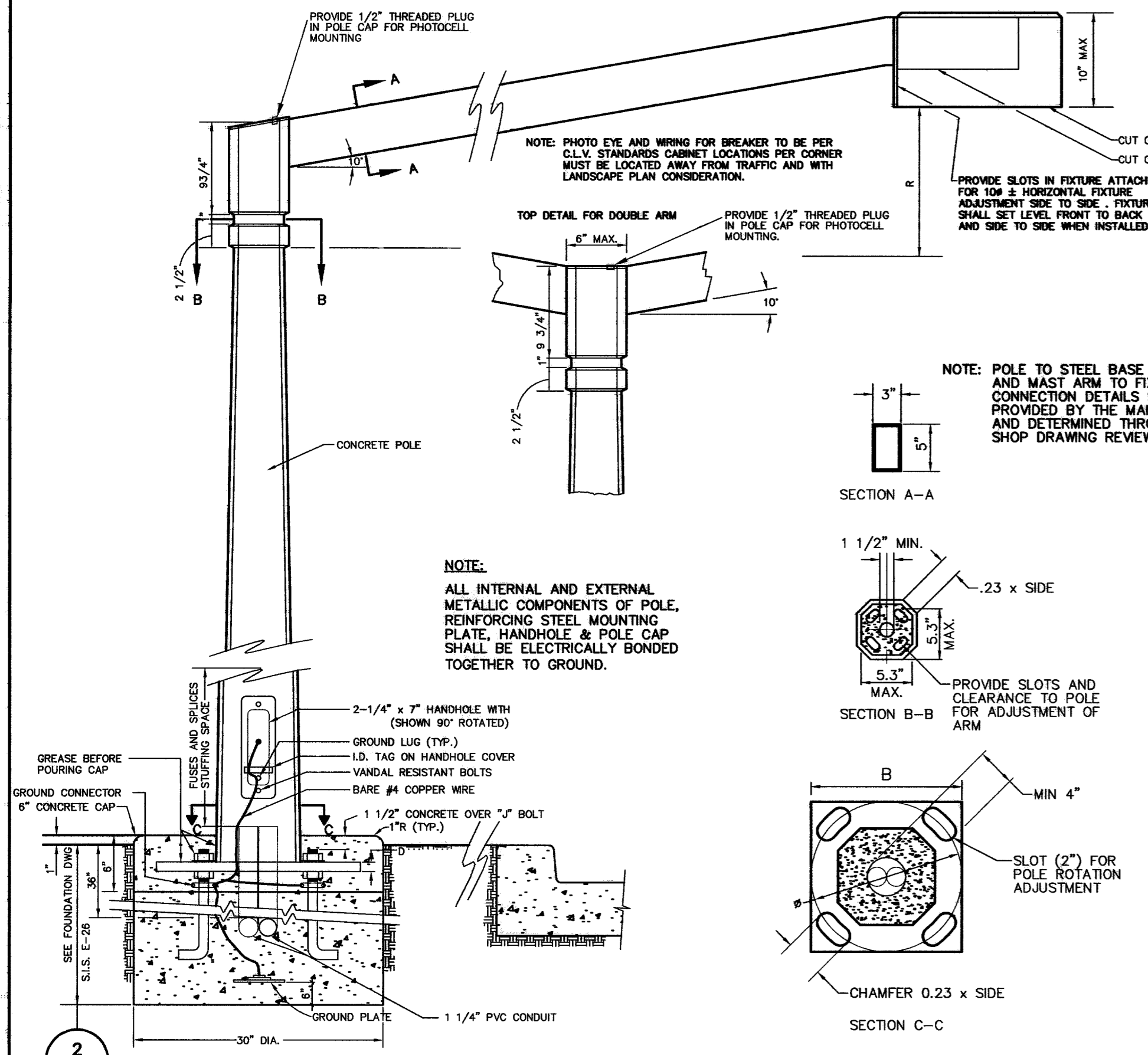
LEGEND

—	STREET LIGHT CONDUIT (1) 1-1/4", 2#4, 1#8 GND. THW. UNLESS OTHERWISE NOTED	(N)	SERVICE PEDESTAL AND N.P.CO. TRANSFORMER
---	TRAFFIC INTERCONNECT CONDUIT (1) 4" CONDUIT W/ 3" RADIUS SWEEPS INTO PULLBOXES FOR FUTURE FIBER OPTIC.	(NX)	CIRCUIT DESIGNATION: (CONTAINED WITHIN BOUNDARY) N = SERVICE PEDESTAL X = CIRCUIT
---	TRAFFIC SIGNAL CONDUIT (1) 3", 2#10, 1#8 GND. THW. (1) 3" CONDUIT ONLY, WITH PULLSTRING, UNLESS OTHERWISE NOTED	□	#3-1/2 PULLBOX, MARKED "STREET LIGHTING" UNLESS OTHERWISE NOTED.
---	SCHOOL FLASHER CONDUIT (1) 2" 1#8 AND PULLSTRING	■	#5 PULLBOX, MARKED "TRAFFIC SIGNAL" UNLESS OTHERWISE NOTED.
○	TRAFFIC SIGNAL POLE WITH STREET LIGHT	▨	P30 PULLBOX, MARKED "TRAFFIC SIGNAL" UNLESS OTHERWISE NOTED.
○	STREET LIGHT	■	NEVADA POWER TRANSFORMER AND METER SERVICE PEDESTAL
○	FUTURE STREET LIGHT	□	CONTROL CABINET FOR FUTURE TRAFFIC SIGNALS
○	EXISTING STREET LIGHT		
■	METER SERVICE PEDESTAL		

REGISTERED PROFESSIONAL ENGINEER
 STATE OF NEVADA
TRUCKEE D. HUNSAKER
 Exp. 06/30/2008
 ELECTRICAL
 License No. 12817
 DATE: 12-14-04

FOR ELECTRICAL COMPONENTS ONLY

NOTE:
 N.D.O.T. ENCROACHMENT PERMIT(S) REQUIRED FOR PROJECT CONSTRUCTION
 AN APPROVED NDOT OCCUPANCY PERMIT SHALL BE OBTAINED THROUGH THE DISTRICT PRIOR TO ANY CONSTRUCTION WITHIN THE NDOT RIGHT-OF-WAY.
 THE CONSTRUCTION, MAINTENANCE, AND USE OF PEDESTRIAN WALKWAYS AND LANDSCAPING WITHIN THE STATE OF NEVADA, DEPARTMENT OF TRANSPORTATION RIGHT-OF-WAY WILL REMAIN A HIGHWAY AGREEMENT (OR AN AMENDMENT TO EXISTING HIGHWAY AGREEMENT NUMBER MM476-97-030). ALL LANDSCAPE WITHIN THE N.D.O.T. RIGHT-OF-WAY AND COMMON LOTS ADJACENT TO THIS RIGHT-OF-WAY WILL BE PRIVATELY MAINTAINED BY SUMMERLIN H.O.A.(S).



STREET LIGHT POLE, ARM AND FIXTURE DETAIL 3
 NOT TO SCALE

STREET LIGHT TECHNICAL DESIGN REQUIREMENTS 1
 NOT TO SCALE

Luminaire
 k. Luminaire performance shall include testing in accordance with current IES test procedures.
 l. The luminaire/lamp combination shall provide a light distribution meeting the requirements for an IES classification: Type I, Type II, and/or Type III, medium, cutoff.
 m. Average maintained illuminance and uniformity of illuminance shall conform to IES recommendations.
 n. The total downward coefficient of utilization for luminaire shall be no less than 72%.
 o. The total contribution of light above 75-degree vertical angle shall not exceed 3% of rated lamp lumens on the streetside and 0.9% on the houseside.
 p. The maximum candlepower at a vertical angle of 80 degrees and above in any plane shall not be greater than 59 candela per 1,000 rated lamp lumens. Nadir candlepower shall not exceed 145 candela per 1,000 rated lamp lumens.
 q. When the luminaire is equipped with the corresponding lamp rating and mounted at the specified height above the pavement, the luminaire shall provide, within +/-5% the recommended initial minimum horizontal foot-candle values on the pavement.
 r. Fixtures shall be constructed with proper gasketing and corrosion resistant materials and/or coatings. Construct metal fixture channels, and caps, interior barriers, reflectors, etc., of adequate gauge and material.

Wiring
 s. All fixture wire shall conform to the latest requirements of Underwriters' Laboratories and be concealed within the fixture construction wiring from base of pole to luminaire must be 10-2UF with ground.
 t. High-intensity discharge ballasts shall be constant-wattage magnetic regulating per ANSI C78.1351 trapezoid limitation and power factor 90% minimum.
 u. Lamps shall bear labels of General Electric, or Sylvania, and be per General Electric lamp designations shown in the fixture schedule. All lamps shall be of the type indicated on the fixture schedule. In case of conflict between submitted shop drawing and fixture schedule on the drawing, the shop drawings shall prevail.

Color and Finish
 v. Fixture, mast arm, and pole cap shall all have matching color bronze anodized aluminum finish, aluminum association architectural Class 1.
 w. Tests to verify compliance with the above specs shall be performed by a certified independent laboratory.

Independent Testing

Color
 f. Summerlin beige Ameron #2123 dated 6-3-88, Sample No. 361. All pole aggregate color to be matched by pre-approved samples. Purchaser will provide color sample and final color approval. Exterior surface sealer shall be a clean urethane "lithonthane" as manufactured by L. M. Scofield Company or approved equal.

Cement
 g. Portland Cement shall conform to the requirements of ASTM C150, Type III. Aggregates shall conform to ASTM C33 and C330 except that the requirements for gradation shall not apply. Water used for curing, washing aggregates and mixing concrete shall be free of oils, organic matter, and other substances in amounts that may be deleterious to concrete and it shall not contain concentrations of chloride ions in excess of 500 parts per million of sulfate ions in excess of 1,000 parts per million.
 h. Admixtures shall be used for color conditioning only and shall comply with UBC Standard No. 26-12. The pigment component must consist of pure mineral oxides only.

Steel
 i. Seven strand minimum, uncoated, stress relieved, prestressing steel shall conform to ASTM A416. Non-tensioned reinforcement shall conform to ASTM A615 and ASTM A82. Base plates, anchor bolts and top mount couplings shall conform to ASTM specifications.
 j. Cast aluminum for pole cap shall conform to ASTM SF 70A. Extruded aluminum shapes for luminaire arms shall conform to the Aluminum Association Designation 6063-T6.

Aluminum

STATE OF NEVADA
 REGISTERED PROFESSIONAL ENGINEER
 TRUCKEE D. HUNSAKER
 Exp. 06/30/2008
 ELECTRICAL
 License No. 12817
 DATE: 12/14/04

DESIGN: DFF
 DRAWN: CBW
 CHECK: CBW
 ISSUE DATE: 12-14-04
 ISSUE EDITOR: [Signature]
 PLOT DATE: 12-14-04
 PLOT TIME: 08:12:43
 PLOT SCALE: AS SHOWN

G.C. WALLACE, INC.
 Engineers/Planners/Surveyors
 1555 SOUTH RAINBOW BLVD., LAS VEGAS, NEVADA 89146
 OFFICE: (702) 804-2000, FAX: (702) 804-2289
 MOBILE: (702) 804-2160, FAX: (702) 804-2285
 E: V23A@charlestonnv.com

SUMMERLIN
 VILLAGE 19/23A CHARLESTON BOULEVARD IMPROVEMENTS
 CHARLESTON BOULEVARD
 MASTER CONDUIT AND ELECTRICAL PLAN III
 SHEET 21
 JOB NO. 62023.240