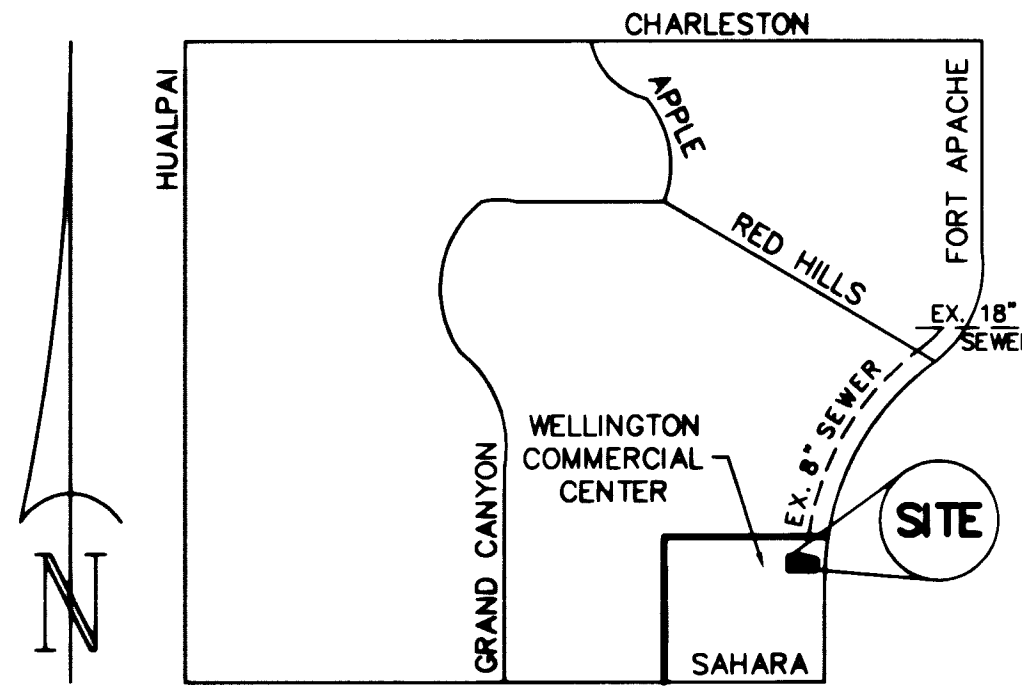
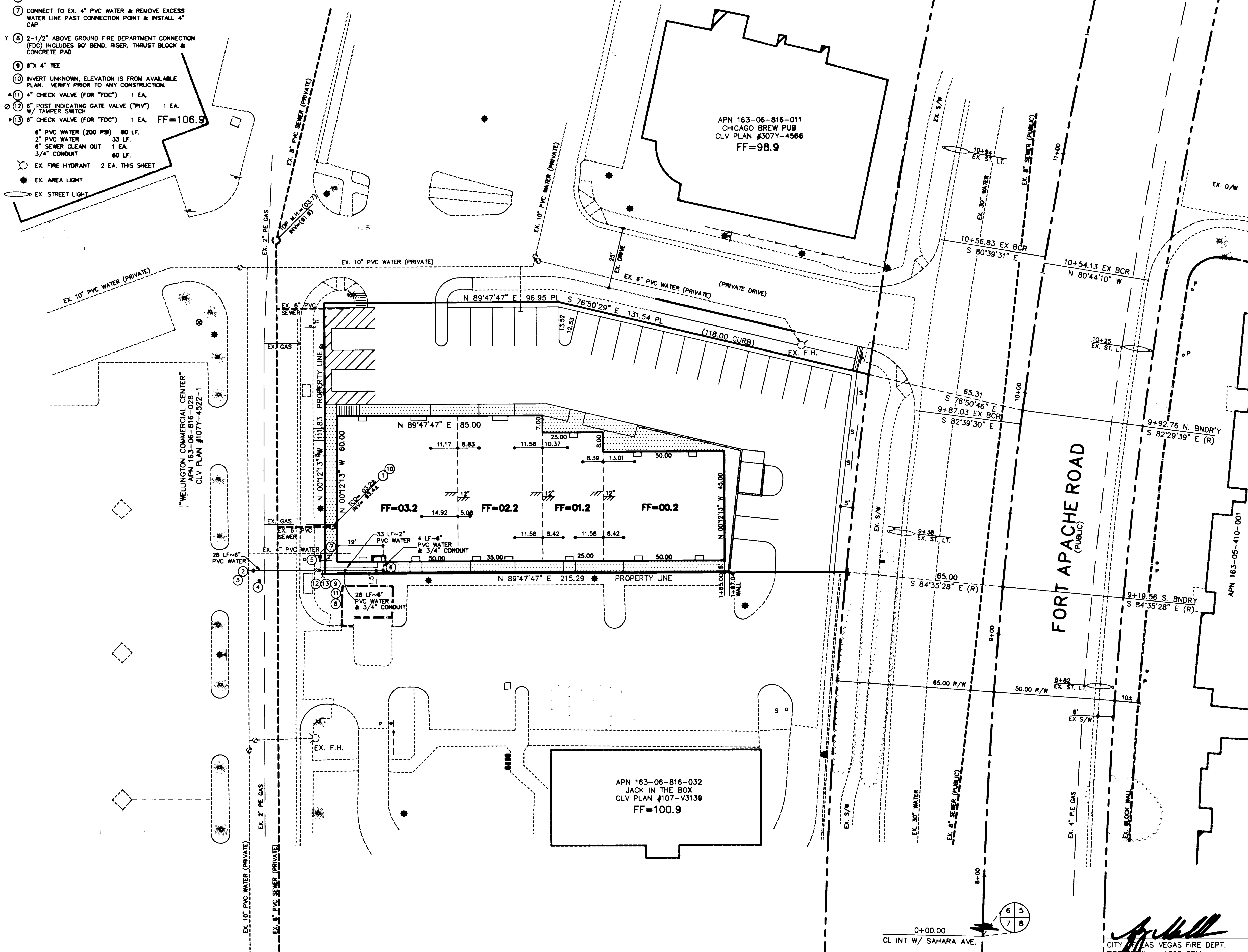


**LEGEND & QUANTITY ESTIMATE**

- ① INSTALL 6" SEWER CLEAN OUT & REMOVE EXCESS PVC SEWER LATERAL
- ② 6" TAPPING VALVE 1 EA.
- ③ 10"x 6" TAPPING TEE 1 EA.
- ④ AC PAVEMENT PATCH (MATCH EX. PAVEMENT SECTION)
- ⑤ 2" METER BOX, BALL ANGLE METER STOP PER UDACS PLATE #1C
- ⑥ 6" 90° BEND 1 EA.
- ⑦ CONNECT TO EX. 4" PVC WATER & REMOVE EXCESS WATER LINE PAST CONNECTION POINT & INSTALL 4" CAP
- ⑧ 2-1/2" ABOVE GROUND FIRE DEPARTMENT CONNECTION (FDC) INCLUDES 90° BEND, RISER, THRUST BLOCK & CONCRETE PAD
- ⑨ 6"x 4" TEE
- ⑩ INVERT UNKNOWN, ELEVATION IS FROM AVAILABLE PLAN. VERIFY PRIOR TO ANY CONSTRUCTION.
- ⑪ 4" CHECK VALVE (FOR "FDC") 1 EA.
- ⑫ 6" POST INDICATING GATE VALVE ("PIV") 1 EA. / TAMPER SWITCH
- ⑬ 6" CHECK VALVE (FOR "FDC") 1 EA. FF=106.9
- ⑭ 6" PVC WATER (200 PSI) 80 LF.
- ⑮ 2" PVC WATER 33 LF.
- ⑯ 6" SEWER CLEAN OUT 1 EA.
- ⑰ 3/4" CONDUIT 80 LF.
- ⑱ EX. FIRE HYDRANT 2 EA. THIS SHEET
- ⑲ EX. AREA LIGHT
- ⑳ EX. STREET LIGHT

Call before you Dig.  
1-800-227-2600



**LOCATION**

8" SEWER IN FORT APACHE DISCHARGES INTO 18" SEWER NORTH OF THE INTERSECTION OF FORT APACHE & RED HILLS ROAD

**BASIS OF BEARINGS**

SOUTH 89°47'47" WEST, BEING THE SOUTH LINE OF THE SOUTHEAST QUARTER (SE 1/4) OF SECTION 6, TOWNSHIP 21 SOUTH, RANGE 60 EAST M.D.M., CITY OF LAS VEGAS, CLARK COUNTY, NEVADA. AS SHOWN ON THAT CERTAIN PLAT OF AMENDED PECCOLE RANCH, ON FILE IN THE OFFICE OF THE COUNTY RECORDER, CLARK COUNTY, NEVADA, IN BOOK 82 OF PLATS, AT PAGE 86.

**BENCHMARK**

CITY OF LAS VEGAS BENCHMARK #1LV105WS, BEING A RIVET AND PLATE IN TOP OF CURB, NORTHEAST RETURN OF FORT APACHE ROAD AND SAHARA AVENUE. ELEV.=850.0740 METERS (2788.95 FEET) NAVD 1988

**SEWER CONTRIBUTION**

AVERAGE FLOW = 0.0013 MGD  
PEAK FLOW = 0.0045 MGD

**LAS VEGAS FIRE DEPT.**

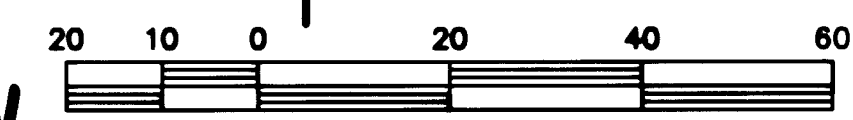
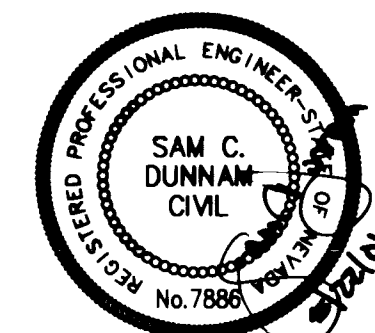
FIRE FLOW REQUIREMENT IS: 1500 gallons per minute at 20 psi residual pressure.

**BASED ON:**

SQUARE FOOTAGE:	8,675 square feet
LARGEST AREA BETWEEN 4-HOUR AREA SEPARATION WALLS:	8,675 square feet
BUILDING HEIGHT:	25-6 feet
NUMBER OF STORIES:	ONE floor
TYPE OF CONSTRUCTION:	V-N
OCCUPANCY:	M
FULL AUTOMATIC FIRE SPRINKLER SYSTEM:	YES

**NOTE**

ALL DIMENSIONS TO UTILITIES ARE TO CENTERLINE OF PIPE UNLESS OTHERWISE NOTED  
CONTRACTOR SHALL VERIFY HORIZONTAL AND VERTICAL ALIGNMENT OF EXISTING UTILITIES AND NOTIFY THE ENGINEER IMMEDIATELY OF ANY DISCREPANCIES PRIOR TO CONSTRUCTION



DATE 6/19/01

CITY OF LAS VEGAS FIRE DEPT. FIRE FLOW = 1500 GPM

NO.	DATE	REVISION

**DUNNAM CIVIL ENGINEERS**  
3401 WEST OAKLAND ROAD SUITE 101 LAS VEGAS, NV 89102  
702 738-1008  
702 387-8868 FAX

**VILLAGE SQUARE - PAD L**  
UTILITY PLAN