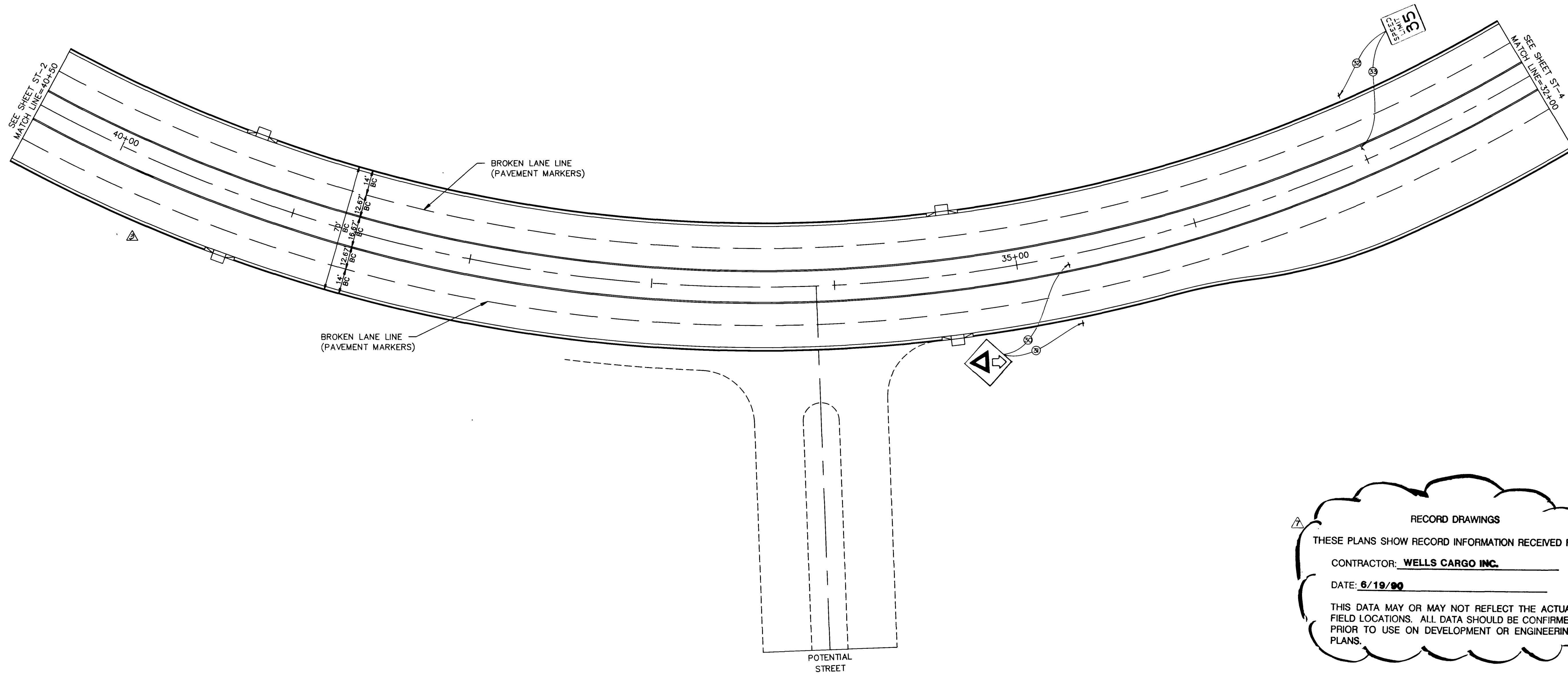


JOB NO. 620.222

894 DIETRICH-POST 60228



RECORD DRAWINGS

THESE PLANS SHOW RECORD INFORMATION RECEIVED FROM:
 CONTRACTOR: WELLS CARGO INC.
 DATE: 6/19/89

THIS DATA MAY OR MAY NOT REFLECT THE ACTUAL FIELD LOCATIONS. ALL DATA SHOULD BE CONFIRMED PRIOR TO USE ON DEVELOPMENT OR ENGINEERING PLANS.

TOWN CENTER DRIVE
 1"=30'
 VILLAGE CENTER CIRCLE

NOTE: THESE PLANS ARE FOR THE PURPOSE OF ROADWAY IMPROVEMENTS AND UTILITIES (PAVEMENT WITH BASE, CURB AND GUTTER, STORM DRAIN, WATER, SEWER, ETC.). ALL ROADWAY AND LANDSCAPE AREAS HAVE BEEN PREVIOUSLY ROUGH GRADED. ANY LIMITS OF ROUGH GRADING SHOWN ARE FOR REFERENCE ONLY. FOR SCOPE AND LIMITS OF ROUGH GRADING, SEE "TOWN CENTER DRIVE - ROUGH GRADING" PACKAGE. FOR FINISH GRADING OF LANDSCAPE AREAS, SEE LANDSCAPE PACKAGE BY SMA GROUP.

2/12/89

REV	DATE	DESCRIPTION
1	2/12/89	ISSUED FOR BID
2	4/12/89	ISSUED FOR CONSTRUCTION
3	5/12/89	ISSUED FOR CONSTRUCTION
4	5/12/89	ISSUED FOR CONSTRUCTION
5	5/12/89	ISSUED FOR CONSTRUCTION
6	5/12/89	ISSUED FOR CONSTRUCTION
7	5/12/89	ISSUED FOR CONSTRUCTION
8	5/12/89	ISSUED FOR CONSTRUCTION
9	5/12/89	ISSUED FOR CONSTRUCTION
10	5/12/89	ISSUED FOR CONSTRUCTION
11	5/12/89	ISSUED FOR CONSTRUCTION
12	5/12/89	ISSUED FOR CONSTRUCTION
13	5/12/89	ISSUED FOR CONSTRUCTION
14	5/12/89	ISSUED FOR CONSTRUCTION
15	5/12/89	ISSUED FOR CONSTRUCTION
16	5/12/89	ISSUED FOR CONSTRUCTION
17	5/12/89	ISSUED FOR CONSTRUCTION
18	5/12/89	ISSUED FOR CONSTRUCTION
19	5/12/89	ISSUED FOR CONSTRUCTION
20	5/12/89	ISSUED FOR CONSTRUCTION
21	5/12/89	ISSUED FOR CONSTRUCTION
22	5/12/89	ISSUED FOR CONSTRUCTION
23	5/12/89	ISSUED FOR CONSTRUCTION
24	5/12/89	ISSUED FOR CONSTRUCTION
25	5/12/89	ISSUED FOR CONSTRUCTION
26	5/12/89	ISSUED FOR CONSTRUCTION
27	5/12/89	ISSUED FOR CONSTRUCTION
28	5/12/89	ISSUED FOR CONSTRUCTION
29	5/12/89	ISSUED FOR CONSTRUCTION
30	5/12/89	ISSUED FOR CONSTRUCTION
31	5/12/89	ISSUED FOR CONSTRUCTION
32	5/12/89	ISSUED FOR CONSTRUCTION
33	5/12/89	ISSUED FOR CONSTRUCTION
34	5/12/89	ISSUED FOR CONSTRUCTION
35	5/12/89	ISSUED FOR CONSTRUCTION
36	5/12/89	ISSUED FOR CONSTRUCTION
37	5/12/89	ISSUED FOR CONSTRUCTION
38	5/12/89	ISSUED FOR CONSTRUCTION
39	5/12/89	ISSUED FOR CONSTRUCTION
40	5/12/89	ISSUED FOR CONSTRUCTION
41	5/12/89	ISSUED FOR CONSTRUCTION
42	5/12/89	ISSUED FOR CONSTRUCTION
43	5/12/89	ISSUED FOR CONSTRUCTION
44	5/12/89	ISSUED FOR CONSTRUCTION
45	5/12/89	ISSUED FOR CONSTRUCTION
46	5/12/89	ISSUED FOR CONSTRUCTION
47	5/12/89	ISSUED FOR CONSTRUCTION
48	5/12/89	ISSUED FOR CONSTRUCTION
49	5/12/89	ISSUED FOR CONSTRUCTION
50	5/12/89	ISSUED FOR CONSTRUCTION
51	5/12/89	ISSUED FOR CONSTRUCTION
52	5/12/89	ISSUED FOR CONSTRUCTION
53	5/12/89	ISSUED FOR CONSTRUCTION
54	5/12/89	ISSUED FOR CONSTRUCTION
55	5/12/89	ISSUED FOR CONSTRUCTION
56	5/12/89	ISSUED FOR CONSTRUCTION
57	5/12/89	ISSUED FOR CONSTRUCTION
58	5/12/89	ISSUED FOR CONSTRUCTION
59	5/12/89	ISSUED FOR CONSTRUCTION
60	5/12/89	ISSUED FOR CONSTRUCTION
61	5/12/89	ISSUED FOR CONSTRUCTION
62	5/12/89	ISSUED FOR CONSTRUCTION
63	5/12/89	ISSUED FOR CONSTRUCTION
64	5/12/89	ISSUED FOR CONSTRUCTION
65	5/12/89	ISSUED FOR CONSTRUCTION
66	5/12/89	ISSUED FOR CONSTRUCTION
67	5/12/89	ISSUED FOR CONSTRUCTION
68	5/12/89	ISSUED FOR CONSTRUCTION
69	5/12/89	ISSUED FOR CONSTRUCTION
70	5/12/89	ISSUED FOR CONSTRUCTION
71	5/12/89	ISSUED FOR CONSTRUCTION
72	5/12/89	ISSUED FOR CONSTRUCTION
73	5/12/89	ISSUED FOR CONSTRUCTION
74	5/12/89	ISSUED FOR CONSTRUCTION
75	5/12/89	ISSUED FOR CONSTRUCTION
76	5/12/89	ISSUED FOR CONSTRUCTION
77	5/12/89	ISSUED FOR CONSTRUCTION
78	5/12/89	ISSUED FOR CONSTRUCTION
79	5/12/89	ISSUED FOR CONSTRUCTION
80	5/12/89	ISSUED FOR CONSTRUCTION
81	5/12/89	ISSUED FOR CONSTRUCTION
82	5/12/89	ISSUED FOR CONSTRUCTION
83	5/12/89	ISSUED FOR CONSTRUCTION
84	5/12/89	ISSUED FOR CONSTRUCTION
85	5/12/89	ISSUED FOR CONSTRUCTION
86	5/12/89	ISSUED FOR CONSTRUCTION
87	5/12/89	ISSUED FOR CONSTRUCTION
88	5/12/89	ISSUED FOR CONSTRUCTION
89	5/12/89	ISSUED FOR CONSTRUCTION
90	5/12/89	ISSUED FOR CONSTRUCTION
91	5/12/89	ISSUED FOR CONSTRUCTION
92	5/12/89	ISSUED FOR CONSTRUCTION
93	5/12/89	ISSUED FOR CONSTRUCTION
94	5/12/89	ISSUED FOR CONSTRUCTION
95	5/12/89	ISSUED FOR CONSTRUCTION
96	5/12/89	ISSUED FOR CONSTRUCTION
97	5/12/89	ISSUED FOR CONSTRUCTION
98	5/12/89	ISSUED FOR CONSTRUCTION
99	5/12/89	ISSUED FOR CONSTRUCTION
100	5/12/89	ISSUED FOR CONSTRUCTION

RECOMMENDED
 DATE: 5/12/89
 DRAWN BY: [Signature]
 CHECKED BY: [Signature]
 CIVIL ENGINEER

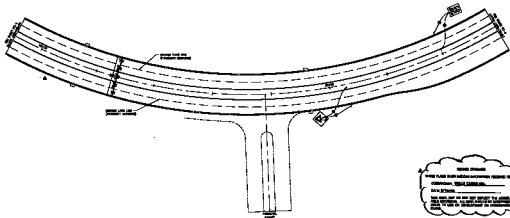
1555 SOUTH RAINBOW BLVD. LAS VEGAS, NEVADA 89102

G.C. WALLACE, INC.
 Engineering/Architecture

VILLAGE CENTER CIRCLE &
 HOWARD HUGHES PROPERTIES
 TOWN CENTER DRIVE PHASE II
 SIGNING AND STRIPING
 STA. 40+50 TO 32+00

SHEET 35
T-3
 OF 37 SHEETS

11-371 107-V1624-2



NOTES:
 1. THIS PLAN SHALL BE USED IN CONJUNCTION WITH THE
 CONTRACT DOCUMENTS.
 2. SEE SHEET T-3
 3. THIS PROJECT IS SUBJECT TO THE LOCAL
 ORDINANCES AND REGULATIONS IN EFFECT
 AT THE TIME OF THE SUBMITTAL OF THIS PLAN.

~~TOWN CENTER DRIVE~~
~~VILLAGE CENTER CIRCLE~~

DATE: _____
 DRAWN BY: _____
 CHECKED BY: _____
 PROJECT NO.: _____



W.A.C. ENGINEERS, INC.
 1000 W. 10th Street
 Oklahoma City, Oklahoma 73106
 Phone: (405) 233-1111
 Fax: (405) 233-1112
 www.wac-engineers.com

PROJECT NO. T-3
 SHEET NO. T-3

SHEET NO. T-3

15-4-11