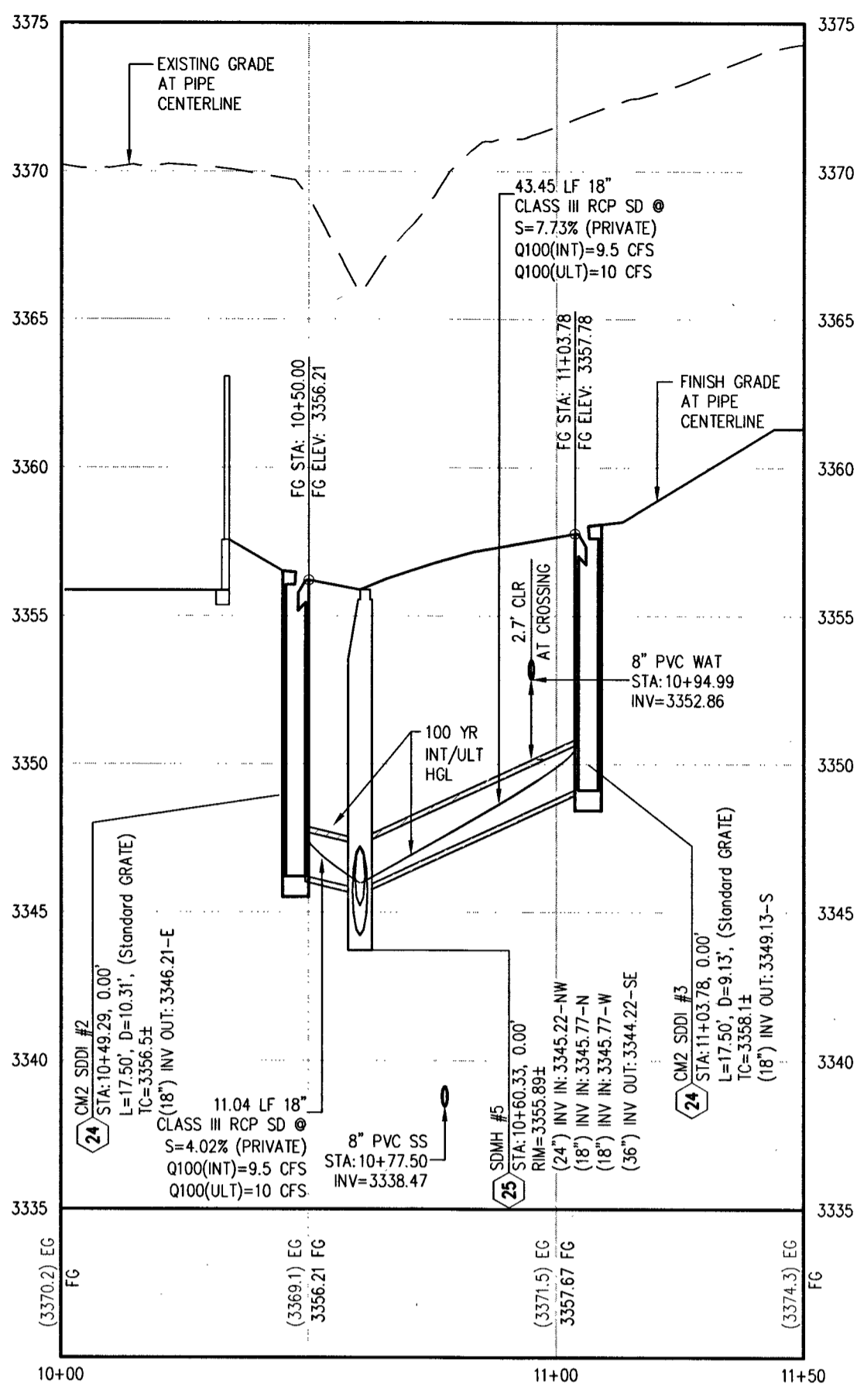
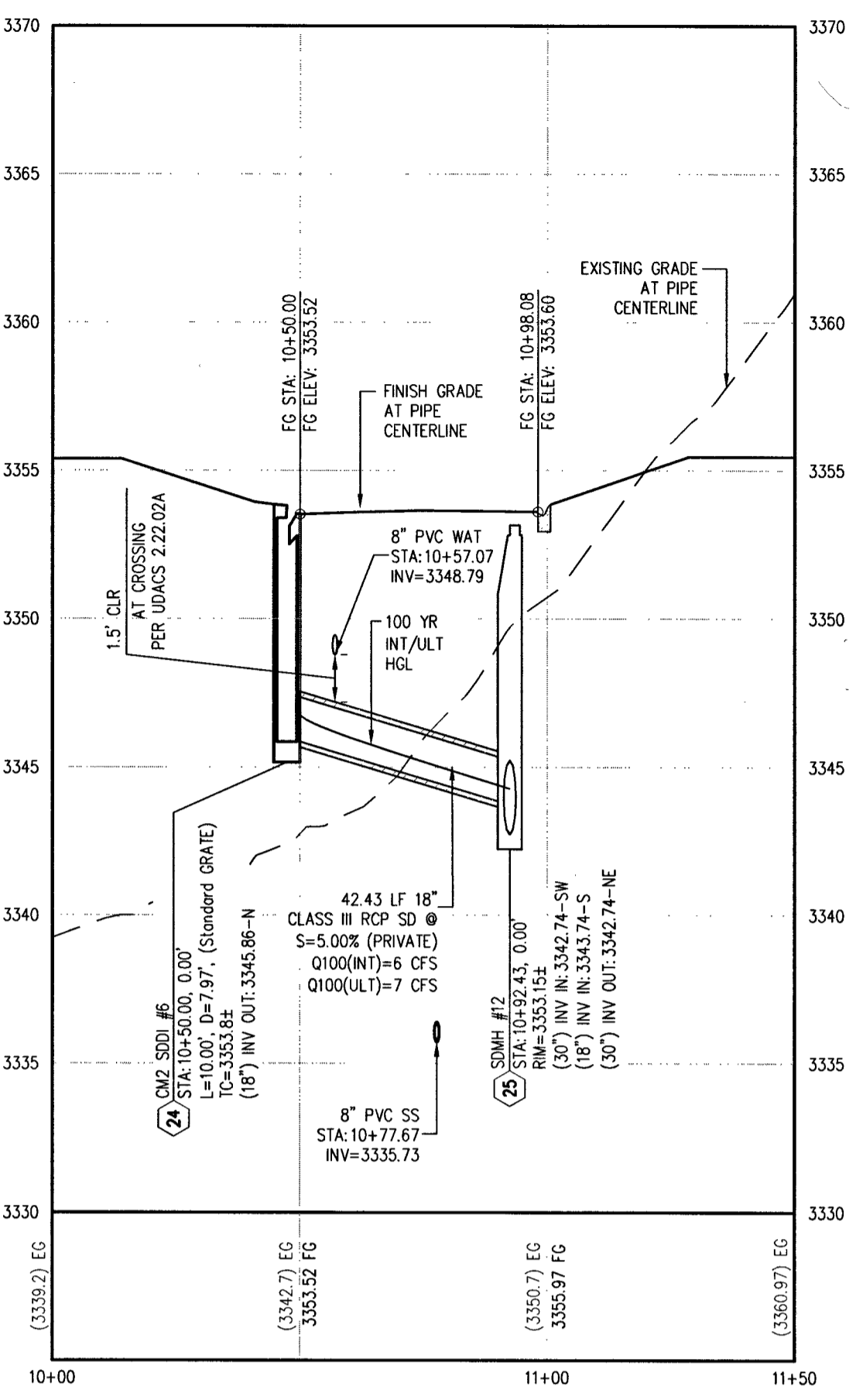


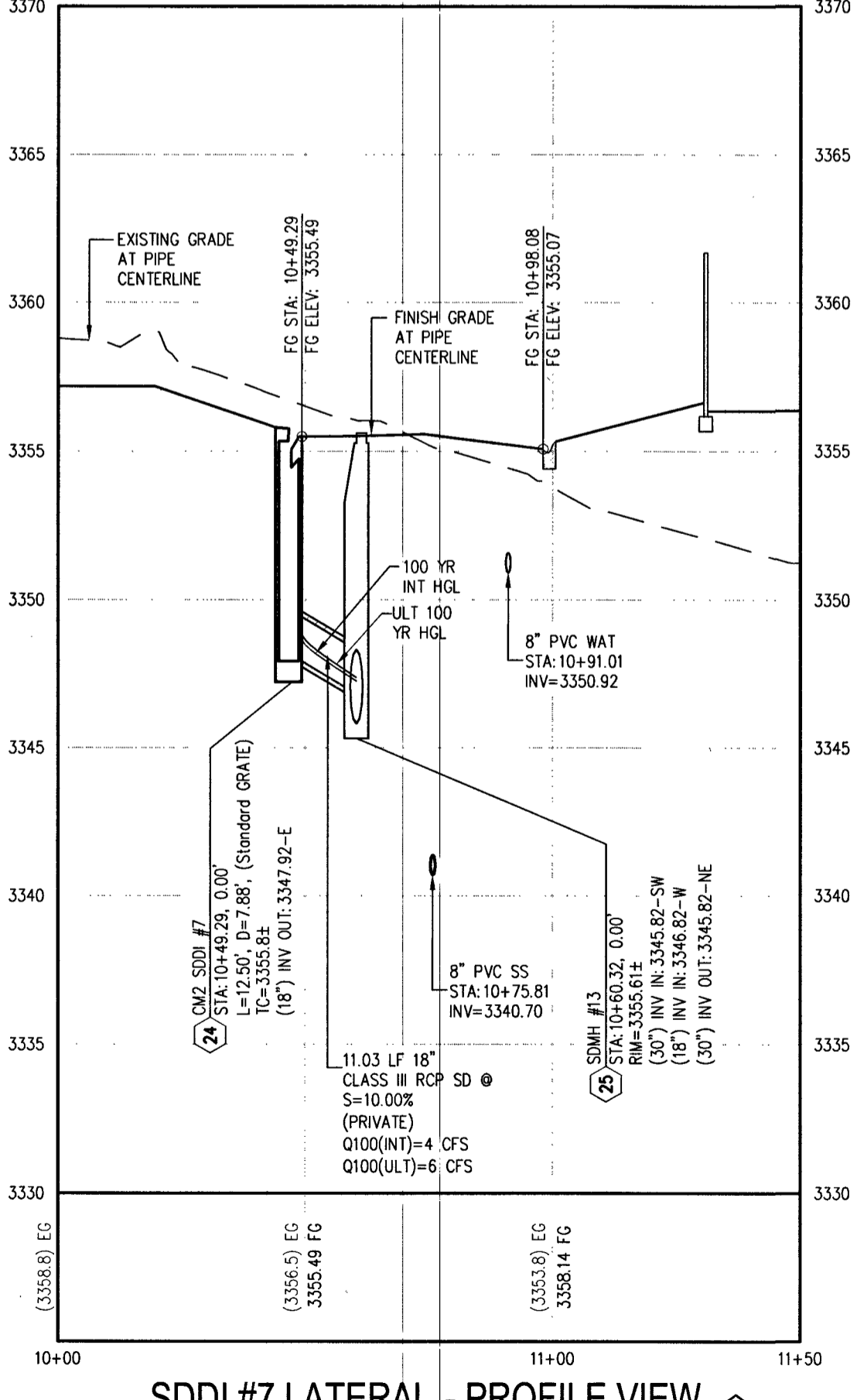
SDDI #4 & SDDI #5 LATERALS - PROFILE VIEW
 HORIZ: 1" = 30'
 VERT: 1" = 5'



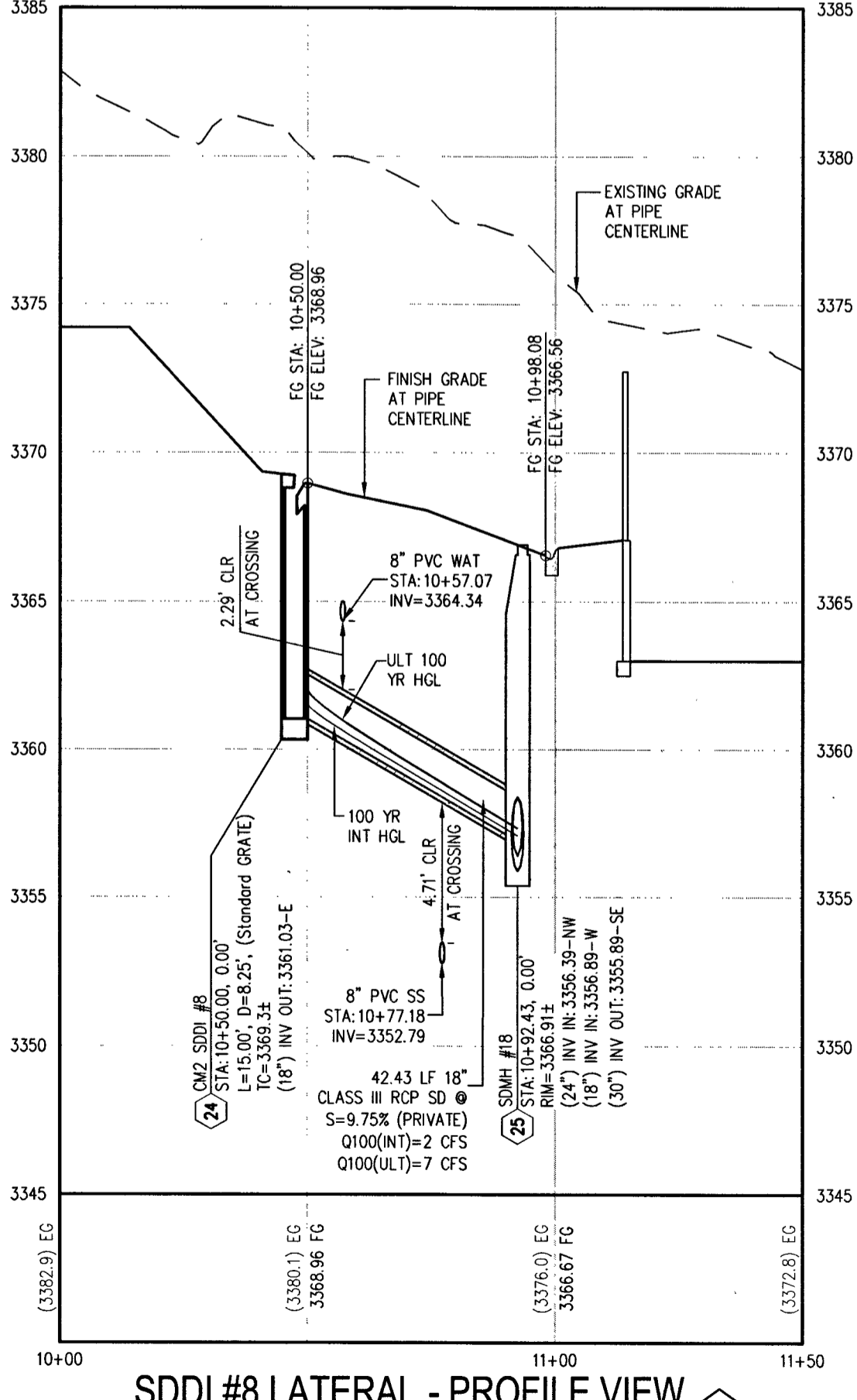
SDDI #2 & SDDI #3 LATERALS - PROFILE VIEW
 HORIZ: 1" = 30'
 VERT: 1" = 5'



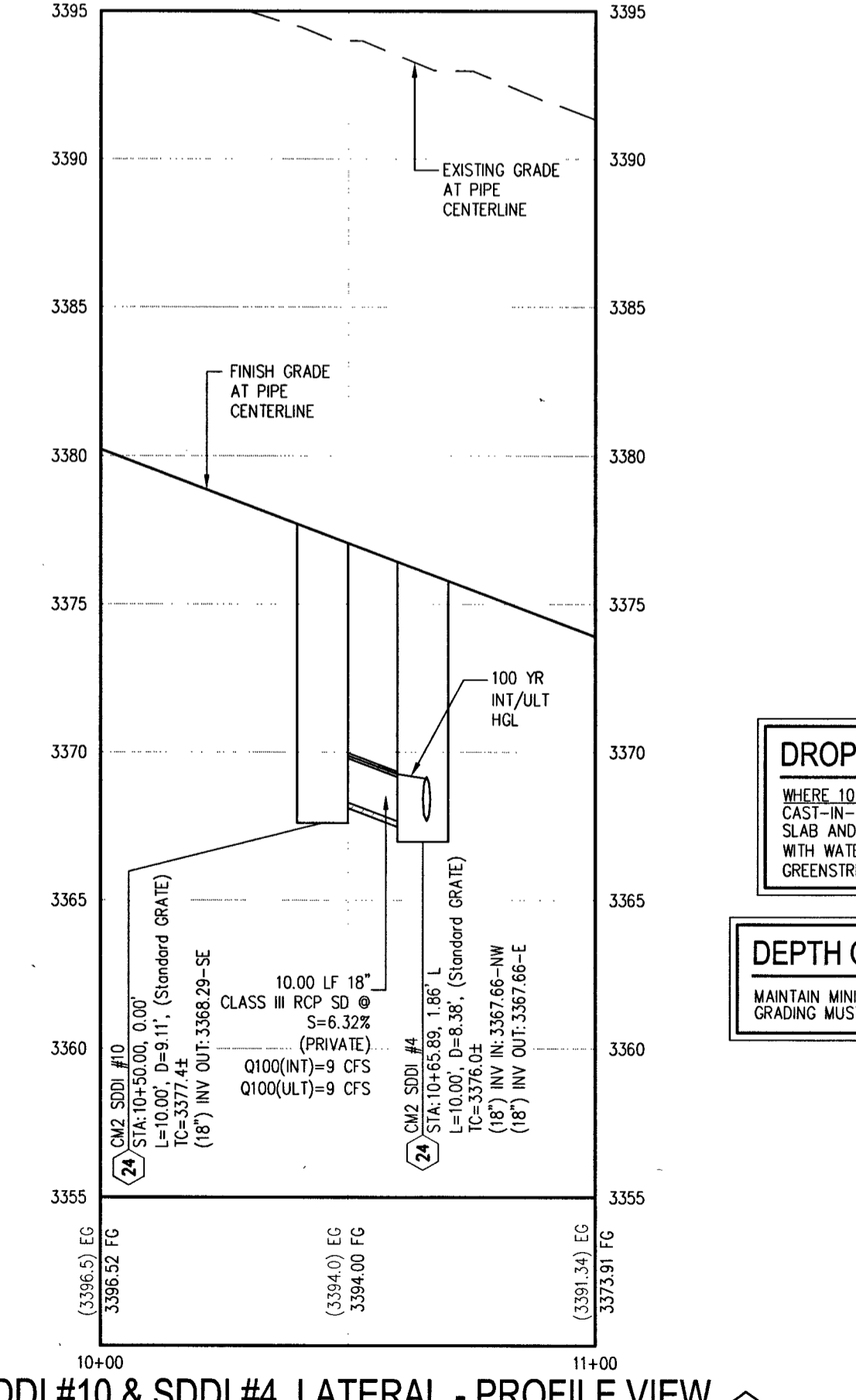
SDDI #6 LATERAL - PROFILE VIEW
 HORIZ: 1" = 30'
 VERT: 1" = 5'



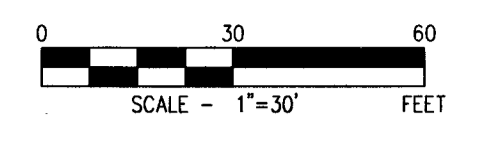
SDDI #7 LATERAL - PROFILE VIEW
 HORIZ: 1" = 30'
 VERT: 1" = 5'



SDDI #8 LATERAL - PROFILE VIEW
 HORIZ: 1" = 30'
 VERT: 1" = 5'



SDDI #10 & SDDI #4 LATERAL - PROFILE VIEW
 HORIZ: 1" = 30'
 VERT: 1" = 5'



CALL SOUTHWEST GAS AT 702-651-2111 FOR STANDBY WHEN EXCAVATING OVER OR NEAR HIGH PRESSURE GAS LINES

SURVEY NOTE
 OWNER RESPONSIBLE TO PROVIDE SURVEY MONUMENTATION AS SHOWN AND TO REPLACE ALL SURVEY MONUMENTATION DAMAGED, DISTURBED, DESTROYED, OR OBLISCURED DURING CONSTRUCTION.

ELEVATION NOTE
 ADD 3300 TO ALL SPOT GRADES WHERE THE HUNDREDS AND THOUSANDS PLACES ARE OMITTED FOR ACTUAL ELEVATION (I.E. 01.00 REPRESENTS 3301.00)

SEWER CONNECTION NOTE
 ONE OR MORE SEGMENTS OF THE DOWNSTREAM SEWER SYSTEM THAT WILL SERVE THIS PROJECT HAS NOT BEEN COMPLETED AND/OR ACCEPTED FOR MAINTENANCE BY THE CITY OF LAS VEGAS. ANY WORK DONE ON THIS PROJECT PRIOR TO THE COMPLETION AND/OR ACCEPTANCE OF THE DOWNSTREAM SEWER SYSTEM(S) SHALL BE DONE AT THE DEVELOPER'S OWN RISK. THE CITY OF LAS VEGAS RESERVES THE RIGHT TO PREVENT THE PHYSICAL CONNECTION OF THIS PROJECT INTO THE DOWNSTREAM SEWER SYSTEM UNTIL ALL SEGMENTS HAVE BEEN COMPLETED AND ACCEPTED FOR MAINTENANCE, OR UNTIL SUCH TIME AS THEY ARE DEEMED AVAILABLE FOR SERVICE.

DISCLAIMER NOTE
 1) EXISTING UTILITY LOCATIONS SHOWN HEREON ARE APPROXIMATE ONLY. IT SHALL BE THE CONTRACTOR'S RESPONSIBILITY TO DETERMINE THE EXACT VERTICAL AND HORIZONTAL LOCATION OF ALL EXISTING UNDERGROUND UTILITIES PRIOR TO COMMENCING CONSTRUCTION. NO REPRESENTATION IS MADE THAT ALL EXISTING UTILITIES ARE SHOWN HEREON. THE ENGINEER ASSUMES NO RESPONSIBILITY FOR UTILITIES NOT SHOWN IN THEIR PROPER LOCATION.
 2) FOR ROADWAY WIDENING AND HALF STREET IMPROVEMENTS THE CONTRACTOR SHALL VERIFY CROSS SLOPES FROM EXISTING PAVEMENT SLOPES TO PROPOSED EDGE OF PAVEMENT OR PROTECTED LIP OF CURB PRIOR TO SUBGRADE PREPARATION AND CONSTRUCTION OF PROPOSED CURB LINE. IF MINIMUM OR MAXIMUM CROSS SLOPES DO NOT MEET AGENCY STANDARDS THE CONTRACTOR SHALL NOTIFY THE ENGINEER.

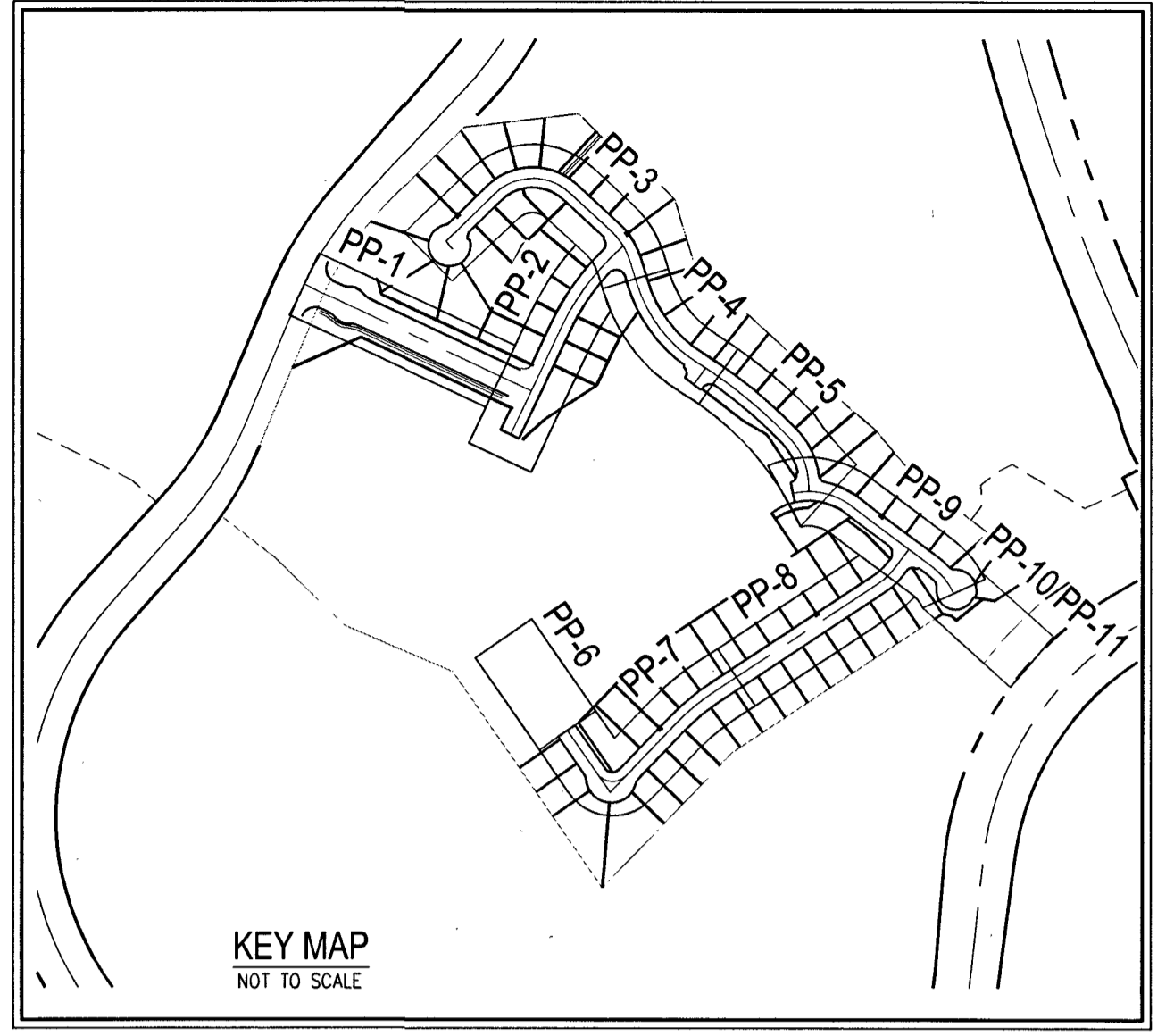
- WATER NOTES**
- 1) INSTALL 12" X 8" REDUCER PER UDACS PLATE NO. 30
 - 2) INSTALL 8" 11.25' BEND PER UDACS PLATE NO. 31
 - 3) INSTALL 8" 22.5' BEND PER UDACS PLATE NO. 31
 - 4) INSTALL 8" 45' BEND PER UDACS PLATE NO. 31
 - 5) INSTALL 8" 5' BEND PER UDACS PLATE NO. 31 (MECHANICALLY RESTRAINED)
 - 6) INSTALL 8" CAP WITH BLOWOFF PER UDACS PLATE NO. 36
 - 7) INSTALL 8" X 6" Tee PER UDACS PLATE NO. 31
 - 8) INSTALL 8" PVC WATER PIPE
 - 9) WITH 6" GATE VALVE PER UDACS PLATE NO. 40
 - 10) INSTALL 1" COPPER SERVICE W/ 3/4" METER PER UDACS PLATE NO. 1
 - 11) INSTALL 1" COPPER SERVICE W/ 1" IRRIGATION METER AND 1" RPPA PER UDACS PLATE NO. 4 & 8 AND CURB STOP DETAIL ON SHEET U-3
 - 12) INSTALL 8" GATE VALVE WITH VALVE BOX PER UDACS PLATE NO. 30 & 39
 - 13) INSTALL 8" X 6" REDUCER PER UDACS PLATE NO. 30
 - 14) INSTALL 6" PVC WATER PIPE
 - 15) INSTALL 6" 45' BEND PER UDACS PLATE NO. 31
 - 16) INSTALL 6" CAP WITH BLOWOFF PER UDACS PLATE NO. 36
 - 17) INSTALL 8" DIP WATER PIPE (CLASS 350)
 - 18) INSTALL FLUSHING VALVE ASSEMBLY PER DETAIL ON SHEET MU-1
 - 19) INSTALL 8" CAP WITH THRUST BLOCK PER UDACS PLATE NO. 31
 - 20) INSTALL BLOWOFF ASSEMBLY PER UDACS PLATE NO. 36

- SEWER NOTES**
- 1) INSTALL 48" SSMH PER DCSWCS SD-1A THRU SD-4 AND SD-9 (24" SINGLE LID)
 - 2) INSTALL 8" C-900 SS PER DCSWCS SD-1A THRU SD-4 AND SD-9
 - 3) INSTALL 8" PVC SS PER DCSWCS SD-15 AND SD-17
 - 4) MANHOLE SHALL BE CORROSION PROTECTED WITH FIELD APPLIED COATING PER DCSWCS SECTION 3.16.8
 - 5) INSTALL 4" SEWER LATERAL (PRIVATE) PER SD-22, SD-23, & SD-25 W/ 9" X 4" WYE (TYPICAL) (C-900 WHERE SHOWN ON PLANS)
 - 6) INSTALL 60" SSMH PER DCSWCS SD-1A THRU SD-4 AND SD-9 (24" SINGLE LID)
 - 7) INSTALL 8" CAP WITH THRUST BLOCK PER DCSWCS SECTION 2.2.5
 - 8) INSTALL SS CLEANOUT WITH TRAFFIC-RATED LID (PER DCSWCS SD-26) IN DRIVEWAY, BACK OF SIDEWALK
 - 9) INSTALL 72" SSMH PER DCSWCS SD-1A THRU SD-4 AND SD-9 (24" SINGLE LID)

DROP INLET NOTE
 WHERE 10 FEET PARALLEL SEPARATION IS NOT PRACTICABLE, CAST-IN-PLACE MONOLITHIC POUR WITH WATERSTOP BETWEEN SLAB AND WALLS, BASE, WALLS AND TOP TO BE CONSTRUCTED WITH WATERSTOPS, CENTER BULB, OR FLAT STRIP. (VINYLEX, GREENSTREAK PLASTIC PRODUCTS OR APPROVED EQUAL)

DEPTH OF COVER DURING CONSTRUCTION
 MAINTAIN MINIMUM TWENTY-FOUR (24) INCH COVER PER INSTALLATION. GRADING MUST BE COMPLETE PRIOR TO WATERLINE INSTALLATION.

APPROVED FOR CONSTRUCTION
Summi Dem
 LAS VEGAS VALLEY WATER DISTRICT ENGINEERING SERVICES
 PROJECT NO. 170849 FIRST APPROVED DATE: 7-13-18
 LWWD APPROVED FIRE FLOW 1750 GPM AT 20 PSI RESIDUAL



- GRADING NOTES**
- 1) CONSTRUCT 30" ROLL CURB AND GUTTER PER CCAUSD NO. 217.51. CURB FLOW LINES LESS THAN 0.00% GRADE SHALL BE WATER TESTED. ALL CURB LINES SHALL NOT FLOW SHALL BE REMOVED AND REPLACED AT NO COST TO THE CITY
 - 2) INSTALL "L" TYPE CURB AND GUTTER PER CCAUSD #216
 - 3) INSTALL 4" WIDE CONCRETE SIDEWALK (5" THICK OVER 6" TYPE II AGGREGATE BASE) PER CCAUSD #234
 - 4) INSTALL MODIFIED 8'-FT WIDE CROSS GUTTER PER DETAIL E ON SHEET D-1
 - 5) INSTALL 2" ASPHALT PAVEMENT OVER 4" TYPE II AGGREGATE BASE
 - 6) INSTALL 60" TYPE II SDMH PER CCAUSD #406
 - 7) CONSTRUCT 10' TRANSITION FROM "L" CURB TO ROLL CURB PER DETAIL A ON SHEET D-4
 - 8) INSTALL SIDEWALK DRAIN PER CCAUSD #236
 - 9) INSTALL "A" TYPE ISLAND CURB PER CCAUSD NO. 219
 - 10) INSTALL 5" WIDE CONCRETE SIDEWALK (5" THICK OVER 6" TYPE II AGGREGATE BASE) PER CCAUSD #234
 - 11) CONSTRUCT SIDEWALK RAMPS USING ARMOR TILE TRUNCATED DOMES OR EQUIVALENT PER CCAUSD NO. 235. CASE I
 - 12) LANDSCAPE TO BE DESIGNED AND MAINTAINED BY MASTER DEVELOPER HOA
 - 13) CONNECTION TO TRAIL DESIGN AND MAINTENANCE BY MASTER DEVELOPER HOA
 - 14) INSTALL WROUGHT IRON FENCE (AND PEDESTRIAN GATES WHERE SHOWN ON PLANS) PER SUMMERLIN DESIGN STANDARDS
 - 15) LANDSCAPE TO BE DESIGNED AND MAINTAINED BY MASTER DEVELOPER HOA
 - 16) INSTALL 4" THICK CONCRETE PAD OVER 6" THICK TYPE II AGGREGATE BASE
 - 17) INSTALL REMOVABLE BOLLARD PER DETAIL C ON SHEET D-1 AT 4-FT CENTER TO CENTER EACH WAY
 - 18) INSTALL 24" WIDE GATE PER CCAUSD DWG NO. 425.51
 - 19) INSTALL PAVERS AND CONCRETE BAND PER LANDSCAPE PLANS BY OTHERS
 - 20) INSTALL 18" CLASS III RCP STORM DRAIN
 - 21) INSTALL 24" CLASS III RCP STORM DRAIN
 - 22) INSTALL 36" CLASS III RCP STORM DRAIN
 - 23) INSTALL 60" TYPE I SDMH PER CCAUSD #403
 - 24) INSTALL TYPE "CM2" DROP INLET PER CCAUSD #412.1 AND #421 (SIZE PER PLANS)
 - 25) INSTALL TYPE II SDMH PER CCAUSD #405
 - 26) INSTALL 30" CLASS III RCP STORM DRAIN

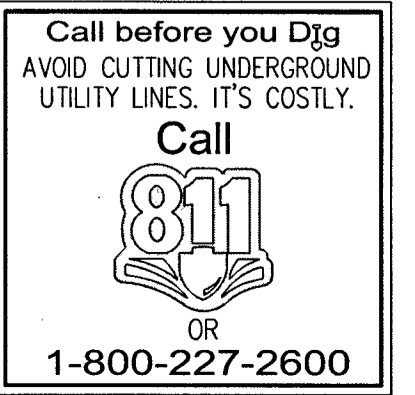
OWNER/DEVELOPER
 GREYSTONE NEVADA, LLC
 9275 WEST RUSSELL ROAD, SUITE #400
 LAS VEGAS, NV 89149
 PH: 702-840-2700
 FX: 702-840-2760

ENGINEER
 SLATER HANIFAN GROUP, INC.
 5740 S. ARVILLE STREET, SUITE 216
 LAS VEGAS, NV 89118
 PH: (702) 284-5300
 FX: (702) 284-5399
 CONTACT: JERRY SLATER

BENCHMARK
 USDA BRASS CAP ON AN IRON PIPE, 140' SOUTHWEST OF TELEPHONE POLE #26994T, SOUTHWEST CORNER OF THE U.S. 95/KYLE CANYON TURNOFF.
 ELEVATION = 2817.62 FEET, 858.813 METERS
 N.A.V.D. 88
 PER THE CLARK COUNTY VERTICAL CONTROL, LAST REVISED 2003

BASIS OF BEARINGS
 SOUTH 00°08'59" WEST, BEING THE BEARING OF THE EAST LINE OF THE SOUTHEAST QUARTER (SE 1/4) OF SECTION 12, TOWNSHIP 19 SOUTH, RANGE 59 EAST, M.D.M. CITY OF LAS VEGAS, CLARK COUNTY, NEVADA, AS SHOWN BY MAP THEREOF IN BOOK 147, PAGE 71 OF PLATS IN THE CLARK COUNTY RECORDER'S OFFICE, NEVADA.

PRIVATE STREETS NOTE
 ALL PRIVATE STREETS ARE P.U.E. PUBLIC SEWER EASEMENTS AND PUBLIC DRAINAGE EASEMENTS TO BE PRIVATELY MAINTAINED BY THE HOA



SLATER HANIFAN GROUP
 CONSULTING ENGINEERS & PLANNERS
 5740 S. ARVILLE STREET #216, LAS VEGAS, NV 89118
 PHONE (702) 284-5300 FAX (702) 284-5399

CITY OF LAS VEGAS, NEVADA

GREYSTONE NEVADA, LLC

SUMMERLIN VILLAGE 24 PARCEL D PHASE 1

PLAN AND PROFILE - XII

DATE: 7/13/18
 DRAFTER: DNP
 DESIGNER: BCC
 CHECKED: BCC
 PROJECT NO. CAL1701-000
 SHEET 30 OF 41
 L18-00808
 1075083-1

PROJ #726049 AGR #116715 QS 137-33-SE