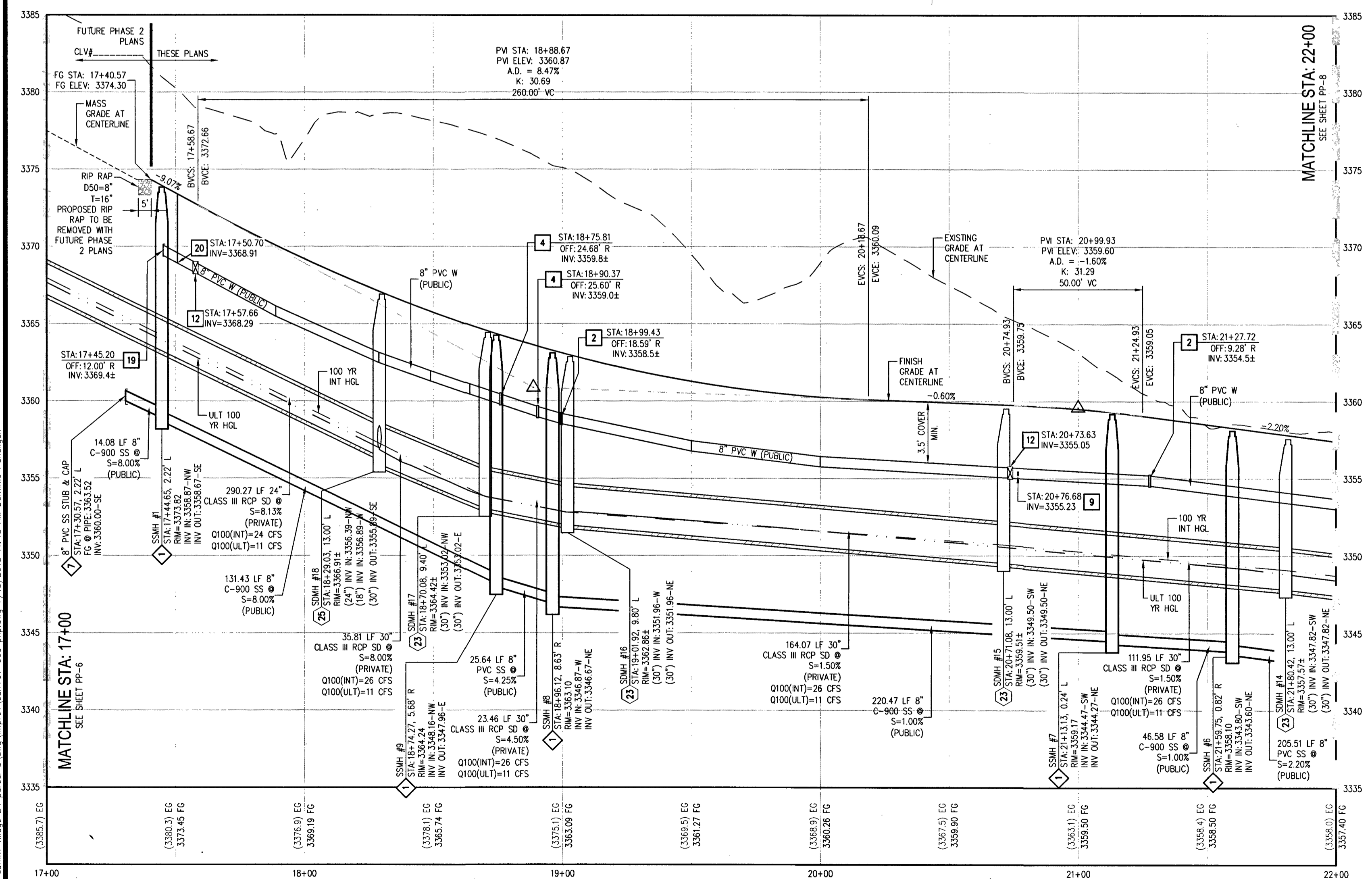
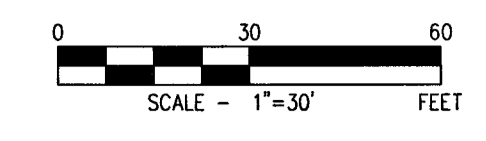


NOTCH TRAIL AVE - PLAN VIEW (PRIVATE) WATER PRESSURE ZONE WITHIN CURRENT SHEET: 3550



NOTCH TRAIL AVE - PROFILE VIEW HORIZ: 1" = 30' VERT: 1" = 5'



CALL SOUTHWEST GAS AT 702-651-2111 FOR STANDBY WHEN EXCAVATING OVER OR NEAR HIGH PRESSURE GAS LINES

SURVEY NOTE
OWNER RESPONSIBLE TO PROVIDE SURVEY MONUMENTATION AS SHOWN AND TO REPLACE ALL SURVEY MONUMENTATION DAMAGED, DISTURBED, DESTROYED, OR OBTUSCURED DURING CONSTRUCTION.

ELEVATION NOTE
ADD 3300 TO ALL SPOT GRADES WHERE THE HUNDREDS AND THOUSANDS PLACES ARE OMITTED FOR ACTUAL ELEVATION (I.E. 01.00 REPRESENTS 3301.00)

SEWER CONNECTION NOTE
ONE OR MORE SEGMENTS OF THE DOWNSTREAM SEWER SYSTEM THAT WILL SERVE THIS PROJECT HAS NOT BEEN COMPLETED AND/OR ACCEPTED FOR MAINTENANCE BY THE CITY OF LAS VEGAS. ANY WORK DONE ON THIS PROJECT PRIOR TO THE COMPLETION AND/OR ACCEPTANCE OF THE DOWNSTREAM SEWER SYSTEM(S) SHALL BE DONE AT THE DEVELOPER'S OWN RISK. THE CITY OF LAS VEGAS RESERVES THE RIGHT TO PREVENT THE PHYSICAL CONNECTION OF THIS PROJECT INTO THE DOWNSTREAM SEWER SYSTEM UNTIL ALL SEGMENTS HAVE BEEN COMPLETED AND ACCEPTED FOR MAINTENANCE. OR UNTIL SUCH TIME AS THEY ARE DEEMED AVAILABLE FOR SERVICE.

DISCLAIMER NOTE
1) EXISTING UTILITY LOCATIONS SHOWN HEREON ARE APPROXIMATE ONLY. IT SHALL BE THE CONTRACTOR'S RESPONSIBILITY TO DETERMINE THE EXACT VERTICAL AND HORIZONTAL LOCATION OF ALL EXISTING UNDERGROUND UTILITIES PRIOR TO COMMENCING CONSTRUCTION. NO REPRESENTATION IS MADE THAT ALL EXISTING UTILITIES ARE SHOWN HEREON. THE ENGINEER ASSUMES NO RESPONSIBILITY FOR UTILITIES NOT SHOWN IN THEIR PROPER LOCATION.
2) FOR ROADWAY WIDENING AND HALF STREET IMPROVEMENTS THE CONTRACTOR SHALL VERIFY CROSS SLOPES FROM EXISTING PAVEMENT SAWCUT LINE TO PROPOSED EDGE OF PAVEMENT OR PROJECTED LIP OF CURB PRIOR TO SUBGRADE PREPARATION AND CONSTRUCTION OF PROPOSED CURB LINE. IF MINIMUM OR MAXIMUM CROSS SLOPES DO NOT MEET AGENCY STANDARDS THE CONTRACTOR SHALL NOTIFY THE ENGINEER.

DEPTH OF COVER DURING CONSTRUCTION
MAINTAIN MINIMUM TWENTY-FOUR (24) INCH COVER PER UDACS SECTION 2.08.04. GRADING MUST BE COMPLETE PRIOR TO WATERLINE INSTALLATION.

NOTE
SSMH # 3-7, 10, 11, 13-15, SHALL HAVE WATER-TIGHT JOINT SEALANTS PER DCSWS 4.9.7

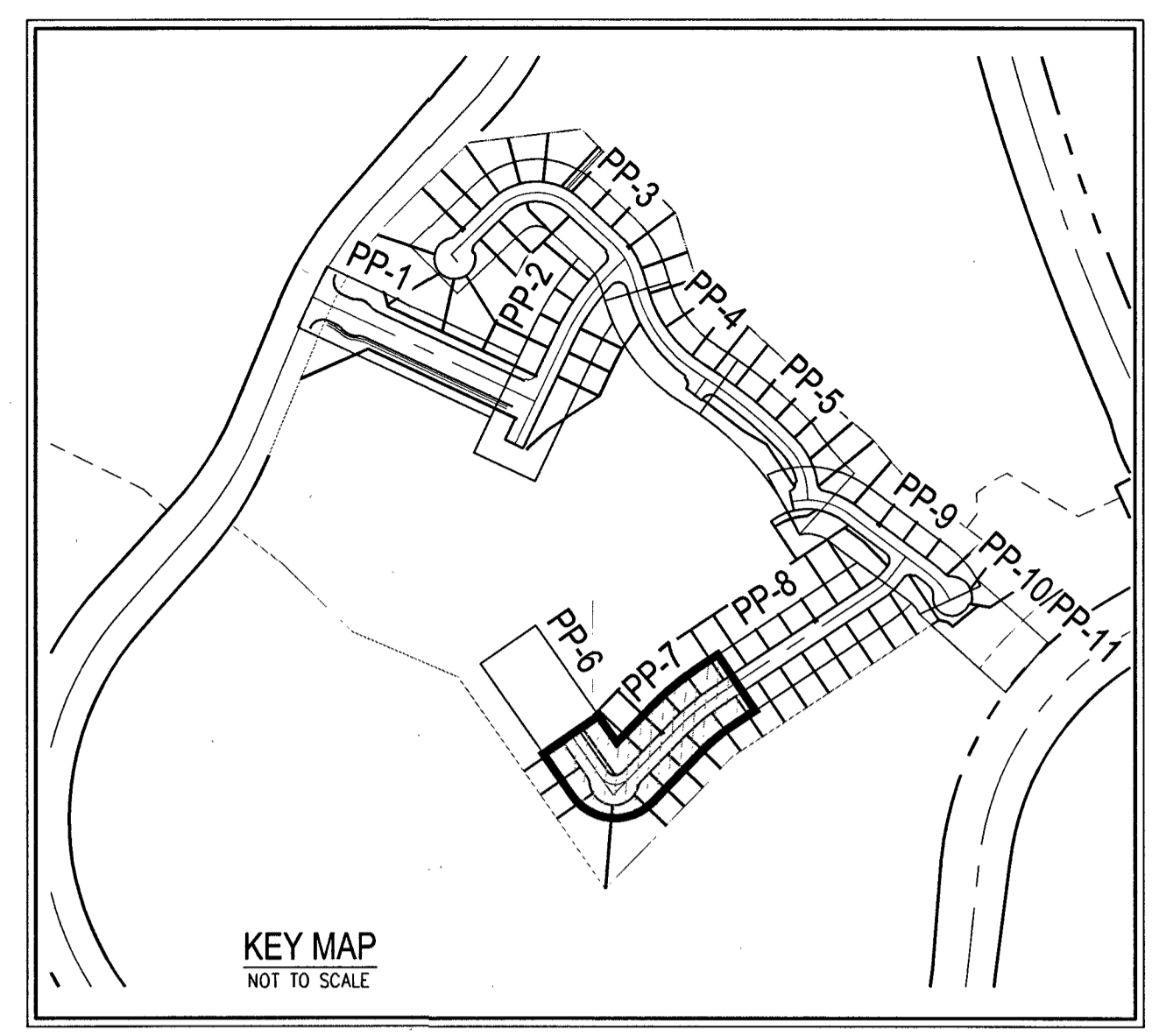
- WATER NOTES**
- 1) INSTALL 12" X 8" REDUCER PER UDACS PLATE NO. 30
 - 2) INSTALL 8" 11.25' BEND PER UDACS PLATE NO. 31
 - 3) INSTALL 8" 22.5' BEND PER UDACS PLATE NO. 31
 - 4) INSTALL 8" 45' BEND PER UDACS PLATE NO. 31
 - 5) INSTALL 8" 5' BEND PER UDACS PLATE NO. 31 (MECHANICALLY RESTRAINED)
 - 6) INSTALL 8" CAP WITH BLOWOFF PER UDACS PLATE NO. 36
 - 7) INSTALL 8" X 8" TEE PER UDACS PLATE NO. 31
 - 8) INSTALL 8" PVC WATER PIPE
 - 9) INSTALL 8" X 6" TEE PER UDACS PLATE NO. 31 AND FIRE HYDRANT ASSEMBLY
 - 10) INSTALL 1" COPPER SERVICE W/ 3/4" METER PER UDACS PLATE NO. 1
 - 11) INSTALL 1" COPPER SERVICE W/ 1" IRRIGATION METER AND 1" RPPA PER UDACS PLATE NO. 4 & 8 AND CURB STOP DETAIL ON SHEET U-3
 - 12) INSTALL 8" GATE VALVE WITH VALVE BOX PER UDACS PLATE NO. 30 & 39
 - 13) INSTALL 8" X 6" REDUCER PER UDACS PLATE NO. 30
 - 14) INSTALL 6" PVC WATER PIPE
 - 15) INSTALL 6" 45' BEND PER UDACS PLATE NO. 31
 - 16) INSTALL 6" CAP WITH BLOWOFF PER UDACS PLATE NO. 36
 - 17) INSTALL 8" DIP WATER PIPE (CLASS 350)
 - 18) INSTALL FLUSHING VALVE ASSEMBLY PER DETAIL ON SHEET MU-1
 - 19) INSTALL 8" CAP WITH THRUST BLOCK PER UDACS PLATE NO. 31
 - 20) INSTALL BLOWOFF ASSEMBLY PER UDACS PLATE NO. 36

- SEWER NOTES**
- 1) INSTALL 48" SSMH PER DCSWS SD-1A THRU SD-4 AND SD-9 (24" SINGLE LID)
 - 2) INSTALL 8" C-900 SS PER DCSWS SD-1A THRU SD-4 AND SD-9
 - 3) INSTALL 8" PVC SS PER DCSWS SD-15 AND SD-17
 - 4) MANHOLE SHALL BE CORROSION PROTECTED WITH FIELD APPLIED COATING PER DCSWS SECTION 3.16.8
 - 5) INSTALL 4" SEWER LATERAL (PRIVATE) PER SD-22, SD-23, & SD-25 W/ 4" X 4" W/ 4" W/ 4" (TYPICAL) (C-900 WHERE SHOWN ON PLANS)
 - 6) INSTALL 60" SSMH PER DCSWS SD-1A THRU SD-4 AND SD-9 (24" SINGLE LID)
 - 7) INSTALL 8" CAP WITH THRUST BLOCK PER DCSWS SECTION 2.2.5
 - 8) INSTALL SS CLEANOUT WITH TRAFFIC-RATED LID (PER DCSWS SD-26) IN DRIVEWAY, BACK OF SIDEWALK
 - 9) INSTALL 72" SSMH PER DCSWS SD-1A THRU SD-4 AND SD-9 (24" SINGLE LID)

LEGEND
5 SEE SDD #8 LATERAL NEW PROFILE ON SHEET PP-12

DROP INLET NOTE
WHERE 10 FEET PARALLEL SEPARATION IS NOT PRACTICABLE, C-900 IN-PLACE MONOLITHIC POLYMER WITH WATERSTOP BETWEEN SLAB AND WALLS. BASE, WALLS AND TOP TO BE CONSTRUCTED WITH WATERSTOPS, CENTER BULL, OR FLAT STRIP (W/INTEX GREENSTREAK PLASTIC PRODUCTS OR APPROVED EQUAL).

APPROVED FOR CONSTRUCTION
John Deon
LAS VEGAS VALLEY WATER DISTRICT ENGINEERING SERVICES
PROJECT NO. 126049, FIRST APPROVED DATE: 1-13-18
LVWD APPROVED FIRE FLOW 1500 GPM AT 20 PSI RESIDUAL



- GRADING NOTES**
- 1) CONSTRUCT 30" ROLL CURB AND GUTTER PER CCAUSD NO. 217.S1. CURB FLOW LINES LESS THAN 0.00% GRADE SHALL BE WATER TESTED. ANY CURB THAT DOES NOT FLOW SHALL BE REMOVED AND REPLACED AT NO COST TO THE CITY
 - 2) INSTALL 1" TYPE CURB AND GUTTER PER CCAUSD #216
 - 3) INSTALL 4" WIDE CONCRETE SIDEWALK (5" THICK OVER 6" TYPE II AGGREGATE BASE) PER CCAUSD #234
 - 4) INSTALL MODIFIED 8-FT WIDE CROSS GUTTER PER DETAIL E ON SHEET D-1
 - 5) INSTALL 2" ASPHALT PAVEMENT OVER 4" TYPE II AGGREGATE BASE
 - 6) INSTALL 60" TYPE III SSMH PER CCAUSD #406
 - 7) CONSTRUCT 10' TRANSITION FROM 1" CURB TO RCP CURB PER DETAIL A ON SHEET D-4
 - 8) INSTALL SIDEWALK DRAIN PER CCAUSD #236
 - 9) INSTALL 4" TYPE ISLAND CURB PER CCAUSD NO. 219
 - 10) INSTALL 5" WIDE CONCRETE SIDEWALK (5" THICK OVER 6" TYPE II AGGREGATE BASE) PER CCAUSD #234
 - 11) CONSTRUCT SIDEWALK RAMP USING ARMOR TILE TRUNCATED DOMES OR EQUIVALENT PER CCAUSD NO. 235, CASE 1
 - 12) LANDSCAPE TO BE DESIGNED AND MAINTAINED BY MASTER DEVELOPER HOA
 - 13) CONNECTION TO TRAIL DESIGN AND MAINTENANCE BY MASTER DEVELOPER HOA
 - 14) INSTALL WROUGHT IRON FENCE (AND PEDESTRIAN GATES WHERE SHOWN ON PLANS) PER SUMMERLIN DESIGN STANDARDS
 - 15) INSTALL 4.5" THICK CRUSHED ROCK
 - 16) INSTALL 4" THICK CONCRETE PAD OVER 6" THICK TYPE II AGGREGATE BASE
 - 17) INSTALL REMOVABLE BOLLARD PER DETAIL C ON SHEET D-1 AT 4-FT CENTER TO CENTER EACH WAY
 - 18) INSTALL 24" WIDE GATE PER CCAUSD DWG NO. 425.S1
 - 19) INSTALL PAVERS AND CONCRETE BAND PER LANDSCAPE PLANS BY OTHERS
 - 20) INSTALL 18" CLASS III RCP STORM DRAIN
 - 21) INSTALL 24" CLASS III RCP STORM DRAIN
 - 22) INSTALL 36" CLASS III RCP STORM DRAIN
 - 23) INSTALL 60" TYPE I SSMH PER CCAUSD #403
 - 24) INSTALL TYPE "CM2" DROP INLET PER CCAUSD #412.1 AND #421 (SIZE PER PLANS)
 - 25) INSTALL TYPE II SSMH PER CCAUSD #405
 - 26) INSTALL 30" CLASS III RCP STORM DRAIN

OWNER/DEVELOPER
RYLAND HOMES NEVADA, LLC
9275 WEST RUSSELL ROAD, SUITE #400
LAS VEGAS, NV 89148
PH: 702-840-2700
FX: 702-840-2760

ENGINEER
SLATER HANIFAN GROUP, INC.
5740 S. ARVILLE STREET, SUITE 216
LAS VEGAS, NV 89118
PH: (702) 284-5300
FX: (702) 284-5399
CONTACT: JERRY SLATER

BENCHMARK
USDA BRASS CAP ON AN IRON PIPE, 140' SOUTHWEST OF TELEPHONE POLE #26994T, SOUTHWEST CORNER OF THE U.S. 95/KYLE CANYON TURNOFF.
ELEVATION = 2817.62 FEET, 858.813 METERS
N.A.V.D. 88
PER THE CLARK COUNTY VERTICAL CONTROL LAST REVISED 2003

BASIS OF BEARINGS
SOUTH 00°08'59" WEST, BEING THE BEARING OF THE EAST LINE OF THE SOUTHEAST QUARTER (SE1/4) OF SECTION 12, TOWNSHIP 19 SOUTH, RANGE 59 EAST, M.D.M., CITY OF LAS VEGAS, CLARK COUNTY, NEVADA, AS SHOWN BY MAP THEREOF IN BOOK 147, PAGE 71 OF PLATS IN THE CLARK COUNTY RECORDER'S OFFICE, NEVADA.

PRIVATE STREETS NOTE
ALL PRIVATE STREETS ARE P.U.E., PUBLIC SEWER EASEMENTS AND PUBLIC DRAINAGE EASEMENTS TO BE PRIVATELY MAINTAINED BY THE HOA

FAST
Call before you UnderGround
1-702-432-5300
FREEMAN & ARTERIAL SYSTEM OF TRANSPORTATION (F.A.S.T.)

AVOID HITTING OVERHEAD POWER LINES. IT'S COSTLY.
CALL BEFORE YOU GO OVERHEAD
1-702-227-2929

Call before you Dig
AVOID CUTTING UNDERGROUND UTILITY LINES. IT'S COSTLY.
Call 811
OR
1-800-227-2600

SLATER HANIFAN GROUP
CONSULTING ENGINEERS & PLANNERS
5740 S. ARVILLE STREET #216, LAS VEGAS, NV 89118
PHONE (702) 284-5300 FAX (702) 284-5399

GREYSTONE NEVADA, LLC
SUMMERLIN VILLAGE 24 PARCEL D PHASE 1
PLAN AND PROFILE - VII

CITY OF LAS VEGAS, NEVADA

DATE: 7/13/18
DRAFTER: DNP
DESIGNER: BCC
CHECKED: BCC
PROJECT NO. CAL1701-000
PROF. ENGINEER - STATE OF NEVADA
JERRY SLATER
No. 14167
1-13-18
PP-7
SHEET 25 OF 41
118-00808
1075083-1

PROJ #126049 AGR #116715 QS 137-335E