

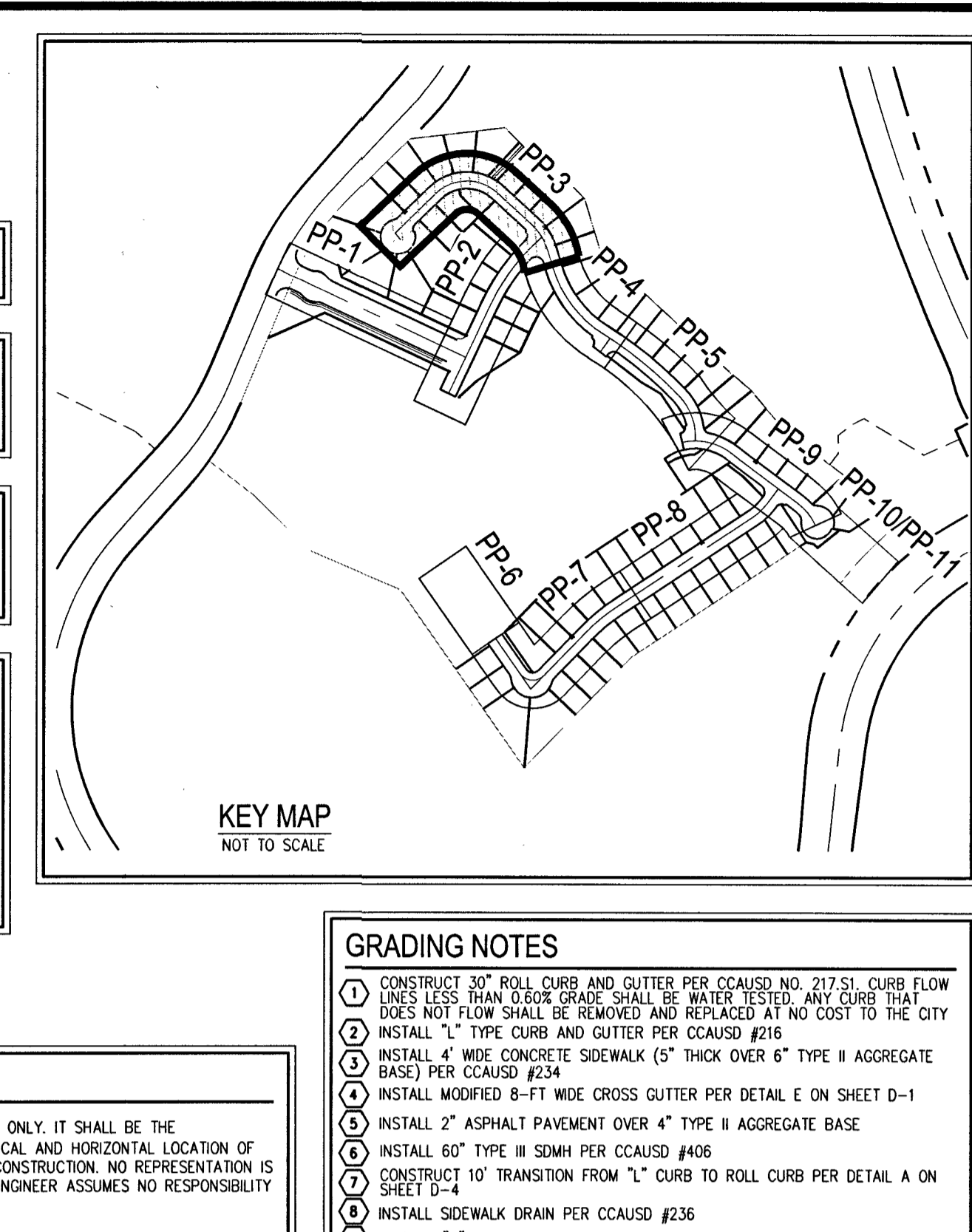
SCALE - 1"=30' FEET

SURVEY NOTE
OWNER RESPONSIBLE TO PROVIDE SURVEY MONUMENTATION AS SHOWN AND TO REPLACE ALL SURVEY MONUMENTATION DAMAGED, DISTURBED, DESTROYED, OR OBLISCURED DURING CONSTRUCTION.

ELEVATION NOTE
ADD 3300 TO ALL SPOT GRADES WHERE THE HUNDREDS AND THOUSANDS PLACES ARE OMITTED FOR ACTUAL ELEVATION (I.E. 01.00 REPRESENTS 3301.00)

SEWER CONNECTION NOTE
ONE OR MORE SEGMENTS OF THE DOWNSTREAM SEWER SYSTEM THAT WILL SERVE THIS PROJECT HAS NOT BEEN COMPLETED AND/OR ACCEPTED FOR MAINTENANCE BY THE CITY OF LAS VEGAS. ANY WORK DONE ON THIS PROJECT PRIOR TO THE COMPLETION AND/OR ACCEPTANCE OF THE DOWNSTREAM SEWER SYSTEM(S) SHALL BE DONE AT THE DEVELOPER'S OWN RISK. THE CITY OF LAS VEGAS RESERVES THE RIGHT TO PREVENT THE PHYSICAL CONNECTION OF THIS PROJECT INTO THE DOWNSTREAM SEWER SYSTEM UNTIL ALL SEGMENTS HAVE BEEN COMPLETED AND ACCEPTED FOR MAINTENANCE, OR UNTIL SUCH TIME AS THEY ARE DEEMED AVAILABLE FOR SERVICE.

DISCLAIMER NOTE
1) EXISTING UTILITY LOCATIONS SHOWN HEREON ARE APPROXIMATE ONLY. IT SHALL BE THE CONTRACTOR'S RESPONSIBILITY TO DETERMINE THE EXACT VERTICAL AND HORIZONTAL LOCATION OF ALL EXISTING UNDERGROUND UTILITIES PRIOR TO COMMENCING CONSTRUCTION. NO REPRESENTATION IS MADE THAT ALL EXISTING UTILITIES ARE SHOWN HEREON. THE ENGINEER ASSUMES NO RESPONSIBILITY FOR UTILITIES NOT SHOWN IN THEIR PROPER LOCATION.
2) FOR ROADWAY WIDENING AND HALF STREET IMPROVEMENTS THE CONTRACTOR SHALL VERIFY CROSS SLOPES FROM EXISTING PAVEMENT SANDOUT LINE TO PROPOSED EDGE OF PAVEMENT OR PROJECTED LIP OF CURB PRIOR TO SURFACE PREPARATION AND CONSTRUCTION OF PROPOSED CURB LINE. IF MINIMUM OR MAXIMUM CROSS SLOPES DO NOT MEET AGENCY STANDARDS THE CONTRACTOR SHALL NOTIFY THE ENGINEER.

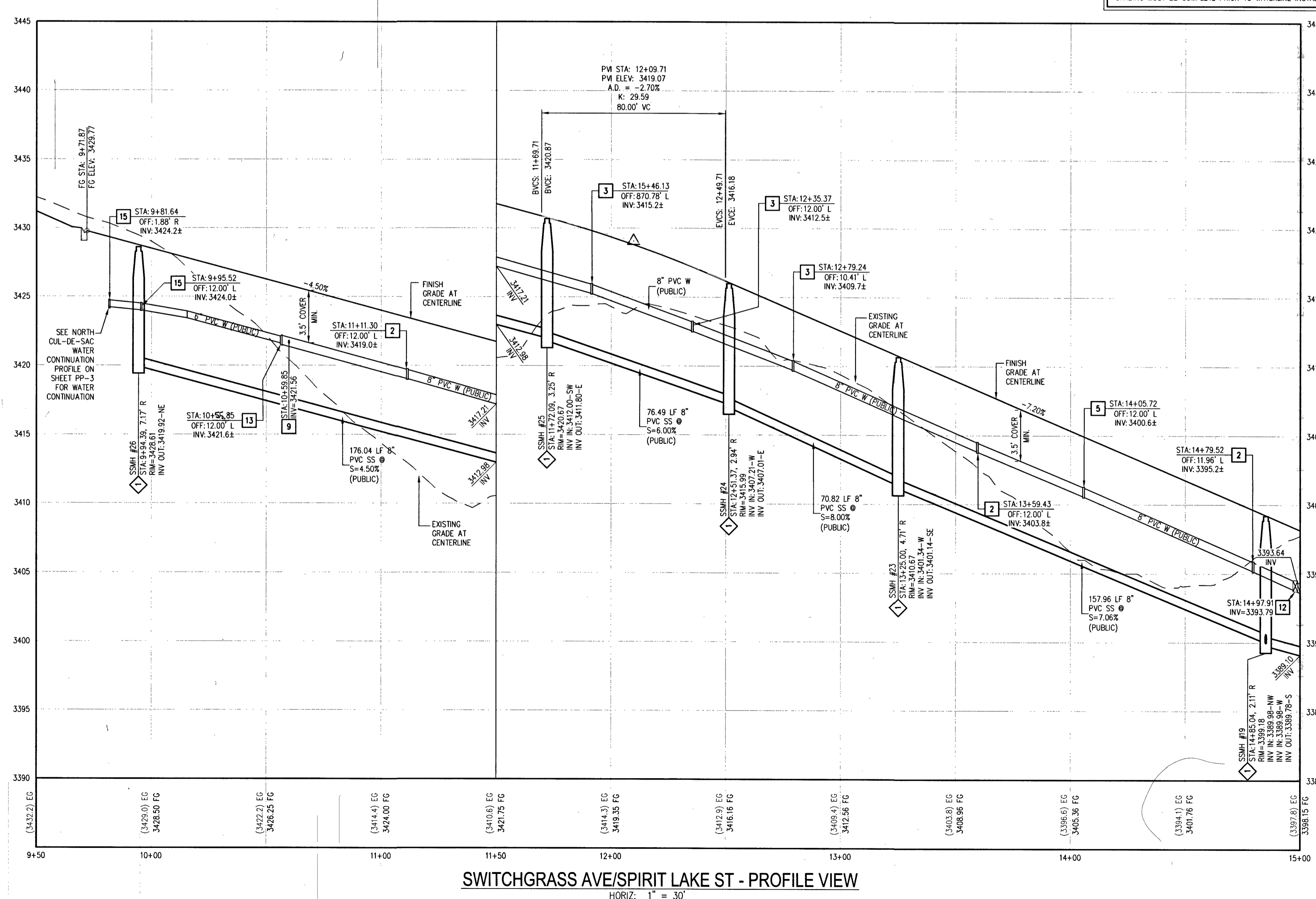


WATER PRESSURE ZONE
WITHIN CURRENT SHEET: 3550

SWITCHGRASS AVE/SPIRIT LAKE ST - PLAN VIEW
(PRIVATE)

GREY DUNES AVE
SEE SHEET PP-2

DEPTH OF COVER DURING CONSTRUCTION
MAINTAIN MINIMUM TWENTY-FOUR (24) INCH COVER PER UDACS SECTION 2.08.04. GRADING MUST BE COMPLETE PRIOR TO WATERLINE INSTALLATION.



WATER NOTES

- INSTALL 12" x 8" REDUCER PER UDACS PLATE NO. 30
- INSTALL 8" 11.25" BEND PER UDACS PLATE NO. 31
- INSTALL 8" 22.5" BEND PER UDACS PLATE NO. 31
- INSTALL 8" 45" BEND PER UDACS PLATE NO. 31
- INSTALL 8" 5" BEND PER UDACS PLATE NO. 31 (MECHANICALLY RESTRAINED)
- INSTALL 8" CAP WITH BLOWOFF PER UDACS PLATE NO. 36
- INSTALL 8" x 8" TEE PER UDACS PLATE NO. 31
- INSTALL 8" PVC WATER PIPE
- INSTALL 8" x 6" TEE PER UDACS PLATE NO. 31 AND FIRE HYDRANT ASSEMBLY WITH 6" GATE VALVE PER UDACS PLATE NO. 40
- INSTALL 1" COPPER SERVICE W/ 3/4" METER PER UDACS PLATE NO. 1
- INSTALL 1" COPPER SERVICE W/ 1" IRRIGATION METER AND 1" RPPA PER UDACS PLATE NO. 4 & 8 AND CURB STOP DETAIL ON SHEET U-3
- INSTALL 8" GATE VALVE WITH VALVE BOX PER UDACS PLATE NO. 30 & 39
- INSTALL 8" x 6" REDUCER PER UDACS PLATE NO. 30
- INSTALL 6" PVC WATER PIPE
- INSTALL 6" 45" BEND PER UDACS PLATE NO. 31
- INSTALL 6" CAP WITH BLOWOFF PER UDACS PLATE NO. 36
- INSTALL 8" DIP WATER PIPE (CLASS 350)
- INSTALL FLUSHING VALVE ASSEMBLY PER DETAIL ON SHEET MU-1
- INSTALL 8" CAP WITH THRUST BLOCK PER UDACS PLATE NO. 31
- INSTALL BLOWOFF ASSEMBLY PER UDACS PLATE NO. 36

SEWER NOTES

- INSTALL 48" SSMH PER DCSWCS SD-1A THRU SD-4 AND SD-9 (24" SINGLE LD)
- INSTALL 8" C-900 SS PER DCSWCS SD-1A THRU SD-4 AND SD-9
- INSTALL 8" PVC SS PER DCSWCS SD-15 AND SD-17
- MANHOLE SHALL BE CORROSION PROTECTED WITH FIELD APPLIED COATING PER DCSWCS SECTION 3.16.8
- INSTALL 4" SEWER LATERAL (PRIVATE) PER SD-22, SD-23, & SD-25 W/ 8" x 4" WYE (TYPICAL) (C-900 WHERE SHOWN ON PLANS)
- INSTALL 60" SSMH PER DCSWCS SD-1A THRU SD-4 AND SD-9 (24" SINGLE LD)
- INSTALL 8" CAP WITH THRUST BLOCK PER DCSWCS SECTION 2.2.5
- INSTALL SS CLEANOUT WITH TRAFFIC-RATED LID (PER DCSWCS SD-20) IN DRIVEWAY, BACK OF SIDEWALK
- INSTALL 72" SSMH PER DCSWCS SD-1A THRU SD-4 AND SD-9 (24" SINGLE LD)

OWNER/DEVELOPER
RYLAND HOMES NEVADA, LLC
9275 WEST RUSSELL ROAD, SUITE #400
LAS VEGAS, NV 89148
PH: 702-840-2700
FX: 702-840-2760

ENGINEER
SLATER HANIFAN GROUP, INC.
5740 S. ARVILLE STREET, SUITE 216
LAS VEGAS, NV 89118
PH: (702) 284-5300
FX: (702) 284-5399
CONTACT: JERRY SLATER

BENCHMARK
USDA BRASS CAP ON AN IRON PIPE, 140' SOUTHWEST OF TELEPHONE POLE #269941, SOUTHWEST CORNER OF THE U.S. 95/KYLE CANYON TURNOFF.
ELEVATION = 2817.62 FEET, 858.813 METERS
N.A.V.D. 88
PER THE CLARK COUNTY VERTICAL CONTROL LAST REVISED 2003

BASIS OF BEARINGS
SOUTH 070°59' WEST, BEING THE BEARING OF THE EAST LINE OF THE SOUTHWEST QUARTER (SE 1/4) OF SECTION 12, TOWNSHIP 19 SOUTH, RANGE 59 EAST, WDM, CITY OF LAS VEGAS, CLARK COUNTY, NEVADA, AS SHOWN BY MAP THEREOF IN BOOK 147, PAGE 71 OF PLATS IN THE CLARK COUNTY RECORDER'S OFFICE, NEVADA.

PRIVATE STREETS NOTE
ALL PRIVATE STREETS ARE P.U.E. PUBLIC SEWER EASEMENTS AND PUBLIC DRAINAGE EASEMENTS TO BE PRIVATELY MAINTAINED BY THE HOA

APPROVED FOR CONSTRUCTION
James Dean
LAS VEGAS VALLEY WATER DISTRICT ENGINEERING SERVICES
PROJECT NO. 128049 - FIRST APPROVED DATE: 1-21-18
LVWD APPROVED FIRE FLOW: 3000 GPM AT 20 PSI RESIDUAL

SWITCHGRASS AVE/SPIRIT LAKE ST - PROFILE VIEW
HORIZ: 1" = 30'
VERT: 1" = 5'

FAST
Call before you UnderGround
1-702-432-5300
FREEWAY & ARTERIAL SYSTEM OF TRANSPORTATION (F.A.S.T.)

AVOID HITTING OVERHEAD POWER LINES. IT'S COSTLY.
CALL BEFORE YOU GO OVERHEAD
1-702-227-2929

Call before you Dig
AVOID CUTTING UNDERGROUND UTILITY LINES. IT'S COSTLY.
Call 811
OR
1-800-227-2600

SLATER HANIFAN GROUP
CONSULTING ENGINEERS & PLANNERS
5740 S. ARVILLE STREET #216, LAS VEGAS, NV 89118
PHONE (702) 284-5300 FAX (702) 284-5399

GREYSTONE NEVADA, LLC
SUMMERLIN VILLAGE 24 PARCEL D PHASE 1
PLAN AND PROFILE - III

PROJ #128049 AGR #118715 OS 137-33-3E

PP-3
SHEET 21 OF 41
L18-00808
107Y5083-1

DATE	BY	APP	DESCRIPTION
7/13/18	DNP	BCC	DRAFTER: DNP
		BCC	DESIGNER: BCC
		BCC	CHECKED: BCC
			PROJECT NO. CAL1701-000

DATE: 7/13/18
DRAFTER: DNP
DESIGNER: BCC
CHECKED: BCC
PROJECT NO. CAL1701-000

PROFESSIONAL ENGINEER - STATE OF NEVADA
JERRY SLATER
No. 14167
1-7-17