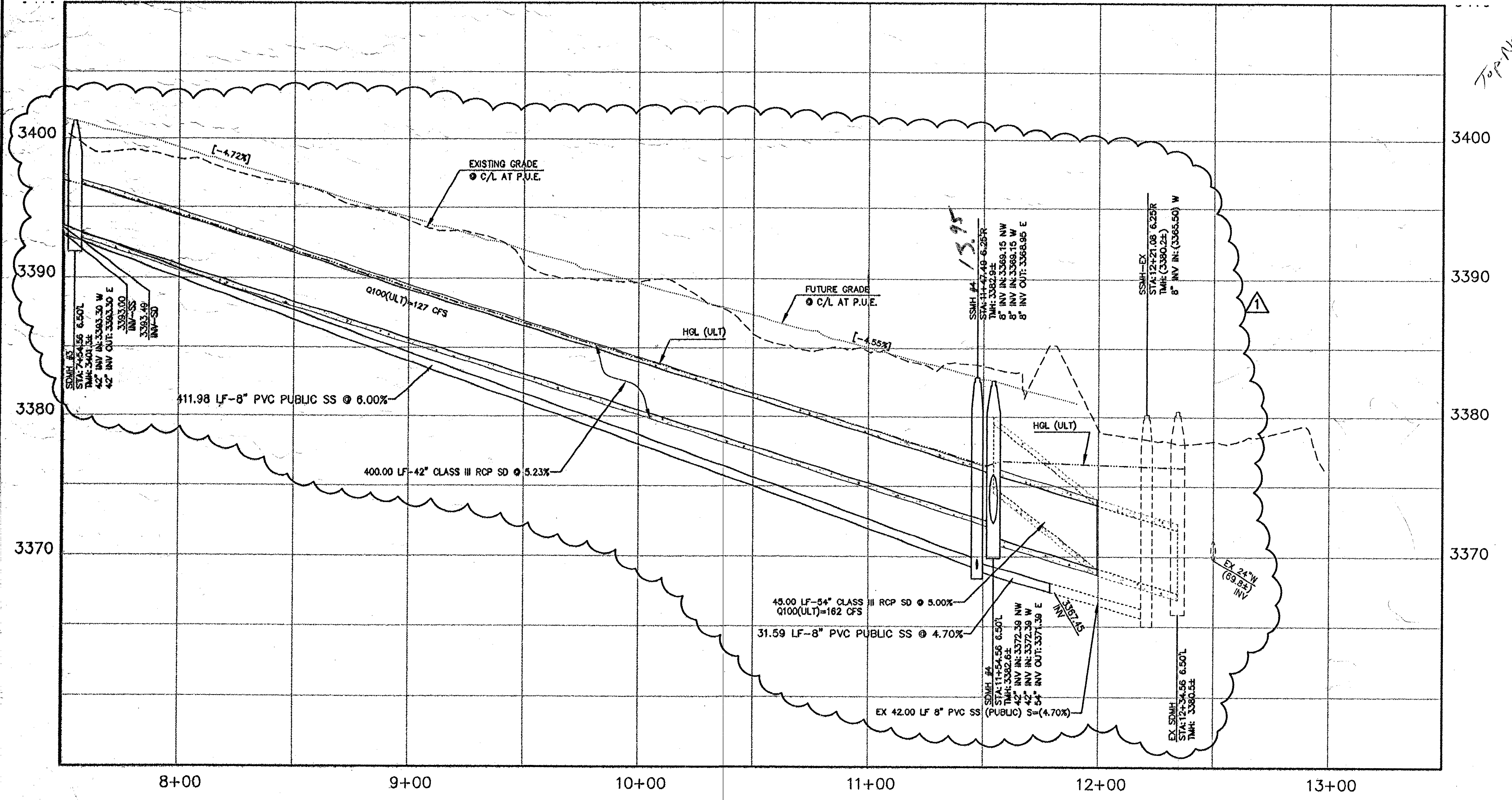


STORM DRAIN AND SEWER OUTFALL

SCALE: HORIZ. 1" = 30' VERT. 1" = 5'



- #### CONSTRUCTION NOTES
- SEWER**
- 1. INSTALL 48" DIA. SEWER MANHOLE WITH BOLT DOWN COVER (SD 1A DCS)
 - 2. INSTALL 8" PVC SANITARY SEWER PIPE (SD-18 DCS)
 - 3. INSTALL TEMPORARY PLUG AND CAP.
 - 4. REMOVE EX. PLUG & CONNECT TO EX. SEWER LINE (CONTRACTOR TO VERIFY SIZE, INVERT, AND LOCATION OF EXISTING SEWER LINE) PRIOR TO CONSTRUCTION
- STORM DRAIN**
- 1. INSTALL TYPE II STORM DRAIN MANHOLE (408 USB)
 - 2. INSTALL 42" CLASS III RCP STORM DRAIN PIPE.
 - 3. INSTALL 54" CLASS III RCP STORM DRAIN PIPE.
 - 4. CONNECT TO EXISTING STORM DRAIN LINE (CONTRACTOR TO VERIFY SIZE, INVERT, AND LOCATION OF EXISTING STORM DRAIN LINE)
 - 5. REMOVE EXISTING 54" RCP STORM DRAIN PIPE.
 - 6. INSTALL TYPE III STORM DRAIN MANHOLE (408 USB)
 - 7. INSTALL 48" CLASS III RCP STORM DRAIN PIPE.
 - 8. REMOVE EXISTING RIP-RAP, FILL AND COMPACT TO DESIGNED GRADE.
 - 9. INSTALL RIP-RAP, D50=12", T=24".
 - 10. INSTALL CONCRETE COLLAR PER DETAIL "A" ON SHEET 4.

CONTRACTOR NOTE

ALL EXISTING UTILITY LOCATIONS SHOWN HEREON ARE APPROXIMATE ONLY. IT SHALL BE THE CONTRACTOR'S RESPONSIBILITY TO DETERMINE THE EXACT VERTICAL AND HORIZONTAL LOCATION OF ALL EXISTING UNDERGROUND UTILITIES PRIOR TO CONSTRUCTION AND RELOCATE THESE UTILITIES AS NECESSARY. NO REPRESENTATION IS MADE THAT ALL UTILITIES ARE SHOWN HEREON. THE ENGINEER ASSUMES NO LIABILITY FOR UTILITIES NOT SHOWN OR UTILITIES NOT SHOWN IN THEIR PROPER LOCATIONS.

BENCHMARK

DESC.	NAVD 88 DATUM	NAVD 88 DATUM
RIVET AND PLATE IN TOP OF CURB @ NORTHEAST CORNER OF DESERT FOOTHILLS AND ALTA DRIVE	3304.45 (FEET)	1007.197 (METERS)
CLV BM No. 5LV09 34NE8		

BASIS OF BEARINGS

NORTH 89°45'05" EAST BEING THE SOUTH LINE OF THE SOUTHWEST QUARTER (SW 1/4) OF SECTION 35, TOWNSHIP 20 SOUTH, RANGE 59 EAST, M.D.M., AS SHOWN BY MAP ON FILE IN FILE 91, PAGE 28 OF PARCEL MAPS IN THE CLARK COUNTY RECORDER'S OFFICE, CLARK COUNTY, NEVADA

APPROVED FOR CONSTRUCTION

 LAS VEGAS VALLEY WATER DISTRICT ENGINEERING SERVICES MANAGER
 PROJECT NO. 122199 DATE: 02/10/14

Call before you Dig
 Avoid hitting underground utility lines. It's easy.
Call 811
 OR
 1-800-227-2800

AVOID HITTING OVERHEAD POWER LINES. IT'S EASY.
CALL BEFORE YOU DIG OVERHEAD
 1-702-227-2929

FAST
 Call before you UnderGround.
 1-702-432-5300
SYSTEM OF RECORDATION

NOTE

THIS SET OF DRAWINGS IS BASED UPON NAVD 88 DATUM. PREVIOUS DRAWINGS MAY BE BASED ON OTHER DATUM. CARE SHOULD BE OBSERVED WHEN UTILIZING THIS SET OF DRAWINGS.

DATE: 02/10/14
 PROJECT NO. 62023B-215
 DESIGN: JN
 DRAWN: JN
 CHECK: BY
 PLOT DATE: 01-30-14
 PLOT TIME: 09:43:33
 REVISIONS: 12/29/13 REVISE SD AND SS DESIGN

G. C. WALLACE COMPANIES
 ENGINEERS, PLANNERS | SURVEYORS
 15555 ANTELOPE RIDGE DRIVE, SUITE 100, LAS VEGAS, NV 89134
 P: 702.894.2599 F: 702.894.2599 WWW.GCWALLACE.COM

SUMMERLIN
 VILLAGE 288 PARCEL R-8
 STORM DRAIN AND SANITARY SEWER OUTFALL IMPROVEMENTS
 UTILITY PLAN AND PROFILE
 FROM STA 7+50 TO STA 11+50

DRAWING
P2
 7 OF 8 SHEETS