

**ANTELOPE RIDGE DRIVE**  
SCALE: HORIZ. 1" = 40'

**ELECTRICAL NOTES**

1. ALL UNDERGROUND CONDUIT SHALL BE TYPE RMC (RIGID NONMETALLIC CONDUIT), SCHEDULE 40 PVC AND SHALL BE INSTALLED PER USD 404.1419. ABOVE GRADE CONDUIT SHALL BE TYPE RMC (RIGID METALLIC CONDUIT). CONDUIT RISERS SHALL BE TYPE RMC WITH PVC COATING OR TAPE WRAP.
2. ALL CONDUIT WHICH WOULD OTHERWISE BE EMPTY SHALL INCLUDE A NYLON PULLSTRING AND 1/8" FOR LOCATING PURPOSES.
3. ALL CONDUCTORS SHALL BE STRANDED, 600-VOLT, TYPE THW INSULATED COPPER.
4. THE ELECTRICAL CONTRACTOR SHALL FURNISH AND INSTALL ALL ELECTRICAL COMPONENTS AND HARDWARE AS REQUIRED BY THE NATIONAL ELECTRICAL CODE, LATEST EDITION AND SHALL COMPLY WITH THE REQUIREMENTS OF THE INSPECTING AUTHORITY HAVING JURISDICTION.

Call before you Dig

Call 811

1-800-227-2800

CALL BEFORE YOU DIG OVERHEAD

1-702-227-2929

**FAST**

Call before you UnderGround.

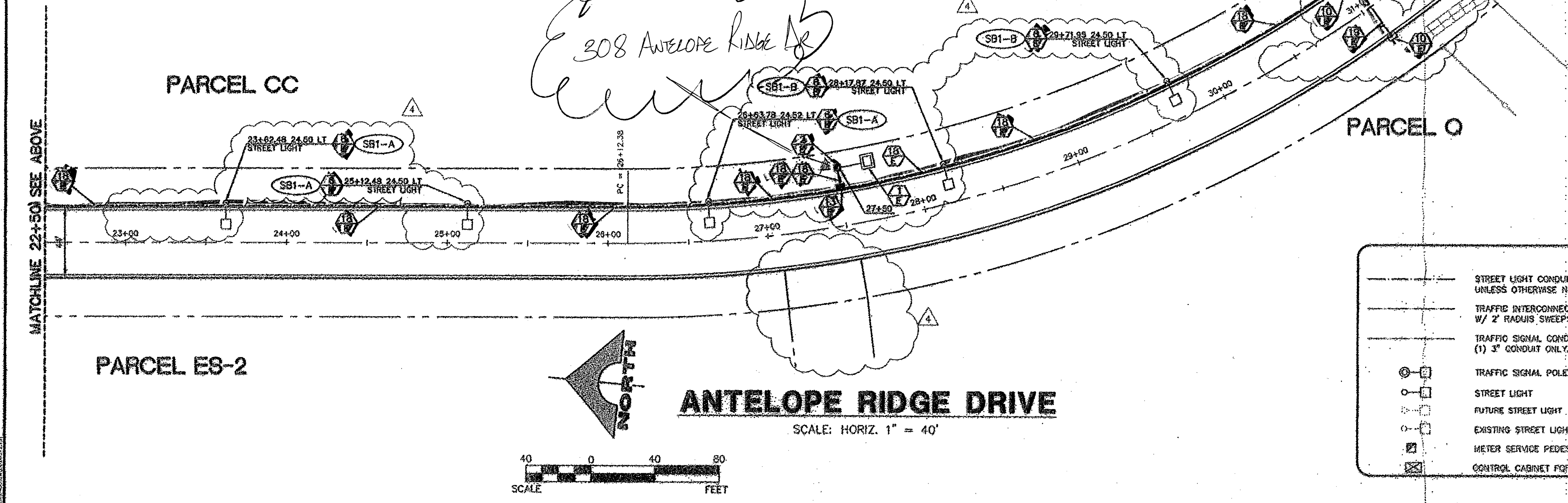
1-702-432-5300

DATE: 5/27/14

FOR ELECTRICAL COMPONENTS ONLY

- ELECTRICAL CONSTRUCTION NOTES**
- ⊕ PROPOSED NV ENERGY TRANSFORMER.
  - ⊕ SBI1: PROPOSED SERVICE PEDESTAL. REFER TO ELECTRICAL SERVICE NOTES. 30% ANTELOPE RIDGE
  - ⊕ FH02: PROPOSED SERVICE PEDESTAL. REFER TO ELECTRICAL SERVICE NOTES.
  - ⊕ NOT USED.
  - ⊕ NOT USED.
  - ⊕ SUMMERLIN TYPE 2B SINGLE STREETLIGHT PER SIS E-1 (150W).
  - ⊕ NOT USED.
  - ⊕ NOT USED.
  - ⊕ EXISTING STREETLIGHT. REFER TO SUMMERLIN VILLAGE 23A DESERT FOOTHILLS DRIVE IMPROVEMENTS OR TO SUMMERLIN VILLAGE 23A/23B ALTA DRIVE IMPROVEMENTS OR TO SUMMERLIN VILLAGE 20 UNIT 3 IMPROVEMENTS.
  - ⊕ PROPOSED NO. 3-1/2 PULLBOX PER USD 326.
  - ⊕ NOT USED.
  - ⊕ NOT USED.
  - ⊕ PROPOSED NO. 5 PULLBOX PER USD 326.
  - ⊕ NOT USED.
  - ⊕ NOT USED.
  - ⊕ NOT USED.
  - ⊕ NOT USED.
  - ⊕ PROPOSED 1-1/4" CONDUIT CONTAINING 2#4, 1#8 GND [STREETLIGHTING CONDUIT].
  - ⊕ PROPOSED 1-1/4" CONDUIT ONLY.
  - ⊕ PROPOSED 4" CONDUIT ONLY [FUTURE TRAFFIC SIGNAL INTERCONNECT WITH 2" RADIUS BENDS].
  - ⊕ NOT USED.
  - ⊕ NOT USED.
  - ⊕ NOT USED.
  - ⊕ NOT USED.
  - ⊕ NOT USED.
  - ⊕ EXISTING 1-1/4" CONDUIT CONTAINING 2#4, 1#8 GND.
  - ⊕ EXISTING 1-1/4" CONDUIT ONLY.
  - ⊕ STUB AND CAP 5' BEYOND EDGE OF CONSTRUCTION.
  - ⊕ NOT USED.
  - ⊕ NOT USED.
  - ⊕ CONNECT TO EXISTING CONDUIT STUB.
  - ⊕ NOT USED.
  - ⊕ NOT USED.

**NOTE:**  
REFER TO SHEET 3 FOR CITY OF LAS VEGAS STREETLIGHT NOTES.



**ANTELOPE RIDGE DRIVE**  
SCALE: HORIZ. 1" = 40'

**LEGEND**

—	STREET LIGHT CONDUIT (1) 1-1/4" 2#4, 1#8 GND. THW. UNLESS OTHERWISE NOTED	⊕	200A SERVICE PEDESTAL AND N.P.CO. TRANSFORMER
—	TRAFFIC INTERCONNECT CONDUIT (1) 4" CONDUIT W/ 2" RADIUS SWEEPS INTO PULLBOXES FOR FUTURE FIBER OPTIC.	⊕	CIRCUIT DESIGNATION: (CONTAINED WITHIN BOUNDARY)
—	TRAFFIC SIGNAL CONDUIT (1) 3" 3#4, 1#8 GND. THW. (1) 3" CONDUIT ONLY, WITH PULLSTRING, UNLESS OTHERWISE NOTED	⊕	N = SERVICE PEDESTAL
⊕	TRAFFIC SIGNAL POLE WITH STREET LIGHT	⊕	X = CIRCUIT
⊕	STREET LIGHT	⊕	⊕ 3-1/2 PULLBOX, MARKED "STREET LIGHTING" UNLESS OTHERWISE NOTED.
⊕	FUTURE STREET LIGHT	⊕	⊕ 5 PULLBOX, MARKED "TRAFFIC SIGNAL" UNLESS OTHERWISE NOTED.
⊕	EXISTING STREET LIGHT	⊕	⊕ P30 PULLBOX, MARKED "TRAFFIC SIGNAL" UNLESS OTHERWISE NOTED.
⊕	METER SERVICE PEDESTAL	⊕	⊕ NEVADA POWER TRANSFORMER AND METER SERVICE PEDESTAL
⊕	CONTROL CABINET FOR FUTURE TRAFFIC SIGNALS		

**THE HOWARD HUGHES COMPANY, LLC**

**VILLAGE 23B ANTELOPE RIDGE DRIVE IMPROVEMENTS**

**STREETLIGHT AND TRAFFIC PLAN**

SHEET **32** OF 37 SHEETS

JOB NO. 620228-235

AS-BUILT PAINTER PLANTIC 257-7175 08-13-14  
CLV DRAWING NO. 00705725