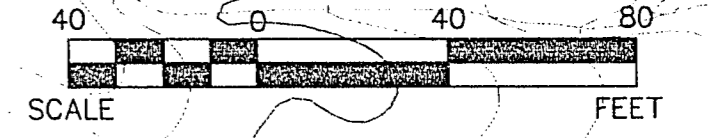
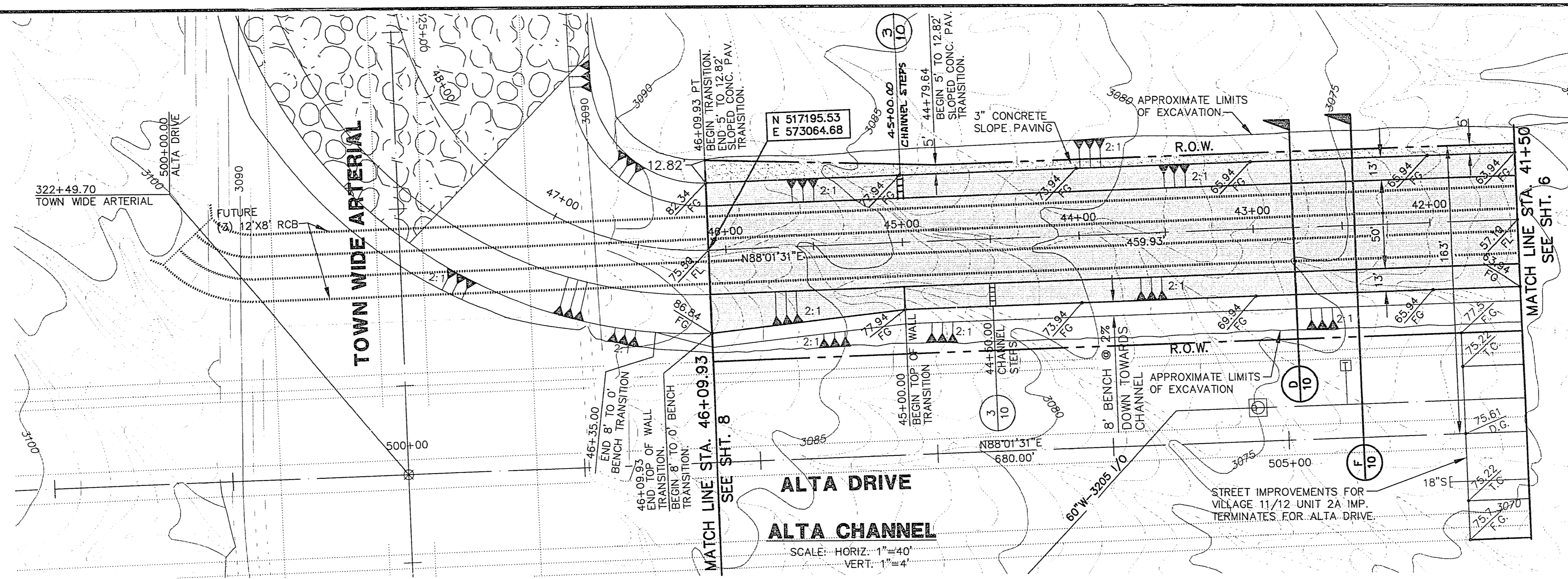


Xref: CHANTOPO.DWG

Drawing: C:\DWG\ALTA-CHAN\CHAN-4.DWG

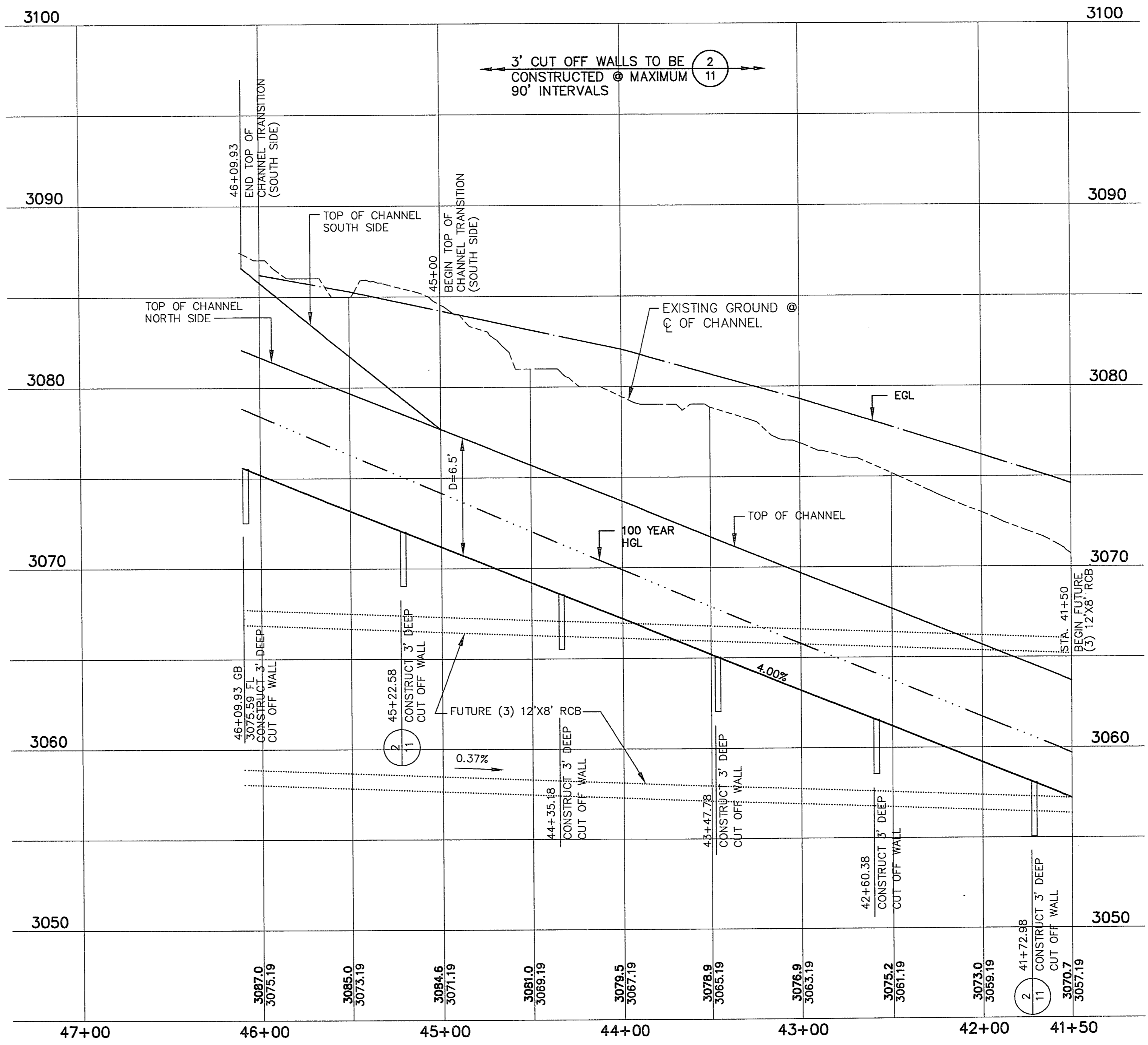
June 10, 1996 2:09:14 p.m.

JOB NO. 62011.215

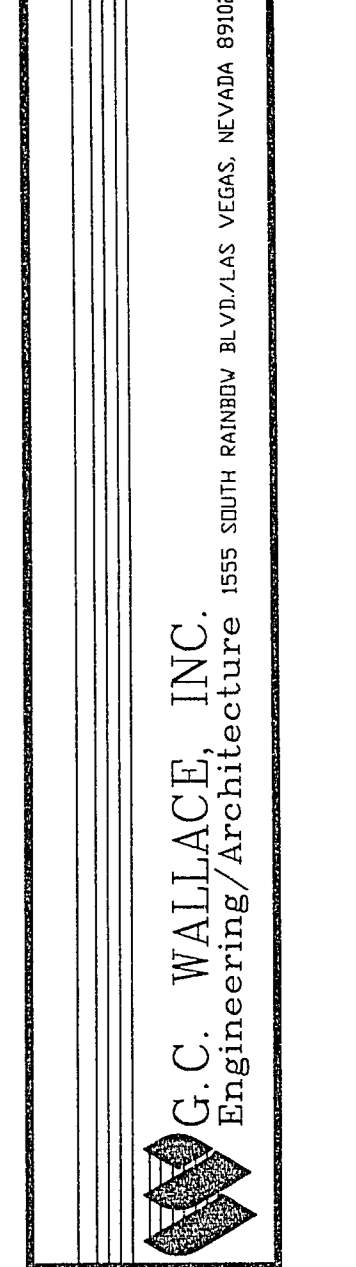


NOTE:
SEE SHT 3 FOR 6' CHAIN LINK FENCE LOCATION

NOTE:
SEE VILLAGE 11/12 THE ARBORS UNIT 2A IMPROVEMENTS FOR ALTA DRIVE.



RECOMMENDED	ROY A. DAVIS III	DATE	REV.	DATE	DESCRIPTION
		6/19/96			
		6/19/96			



SUMMERLIN
 VILLAGE 11/12 ALTA DRIVE
 DRAINAGE CHANNEL
 PLAN & PROFILE
 STA. 41+50 TO 46+09.93

G.C. WALLACE, INC.
 Engineering/Architecture
 1555 SOUTH RAINBOW BLVD./LAS VEGAS, NEVADA 89106

SHEET
7
 SHT 7 OF 11

FINAL SUBMITTAL