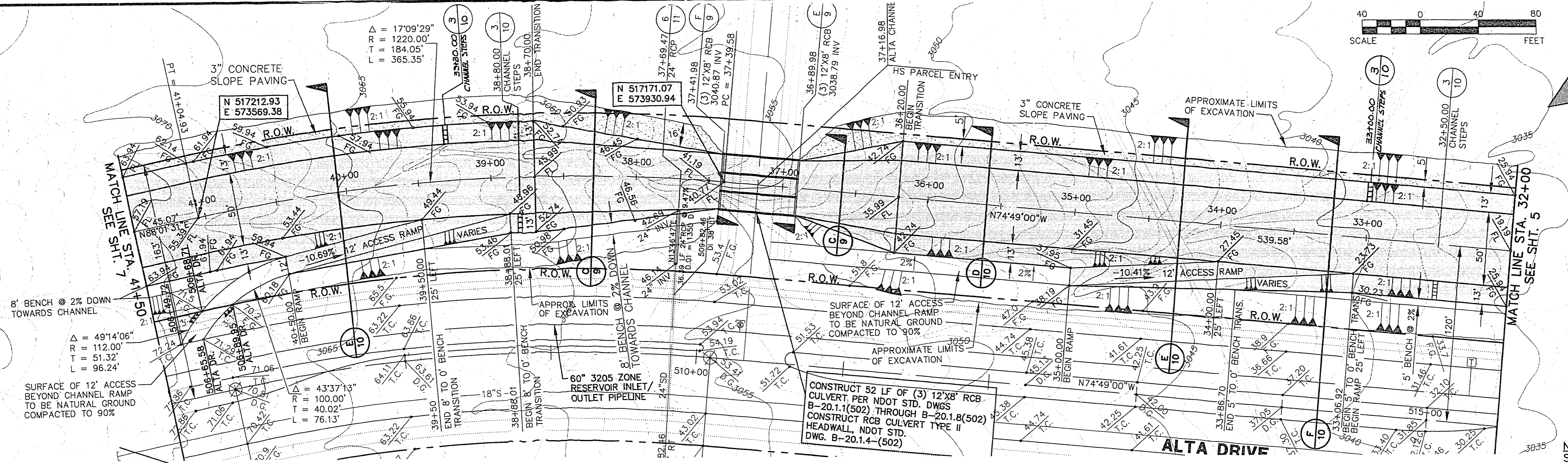


June 13, 1996 11:05:37 a.m. Drawing: C:\DWG\ALTA-CHAN\CHAN-3.DWG Xref: CHANTOP.DWG

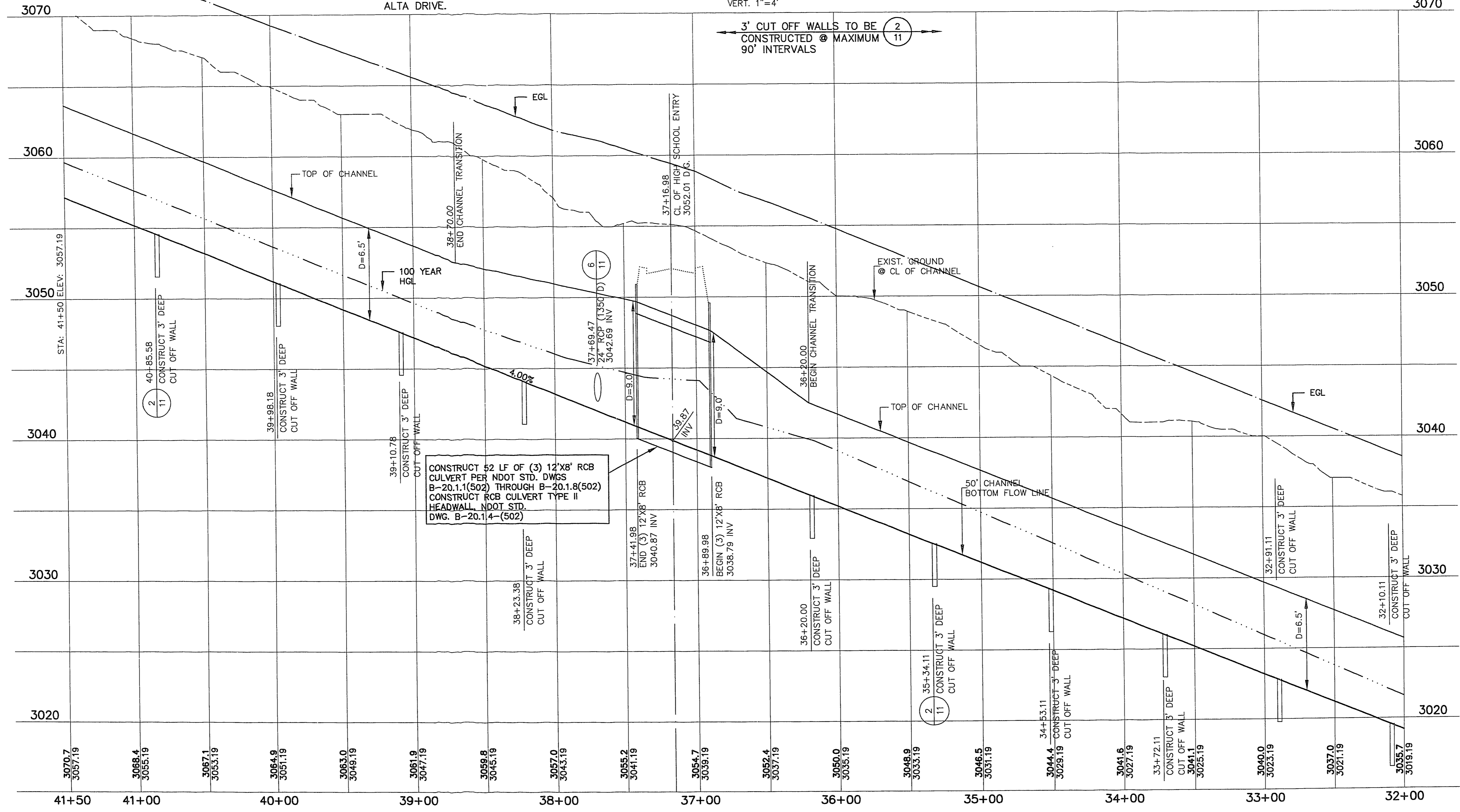
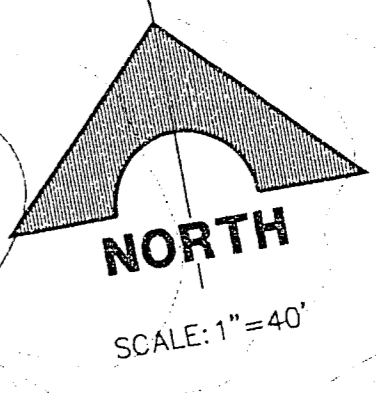
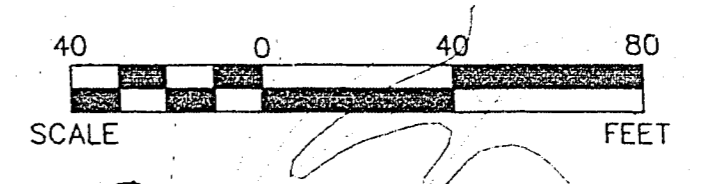
JOB NO. 62011.215



NOTE:
SEE VILLAGE 11/12 THE ARBORS
UNIT 2A IMPROVEMENTS FOR
ALTA DRIVE.

ALTA CHANNEL
SCALE: HORIZ. 1"=40'
VERT. 1"=4'

NOTE:
SEE SHT 3 FOR 6' CHAIN
LINK FENCE AND SWING
GATE LOCATION



RECOMMENDED	ROY A. DANIS III	DATE	04/94
DATE	04/94	REV.	1
DESCRIPTION	VILLAGE 11/12 ALTA DRIVE DRAINAGE CHANNEL PLAN & PROFILE STA. 32+00 TO 41+50		
APPROVAL			
FINAL SUBMITTAL			

SHEET 6 OF 11