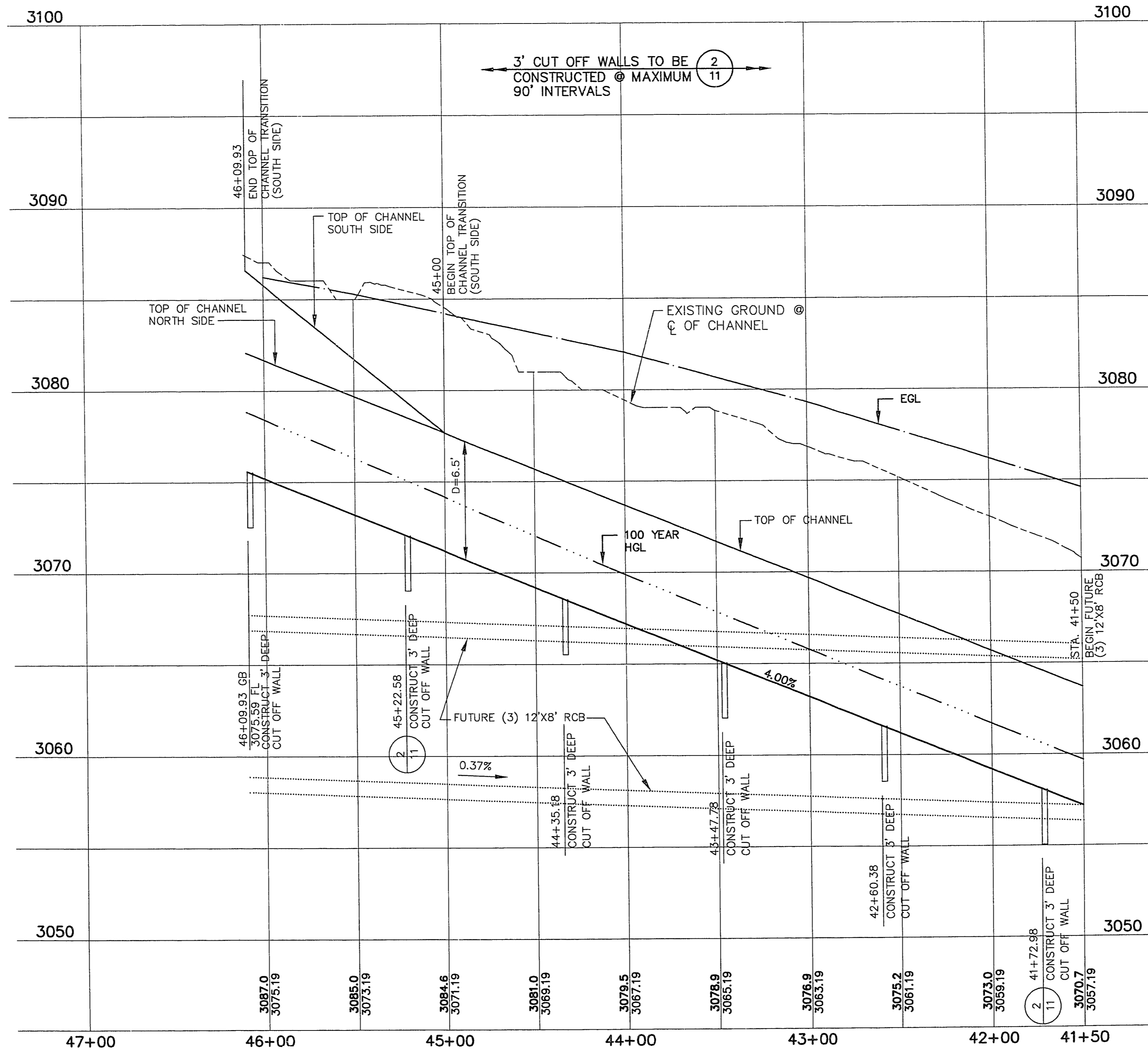
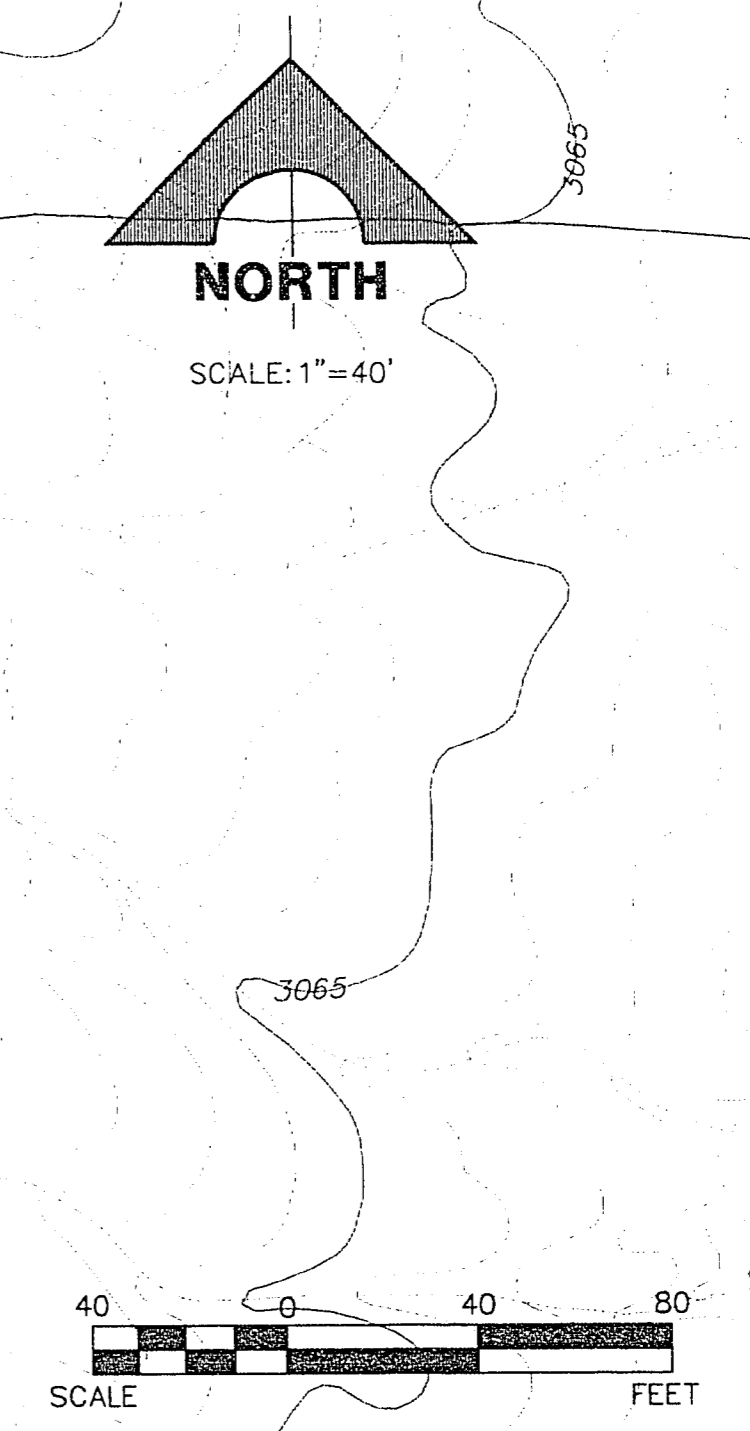
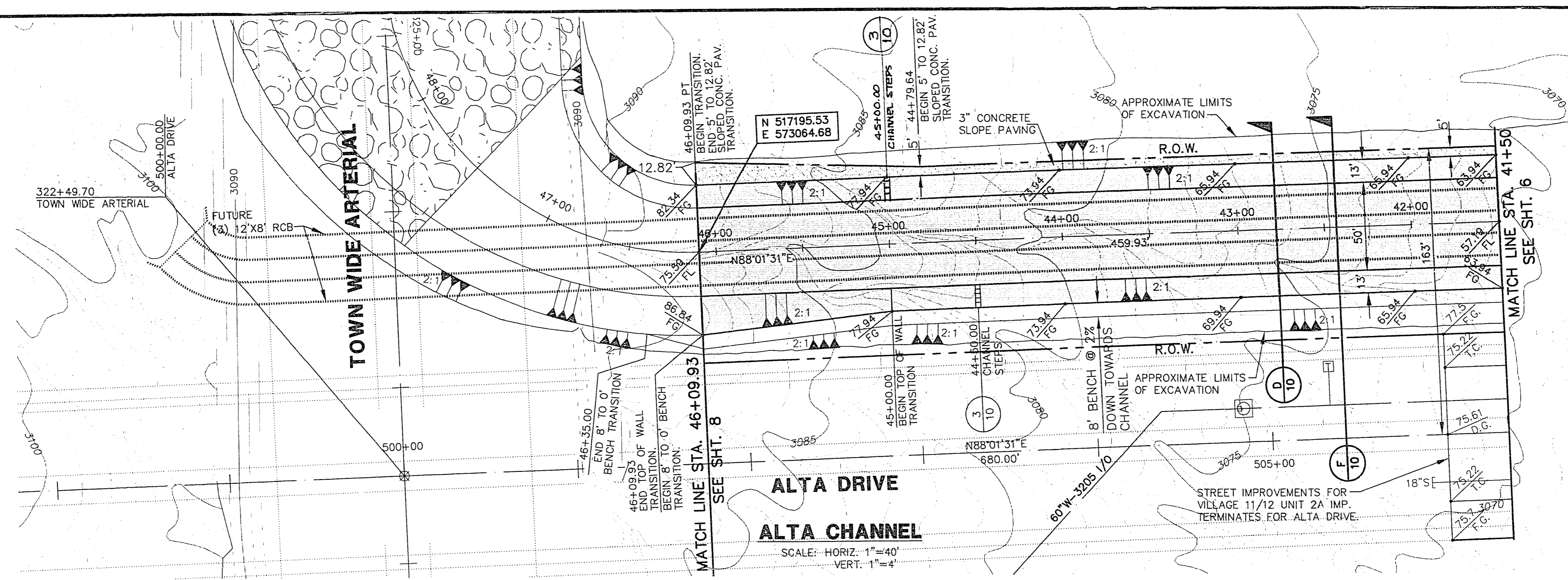


Xrefs: CHANTOPC.DWG

Drawing: C:\DWG\ALTA-CHN\CHAN-4.DWG

June 10, 1996 2:09:14 p.m.

JOB NO. 62011.215
L.G./RAS



NOTE:
SEE SHT 3 FOR 6' CHAIN
LINK FENCE LOCATION

NOTE:
SEE VILLAGE 11/12 THE ARBORS
UNIT 2A IMPROVEMENTS FOR
ALTA DRIVE.

RECOMMENDED
ROY A. DAVIS III
P.E. NO. 6194
DATE 6/19/96

RECOMMENDED
ROY A. DAVIS III
P.E. NO. 6194
DATE 6/19/96

RECOMMENDED
ROY A. DAVIS III
P.E. NO. 6194
DATE 6/19/96

REGISTERED PROFESSIONAL ENGINEER-STATE OF NEVADA
G. C. WALLACE, INC.
Engineering/Architecture
1555 SOUTH RANNEY BLVD./LAS VEGAS, NEVADA 89102

SUMMERLIN
VILLAGE 11/12 ALTA DRIVE
DRAINAGE CHANNEL
PLAN & PROFILE
STA. 41+50 TO 46+09.93

SHEET
7
SHT 7 OF 11

FINAL SUBMITTAL