

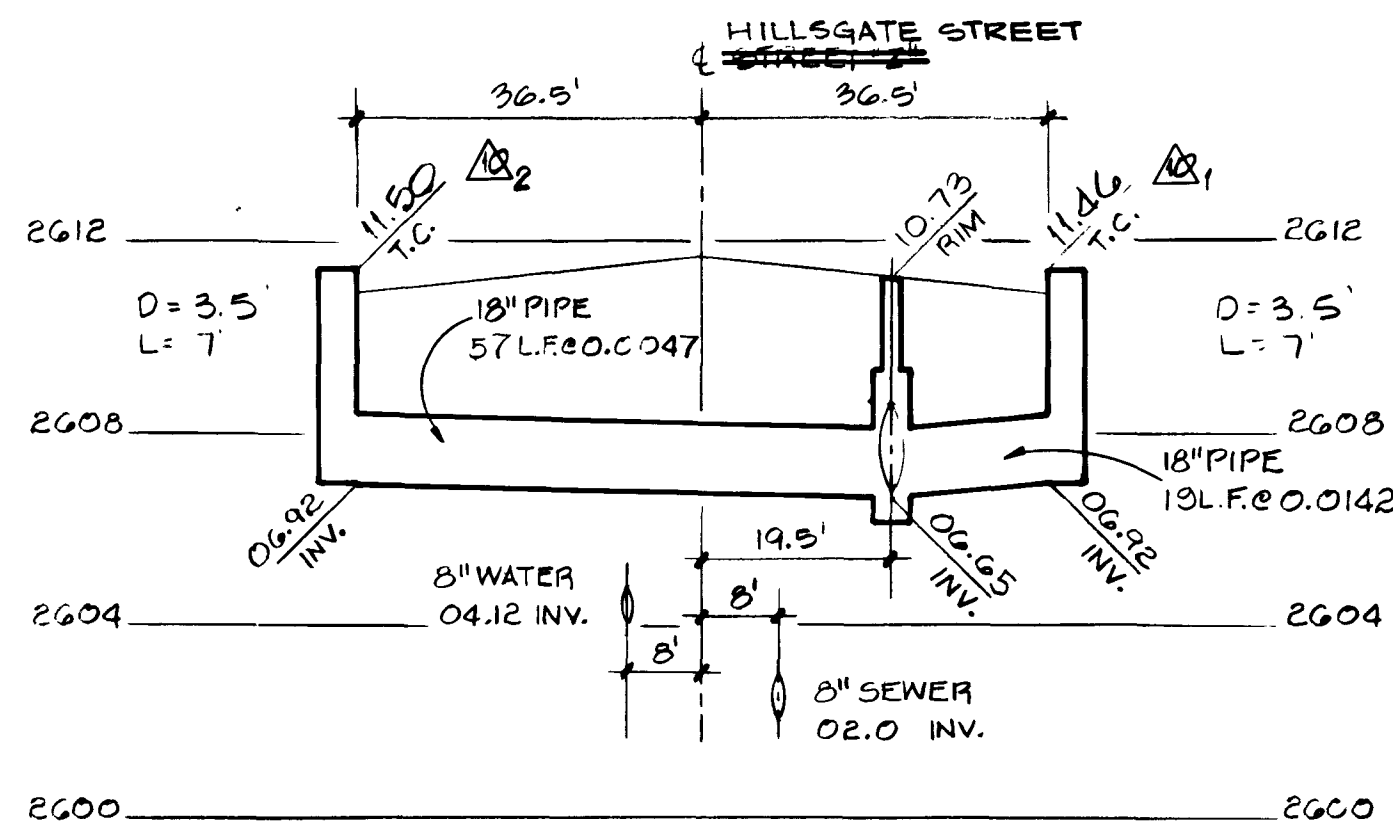
JOB NO. 620.3148

RECORD DRAWINGS  
(PHASE I & II)

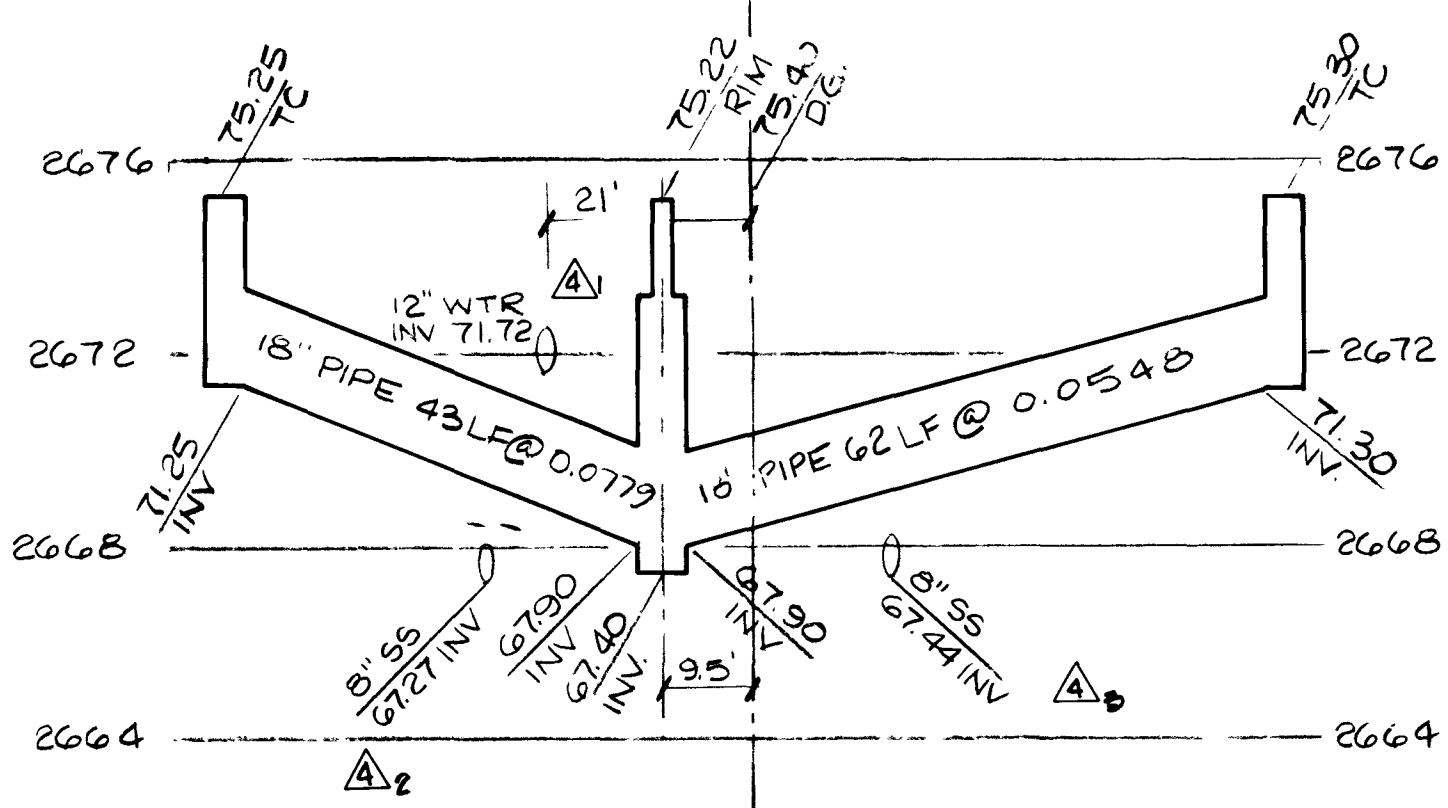
THESE PLANS SHOW RECORD INFORMATION RECEIVED FROM:

CONTRACTOR: **WELLS CARGO & ACME ELECTRIC**  
DATE: **7/8/92**

THIS DATA MAY OR MAY NOT REFLECT THE ACTUAL FIELD LOCATIONS. ALL DATA SHOULD BE CONFIRMED PRIOR TO USE ON DEVELOPMENT OR ENGINEERING PLANS.

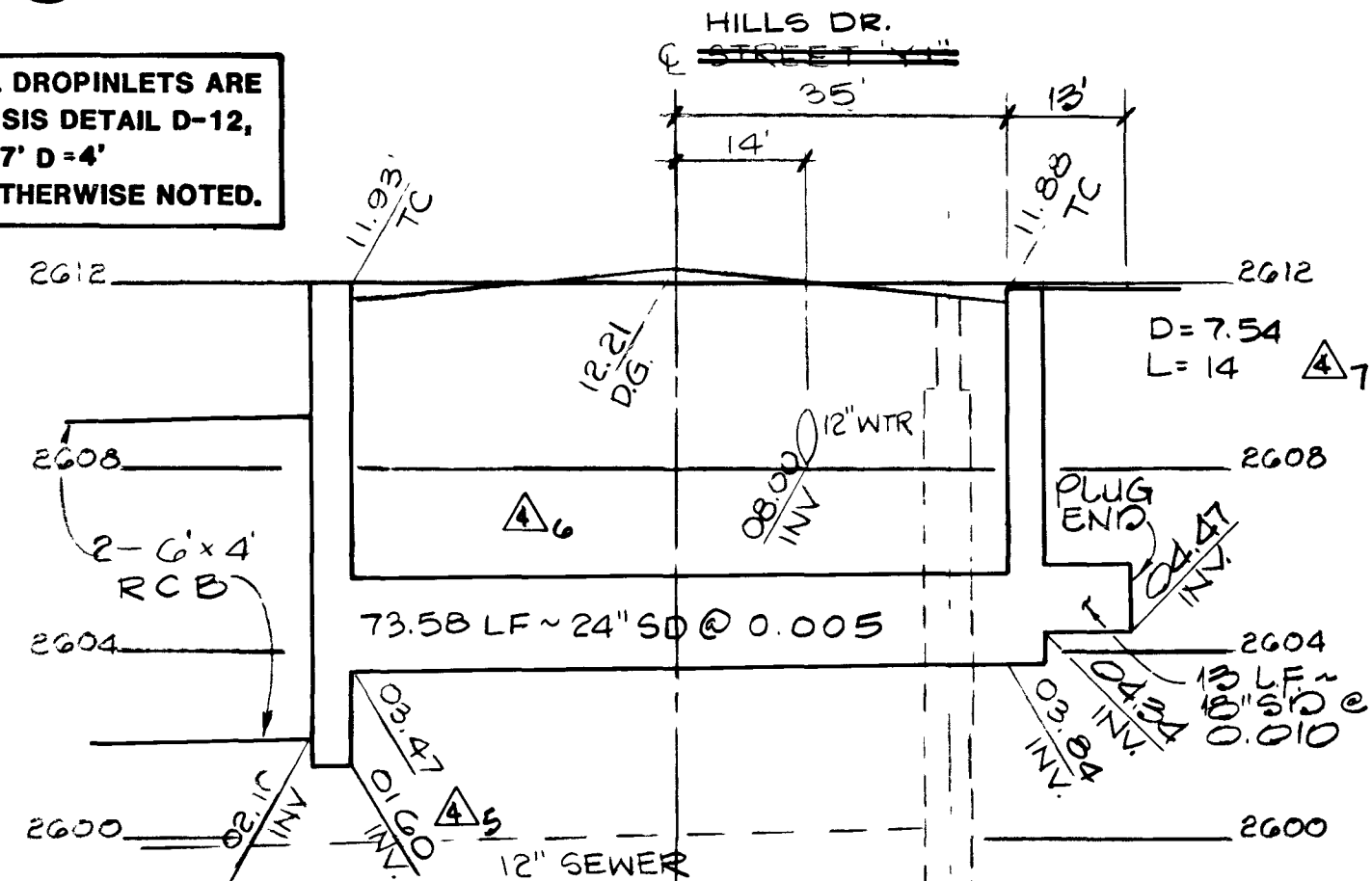


44 81+14.08; 36.5' LT. & RT.  
D.I. + Z-1L&Z-1R

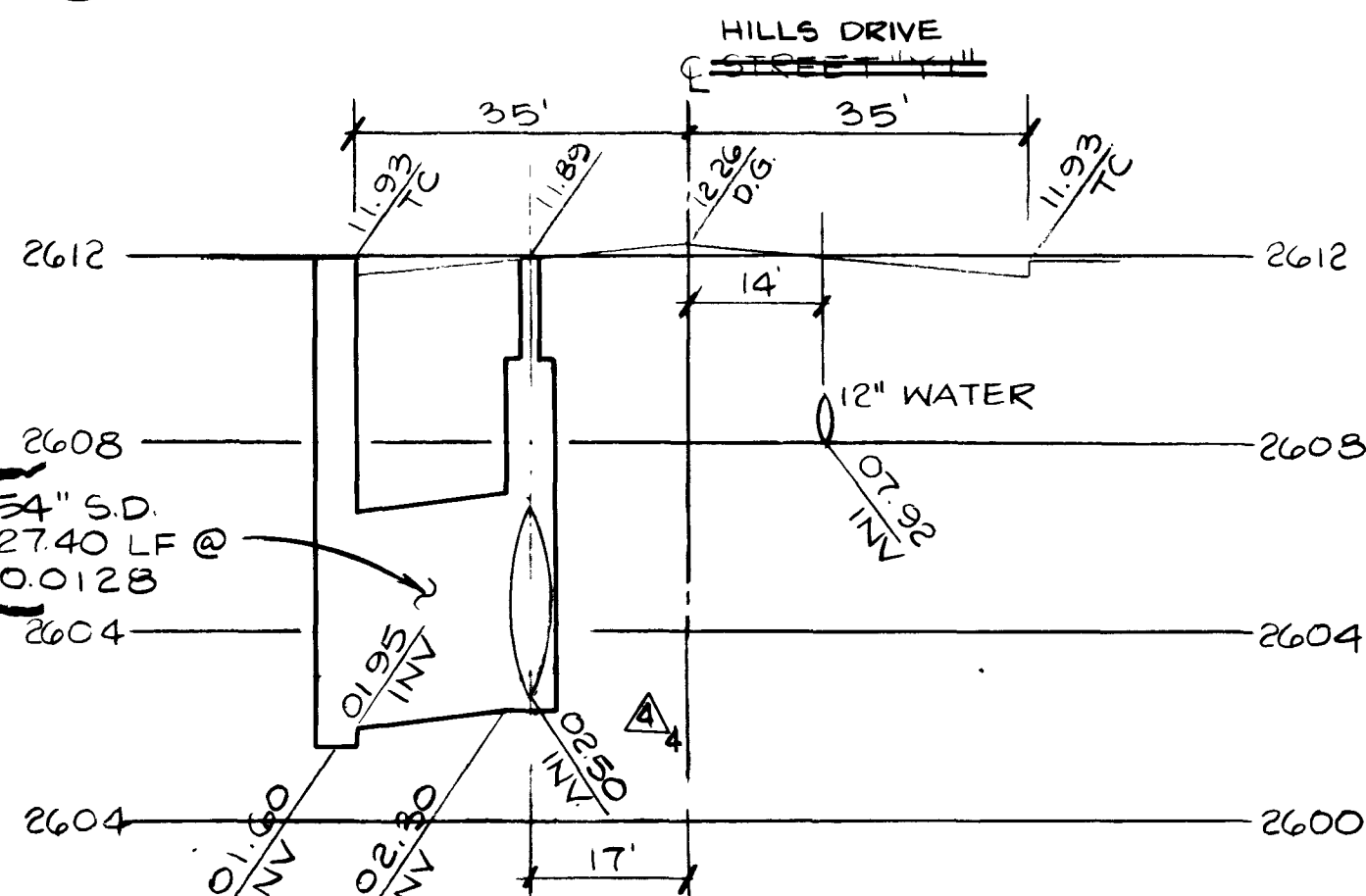


43 252+05.32, 54.5' RT. & LT.  
D.I. #7-L, 7-1R

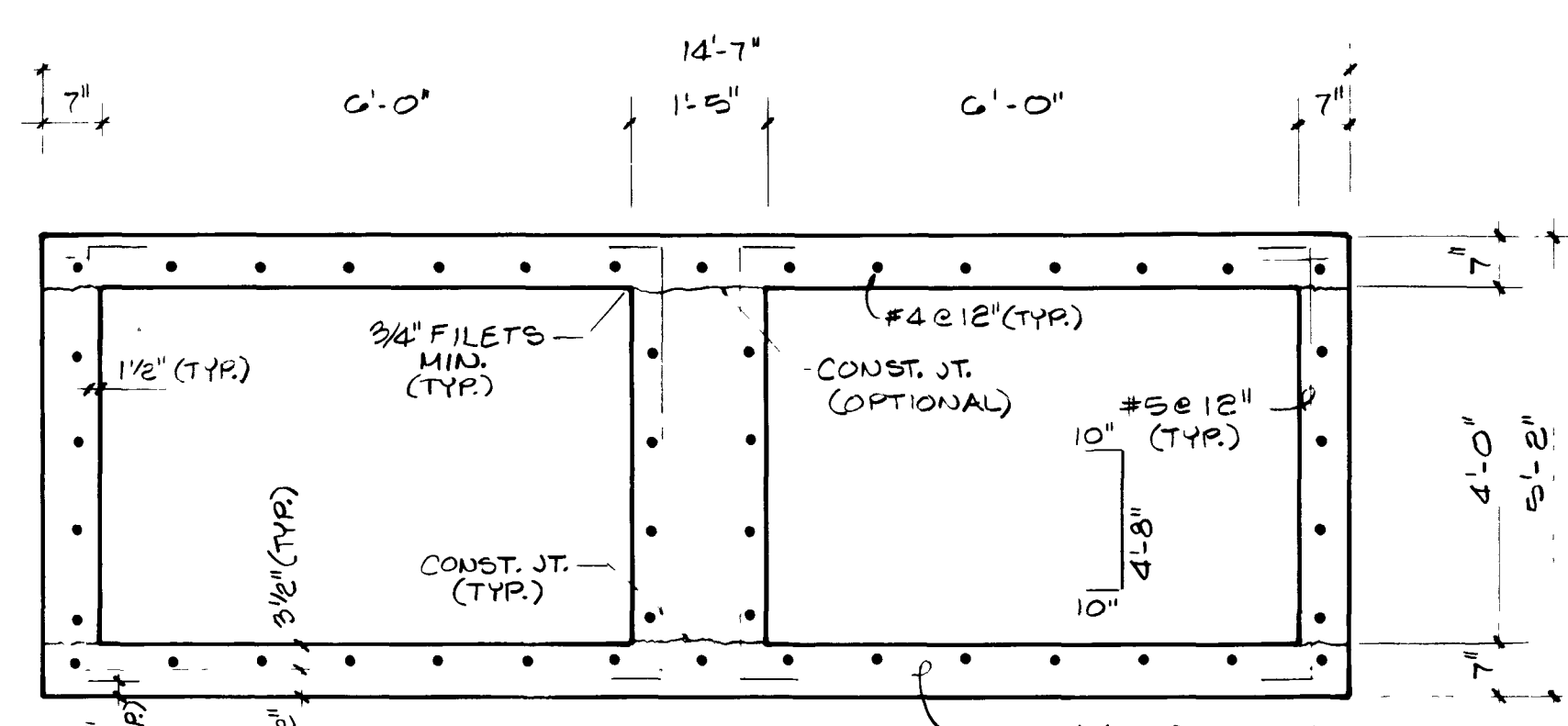
NOTE: ALL DROPINLETS ARE TYPE "A" SIS DETAIL D-12, W-7' D-4' UNLESS OTHERWISE NOTED.



42 169+34.85, 35' RT.  
D.I. + C-3R

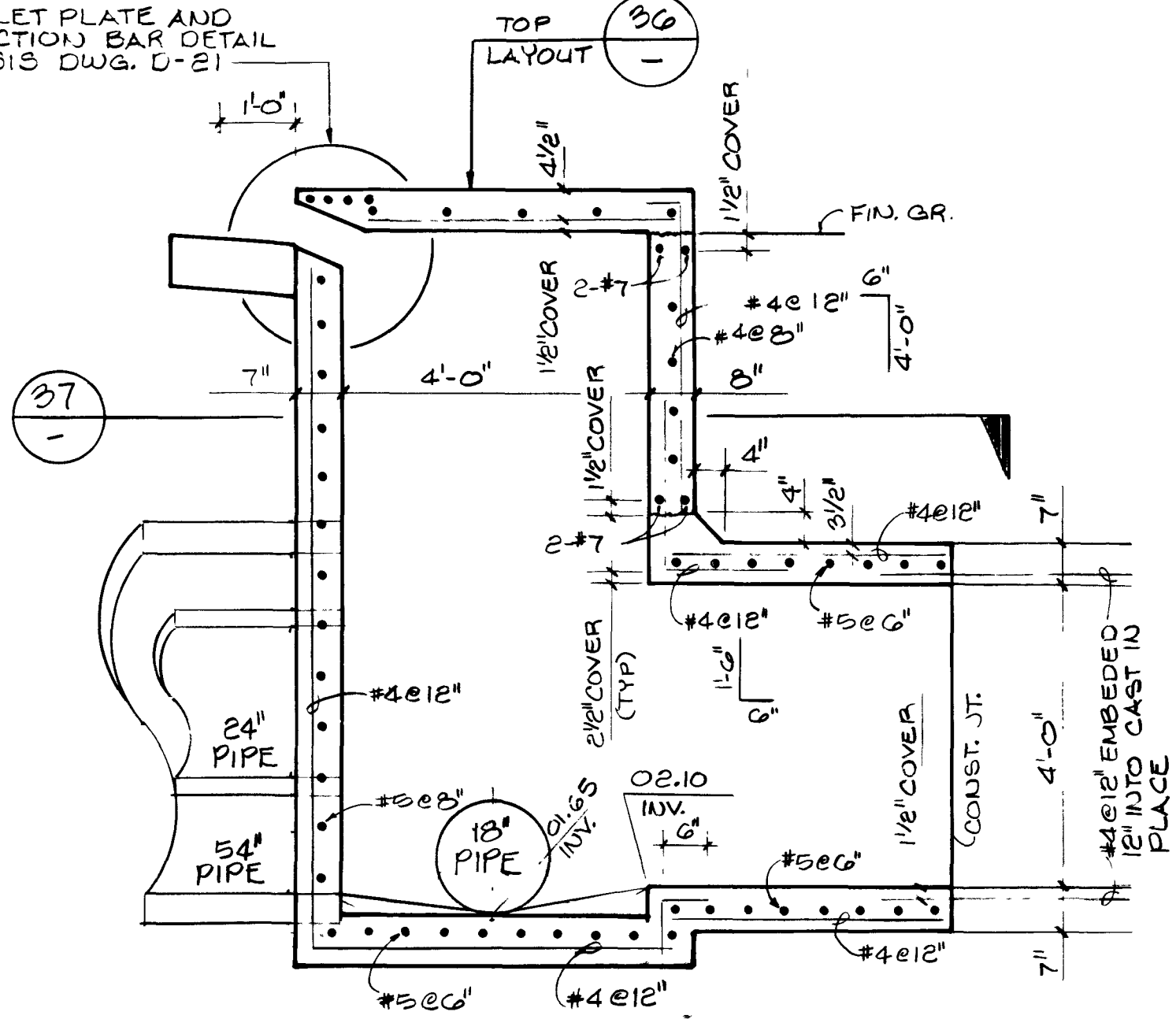


41 169+51.44, 35' LT.  
D.I. + C-3L

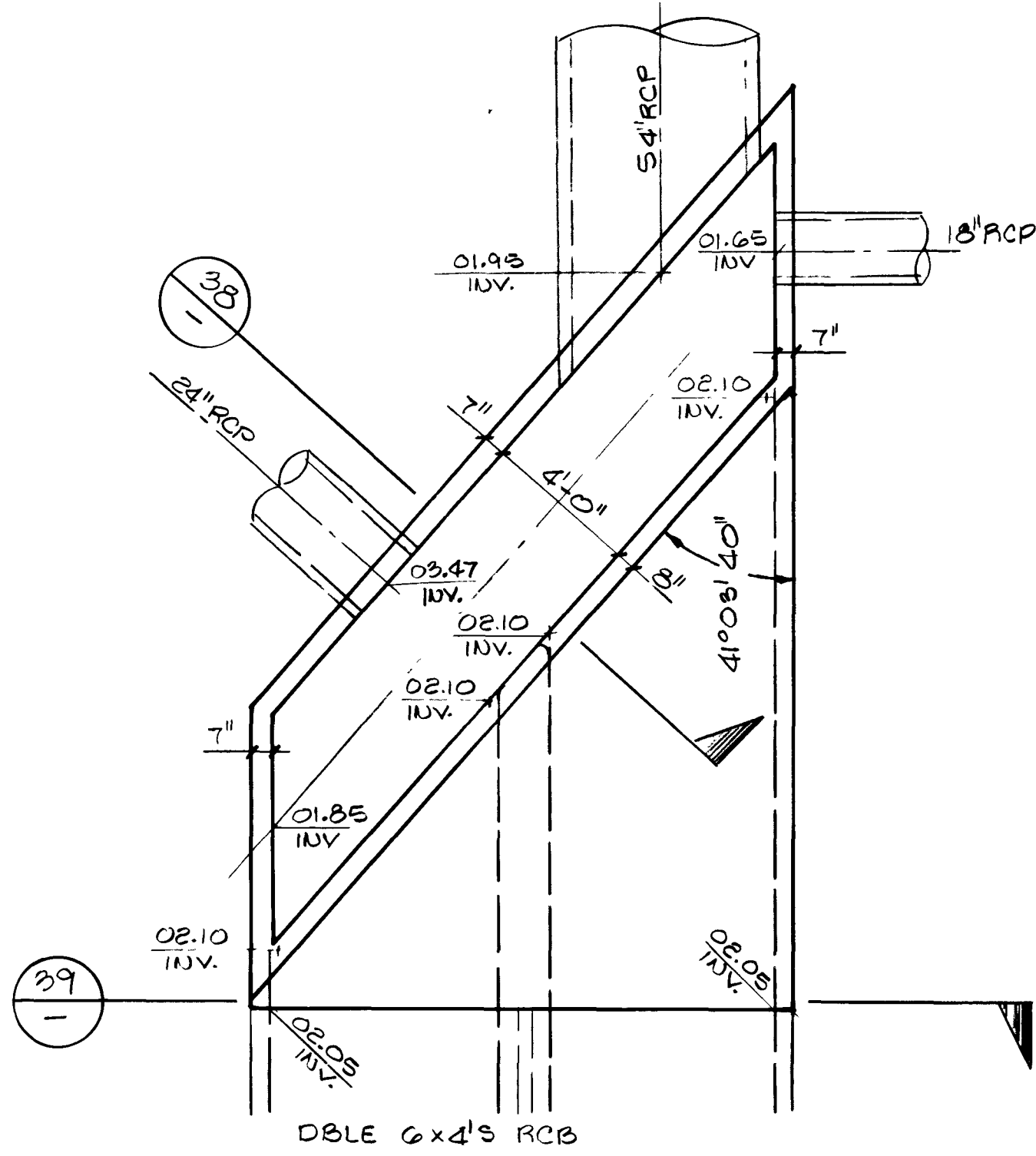


39 SPECIAL DROP INLET SECTION C

FOR INLET PLATE AND PROTECTION BAR DETAIL SEE SIS DWG. D-21

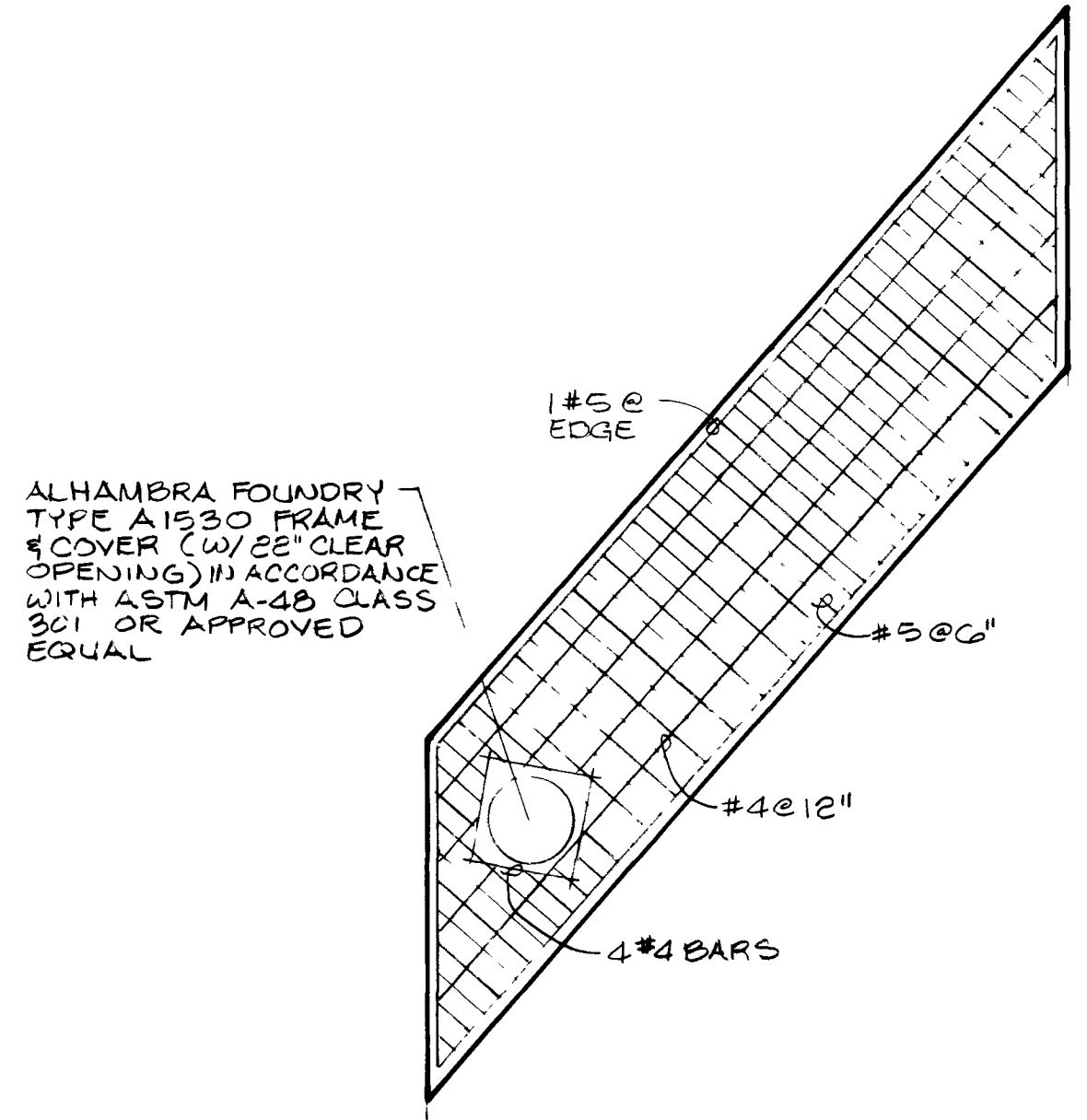


38 SPECIAL DROP INLET SECTION B

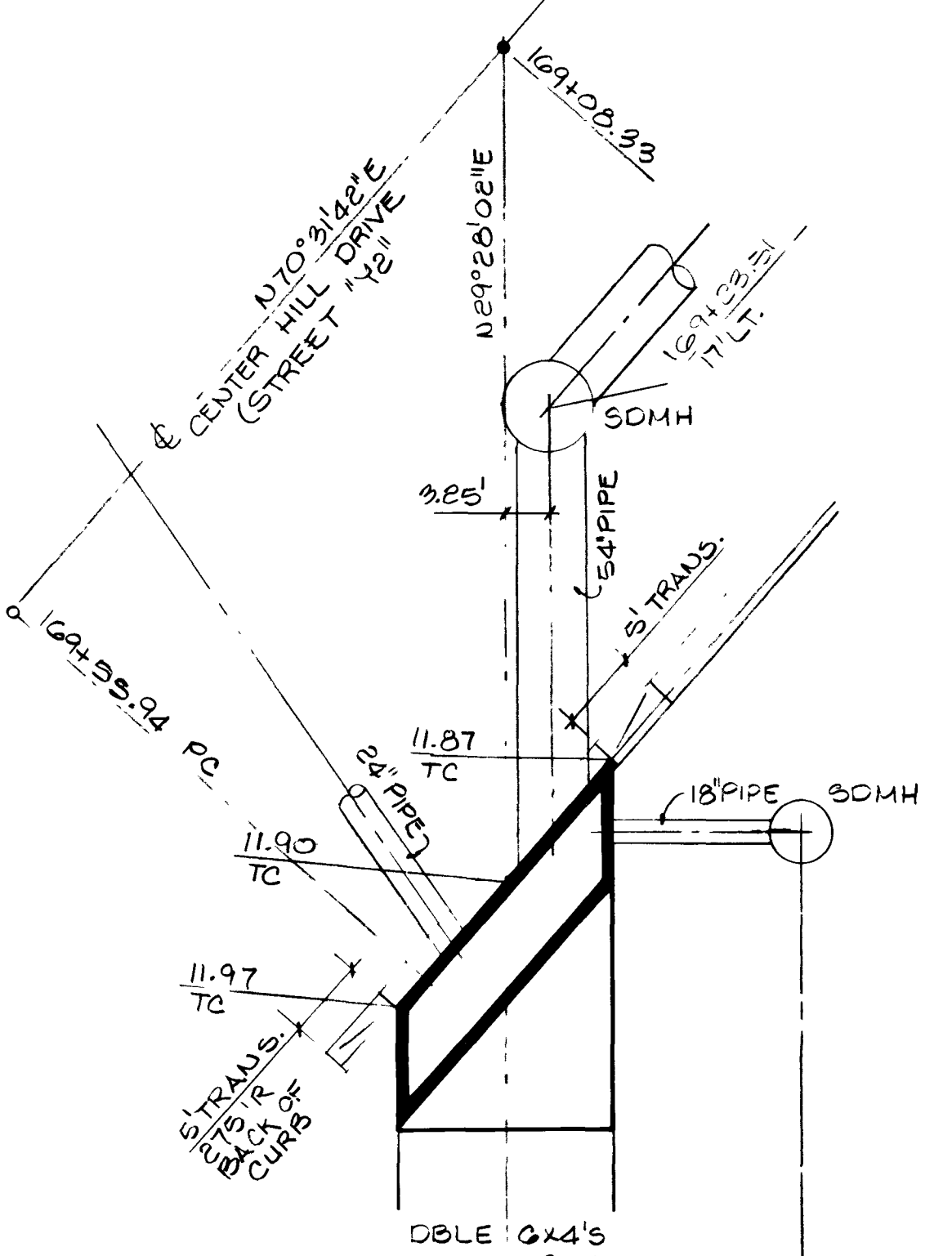


37 SPECIAL DROP INLET SECTION A

NOTE: SEE SEWER/STORM DRAIN VS. WATERLINE CROSSING NOTE ON SHEET W-3-16.



36 SPECIAL DROP INLET TOP LAYOUT



35 SPECIAL DROP INLET LAYOUT

REV	DATE	DESCRIPTION
1	7/8/92	RECORD DRAWINGS
2	8/13/92	REVISION
3	8/13/92	REVISION
4	8/13/92	REVISION
5	8/13/92	REVISION
6	8/13/92	REVISION
7	8/13/92	REVISION
8	8/13/92	REVISION
9	8/13/92	REVISION
10	8/13/92	REVISION

RECORD DRAWINGS  
DATE: 7/8/92  
DRAWN BY: [Signature]  
CHECKED BY: [Signature]  
SCALE: AS SHOWN  
SHEET NO. 18 OF 44

1555 SOUTH DANBURY BLVD., LAS VEGAS, NEVADA 89102  
**G.C. WALLACE, INC.**  
Engineering/Architecture

HOWARD HUGHES PROPERTIES  
SUMMERLIN VILLAGE 1 SOUTH  
STORM DRAIN SECTIONS

SHEET  
**I-15**  
SHT. 18 OF 44

144

23 3 37

107-V1815



④ GENERAL VIEW (SEE SECTION 1)



⑤ GENERAL VIEW (SEE SECTION 2)



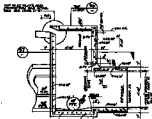
⑥ GENERAL VIEW (SEE SECTION 3)



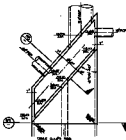
⑦ GENERAL VIEW (SEE SECTION 4)



⑧ GENERAL VIEW (SEE SECTION 5)

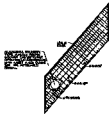


⑨ GENERAL VIEW (SEE SECTION 6)

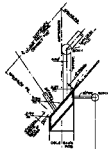


⑩ GENERAL VIEW (SEE SECTION 7)

NOTE: ALL DIMENSIONS ARE IN FEET AND INCHES UNLESS OTHERWISE SPECIFIED.



⑪ GENERAL VIEW (SEE SECTION 8)



⑫ GENERAL VIEW (SEE SECTION 9)

**NOTES:**  
 1. THE DRAWING AND SPECIFICATIONS ARE THE PROPERTY OF THE U.S. GOVERNMENT AND ARE TO BE USED FOR THE PURPOSES SPECIFIED THEREIN.  
 2. ALL DIMENSIONS ARE IN FEET AND INCHES UNLESS OTHERWISE SPECIFIED.  
 3. UNLESS OTHERWISE SPECIFIED, ALL DIMENSIONS ARE TO BE MAINTAINED TO THE CLOSEST FRACTION OF AN INCH.