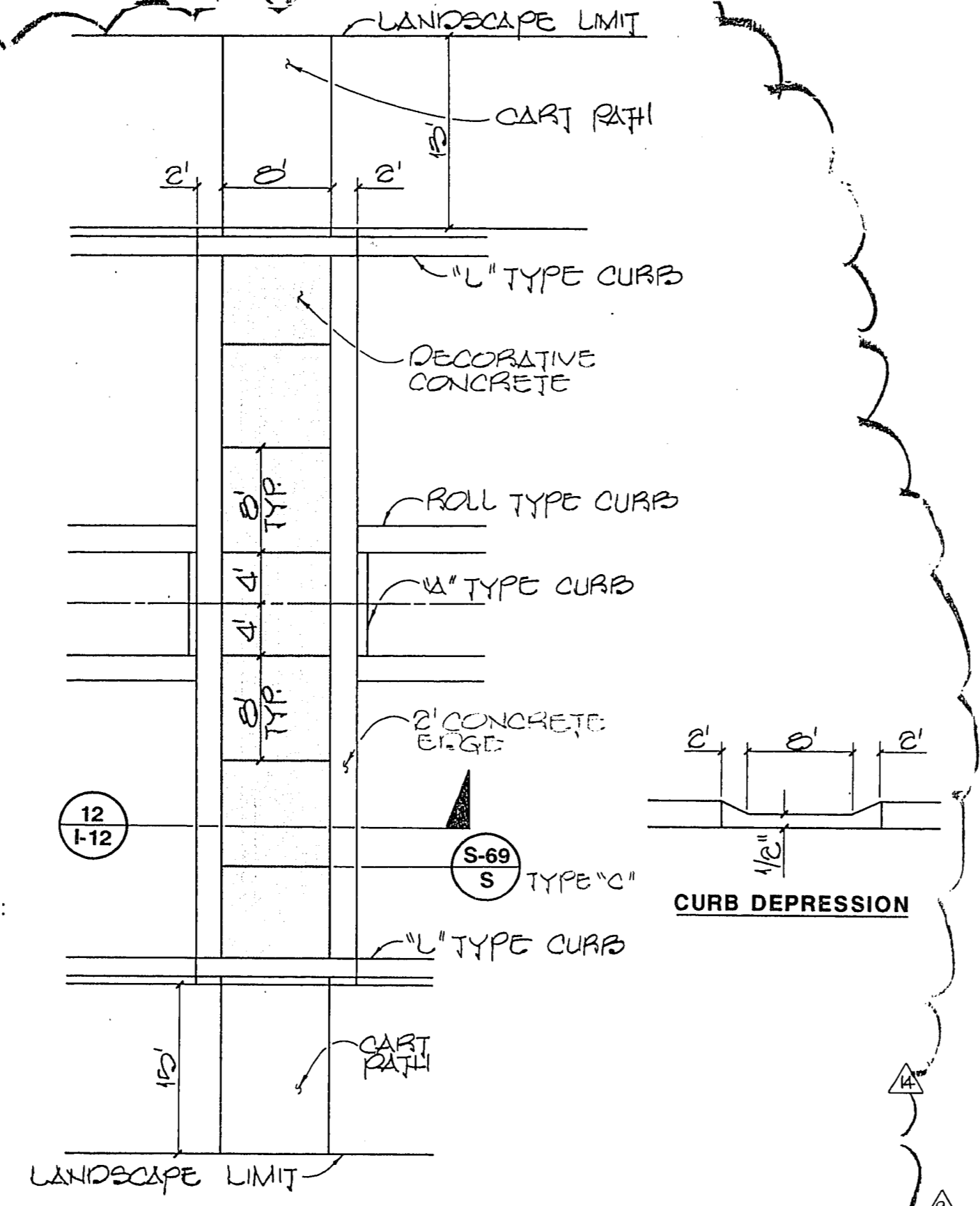


RECORD DRAWINGS
THESE PLANS SHOW RECORD INFORMATION RECEIVED FROM:

CONTRACTOR: **WELLS CARGO & ACME ELECTRIC**
DATE: **7/8/92**

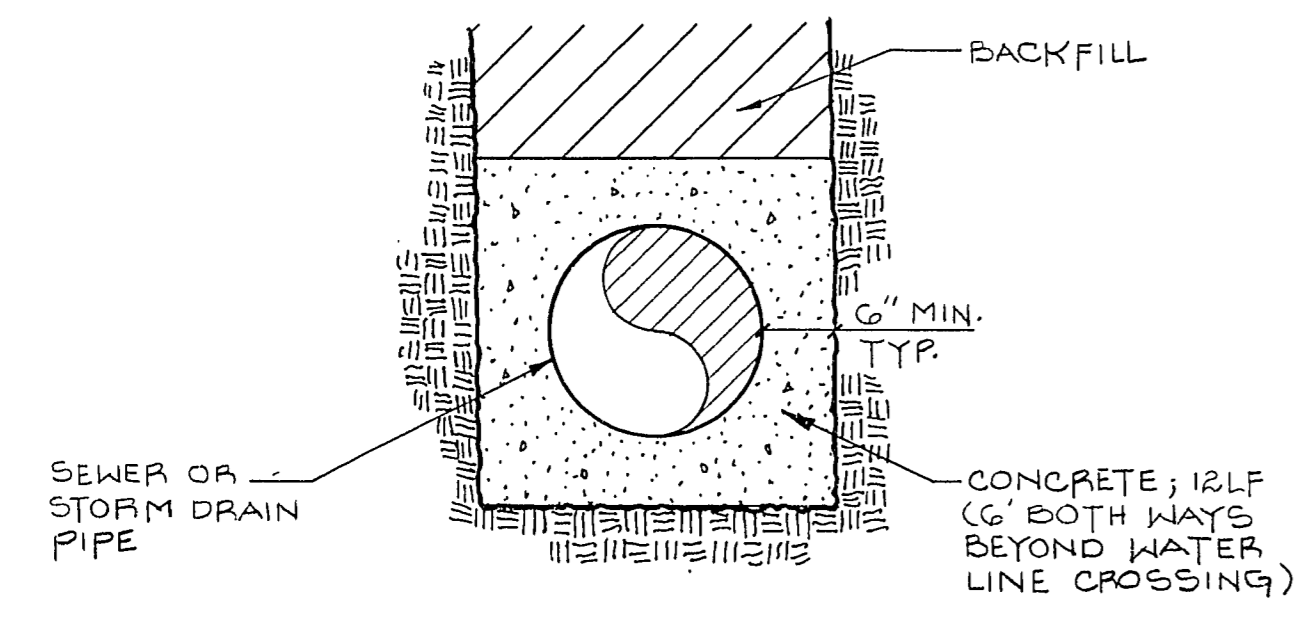
THIS DATA MAY OR MAY NOT REFLECT THE ACTUAL FIELD LOCATIONS. ALL DATA SHOULD BE CONFIRMED PRIOR TO USE ON DEVELOPMENT OR ENGINEERING PLANS.

12A SPECIAL "L" TYPE CURB FOR DECORATIVE CONCRETE (SIMILAR SITUATION WITH TYPE "A" CURB)



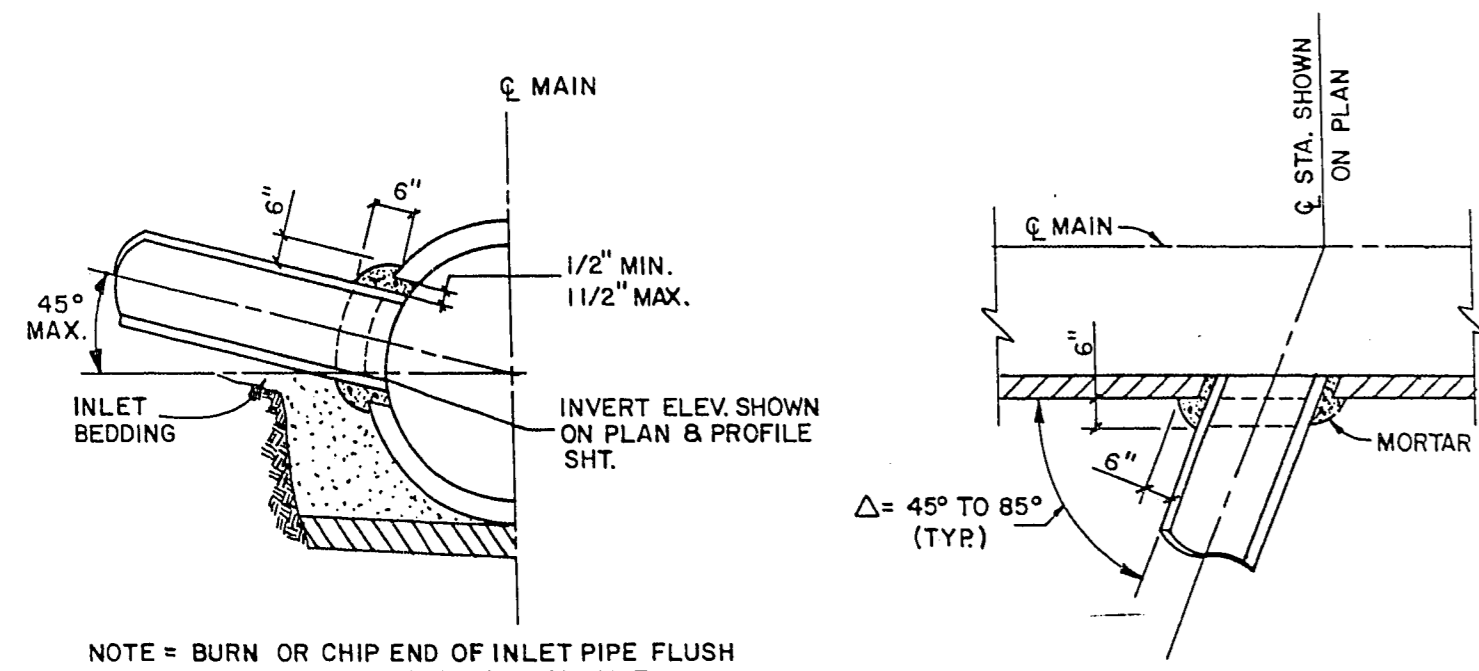
12B CART PATH CROSSING

NOTE: ALL DROP INLETS ARE TYPE "A" SIS DETAIL-12, W 7' D 4' UNLESS OTHERWISE NOTED.



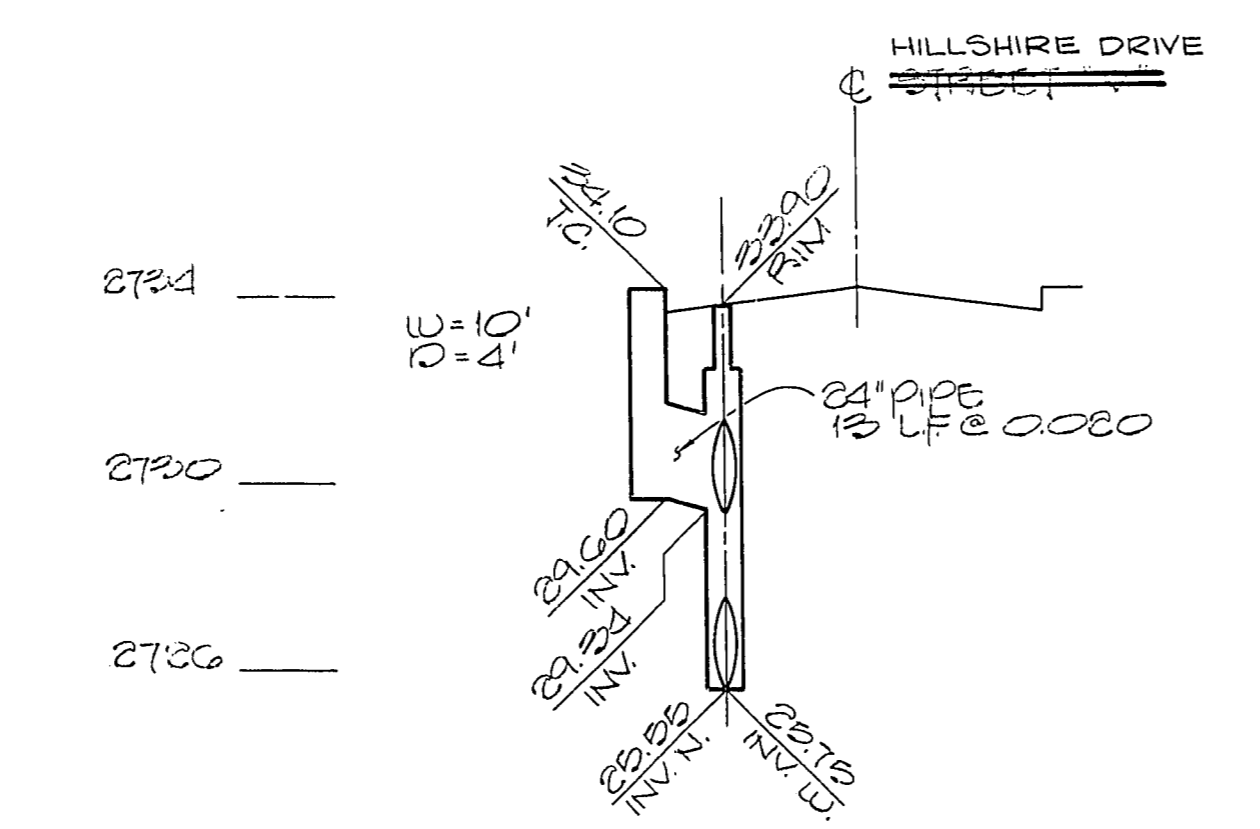
11B PIPE ENCASEMENT

NOTE: SEE SEWER / STORM DRAIN VS. WATERLINE CROSSING NOTE ON SHEET WS-16.

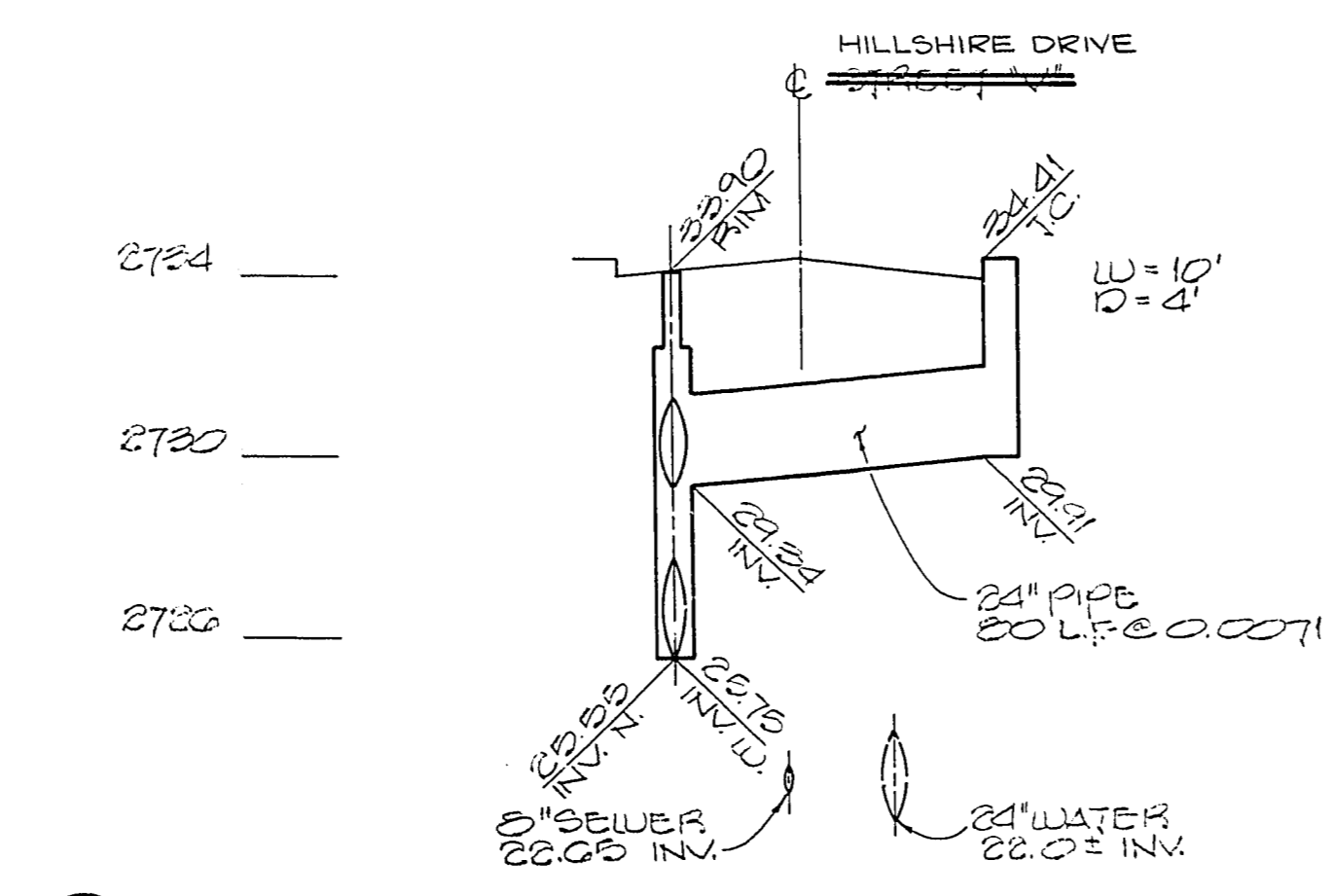


11A STORM DRAIN LATERAL JUNCTION DETAIL TYPE "A"

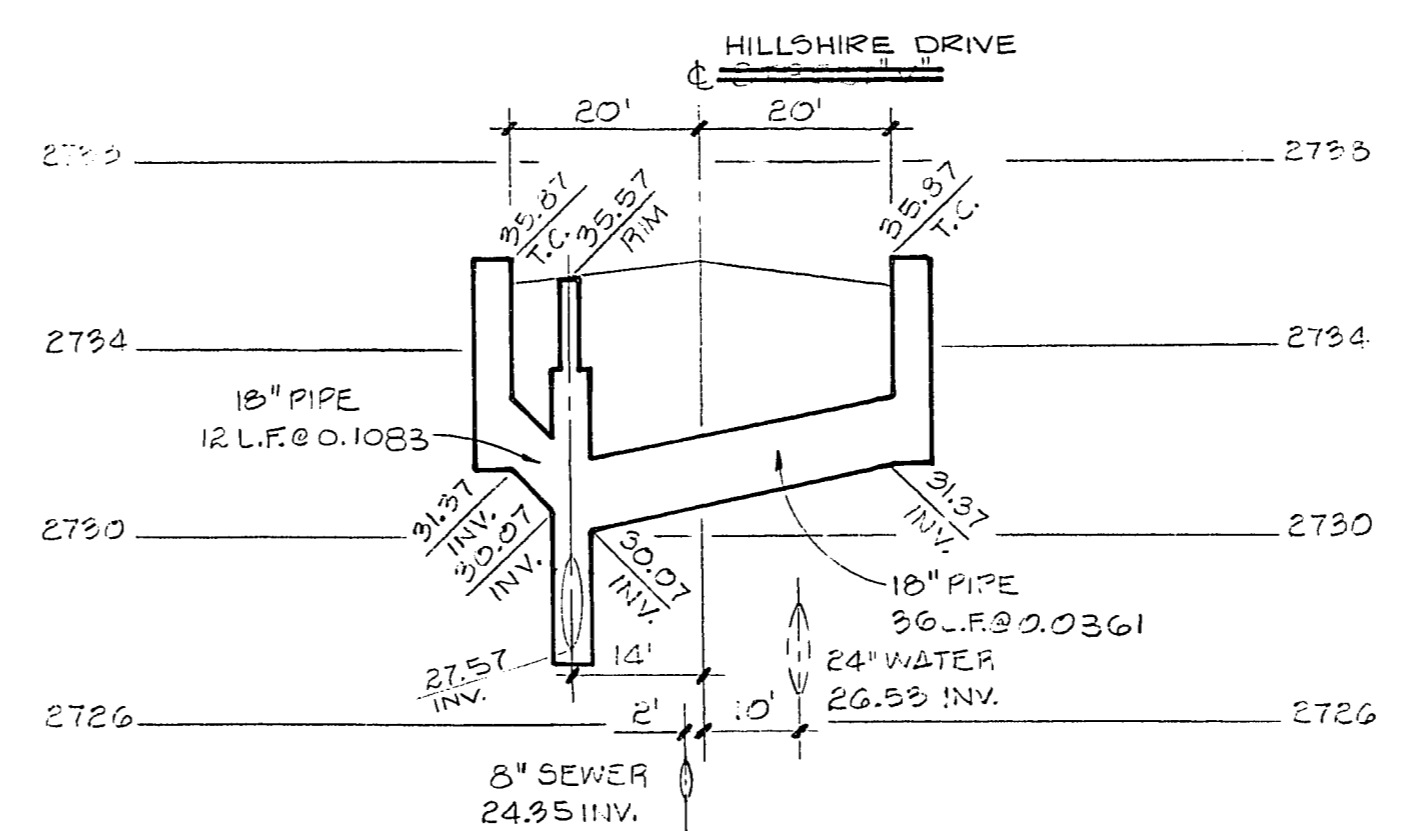
NOTE = BURN OR CHIP END OF INLET PIPE FLUSH WITH INNER SURFACE OF MAIN PIPE. ROUND EDGES OF MAIN PIPE & INLET PIPE



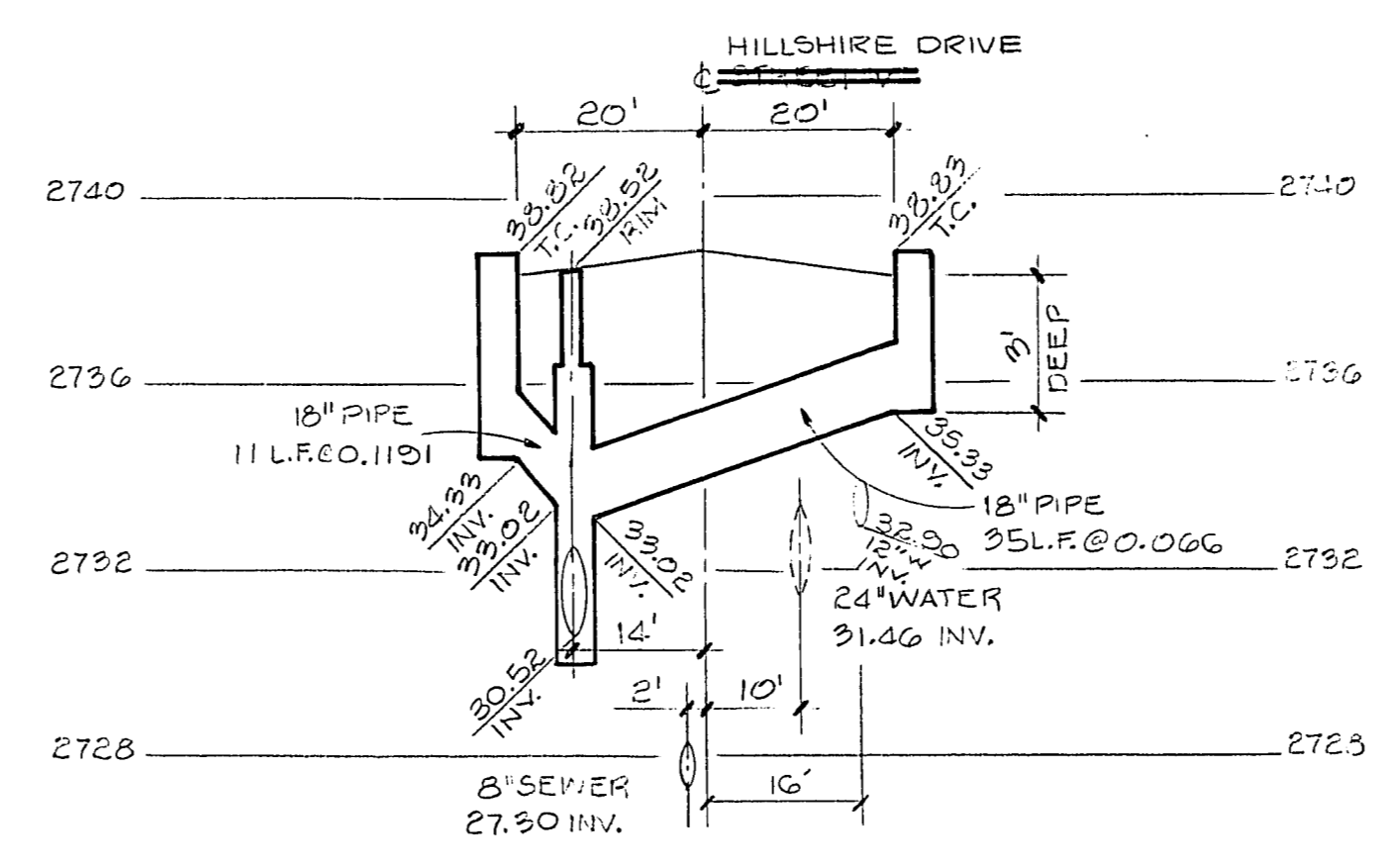
10 33+74.17; 20'LT. D.I.#-12L



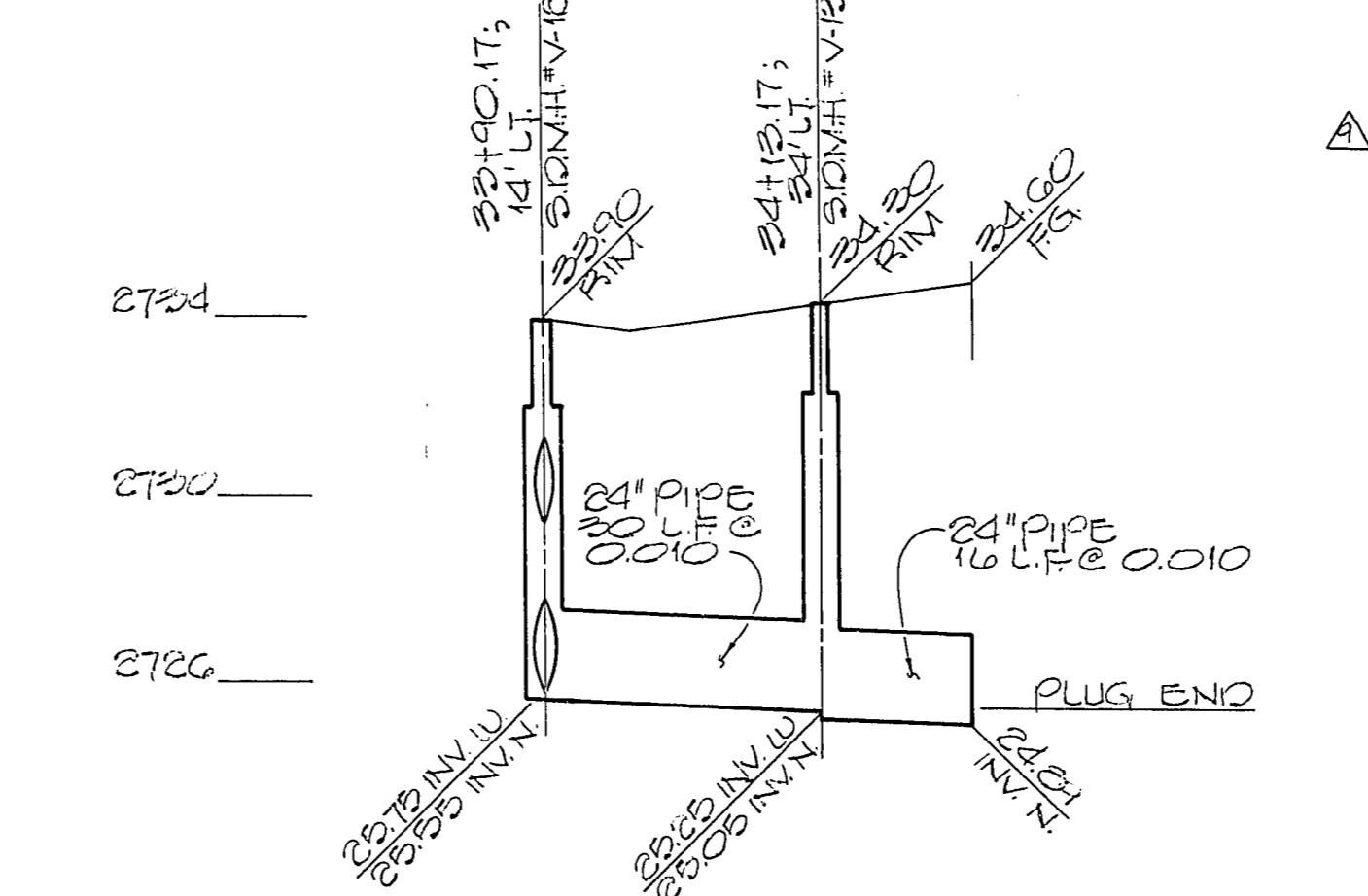
9 33+12.95; 20'RT. D.I.#V-12R



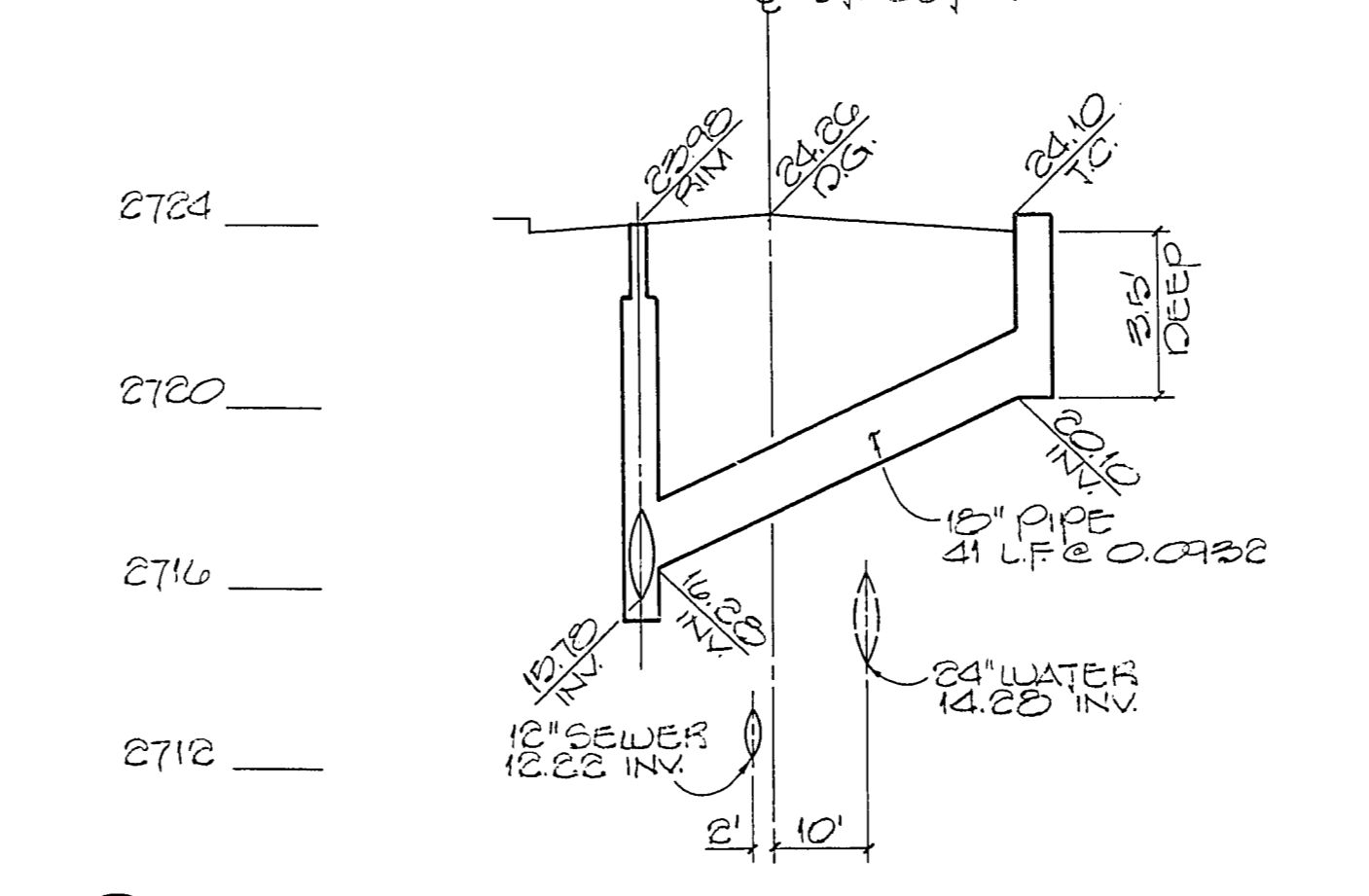
8 30+20.00; 20' LT. & RT. D.I.#V-10L&V-10R



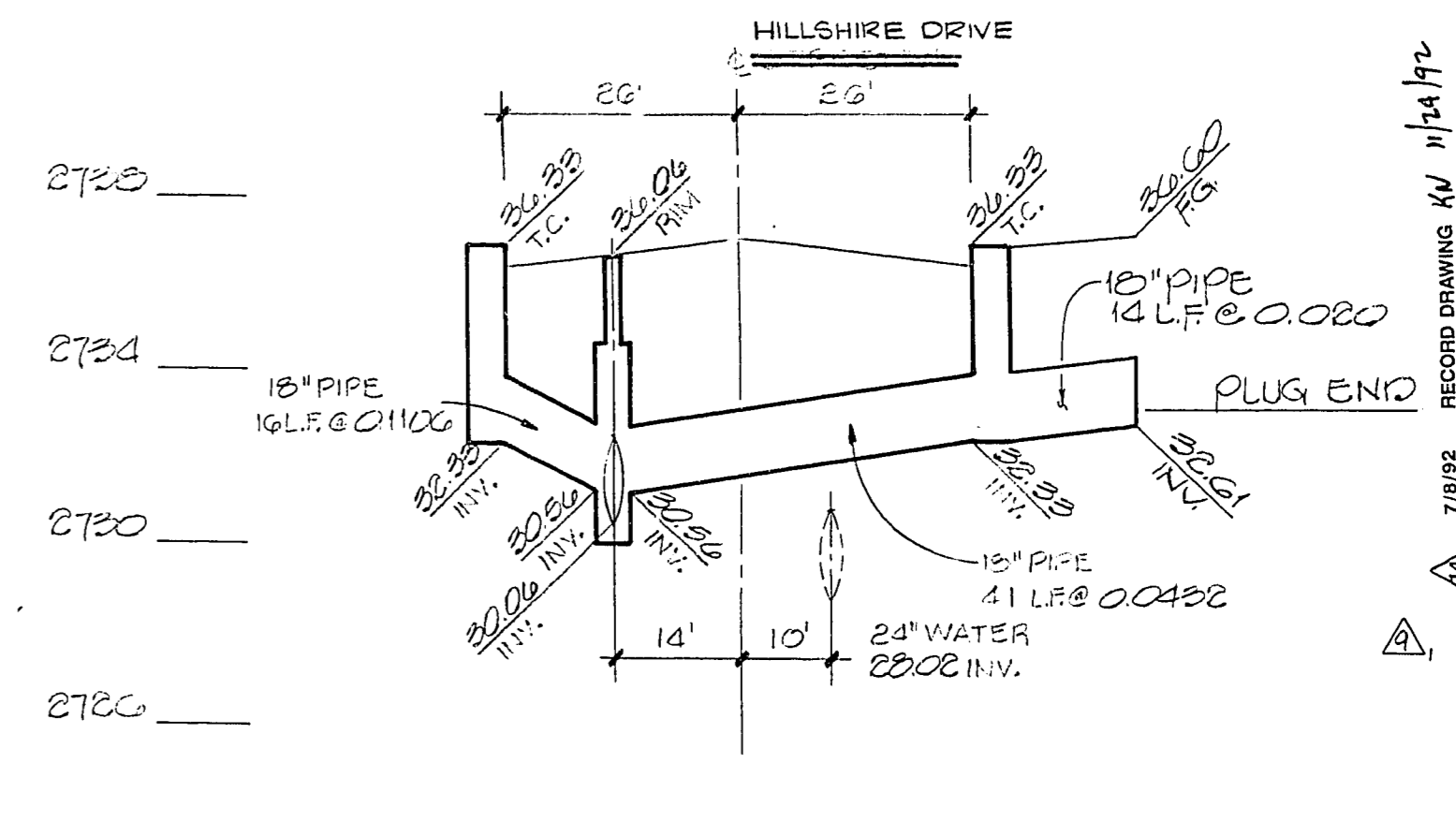
7 24+29.94; 20' LT. D.I.#V-8L& 24+28.62; 20' RT. D.I.#V-8R



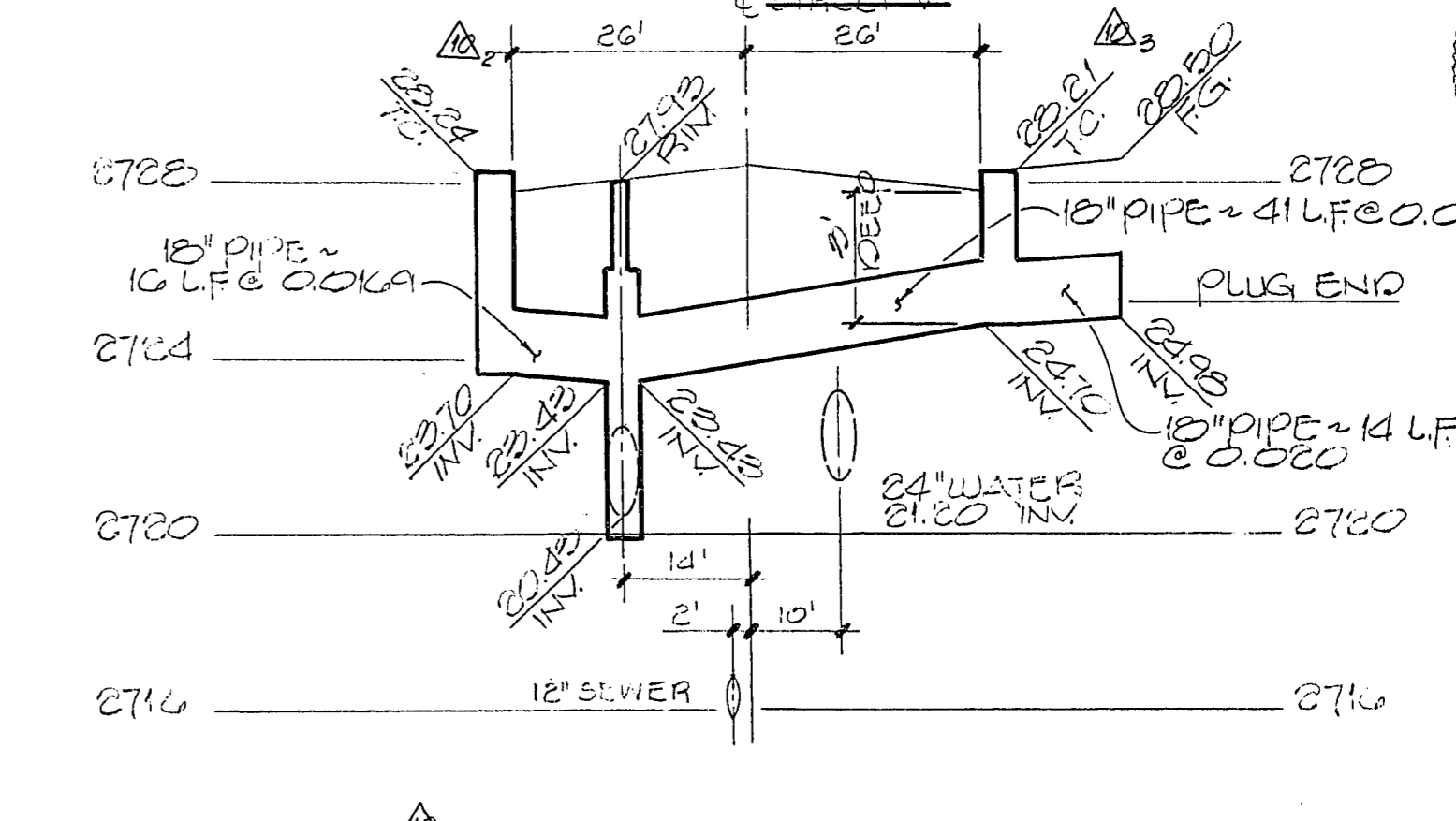
6 33+90.17; 14'LT. TO 34+13.17; 50'LT. 24" STORM DRAIN



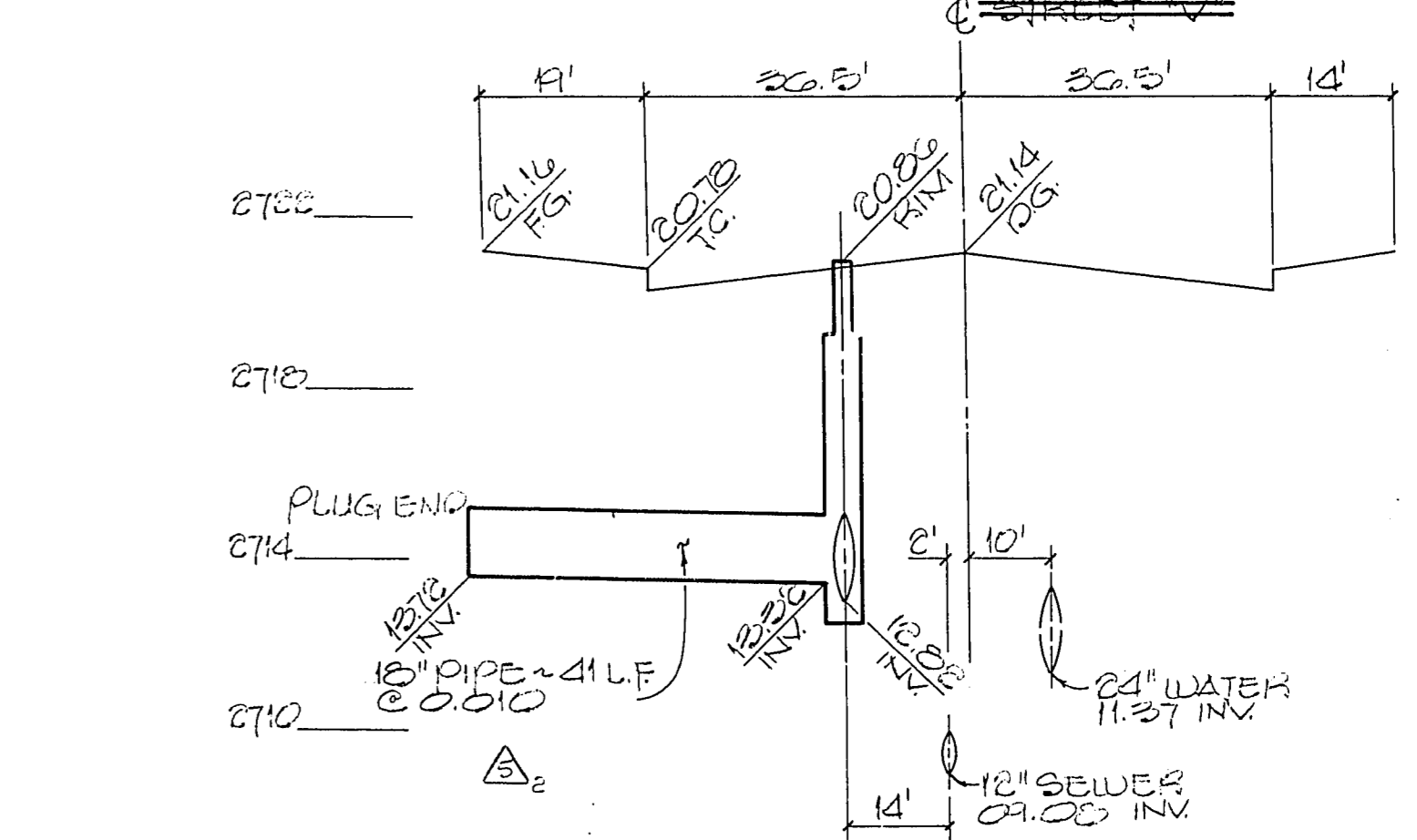
5 3+90.50; 14'LT. TO 26.6'RT. D.I.#V-2AR



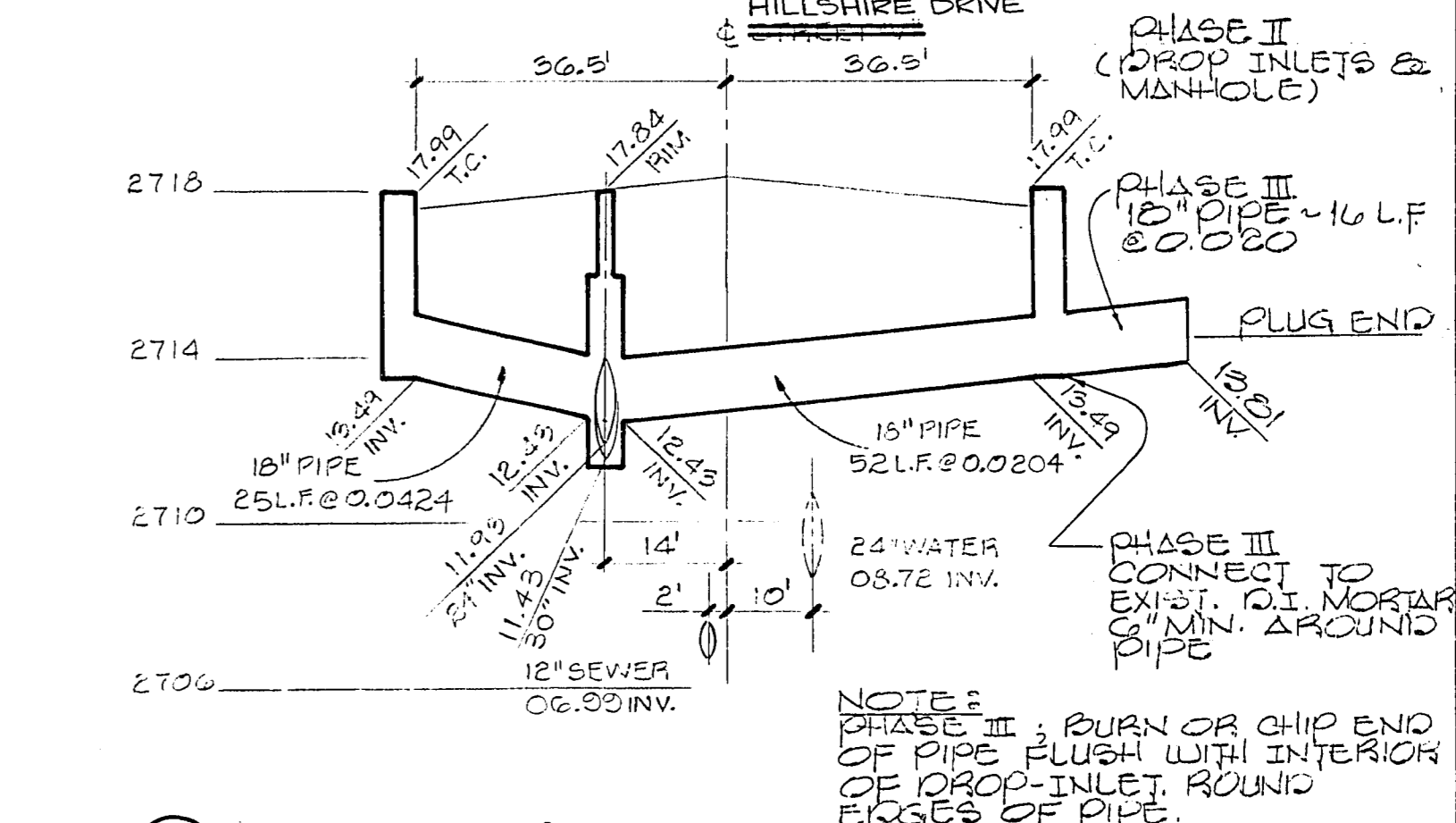
4 12+68.47; 26'LT. & RT. D.I.#V-5L&V-5R



3 6+86 ±; 26' LT. & RT. D.I.#V-3L&V-3R



2 2+08.81; 14'LT. TO 55.5'LT. 18" LATERAL #V-2



1 0+7.52; 36.5' LT. & RT. D.I.#V-1L & V-1R & LATERAL #V-1R

REV	DATE	DESCRIPTION
1	12/11/91	REVISION
2	12/11/91	REVISION
3	12/11/91	REVISION
4	12/11/91	REVISION
5	12/11/91	REVISION
6	12/11/91	REVISION
7	12/11/91	REVISION
8	12/11/91	REVISION
9	12/11/91	REVISION
10	12/11/91	REVISION
11	12/11/91	REVISION
12	12/11/91	REVISION

RECOMMENDED BY: [Signature]

DATE: 12/11/91

1555 SOUTH RAINBOW BLVD. LAS VEGAS, NEVADA 89102

G.C. WALLACE, INC.
Engineering/Architecture

HOWARD HUGHES PROPERTIES
SUMMERLIN VILLAGE 1 SOUTH

STORM DRAIN DETAILS

SHEET
I-13
SHT. 16 OF 44

JOB NO. 620.3148

8/84 DIETRICH POST 65328

23-335 107-V1815