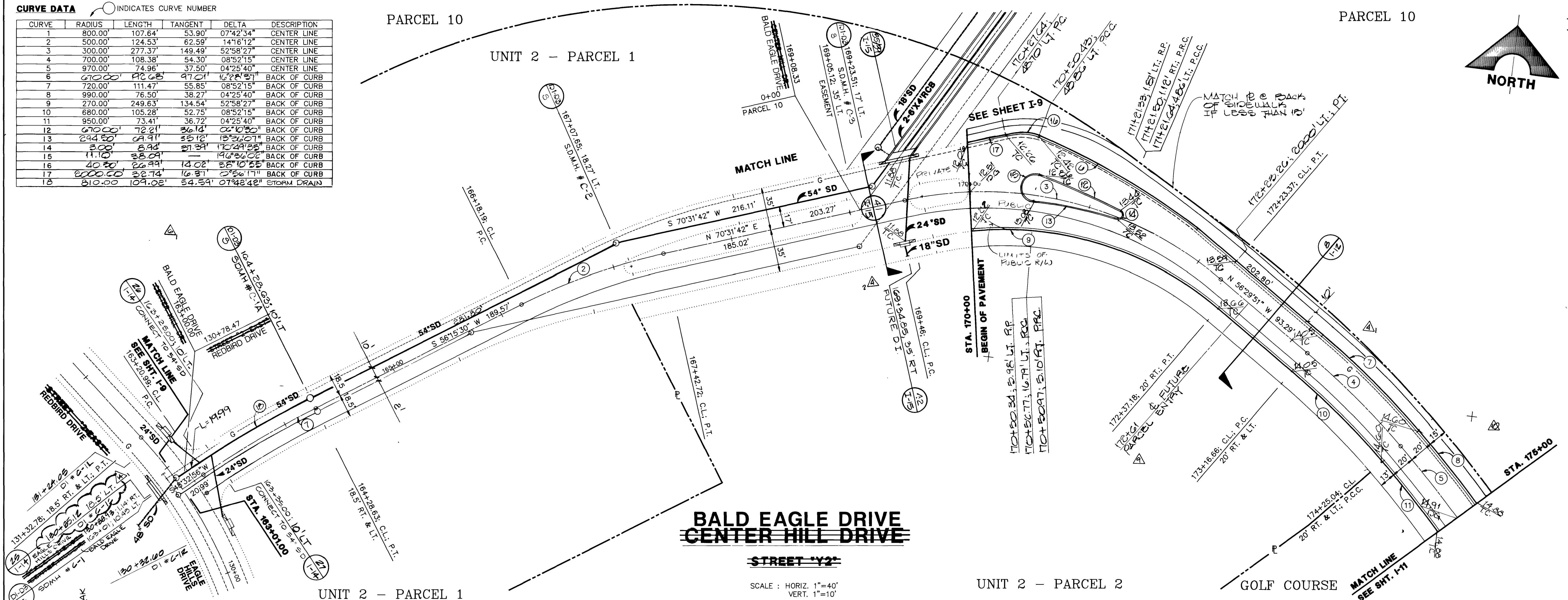


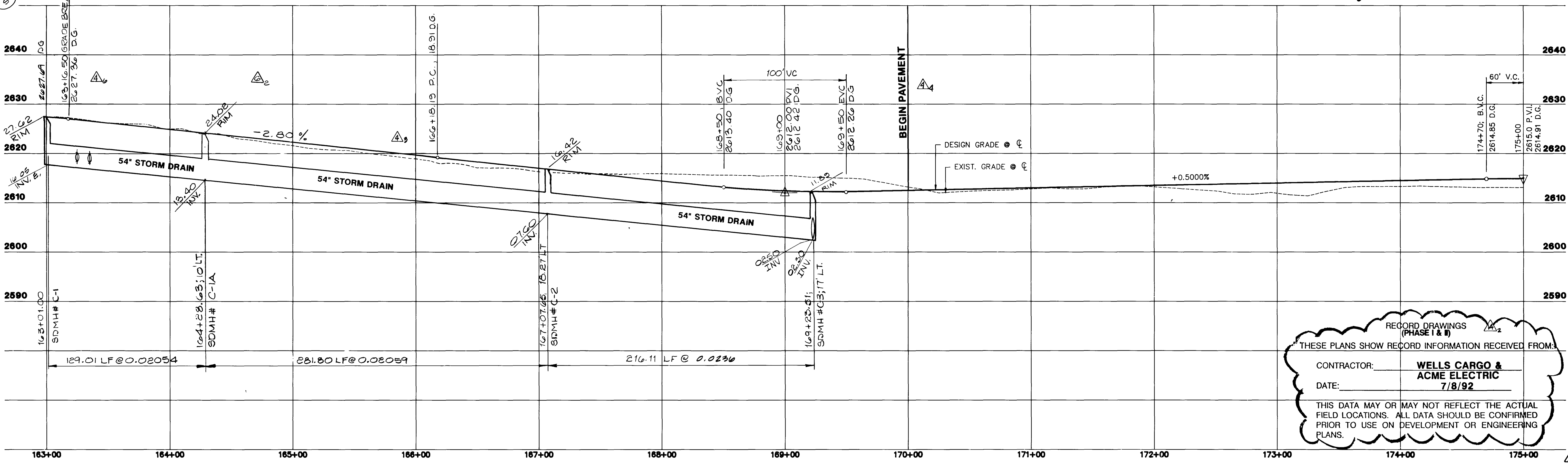
**CURVE DATA** INDICATES CURVE NUMBER

CURVE	RADIUS	LENGTH	TANGENT	DELTA	DESCRIPTION
1	800.00'	107.64'	53.90'	07°42'34"	CENTER LINE
2	500.00'	124.53'	62.59'	14°16'12"	CENTER LINE
3	300.00'	277.37'	149.49'	52°58'27"	CENTER LINE
4	700.00'	108.38'	54.30'	08°52'15"	CENTER LINE
5	970.00'	74.96'	37.50'	04°25'40"	CENTER LINE
6	670.00'	142.65'	71.21'	16°28'51"	BACK OF CURB
7	720.00'	111.47'	55.85'	08°52'15"	BACK OF CURB
8	990.00'	76.50'	38.27'	04°25'40"	BACK OF CURB
9	270.00'	249.63'	134.54'	52°58'27"	BACK OF CURB
10	680.00'	105.28'	52.75'	08°52'15"	BACK OF CURB
11	950.00'	73.41'	36.72'	04°25'40"	BACK OF CURB
12	670.00'	142.65'	71.21'	16°28'51"	BACK OF CURB
13	244.50'	49.91'	25.12'	18°32'07"	BACK OF CURB
14	300'	8.94'	4.51'	16°24'22"	BACK OF CURB
15	40.00'	28.94'	14.02'	19°23'40"	BACK OF CURB
16	200.00'	28.74'	14.02'	19°23'40"	BACK OF CURB
17	200.00'	28.74'	14.02'	19°23'40"	BACK OF CURB
18	810.00'	109.02'	54.51'	07°42'42"	STORM DRAIN



**BALD EAGLE DRIVE  
CENTER HILL DRIVE**

SCALE: HORIZ. 1"=40'  
VERT. 1"=10'



RECORD DRAWINGS (PHASE I & II)  
THESE PLANS SHOW RECORD INFORMATION RECEIVED FROM:  
CONTRACTOR: **WELLS CARGO & ACME ELECTRIC**  
DATE: **7/8/92**  
THIS DATA MAY OR MAY NOT REFLECT THE ACTUAL FIELD LOCATIONS. ALL DATA SHOULD BE CONFIRMED PRIOR TO USE ON DEVELOPMENT OR ENGINEERING PLANS.

JOB NO. 620.3145

REVISION	DATE	DESCRIPTION
1	7/8/92	RECORD DRAWINGS (PHASE I & II)
2	7/8/92	REVISION
3	7/8/92	REVISION
4	7/8/92	REVISION
5	7/8/92	REVISION
6	7/8/92	REVISION
7	7/8/92	REVISION
8	7/8/92	REVISION
9	7/8/92	REVISION
10	7/8/92	REVISION
11	7/8/92	REVISION
12	7/8/92	REVISION
13	7/8/92	REVISION
14	7/8/92	REVISION
15	7/8/92	REVISION
16	7/8/92	REVISION
17	7/8/92	REVISION
18	7/8/92	REVISION
19	7/8/92	REVISION
20	7/8/92	REVISION
21	7/8/92	REVISION
22	7/8/92	REVISION
23	7/8/92	REVISION
24	7/8/92	REVISION
25	7/8/92	REVISION
26	7/8/92	REVISION
27	7/8/92	REVISION
28	7/8/92	REVISION
29	7/8/92	REVISION
30	7/8/92	REVISION
31	7/8/92	REVISION
32	7/8/92	REVISION
33	7/8/92	REVISION
34	7/8/92	REVISION
35	7/8/92	REVISION
36	7/8/92	REVISION
37	7/8/92	REVISION
38	7/8/92	REVISION
39	7/8/92	REVISION
40	7/8/92	REVISION
41	7/8/92	REVISION
42	7/8/92	REVISION
43	7/8/92	REVISION
44	7/8/92	REVISION
45	7/8/92	REVISION
46	7/8/92	REVISION
47	7/8/92	REVISION
48	7/8/92	REVISION
49	7/8/92	REVISION
50	7/8/92	REVISION
51	7/8/92	REVISION
52	7/8/92	REVISION
53	7/8/92	REVISION
54	7/8/92	REVISION
55	7/8/92	REVISION
56	7/8/92	REVISION
57	7/8/92	REVISION
58	7/8/92	REVISION
59	7/8/92	REVISION
60	7/8/92	REVISION
61	7/8/92	REVISION
62	7/8/92	REVISION
63	7/8/92	REVISION
64	7/8/92	REVISION
65	7/8/92	REVISION
66	7/8/92	REVISION
67	7/8/92	REVISION
68	7/8/92	REVISION
69	7/8/92	REVISION
70	7/8/92	REVISION
71	7/8/92	REVISION
72	7/8/92	REVISION
73	7/8/92	REVISION
74	7/8/92	REVISION
75	7/8/92	REVISION
76	7/8/92	REVISION
77	7/8/92	REVISION
78	7/8/92	REVISION
79	7/8/92	REVISION
80	7/8/92	REVISION
81	7/8/92	REVISION
82	7/8/92	REVISION
83	7/8/92	REVISION
84	7/8/92	REVISION
85	7/8/92	REVISION
86	7/8/92	REVISION
87	7/8/92	REVISION
88	7/8/92	REVISION
89	7/8/92	REVISION
90	7/8/92	REVISION
91	7/8/92	REVISION
92	7/8/92	REVISION
93	7/8/92	REVISION
94	7/8/92	REVISION
95	7/8/92	REVISION
96	7/8/92	REVISION
97	7/8/92	REVISION
98	7/8/92	REVISION
99	7/8/92	REVISION
100	7/8/92	REVISION

RECOMMENDED BY: [Signature]  
DATE: 7/8/92

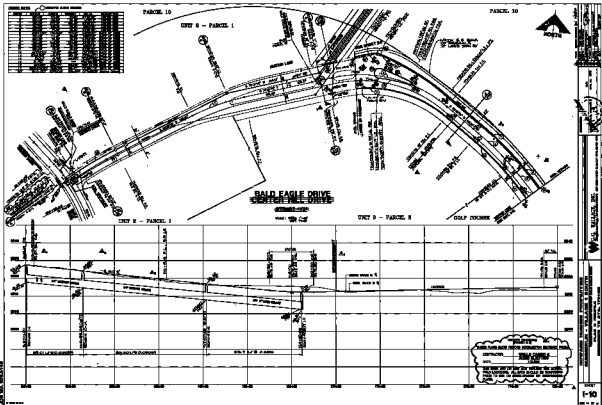
G.C. WALLACE, INC.  
Engineering/Architecture  
1555 SOUTH HANCOCK BLVD., LAS VEGAS, NEVADA 89102

HOWARD HUGHES PROPERTIES  
SUMMERLIN - VILLAGE 1 SOUTH  
CENTER HILL DRIVE - BALD EAGLE DRIVE  
PLAN & PROFILE  
BEGINNING TO STA. 175+00

SHEET  
**I-10**  
SHT 13 OF 44

1997

23-335 107-11815



YAC

11-1-82 01-KWV