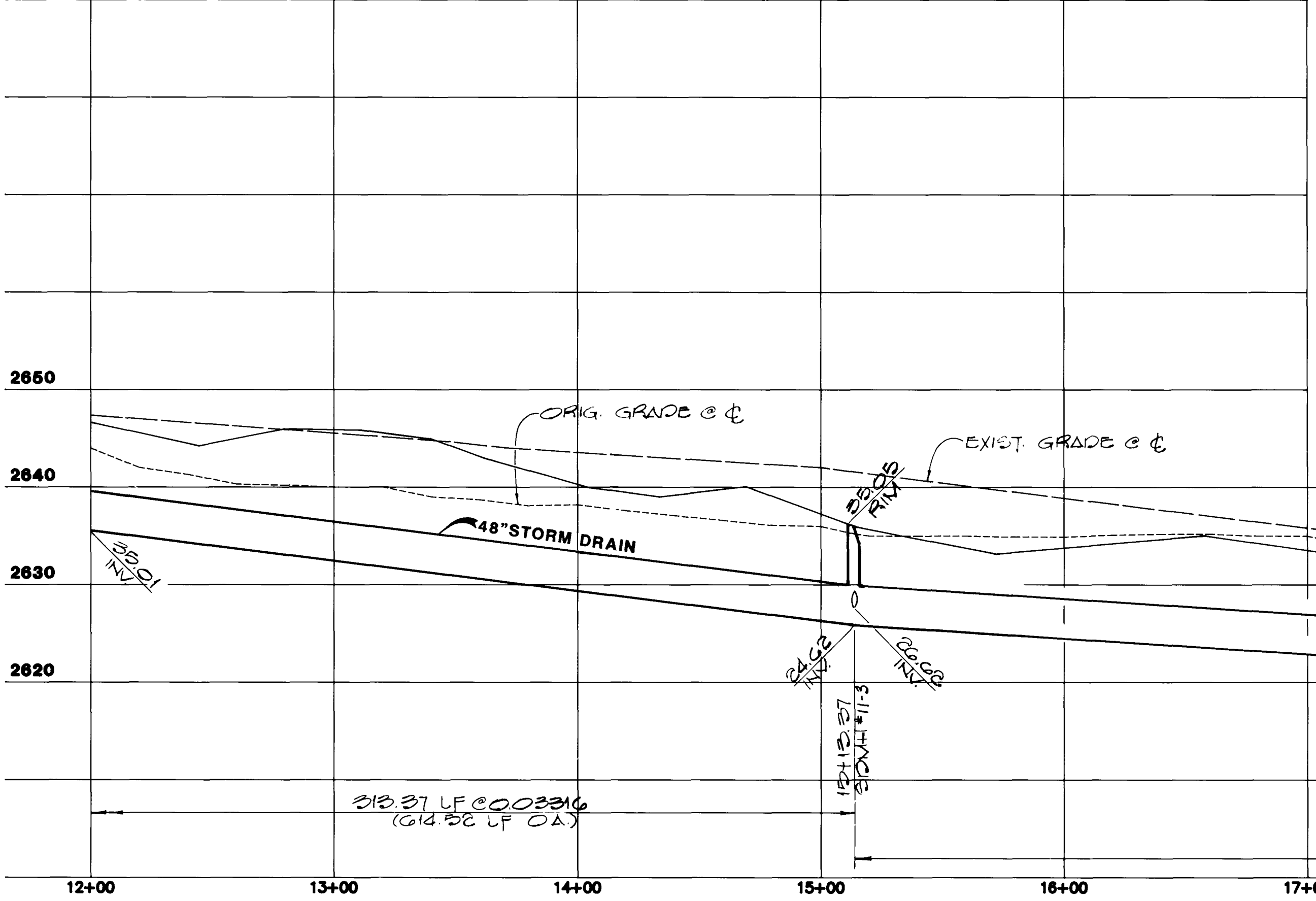


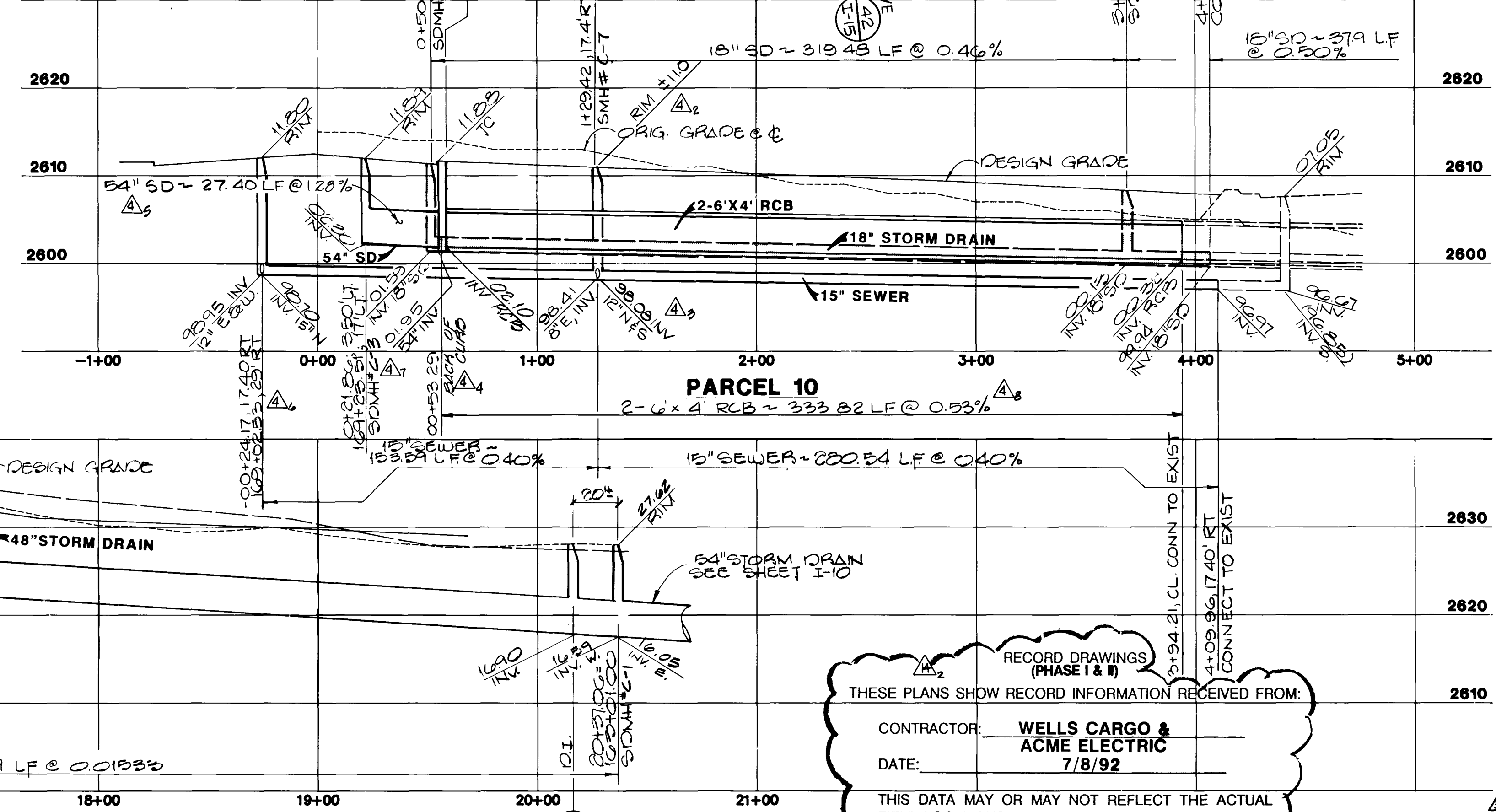
UNIT 2 - PARCEL 1

STORM DRAIN IN OPEN SPACE

SCALE: HORIZ. 1"=40'
VERT. 1"=10'



STORM DRAIN IN OPEN SPACE



RECORD DRAWINGS (PHASE I & II)
THESE PLANS SHOW RECORD INFORMATION RECEIVED FROM:
CONTRACTOR: **WELLS CARGO & ACME ELECTRIC**
DATE: **7/8/92**
THIS DATA MAY OR MAY NOT REFLECT THE ACTUAL FIELD LOCATIONS. ALL DATA SHOULD BE CONFIRMED PRIOR TO USE ON DEVELOPMENT OR ENGINEERING PLANS.

NO.	REVISION	DATE	DESCRIPTION
1	REVISION	7/8/92	REVISED
2	REVISION	7/8/92	REVISED
3	REVISION	7/8/92	REVISED

STATE OF NEVADA
REGISTERED PROFESSIONAL ENGINEER
CHRISTOPHER W. ANDERSON
No. 4571
Exp. 12/31/95

RECOMMENDED
100%
G. C. WALLACE, INC.
Engineering/Architecture
1555 SOUTH RAINBOW BLVD./LAS VEGAS, NEVADA 89108

G. C. WALLACE, INC.
Engineering/Architecture

HOWARD HUGHES PROPERTIES
SUMMERLIN - VILLAGE 1 SOUTH
STORM DRAIN IN OPEN SPACE, 12+00 TO END & EASEMENT IN PARCEL 10
PLAN & PROFILE

SHEET
1-9
SHT 12 OF 44

JOB NO. 620-314S

07 13209 02-08-91

148

237.31

107-11815

