

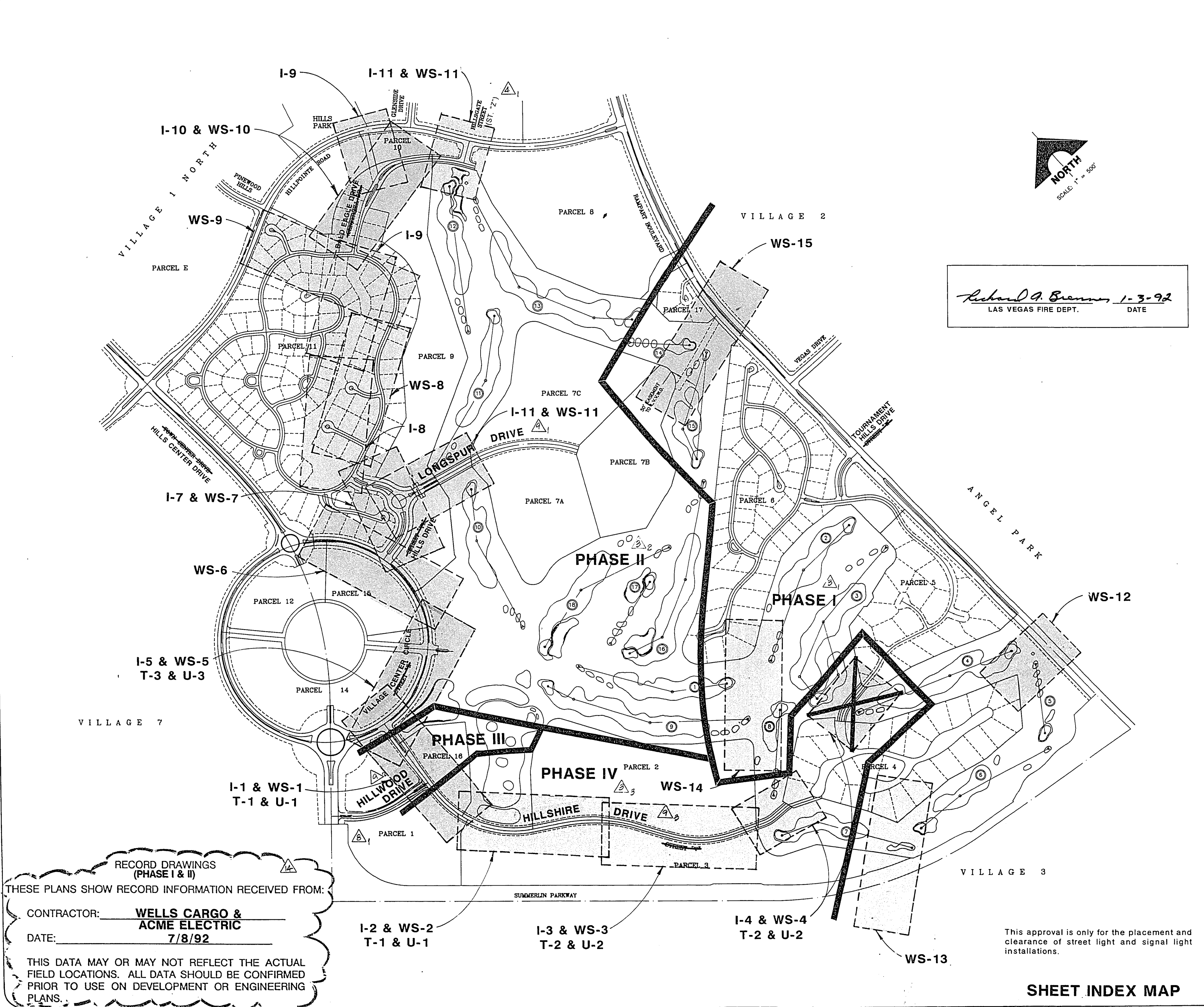
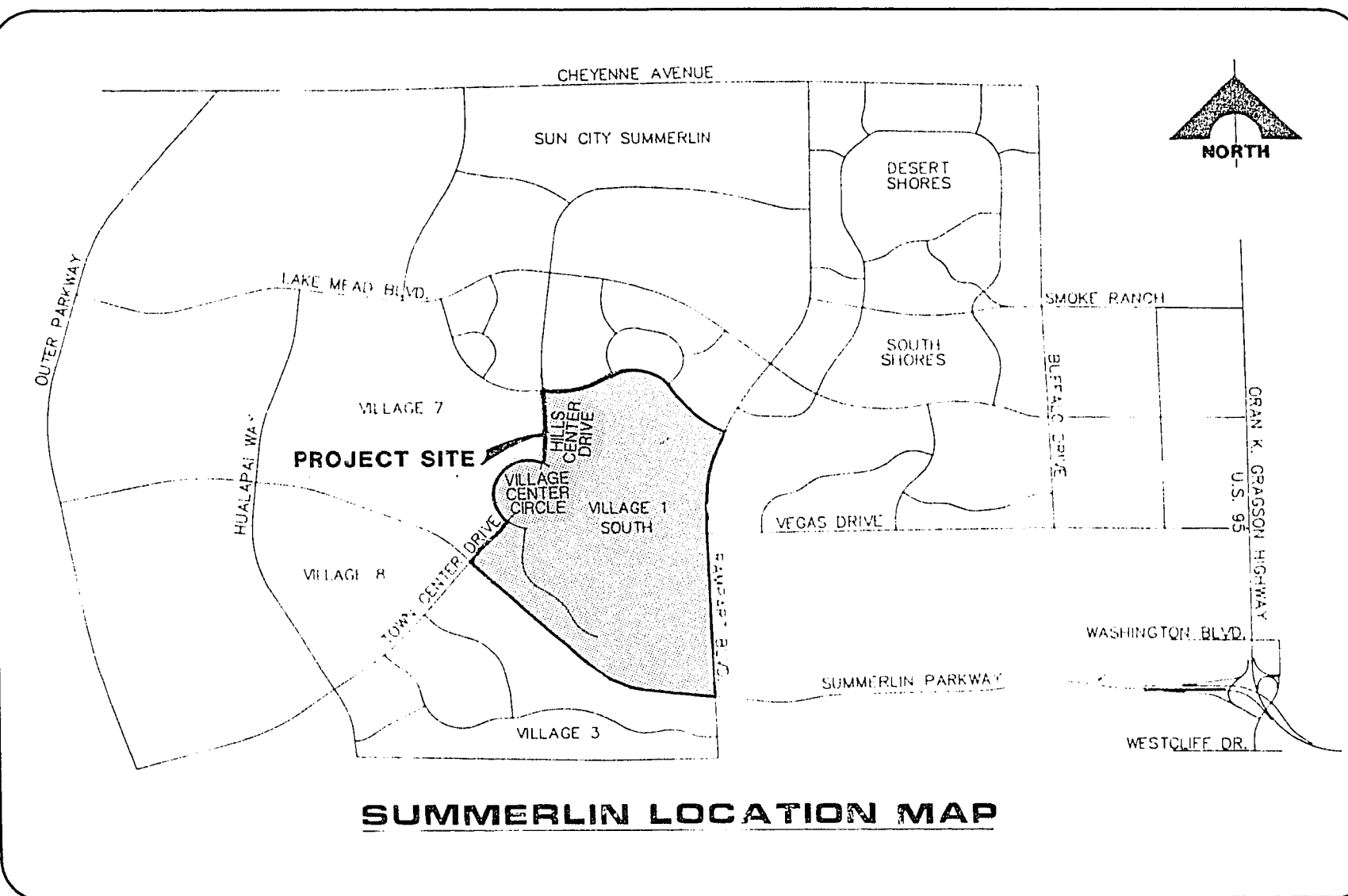
GENERAL NOTES

- ALL CONSTRUCTION, MATERIALS AND DETAILS FOR THIS PROJECT SHALL BE IN ACCORDANCE WITH THE CONTRACT DOCUMENTS, DRAWINGS, SUMMERLIN IMPROVEMENT STANDARDS, AND THE UNIFORM STANDARD SPECIFICATIONS FOR PUBLIC WORKS' CONSTRUCTION, OFFSITE IMPROVEMENTS, CLARK COUNTY AREA, NEVADA, 1986.
- 48 HOURS PRIOR TO THE START OF CONSTRUCTION, THE CONTRACTOR SHALL CONTACT:
 - LAS VEGAS VALLEY WATER DISTRICT PHONE 870-2011
 - NEVADA POWER COMPANY PHONE 1-800-227-2600
 - CENTRAL TELEPHONE COMPANY PHONE 1-800-227-2600
 - SOUTHWEST GAS CORPORATION PHONE 365-2296
- LOCATIONS OF UNDERGROUND UTILITIES SHOWN ON THE DRAWINGS WERE OBTAINED FROM INFORMATION RECEIVED FROM THE APPLICABLE UTILITY COMPANIES. NEITHER THE OWNER NOR ENGINEER ASSUMES ANY RESPONSIBILITY FOR EXISTING UTILITIES OR STRUCTURES NOT SHOWN, OR NOT IN THE LOCATIONS SHOWN ON THE DRAWINGS. CONTRACTOR TO VERIFY THE EXACT LOCATION OF UTILITIES PRIOR TO START OF CONSTRUCTION. THE CONTRACTOR'S RESPONSIBILITY REGARDING UTILITIES SHALL BE AS REQUIRED UNDER SECTION 107.17 OF THE UNIFORM STANDARD SPECIFICATIONS FOR CLARK COUNTY AREA, NEVADA AND AS PROVIDED IN THE SPECIFICATIONS, THE CONTRACTOR SHALL USE EXTREME CAUTION WHEN WORKING OVER OR NEAR THE EXISTING GAS MAINS.
- THE CONTRACTOR SHALL TAKE ALL PRECAUTIONARY MEASURES NECESSARY TO PROTECT EXISTING IMPROVEMENTS, WHICH ARE TO REMAIN IN PLACE, FROM DAMAGE AND ALL SUCH IMPROVEMENTS OR STRUCTURES DAMAGED BY THE CONTRACTOR'S OPERATIONS SHALL BE REPAIRED OR RECONSTRUCTED SATISFACTORY TO THE ENGINEER AT THE EXPENSE OF THE CONTRACTOR.
- THE CONTRACTOR SHALL NOT REMOVE TREES, SHRUBS, LAWNS, WALLS, FENCES, SIGNS, STRUCTURES, LIGHTS, OR ANY EXISTING IMPROVEMENTS OUTSIDE OF STREET RIGHT-OF-WAY, EXCEPT WHERE REQUIRED TO DO SO BY THE CONTRACT DRAWINGS OR BY THE ENGINEER.
- TREES, SHRUBS, LAWNS, WALLS, FENCES, SIGNS, STRUCTURES, LIGHTS AND OTHER EXISTING IMPROVEMENTS WITHIN STREET RIGHTS-OF-WAY SHALL BE REMOVED WHERE SHOWN ON THE CONTRACT DRAWINGS, AND AS REQUIRED BY THE ENGINEER.
- REPLACEMENT, RELOCATION OR RECONSTRUCTION OF ALL EXISTING IMPROVEMENTS INCLUDING SPRINKLER SYSTEMS, LAWNS, FENCES, WALLS, SIGNS, STEPS, SIDEWALKS, DRIVENAYS, LAWN LIGHTS, AND ALL OTHER ITEMS APPLICABLE TO THIS CONTRACT SHALL BE AS REQUIRED BY THE ENGINEER.
- THE CONTRACTOR SHALL BACKFILL AND FINE GRADE ALL CUT OR FILL SLOPES TO MATCH EXISTING CONDITIONS TO THE SATISFACTION OF THE ENGINEER. WHERE EXISTING LAWNS ARE DAMAGED BY THE CONTRACTOR'S OPERATIONS, THE CONTRACTOR SHALL RE-SEED AND/OR SOD THE AFFECTED AREA TO A CONDITION EQUAL TO OR BETTER THAN EXISTED PRIOR TO CONSTRUCTION.
- ALL BARRICADING AND TEMPORARY TRAFFIC CONTROL DEVICES OR METHODS USED DURING CONSTRUCTION SHALL BE IN ACCORDANCE WITH THE "NEVADA TRAFFIC CONTROL MANUAL," 1985, PUBLISHED BY THE STATE OF NEVADA, DEPARTMENT OF HIGHWAYS, EXCEPT AS OTHERWISE PROVIDED IN THE CONTRACT SPECIFICATIONS OR AS REQUIRED BY THE ENGINEER.
- AT THE TIME OF PRE-CONSTRUCTION CONFERENCE, THE CONTRACTOR SHALL FURNISH, FOR APPROVAL, A TRAFFIC BARRICADING PLAN AND THE METHOD OF MAINTAINING PUBLIC CONVEYANCE AND SAFETY THROUGHOUT THE CONSTRUCTION AREA. TRAFFIC BARRICADING PLANS SHALL COMPLY WITH APPLICABLE PORTIONS OF SECTIONS 624 AND 625 OF THE STANDARD SPECIFICATIONS. THE TRAFFIC CONTROL MANUAL AND APPLICABLE CITY ORDINANCES.
- THE CONTRACTOR SHALL NOT BE RESPONSIBLE FOR THE VERTICAL ADJUSTMENT OF EXISTING SANITARY, WATER AND STORM SEWER MANHOLES TO THE FINAL FINISH GRADES EXCEPT AS NOTED ON THE CONTRACT DRAWINGS, AND IN ACCORDANCE WITH SECTION 609 OF THE "STANDARD SPECIFICATIONS," AND ANY VERTICAL ADJUSTMENTS OF WATER VALVE BOXES AND OTHER APPURTENANCES SHALL BE IN ACCORDANCE WITH THE DETAILS SHOWN ON THE CONTRACT DRAWINGS.
- REFERENCE IS MADE TO THE "SUMMERLIN IMPROVEMENT STANDARDS" FOR CONSTRUCTION DETAILS. STANDARDS AVAILABLE FROM OWNER.
- NOTICE: GRADING AUTHORIZED ONLY AFTER PERMITTEE'S FULL COMPLIANCE WITH FEDERAL ENDANGERED SPECIES ACT.
- THE PROJECT IS TO BE CONSTRUCTED IN 3 PHASES (PHASE I AND PHASE II & III) SO THAT EACH PHASE MAY BE APPROVED WITH A LETTER OF ACCEPTANCE FOR EACH PHASE BY THE APPROPRIATE AGENCIES.
- ALL FUTURE PARCEL ENTRY ROADS ARE SHOWN FOR REFERENCE AND INTENDED DEVELOPMENT ONLY. FINAL LOCATIONS TO BE ESTABLISHED BY PARCEL DEVELOPMENT SUBMITTALS AND APPROVALS THROUGH SUMMERLIN AND CL.V.

LEGEND & ABBREVIATIONS

1	DETAIL DRAWING NUMBER	UTILITIES	
1	DRAWING NUMBER FOR DETAIL DRAWN ON SAME SHEET	14" WATERLINE	
1	DRAWING NUMBER FOR DETAIL WITH REFERENCE TO THE SHEET IT IS DRAWN ON	W	WATER LINE
WS-7	DRAWING NUMBER FOR DETAIL PER SUMMERLIN IMPROVEMENTS STANDARDS	S	SEWER LINE
D1.D2	DRAWING NUMBER FOR DETAIL PER SUMMERLIN IMPROVEMENTS STANDARDS	G	GAS LINE
S	INDICATES CONSTRUCTION NOTE	T	TELEPHONE LINE
I	INDICATES REMOVAL NOTE	E	ELECTRICAL LINE
A	INDICATES REMOVAL NOTE	SD	STORM DRAIN
EMBANKMENT		DG	DESIGNED GRADE
TOP	PROPOSED	FG	FINISHED GRADE
BOT	BY SEPARATE CONTRACT	RG	ROUGH GRADE
	EXISTING	TC	TOP OF CURB

LEGEND & ABBREVIATIONS SPECIFIED IN THE "SUMMERLIN IMPROVEMENT STANDARDS"-AUGUST 1988 WILL BE UTILIZED FOR ANY LEGEND & ABBREVIATIONS REQUIRED WHICH ARE NOT SHOWN.



INDEX OF DRAWINGS

1	COVER SHEET
2	PROJECT DATA SHEET
IMPROVEMENTS STORM DRAIN	
I-0	STORM DRAIN MAP
I-1	STREET "A" BEG TO 10+00
I-2	STREET "A" 10+00 TO 22+00
I-3	STREET "A" 22+00 TO 34+00
I-4	STREET "A" 34+00 TO END
I-5	STREET "A" 28+00 TO 14+00
I-6	STREET "A" 14+00 TO BEG
I-7	STREET "A" BEG TO 305+00
I-8	STREET "A" 305+00 TO 317+00
I-9	STREET "A" 317+00 TO 329+00
I-10	STREET "A" 329+00 TO END
I-11	STREET "Z" STREET "W"
I-12	STREET SECTIONS
I-13	STORM DRAIN SECTIONS
I-14	STORM DRAIN SECTIONS
I-15	STORM DRAIN SECTIONS
WATER AND SEWER	
W-0	WATER MAP
W-1	SEWER MAP
WS-1	STREET "A" BEG TO 10+00
WS-2	STREET "A" 10+00 TO 22+00
WS-3	STREET "A" 22+00 TO 34+00
WS-4	STREET "A" 34+00 TO END
WS-5	STREET "A" 25+00 TO 14+00
WS-6	STREET "A" 14+00 TO BEG
WS-7	STREET "A" BEG TO 305+00
WS-8	STREET "A" 305+00 TO 317+00
WS-9	STREET "A" 317+00 TO 329+00
WS-10	STREET "A" 329+00 TO END
WS-11	STREET "Z" STREET "W" & PARCEL 10
WS-12	RAMPART TO PARCEL 4
WS-13	PARCEL 4 TO PARCEL 3
WS-14	PARCEL 6 TO PARCEL 2
WS-15	RAMPART TO PARCEL 7
WS-16	DETAILS
WS-17	METER DETAILS
STREET LIGHTS STRIPING AND SIGNS	
T-0	STREET LIGHTS MAP
T-1	STREET "A" BEG TO 22+00
T-2	STREET "A" 22+00 TO END
T-3	STREET "A"
T-4	STREET "A" BEG TO 317+00
T-5	STREET "A" 317+00 TO END & STREET "Z"
T-6	PANEL SCHEDULE, DETAILS & NOTES

APPROVALS CITY OF LAS VEGAS RESUBMITTAL APPROVAL

CITY ENGINEER: *[Signature]* DATE: 6-16-91

GARY A. PRESSWOOD CITY ENGINEER DATE: 7-10-90

APPROVAL FOR "I" AND "WS" DRAWINGS ONLY.

AGENCY	REVIEWED BY	DATE
NEVADA POWER CO.	<i>[Signature]</i>	7-2-90
SOUTHWEST GAS CORP.	<i>[Signature]</i>	7-6-90
CENTRAL TELEPHONE CO.	<i>[Signature]</i>	7-7-90
L.V. VALLEY WATER DIST.	<i>[Signature]</i>	6-29-90

BASIS OF BEARING

N 01°12'43" E. IS BASED ON THE NEVADA STATE GRID SYSTEM (EAST ZONE) AS DETERMINED FROM THE TRIANGULATION POINTS "RED ROCK" TO "LONE MOUNTAIN."

BENCHMARK

CHISELED IN TOP OF CURB AT END OF CURB ON WEST SIDE OF DURANGO, 250' SOUTH OF WESTCLIFF. ELEV. PER CITY OF LAS VEGAS DATUM = 2610.16

Call before you Dig.

1-800-227-2600

RECOMMENDED

REVISION 1: 10/21/92

REVISION 2: 11/14/92

REVISION 3: 12/11/92

REVISION 4: 1/15/93

REVISION 5: 2/19/93

REVISION 6: 3/19/93

REVISION 7: 4/16/93

REVISION 8: 5/14/93

REVISION 9: 6/11/93

REVISION 10: 7/9/93

REVISION 11: 8/6/93

REVISION 12: 9/3/93

REVISION 13: 10/1/93

REVISION 14: 10/29/93

REVISION 15: 11/26/93

REVISION 16: 12/24/93

REVISION 17: 1/21/94

REVISION 18: 2/18/94

REVISION 19: 3/15/94

REVISION 20: 4/12/94

REVISION 21: 5/10/94

REVISION 22: 6/7/94

REVISION 23: 7/5/94

REVISION 24: 8/2/94

REVISION 25: 8/30/94

REVISION 26: 9/27/94

REVISION 27: 10/25/94

REVISION 28: 11/22/94

REVISION 29: 12/20/94

REVISION 30: 1/18/95

REVISION 31: 2/15/95

REVISION 32: 3/12/95

REVISION 33: 4/9/95

REVISION 34: 5/7/95

REVISION 35: 6/4/95

REVISION 36: 7/2/95

REVISION 37: 7/29/95

REVISION 38: 8/26/95

REVISION 39: 9/23/95

REVISION 40: 10/21/95

REVISION 41: 11/18/95

REVISION 42: 12/16/95

REVISION 43: 1/13/96

REVISION 44: 2/10/96

REVISION 45: 3/9/96

REVISION 46: 4/6/96

REVISION 47: 5/4/96

REVISION 48: 6/1/96

REVISION 49: 6/29/96

REVISION 50: 7/27/96

REVISION 51: 8/24/96

REVISION 52: 9/21/96

REVISION 53: 10/19/96

REVISION 54: 11/16/96

REVISION 55: 12/14/96

REVISION 56: 1/11/97

REVISION 57: 2/8/97

REVISION 58: 3/7/97

REVISION 59: 4/4/97

REVISION 60: 5/2/97

REVISION 61: 5/31/97

REVISION 62: 6/28/97

REVISION 63: 7/26/97

REVISION 64: 8/23/97

REVISION 65: 9/20/97

REVISION 66: 10/18/97

REVISION 67: 11/15/97

REVISION 68: 12/13/97

REVISION 69: 1/10/98

REVISION 70: 1/7/98

REVISION 71: 1/4/98

REVISION 72: 1/1/98

REVISION 73: 12/29/97

REVISION 74: 12/26/97

REVISION 75: 12/23/97

REVISION 76: 12/20/97

REVISION 77: 12/17/97

REVISION 78: 12/14/97

REVISION 79: 12/11/97

REVISION 80: 12/8/97

REVISION 81: 12/5/97

REVISION 82: 12/2/97

REVISION 83: 11/29/97

REVISION 84: 11/26/97

REVISION 85: 11/23/97

REVISION 86: 11/20/97

REVISION 87: 11/17/97

REVISION 88: 11/14/97

REVISION 89: 11/11/97

REVISION 90: 11/8/97

REVISION 91: 11/5/97

REVISION 92: 11/2/97

REVISION 93: 10/30/97

REVISION 94: 10/27/97

REVISION 95: 10/24/97

REVISION 96: 10/21/97

REVISION 97: 10/18/97

REVISION 98: 10/15/97

REVISION 99: 10/12/97

REVISION 100: 10/9/97

REVISION 101: 10/6/97

REVISION 102: 10/3/97

REVISION 103: 9/30/97

REVISION 104: 9/27/97

REVISION 105: 9/24/97

REVISION 106: 9/21/97

REVISION 107: 9/18/97

REVISION 108: 9/15/97

REVISION 109: 9/12/97

REVISION 110: 9/9/97

REVISION 111: 9/6/97

REVISION 112: 9/3/97

REVISION 113: 8/31/97

REVISION 114: 8/28/97

REVISION 115: 8/25/97

REVISION 116: 8/22/97

REVISION 117: 8/19/97

REVISION 118: 8/16/97

REVISION 119: 8/13/97

REVISION 120: 8/10/97

REVISION 121: 8/7/97

REVISION 122: 8/4/97

REVISION 123: 8/1/97

REVISION 124: 7/29/97

REVISION 125: 7/26/97

REVISION 126: 7/23/97

REVISION 127: 7/20/97

REVISION 128: 7/17/97

REVISION 129: 7/14/97

REVISION 130: 7/11/97

REVISION 131: 7/8/97

REVISION 132: 7/5/97

REVISION 133: 7/2/97

REVISION 134: 6/29/97

REVISION 135: 6/26/97

REVISION 136: 6/23/97

REVISION 137: 6/20/97

REVISION 138: 6/17/97

REVISION 139: 6/14/97

REVISION 140: 6/11/97

REVISION 141: 6/8/97

REVISION 142: 6/5/97

REVISION 143: 6/2/97

REVISION 144: 5/30/97

REVISION 145: 5/27/97

REVISION 146: 5/24/97

REVISION 147: 5/21/97

REVISION 148: 5/18/97

REVISION 149: 5/15/97

REVISION 150: 5/12/97

REVISION 151: 5/9/97

REVISION 152: 5/6/97

REVISION 153: 5/3/97

REVISION 154: 4/30/97

REVISION 155: 4/27/97

REVISION 156: 4/24/97

REVISION 157: 4/21/97

REVISION 158: 4/18/97

REVISION 159: 4/15/97

REVISION 160: 4/12/97

REVISION 161: 4/9/97

REVISION 162: 4/6/97

REVISION 163: 4/3/97

REVISION 164: 3/31/97

REVISION 165: 3/28/97

REVISION 166: 3/25/97

REVISION 167: 3/22/97

REVISION 168: 3/19/97

REVISION 169: 3/16/97

REVISION 170: 3/13/97

REVISION 171: 3/10/97

REVISION 172: 3/7/97

REVISION 173: 3/4/97

REVISION 174: 3/1/97

REVISION 175: 2/28/97

REVISION 176: 2/25/97

REVISION 177: 2/22/97

REVISION 178: 2/19/97

REVISION 179: 2/16/97

REVISION 180: 2/13/97

REVISION 181: 2/10/97

REVISION 182: 2/7/97

REVISION 183: 2/4/97

REVISION 184: 2/1/97

REVISION 185: 1/29/97

REVISION 186: 1/26/97

REVISION 187: 1/23/97

REVISION 188: 1/20/97

REVISION 189: 1/17/97

REVISION 190: 1/14/97

REVISION 191: 1/11/97

REVISION 192: 1/8/97

REVISION 193: 1/5/97

REVISION 194: 1/2/97

REVISION 195: 12/30/96

REVISION 196: 12/27/96

REVISION 197: 12/24/96

REVISION 198: 12/21/96

REVISION 199: 12/18/96

REVISION 200: 12/15/96

REVISION 201: 12/12/96

REVISION 202: 12/9/96

REVISION 203: 12/6/96

REVISION 204: 12/3/96

REVISION 205: 11/30/96

REVISION 206: 11/27/96

REVISION 207: 11/24/96

REVISION 208: 11/21/96

REVISION 209: 11/18/96

REVISION 210: 11/15/96

REVISION 211: 11/12/96

REVISION 212: 11/9/96

REVISION 213: 11/6/96

REVISION 214: 11/3/96

REVISION 215: 10/31/96

REVISION 216: 10/28/96

REVISION 217: 10/25/96

REVISION 218: 10/22/96

REVISION 219: 10/19/96

REVISION 220: 10/16/96

REVISION 221: 10/13/96

REVISION 222: 10/10/96

REVISION 223: 10/7/96

REVISION 224: 10/4/96

REVISION 225: 10/1/96

REVISION 226: 9/28/96

REVISION 227: 9/25/96

REVISION 228: 9/22/96

REVISION 229: 9/19/96

REVISION 230: 9/16/96

REVISION 231: 9/13/96

REVISION 232: 9/10/96

REVISION 233: 9/7/96

REVISION 234: 9/4/96

REVISION 235: 9/1/96

REVISION 236: 8/29/96

REVISION 237: 8/26/96

REVISION 238: 8/23/96

REVISION 239: 8/20/96

REVISION 240: 8/17/96

REVISION 241: 8/14/96

REVISION 242: 8/11/96

REVISION 243: 8/8/96

REVISION 244: 8/5/96

REVISION 245: 8/2/96

REVISION 246: 7/30/96

REVISION 247: 7/27/96

REVISION 248: 7/24/96

REVISION 249: 7/21/96

REVISION 250: 7/18/96

REVISION 251: 7/15/96

REVISION 252: 7/12/96

REVISION 253: 7/9/96

REVISION 254: 7/6/96

REVISION 255: 7/3/96

REVISION 256: 6/30/96

REVISION 257: 6/27/96

REVISION 258: 6/24/96

REVISION 259: 6/21/96

REVISION 260: 6/18/96

REVISION 261: 6/15/96

REVISION 262: 6/12/96

REVISION 263: 6/9/96

REVISION 264: 6/6/96

REVISION 265: 6/3/96

REVISION 266: 5/31/96

REVISION 267: 5/28/96

REVISION 268: 5/25/96

REVISION 269: 5/22/96

REVISION 270: 5/19/96

REVISION 271: 5/16/96

REVISION 272: 5/13/96

REVISION 273: 5/10/96

REVISION 274: 5/7/96

REVISION 275: 5/4/96

REVISION 276: 5/1/96

REVISION 277: 4/29/96

REVISION 278: 4/26/96

REVISION 279: 4/23/96

REVISION 280: 4/20/96

REVISION 281: 4/17/96

REVISION 282: 4/14/96

REVISION 283: 4/11/96

REVISION 284: 4/8/96

REVISION 285: 4/5/96

REVISION 286: 4/2/96

REVISION 287: 3/30/96

REVISION 288: 3/27/96

REVISION 289: 3/24/96

REVISION 290: 3/21/96

REVISION 291: 3/18/96

REVISION 292: 3/15/96

REVISION 293: 3/12/96

REVISION 294: 3/9/96

REVISION 295: 3/6/96

REVISION 296: 3/3/96

REVISION 297: 2/29/96

REVISION 298: 2/26/96

REVISION 299: 2/23/96

REVISION 300: 2/20/96

REVISION 301: 2/17/96

REVISION 302: 2/14/96

REVISION 303: 2/11/96

REVISION 304: 2/8/96

REVISION 305: 2/5/96

REVISION 306: 2/2/96

REVISION 307: 1/30/96

REVISION 308: 1/27/96

REVISION 309: 1/24/96

REVISION 310: 1/21/96

REVISION 311: 1/18/96

REVISION 312: 1/15/96

REVISION 313: 1/12/96

REVISION 314: 1/9/96

REVISION 315: 1/6/96

REVISION 316: 1/3/96

REVISION 317: 12/31/95

REVISION 318: 12/28/95

REVISION 319: 12/25/95

REVISION 320: 12/22/95

REVISION 321: 12/19/95

REVISION 322: 12/16/95

REVISION 323: 12/13/95

REVISION 324: 12/10/95

REVISION 325: 12/7/95

REVISION 326: 12/4/95

REVISION 327: 12/1/95

REVISION 328: 11/29/95

REVISION 329: 11/26/95

REVISION 330: 11/23/95

REVISION 331: 11/20/95

REVISION 332: 11/17/95

REVISION 333: 11/14/95

REVISION 334: 11/11/95

REVISION 335: 11/8/95

REVISION 336: 11/5/95

REVISION 337: 11/2/95

REVISION 338: 10/30/95

REVISION 339: 10/27/95

REVISION 340: 10/24/95

REVISION 341: 10/21/95

REVISION 342: 10/18/95

REVISION 343: 10/15/95

REVISION 344: 10/12/95

REVISION 345: 10/9/95

REVISION 346: 10/6/95

REVISION 347: 10/3/95

REVISION 348: 9/30/95

REVISION 349: 9/27/95

REVISION 350: 9/24/95

REVISION 351: 9/21/95

REVISION 352: 9/18/95

REVISION 353: 9/15/95

REVISION 354: 9/12/95

REVISION 355: 9/9/95

REVISION 356: 9/6/95

REVISION 357: 9/3/95

REVISION 358: 8/31/95

REVISION 359: 8/28/95

REVISION 360: 8/25/95

REVISION 361: 8/22/95

REVISION 362: 8/19/95

REVISION 363: 8/16/95

REVISION 364: 8/13/95

REVISION 365: 8/10/95

REVISION 366: 8/7/95

REVISION 367: 8/4/95

REVISION 368: 8/1/95

REVISION 369: 7/29/95

REVISION 370: 7/26/95

REVISION 371: 7/23/95

REVISION 372: 7/20/95

REVISION 373: 7/17/95

REVISION 374: 7/14/95

REVISION 375: 7/11/95

REVISION 376: 7/8/95

REVISION 377: 7/5/95

REVISION 378: 7/2/95

REVISION 379: 6/29/95

REVISION 3